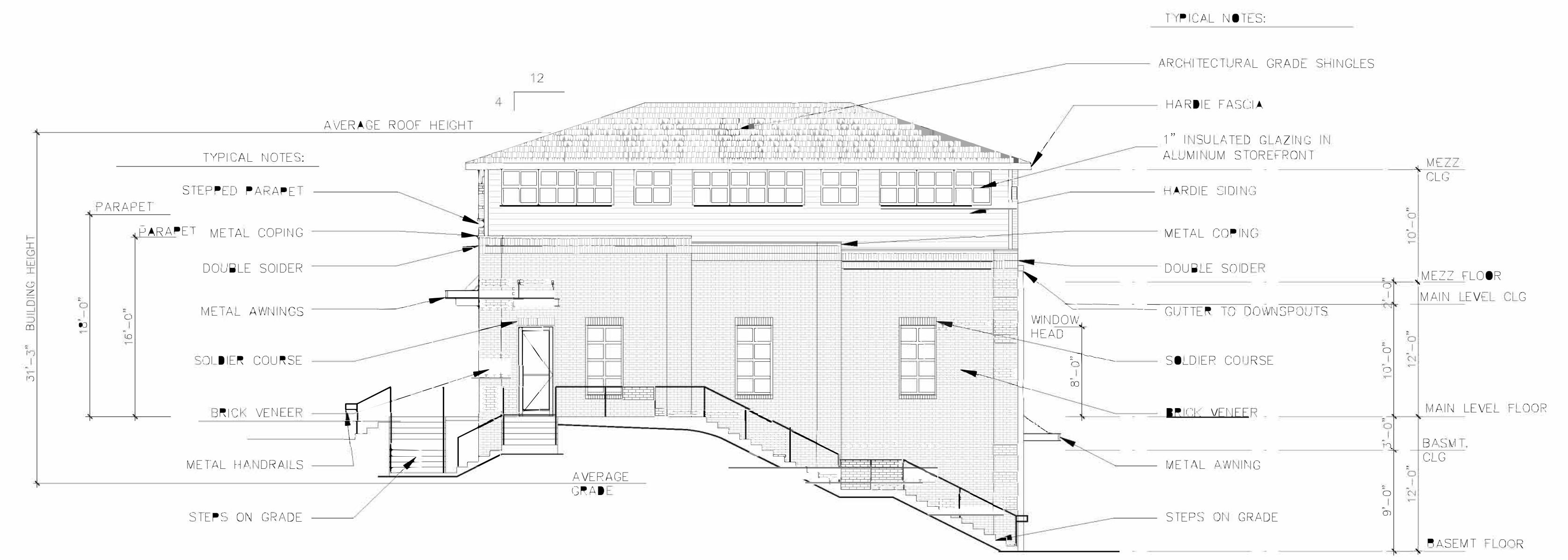


1 FRONT ELEVATION
 A1 SCALE: 1/8" = 1'-0"

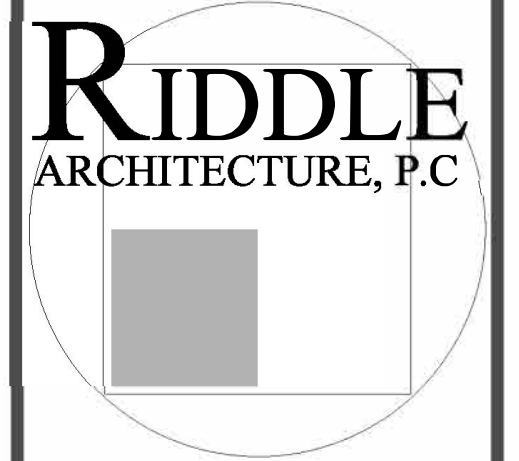


2 RIGHT SIDE ELEVATION
 A1 SCALE: 1/8" = 1'-0"

REVISIONS	
#	DATE

NEW CORPORATE HEADQUARTERS FOR:

4729 PEACHTREE INDUSTRIAL BLVD. BERKELEY LAKE, GEORGIA



AMERICAN INSTITUTE OF ARCHITECTS
 1481 HODGES MILL ROAD WATKINSVILLE, GA 30677
 (404) 285-8646

SHEET #
 A1