

FOR SALE / LEASE

925 N Michigan Ave, Saginaw, MI 48602



PREMIER OFFICE / MEDICAL SPACE AVAILABLE

SUMMARY

High profile office or medical building in Saginaw's relatively untapped market with 21,437 SF available. Space is easily divisible if a smaller space is needed. Perfect office space for attorneys, financial planners, administrative back office, coworking, or medical practice.

SPACE FEATURES

- 890 SF – 21,437 SF
- Easily Divisible Floorplans
- Several Spaces Have Private Restrooms
- Private Entrance For Some Spaces
- Several Rooftop Patios/Break Areas

BUILDING FEATURES

- 93 Parking Spots
- 5 Common Area Restrooms
- High Visibility Signage on Michigan Ave
- Original & Upscale Finishes Throughout
- Unique Experience For Clients and Staff

Virtual Tour Available at:

www.stokasbieri.com/properties

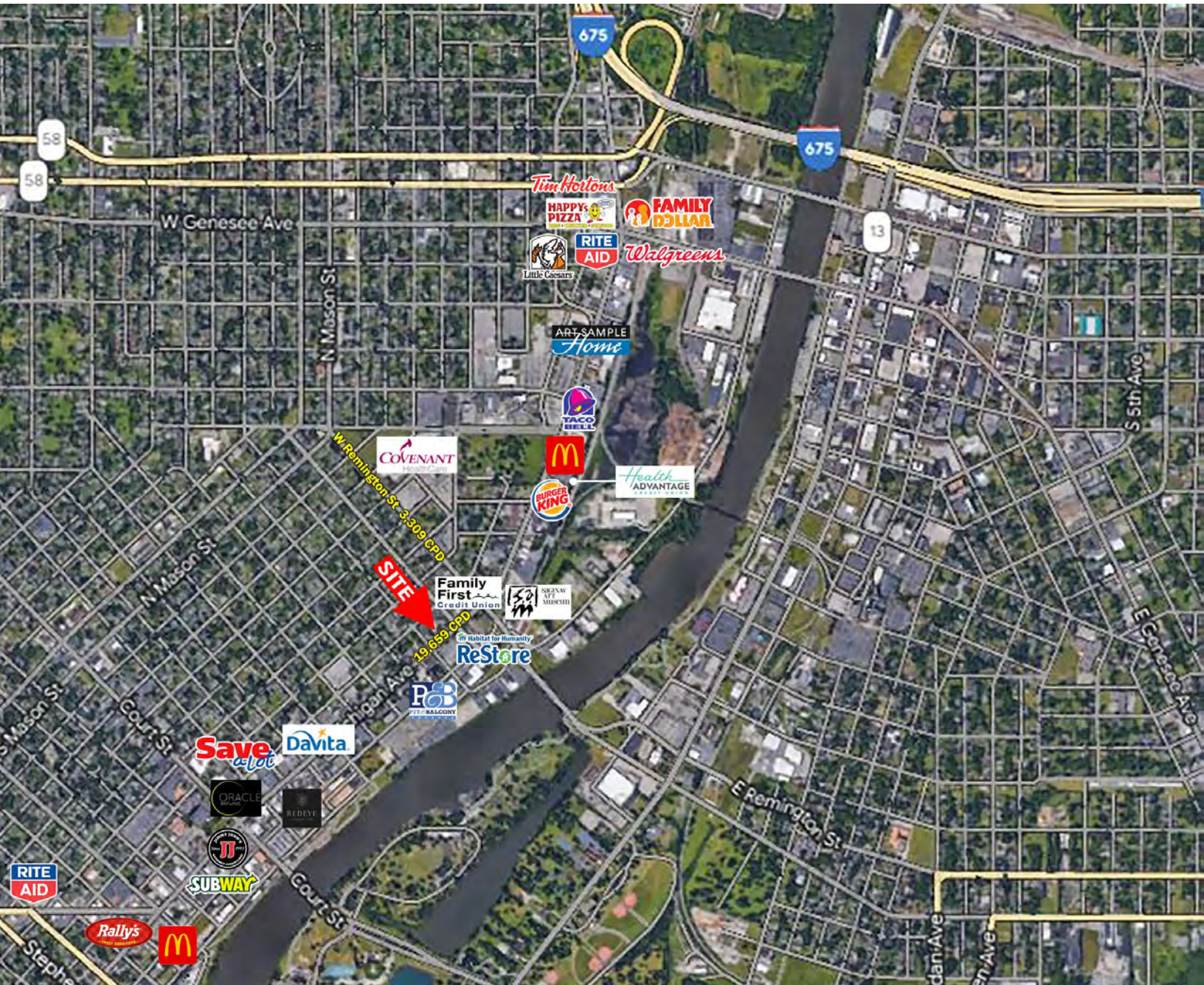
JOSH ZEID 248.496.0768 jzeid@sbre1.com



FOR SALE / LEASE

925 N Michigan Ave, Saginaw, MI 48602

AERIAL



FOR SALE / LEASE

925 N Michigan Ave, Saginaw, MI 48602

EXTERIOR BUILDING PHOTOS



JOSH ZEID 248.496.0768 jzeid@sbre1.com



FOR SALE / LEASE

925 N Michigan Ave, Saginaw, MI 48602

COMMON AREA PHOTOS



JOSH ZEID 248.496.0768 jzeid@sbre1.com



FOR SALE / LEASE

925 N Michigan Ave, Saginaw, MI 48602

COMMON AREA PHOTOS CONT.



FOR SALE / LEASE

925 N Michigan Ave, Saginaw, MI 48602

SPACE PHOTOS



JOSH ZEID 248.496.0768 jzeid@sbre1.com



FOR SALE / LEASE

925 N Michigan Ave, Saginaw, MI 48602

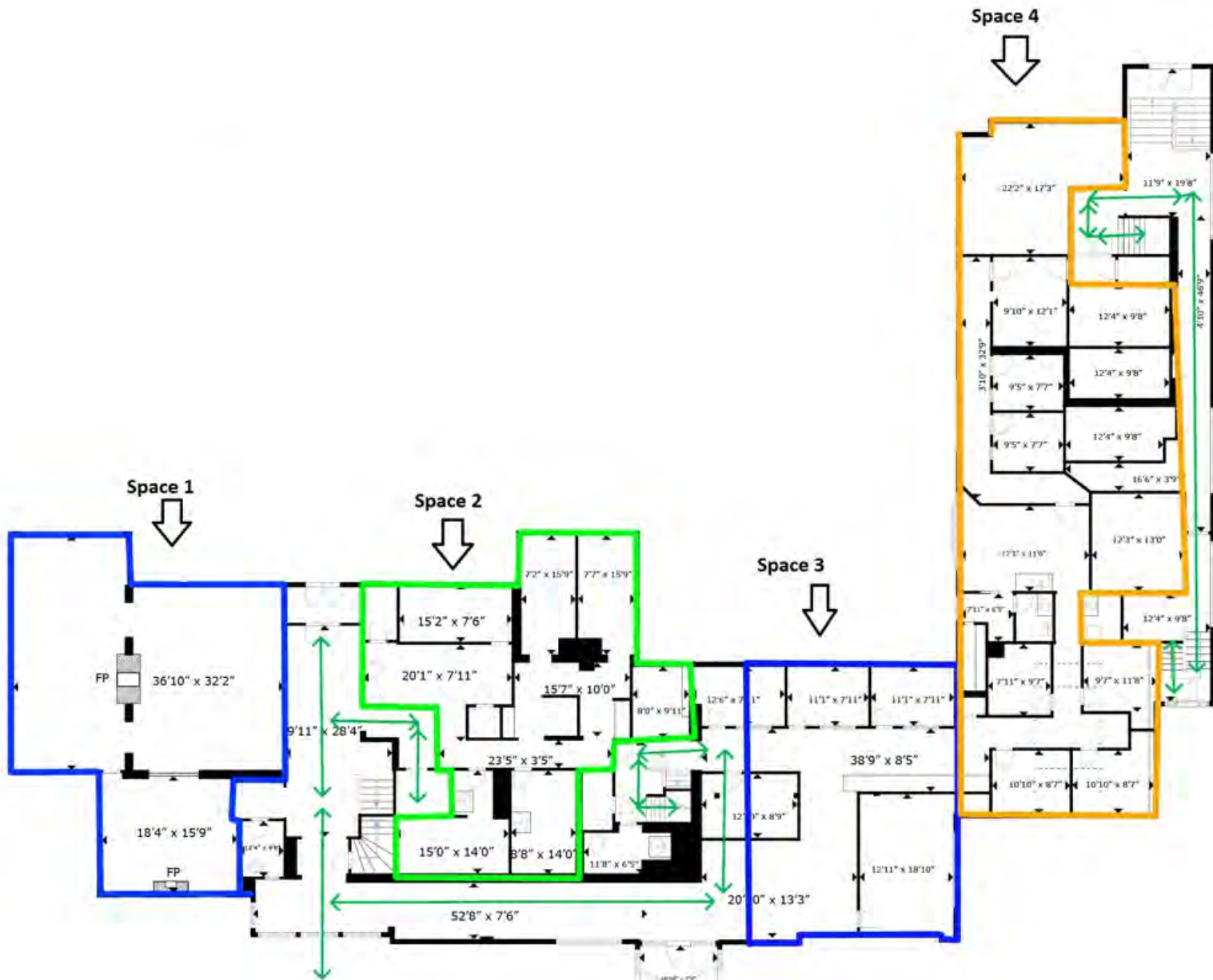
SPACE PHOTOS CONT.



FOR SALE / LEASE

925 N Michigan Ave, Saginaw, MI 48602

FLOOR PLAN – POTENTIAL SPLITS – MAIN FLOOR



Space 1:
2,555 SF

Space 2:
1,141 SF

Space 3:
1,027 SF

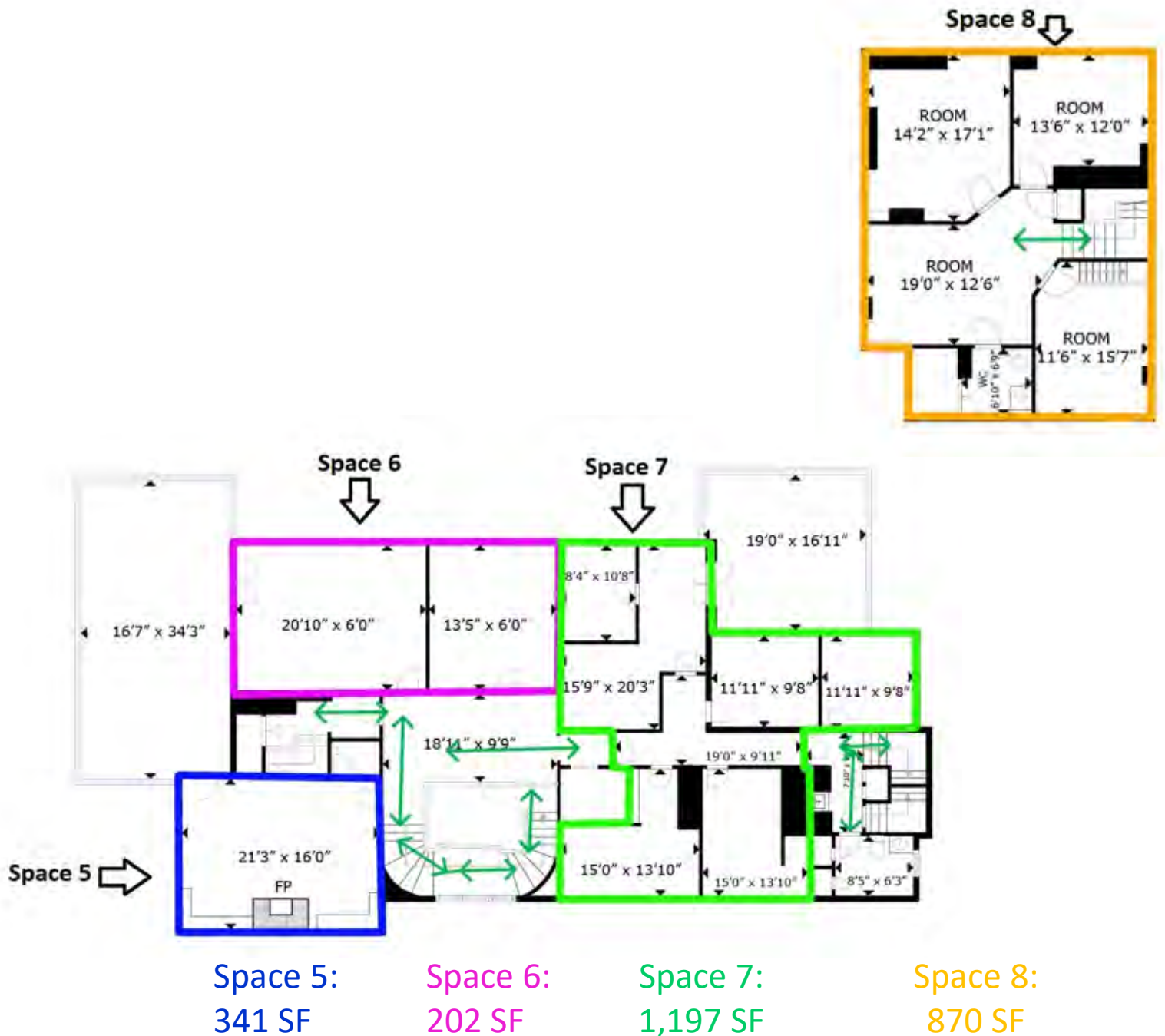
Space 4:
1,935 SF

Floor Total = 6,961 SF

FOR SALE / LEASE

925 N Michigan Ave, Saginaw, MI 48602

FLOOR PLAN – POTENTIAL SPLITS – 2nd FLOOR

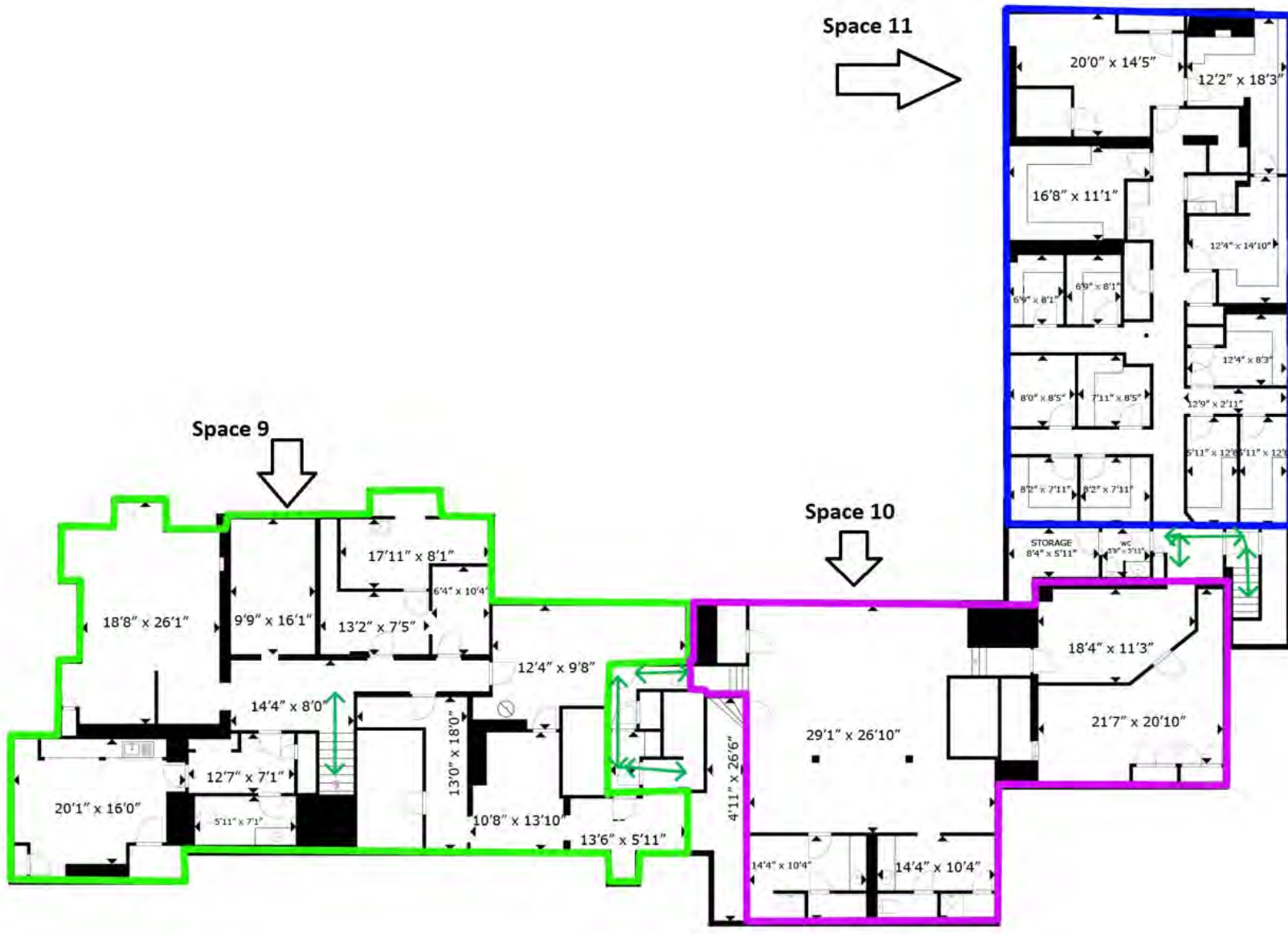


Floor Total = 3,781 SF

FOR SALE / LEASE

925 N Michigan Ave, Saginaw, MI 48602

FLOOR PLAN – POTENTIAL SPLITS – LOWER LEVEL



Space 9:
2,696 SF

Space 10:
1,703

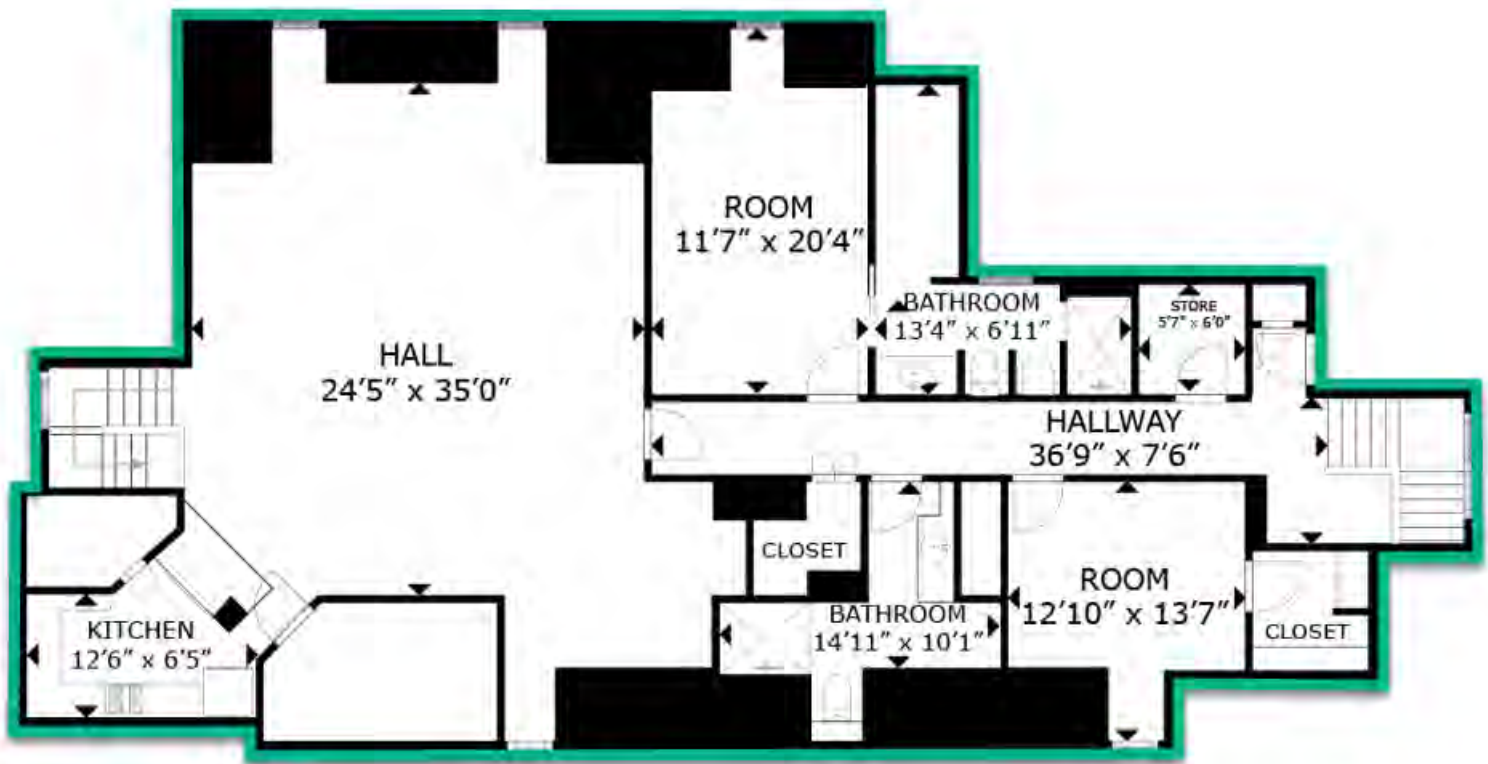
Space 11:
1,515

Floor Total = 6,961 SF

FOR SALE / LEASE

925 N Michigan Ave, Saginaw, MI 48602

FLOOR PLAN – POTENTIAL SPLITS – 3rd FLOOR



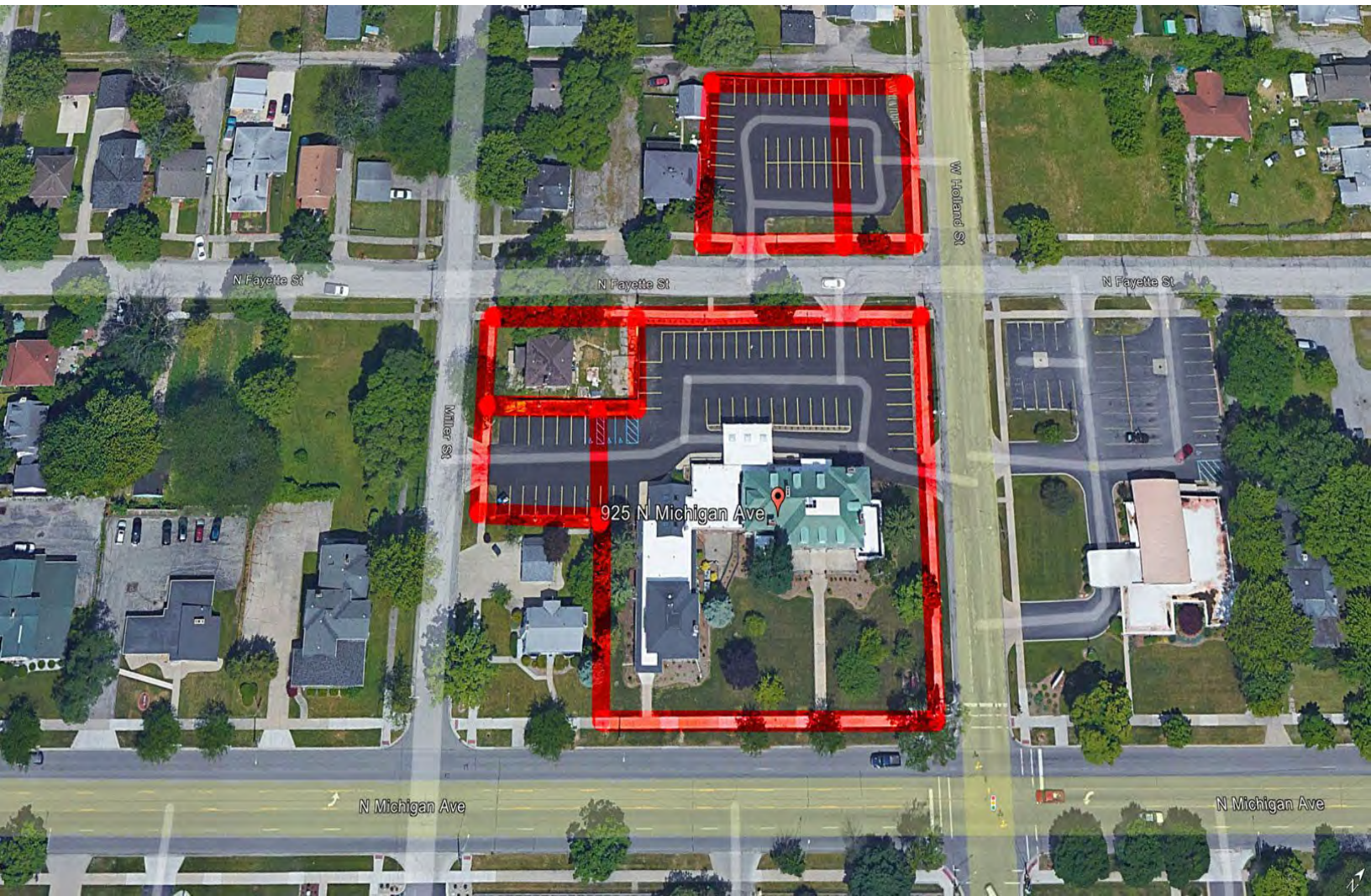
Space 12:
2,191 SF

Floor Total = 2,191 SF

FOR SALE / LEASE

925 N Michigan Ave, Saginaw, MI 48602

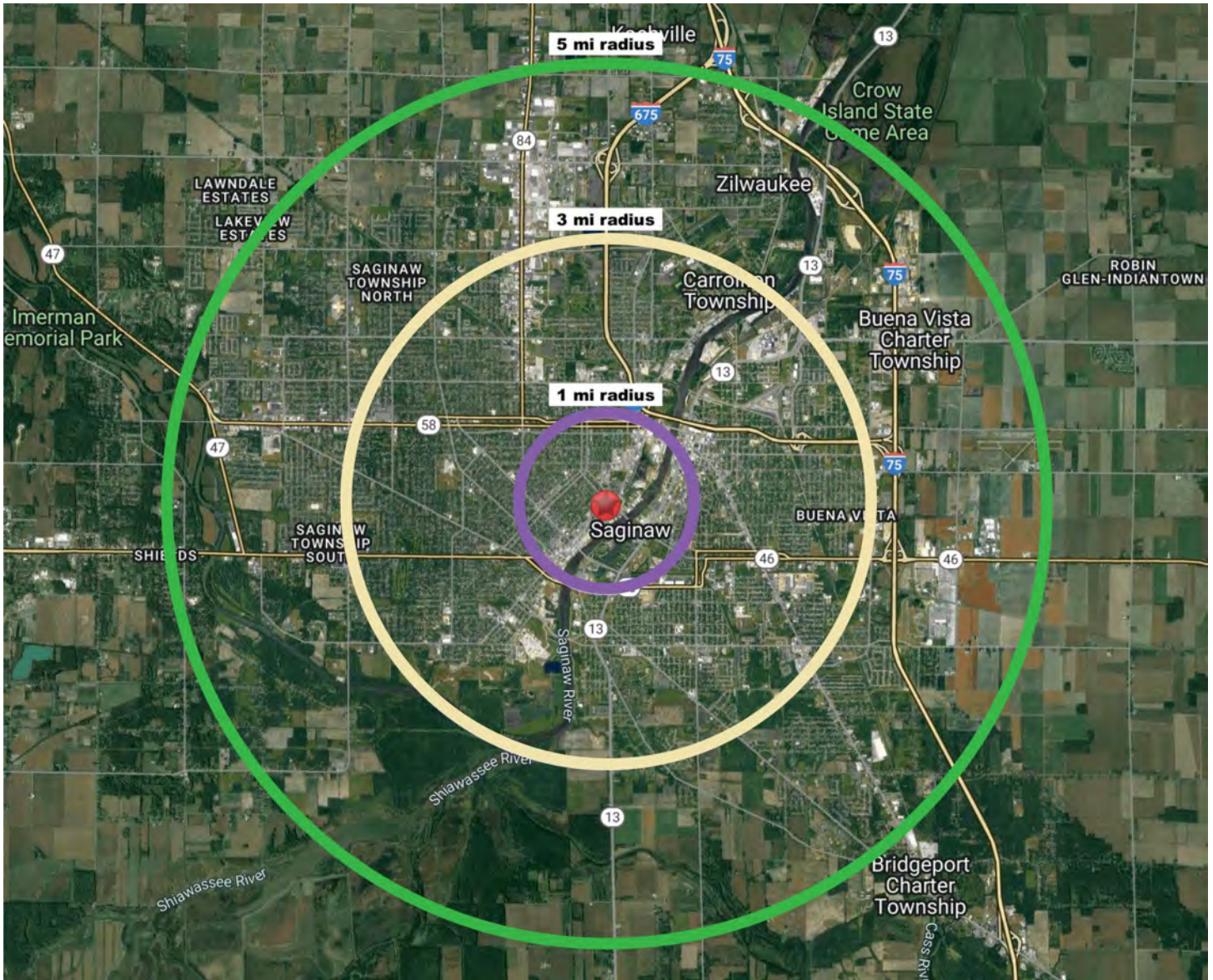
SITE PLAN



FOR SALE / LEASE

925 N Michigan Ave, Saginaw, MI 48602

DEMOGRAPHICS



Area Demographics	1Mile	3 Mile	5 Mile
Est Population (2022)	8,295	64,482	99,942
Average HH Income	\$48,499	\$56,072	\$63,699
Households	3,392	27,231	43,341
Median Age	33.7	36.7	38.2

Area Demographics	1Mile	3 Mile	5 Mile
Total Businesses	504	1,961	3,731
Daytime Population	9,550	26,936	52,243

JOSH ZEID 248.496.0768 jzeid@sbre1.com

