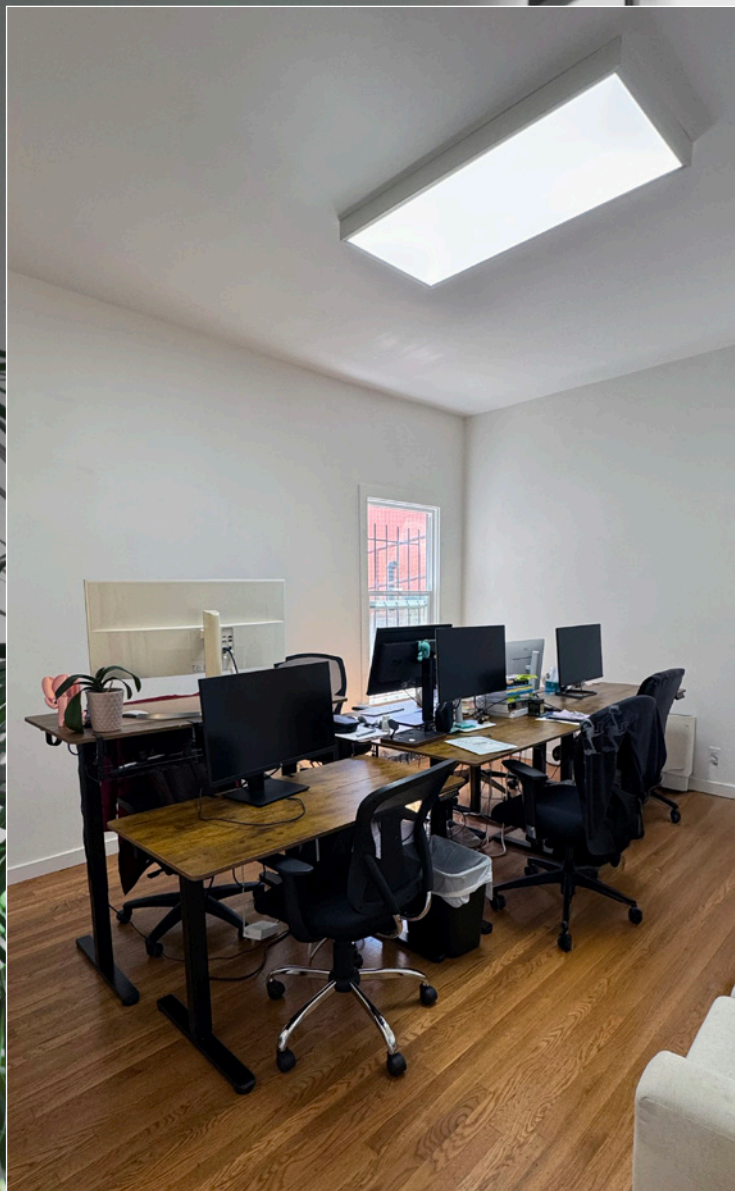




RENOVATED SECOND FLOOR OFFICE IN HEART OF MISSION

2447 MISSION STREET

maven
OFFICE



- **+ / - 940 - 2,243 SF**
- **Can be leased together or separate**
- **Fully renovated and move-in ready**
- **Bright interiors with abundant natural light**
- **Flexible floor plan with private offices, open work areas, and conference rooms**
- **Exclusive outdoor patio**
- **Excellent visibility in the heart of the Mission**
- **Steps from 24th Street BART and major bus lines**
- **Surrounded by top restaurants, cafés, and local amenities**
- **Exceptional 99 Walk Score**

FEATURES

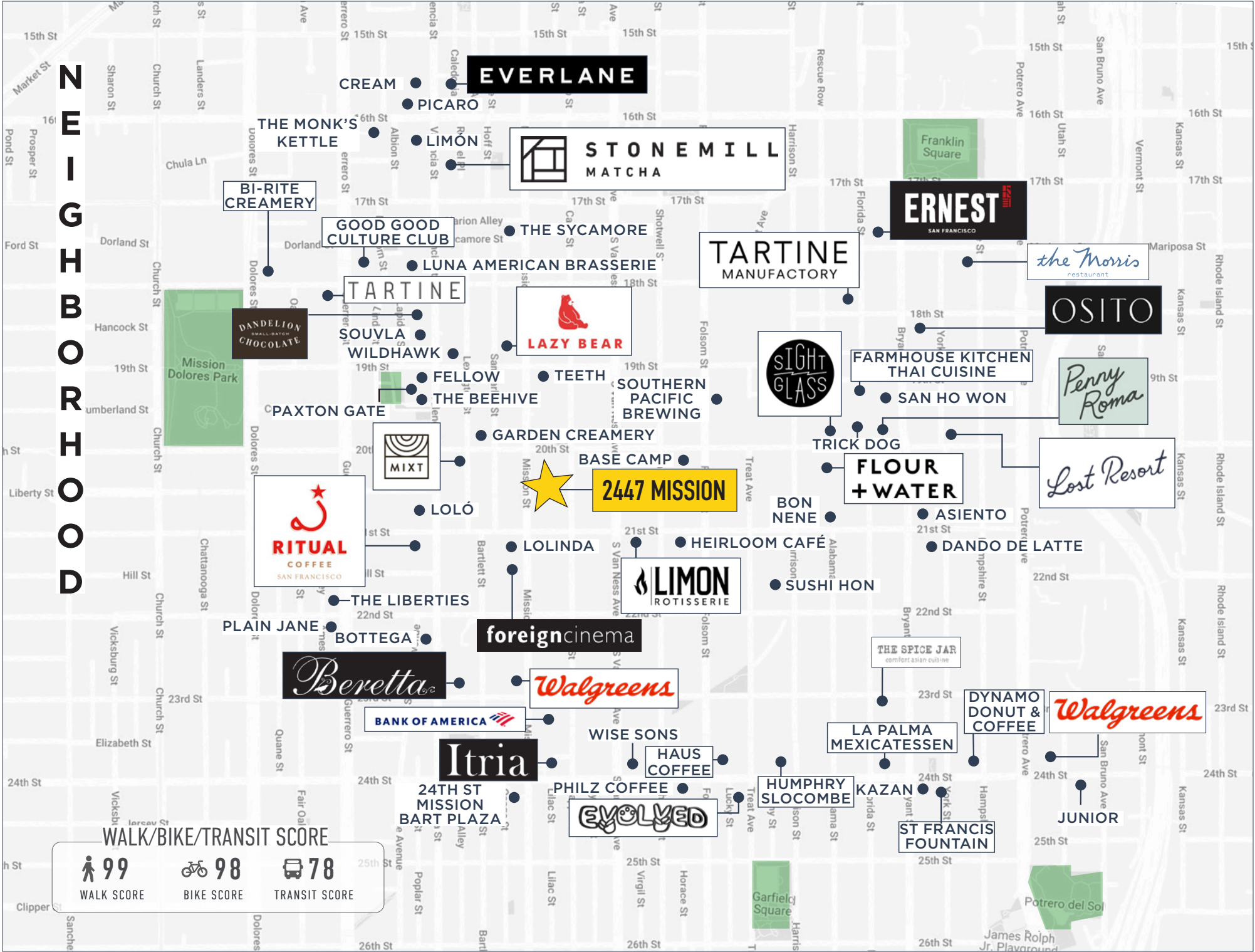
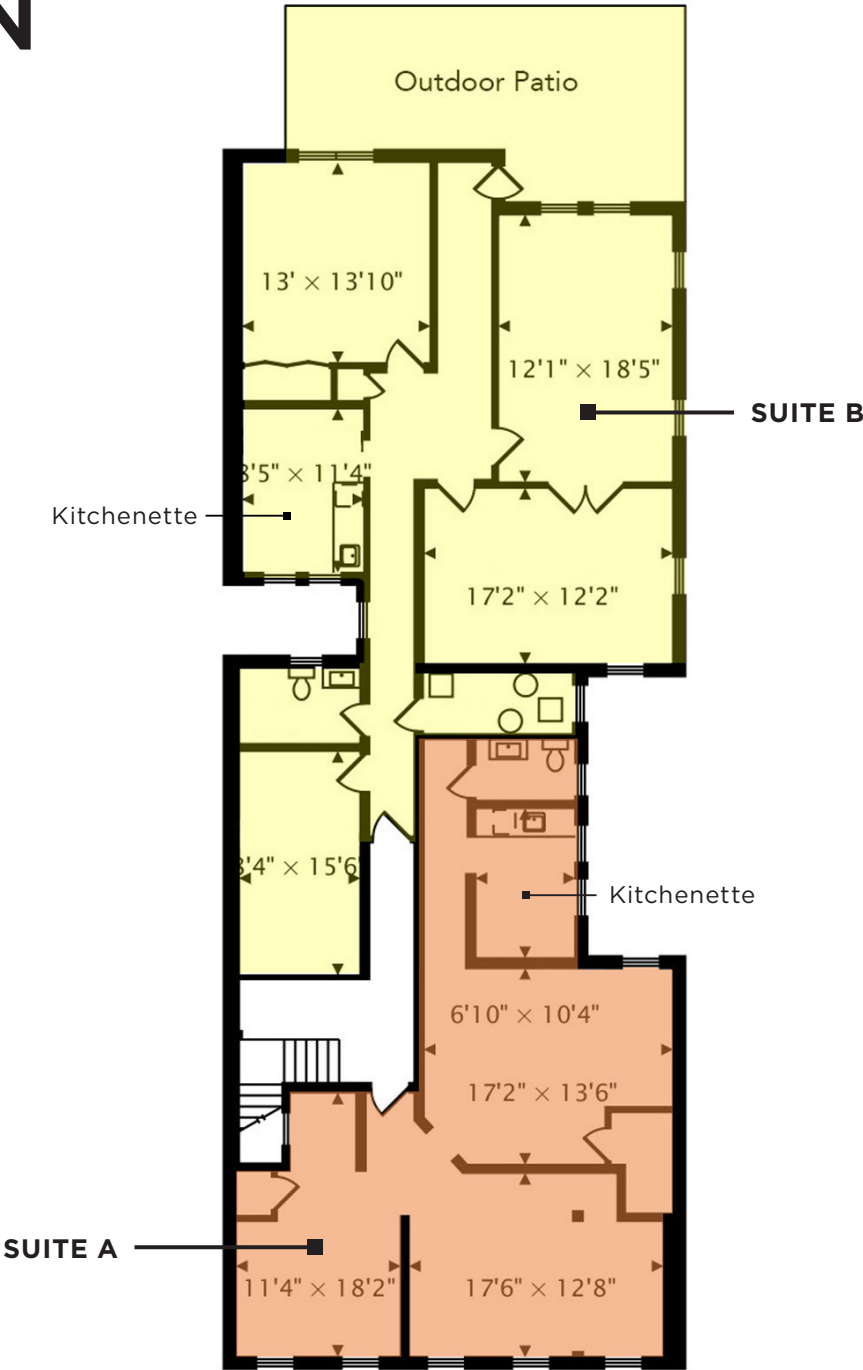
Located in one of San Francisco's most energetic and culturally rich neighborhoods, 2447 Mission Street offers a rare opportunity to secure modern office space with unbeatable access and amenities. The property's second-floor layout is designed to suit creative, professional, or tech tenants looking for both functionality and character in the heart of the Mission District.



2447 MISSION

FLOOR PLAN

- SUITE A: ±940 SF
- SUITE B: ±1,303 SF
- COMBINED: ±2,243 SF





DOLORES PARK



EL TECHO



ARIZMENDI BAKERY



FOREIGN CINEMA



LA TAQUERIA



RITUAL COFFEE



LA COPA LOCA GELATO



LIMÓN



BOTTEGA

MISSION DISTRICT

2447 Mission conveniently located in the heart of the Mission District in San Francisco.

The Mission is an eclectic blend of tech, art, and culture, a ground zero for new restaurants and pop-ups. It is incredibly walkable and bike-friendly with numerous lounges, clubs & entertainment venues. Colorful hispanic heritage with all around food, parades, and more. The sunniest microclimate in San Francisco.

Nearby neighbors include Foreign Cinema, Alamo Draft House, Urban Putt, along with the many local shops and markets that make this neighborhood unique and rich in culture.



NOTICE: This information has been secured from sources we believe to be reliable but we make no representations, warranties, express or implied, as to the accuracy of the information. Listing broker has been given enough information to provide only a preliminary interest in the property. The materials are not to be considered fact. The information contained herein is not a substitute for thorough due diligence investigation. References to square footage, zoning, use, or age are approximate. Please contact the San Francisco Planning Department to verify zoning at (415) 558-6378, as neither broker or landlord represent that this space is suitable for your use. Tenant or Buyer must verify the information at their own expense and bears all the risk for any inaccuracies. By receiving these materials you are agreeing to the disclaimers set forth herein. DRE#01878802

