

BEATRICE COVE | BUILDING 16

2400 W BRAKER LANE, AUSTIN, TX 78758

±16,200 SF AVAILABLE FOR SUBLEASE

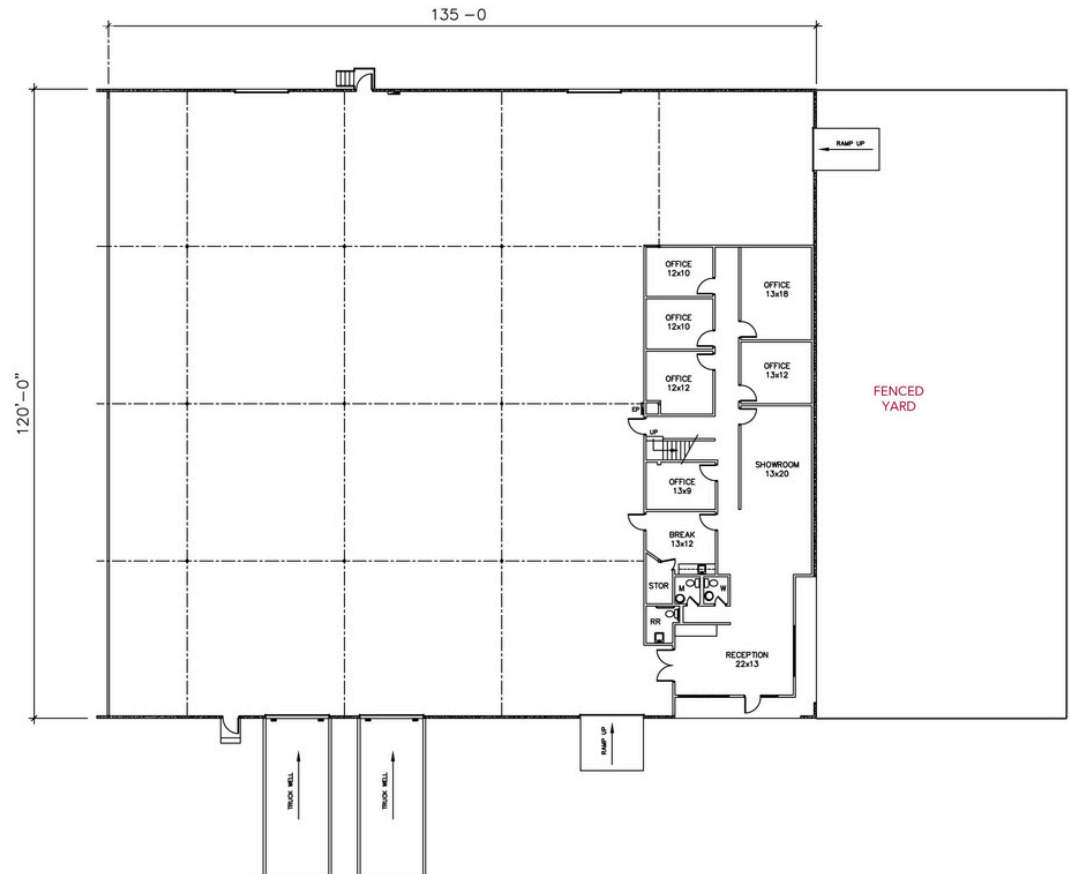
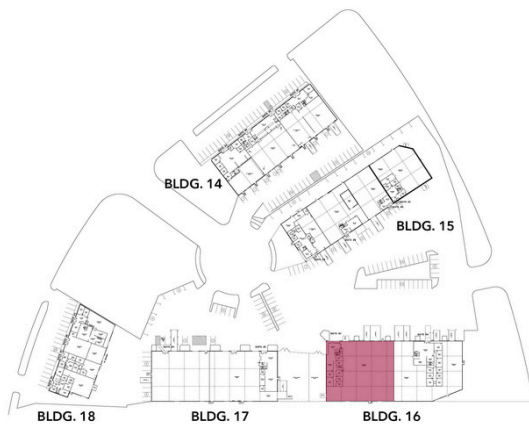


BUILDING 16 | SUITE D

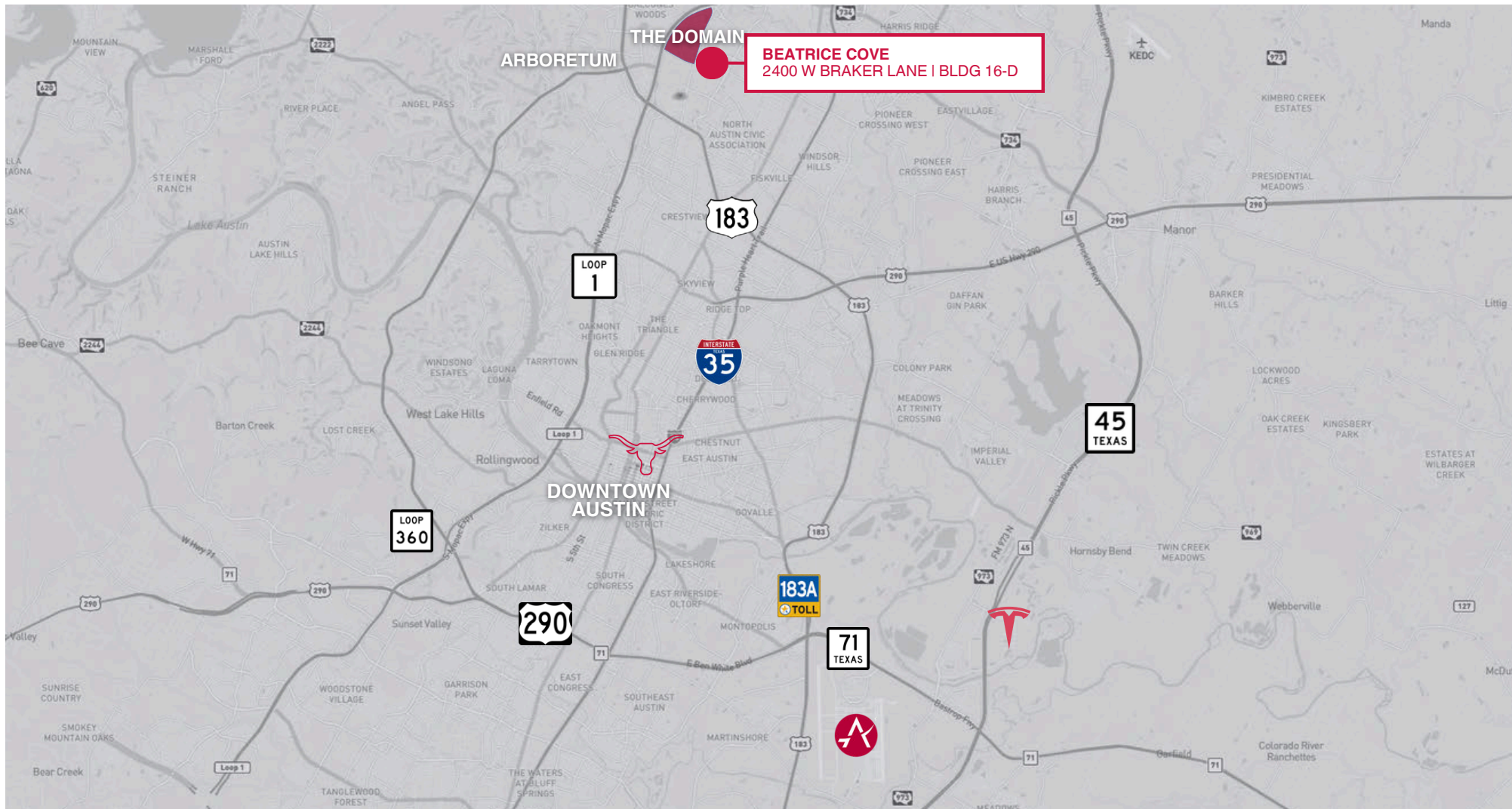
Available in 30 days | *Sublease through July 31, 2027*

SUITE HIGHLIGHTS

TOTAL SIZE	16,200 SF
OFFICE	±2,430 SF (15%)
WAREHOUSE	±13,770 SF (85%)
CLEAR HEIGHT	±18'
LOADING	DOCK HIGH & GRADE LEVEL
YARD SPACE	±4,000 SF




BEATRICE COVE | BUILDING 16



 **3 Minutes**
to The Domain

 **15 Minutes**
to Downtown Austin

 **20 Minutes**
to Austin-Bergstrom
Int'l Airport

 **1.5 Hours**
to San Antonio

 **3 Hours**
to Houston

 **3 Hours**
to Dallas

BEATRICE COVE | BUILDING 16

2400 W BRAKER LANE, AUSTIN, TX 78758

