

HUNTWOOD BUSINESS CENTER

30964-30998 HUNTWOOD AVENUE | HAYWARD, CA



EXCLUSIVE AGENTS:

Wesley Dolan, Associate

E \ wdolan@lee-associates.com

P \ 510.903.7609 | LIC# 02129144

Nathan Vance, Principal

E \ nvance@lee-associates.com

P \ 510.907.3021 | LIC# 02039163

Lee & Associates Oakland Commercial Real Estate \ 520 3rd Street, Suite 105, Oakland, CA 94607 \ www.lee-associates.com

All information furnished regarding property for sale, rental or financing is from sources deemed reliable, but no warranty or representation is made to the accuracy thereof and same is submitted to errors, omissions, change of price, rental or other conditions prior to sale, lease or financing or withdrawal without notice. No liability of any kind is to be imposed on the broker herein.


HUNTWOOD BUSINESS CENTER


30964-30998 HUNTWOOD AVENUE | HAYWARD, CA

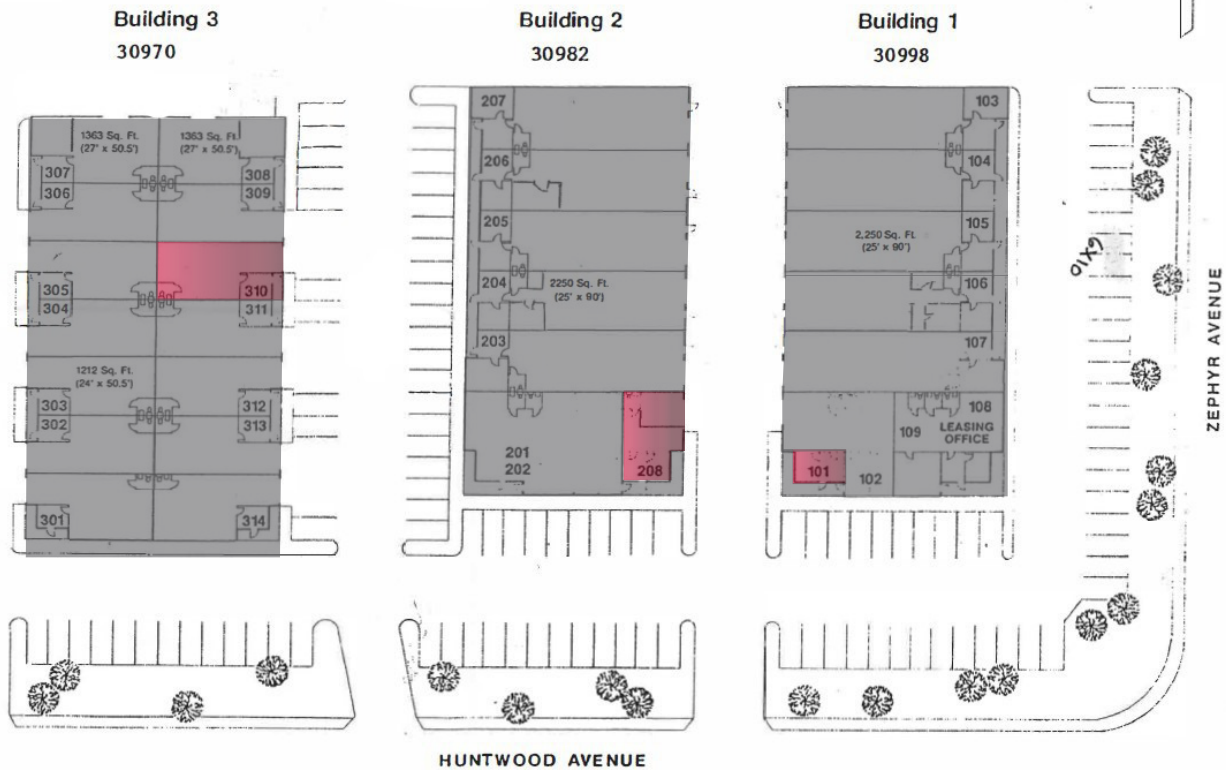


<i>BUILDING</i>	<i>UNIT</i>	<i>SF</i>	<i>OFFICE</i>	<i>LEASE RATE</i>	<i>OPEX</i>
BLDG 1-30998	#101	860±	100%	\$1.70/SF, NNN	\$0.41/SF
BLDG 2-30982	#208	924±	10%	\$1.50/SF, NNN	\$0.41/SF
BLDG 3-30970	#310	1,364±	10%	\$1.50/SF, NNN	\$0.41/SF

CURRENT AVAILABILITIES:
860± SF - 1,364± SF

 AVAILABLE

 OCCUPIED



Lee & Associates Oakland Commercial Real Estate \ 520 3rd Street, Suite 105, Oakland, CA 94607 \ www.lee-associates.com

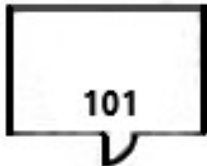
All information furnished regarding property for sale, rental or financing is from sources deemed reliable, but no warranty or representation is made to the accuracy thereof and same is submitted to errors, omissions, change of price, rental or other conditions prior to sale, lease or financing or withdrawal without notice. No liability of any kind is to be imposed on the broker herein.

HUNTWOOD BUSINESS CENTER

30964-30998 HUNTWOOD AVENUE | HAYWARD, CA

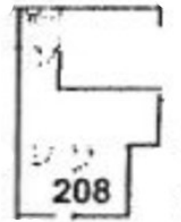
30998 #101 - 860± SF

- 860± SF of 100% Office Space
- Reception Area
- 1 Private Office
- 1 Restroom
- Lease Rate: \$1.70/SF, NNN
- Operating Expenses: \$0.41/SF
- Available Immediately



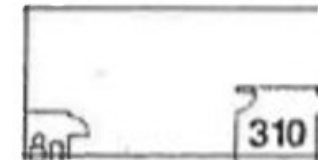
30982 #208 - 923± SF

- 923± SF Warehouse Space
- 10% Office
- 1 Private Office
- 1 Restroom
- Reception Area
- Lease Rate: \$1.50/SF, NNN
- Operating Expenses: \$0.41/SF
- Available Immediately



30970 #310 - 1,363± SF

- 1,363± SF Warehouse Space
- 10% Office
- 2 Private Offices
- 1 Restroom
- Reception Area
- Lease Rate: \$1.50/SF, NNN
- Operating Expenses: \$0.41/SF
- Available Immediately



EXCLUSIVE AGENTS:

Wesley Dolan, Associate

E \\ wdolan@lee-associates.com

P \\ 510.903.7609 | LIC# 02129144

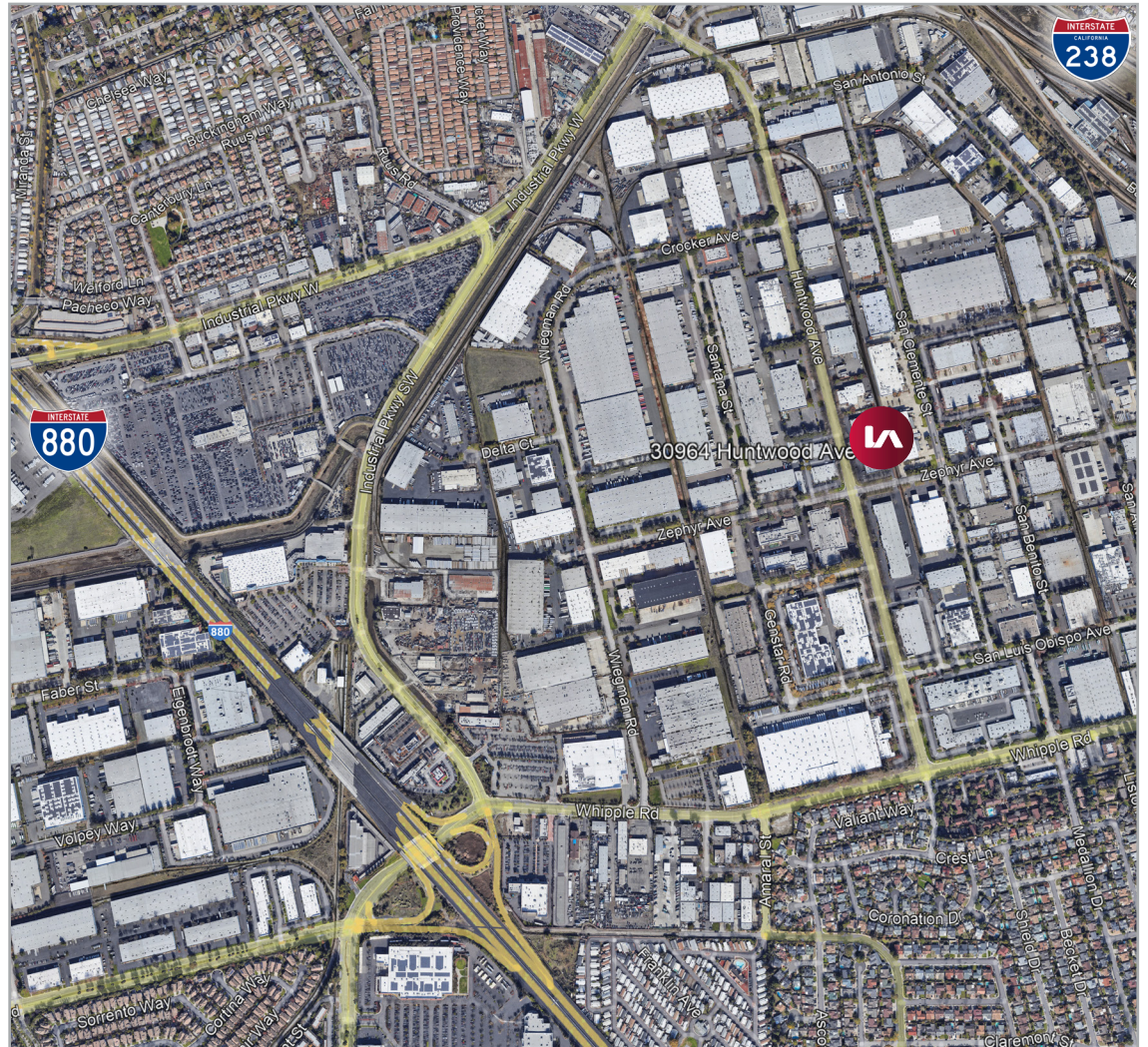
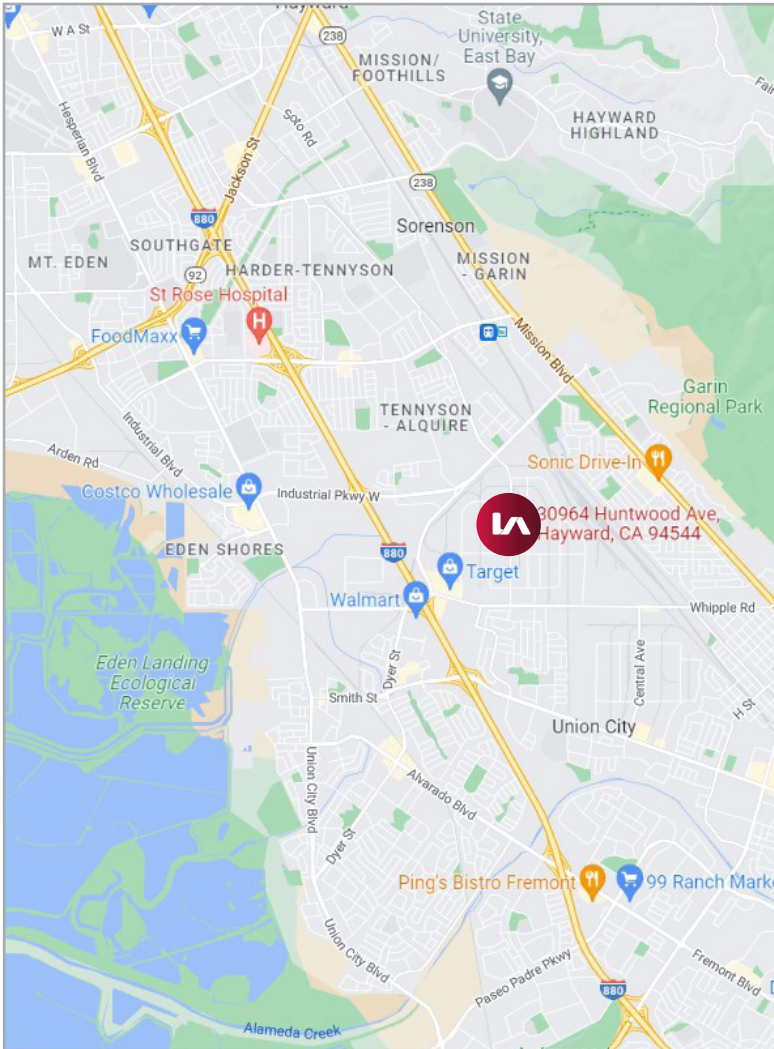
Nathan Vance, Principal

E \\ nvance@lee-associates.com

P \\ 510.907.3021 | LIC# 02039163

HUNTWOOD BUSINESS CENTER

30964-30998 HUNTWOOD AVENUE | HAYWARD, CA



EXCLUSIVE AGENTS:

Wesley Dolan, Associate

E \ wdolan@lee-associates.com

P \ 510.903.7609 | LIC# 02129144

Nathan Vance, Principal

E \ nvance@lee-associates.com

P \ 510.907.3021 | LIC# 02039163