

For lease

Tarrytown Corporate Center

520 White Plains Road,
Tarrytown, NY

Availabilities:

Partial 1st floor: 2,376 RSF

Partial 1st floor: 6,048 RSF

Partial 4th floor: 1,700 RSF

Partial 4th floor: 3,510 RSF

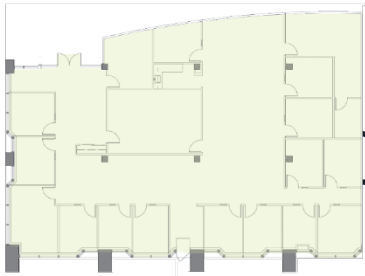
Partial 6th floor: 15,769 RSF

**Landlord could provide up to 30,000 SF
to meet your growing needs!*

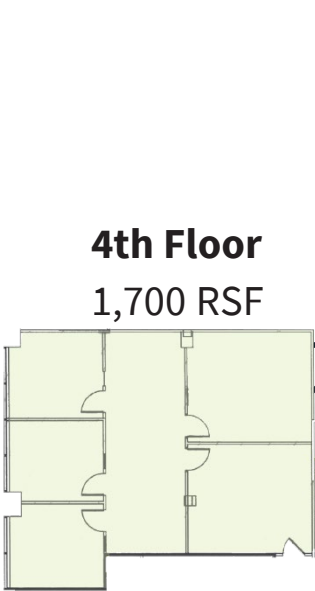
Ian Ceppos
Executive Vice President
914 806 7672
ian.ceppos@jll.com



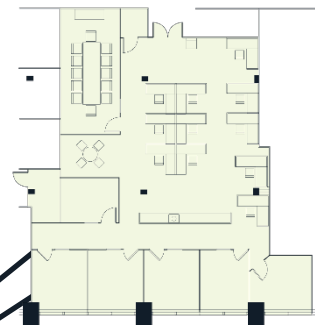
1st Floor
2,376 RSF



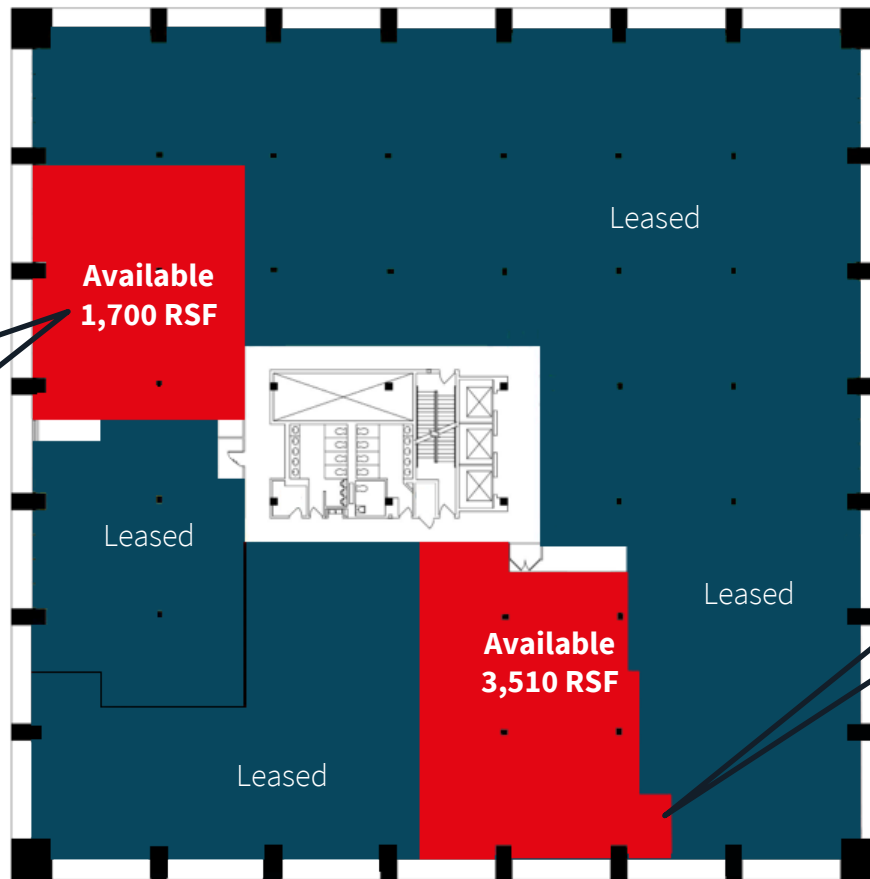
1st Floor
6,048 RSF

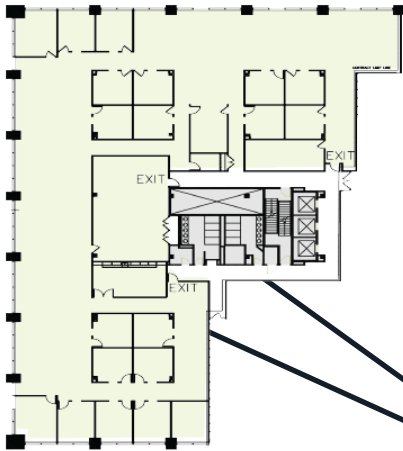


4th Floor
1,700 RSF



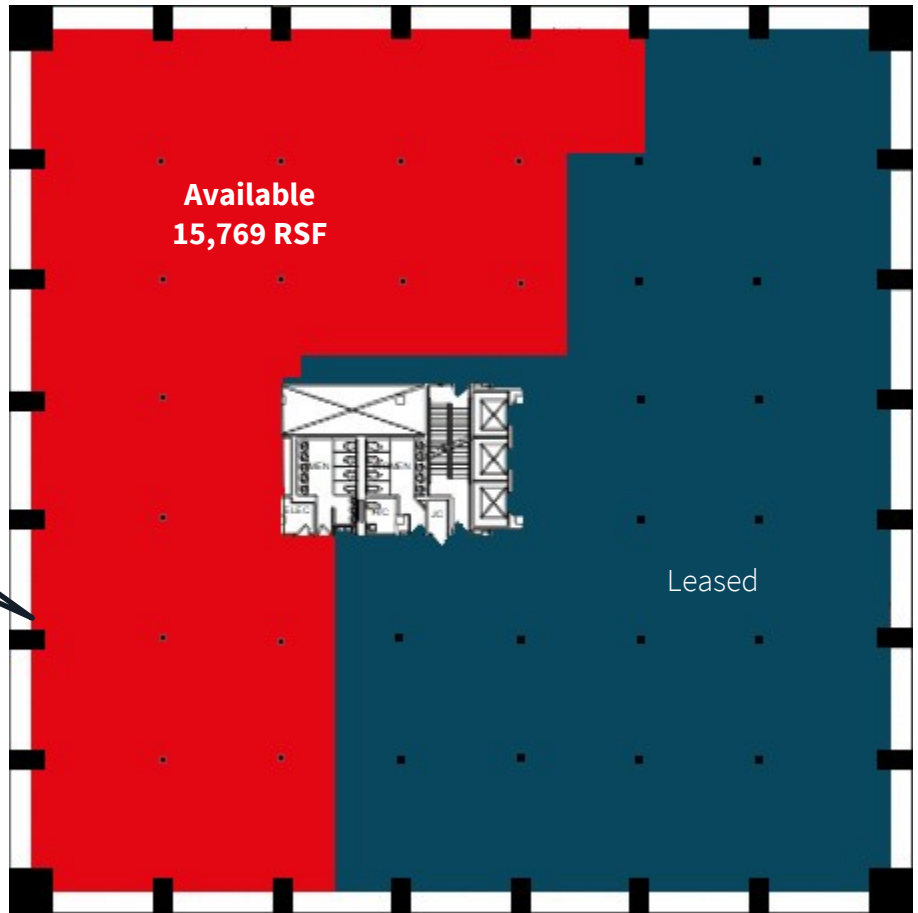
4th Floor
3,510 RSF





6th Floor
15,769 RSF

**Landlord could provide up to 30,000 SF to meet your growing needs!*



When it comes to commercial real estate, Signature Acquisitions stands out as your ideal partner, with a Strong Financial Position, a commitment to tenant satisfaction, and a proven track record with over 7 million SF of suburban office space in the NY Tri-State market.



Our State-of-the-Art Conference Facility is equipped with the latest AV and Technology: Built for comfort and productivity



Full-Service Cafeteria with a Health and Wellness Focus - Elevate Your Workplace Dining Experience: Renovations coming in 2024



Proximate to local amenities including the Sheraton and Marriot hotels, numerous restaurants, and the Tarrytown train station.



The newly constructed Mario M. Cuomo (Tappan Zee) Bridge offers ease of access from Rockland, Bergen, Fairfield, and Putnam counties.

For lease

Tarrytown Corporate Center

520 White Plains Road,
Tarrytown, NY



Mario Cuomo Bridge
Tappan Zee Bridge
Drive Time: 5 mins
From the location



Tarrytown
Drive Time: 6 mins
From NYC: 53 mins

**520 White Plains Road,
Tarrytown, NY**

Ian Ceppos
Executive Vice President
914 806 7672
ian.ceppos@jll.com