

246,500 SF

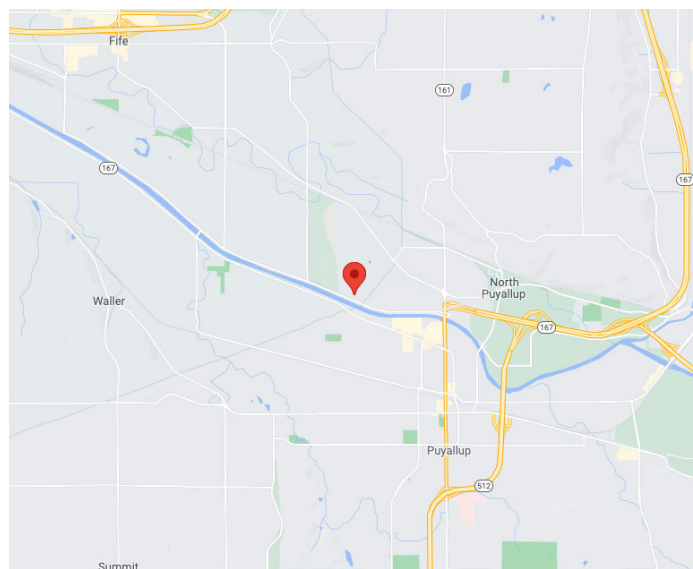
Industrial Space For Lease



Prologis Park Puyallup 1



1601 Industrial Park Way
Puyallup, WA 98371



LOCATION

- Excellent access to Port of Tacoma, I-5 and Hwy-167
- In-park truck flow is excellent

SUITE 100

- ±246,500 SF (Divisible to 114,000 SF)
- ±14,780 SF Office
- 59 DH doors; 2 GL doors
- Concrete truck apron
- 30' clear height
- 50' x 50' column spacing
- ESFR sprinkler system
- Ample employee car parks
- LED lighting
- Trailer Parking (36)
- 5,000 amps of 277/480
- Comcast fiber optic network
- Call for lease rate
- Available immediately

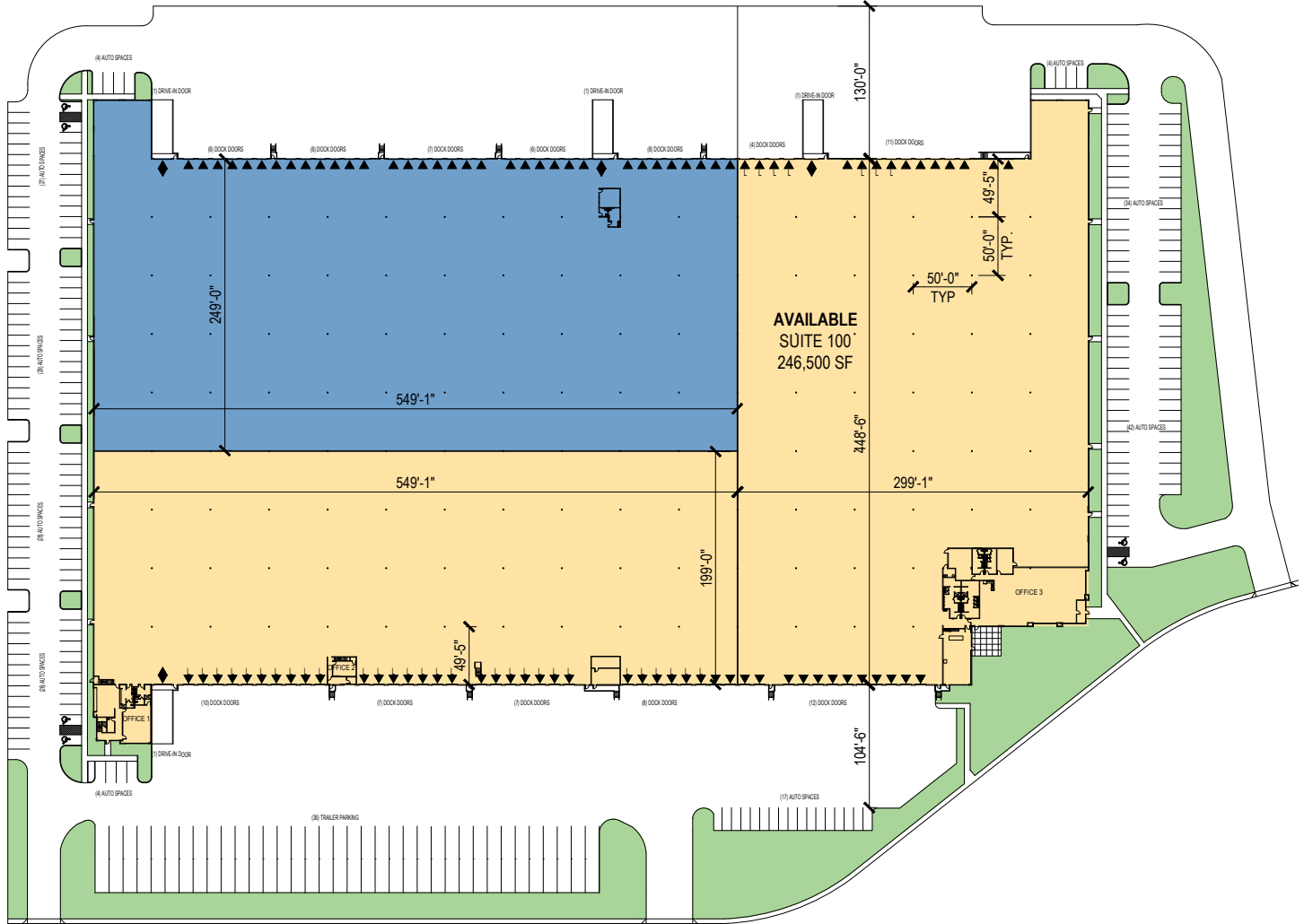
Prologis Essentials: your single-source service for efficient move-in and operations at [prologisessentials.com](https://www.prologisessentials.com)

246,500 SF

Industrial Space For Lease



Prologis Park Puyallup 1



Neil Walter Company

Scott Price
sprice@neilwalter.com
253 779 2419
1940 East D St, Suite 100
Tacoma, WA 98421

Neil Walter Company

Bruce Valentine
bvalentine@neilwalter.com
253 779 2400
1940 East D St, Suite 100
Tacoma, WA 98421

KBC Advisors

Michael Roy
michael.roy@kbcadvisors.com
206 940 7199
5628 Airport Way S #238
Seattle, WA 98108

Prologis

Mark Roddy
mroddy@prologis.com
206 414-7617
33930 Weyerhaeuser Way South, Suite 100
Federal Way, WA 98001

Prologis Essentials: your single-source service for efficient move-in and operations at [prologisessentials.com](https://www.prologisessentials.com)

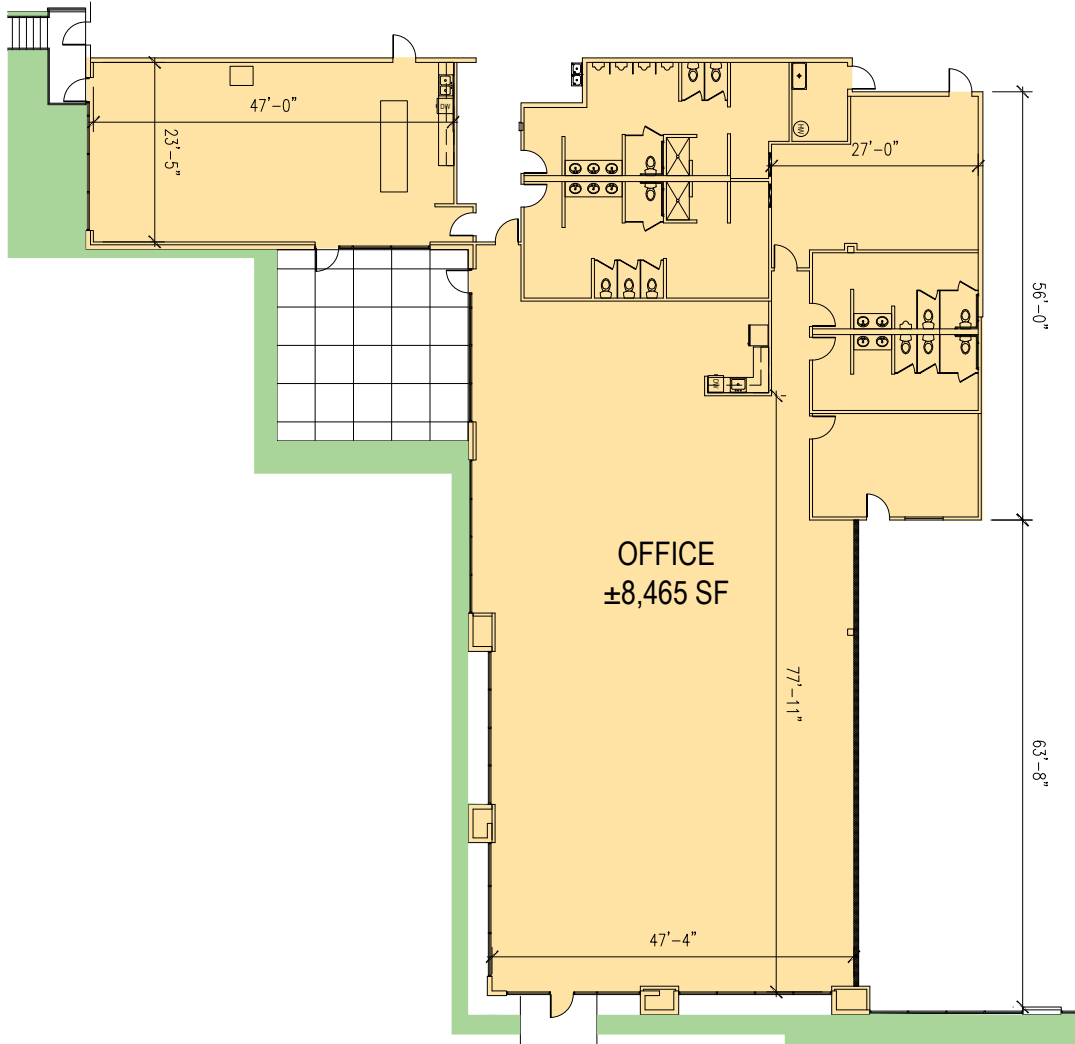
No warranty or representation, expressed or implied, is made as to the accuracy of the information contained herein, and same is submitted subject to error and omissions.

246,500 SF

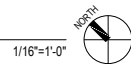
Industrial Space For Lease



Prologis Park Puyallup 1



SUITE 100 OFFICE PLAN



Neil Walter Company

Scott Price
sprice@neilwalter.com
253 779 2419
1940 East D St, Suite 100
Tacoma, WA 98421

Neil Walter Company

Bruce Valentine
bvalentine@neilwalter.com
253 779 2400
1940 East D St, Suite 100
Tacoma, WA 98421

KBC Advisors

Michael Roy
michael.roy@kbcadvisors.com
206 940 7199
5628 Airport Way S #238
Seattle, WA 98108

Prologis

Mark Roddy
mroddy@prologis.com
206 414-7617
33930 Weyerhaeuser Way South, Suite 100
Federal Way, WA 98001