



Orangeburg County Zoning Map



Map Tools

[Zoom All](#)
[Zoom Atlas](#)
[Zoom Index](#)

[Zoom In](#)
[Zoom Out](#)
[Pan Map](#)
[Select](#)
[Get Coordinates](#)
[Buffer](#)

Search on

[Owner](#)
[Address](#)
[Map Number](#)
[Intersection](#)
[Road Name](#)
[Common Name](#)
[Council District](#)

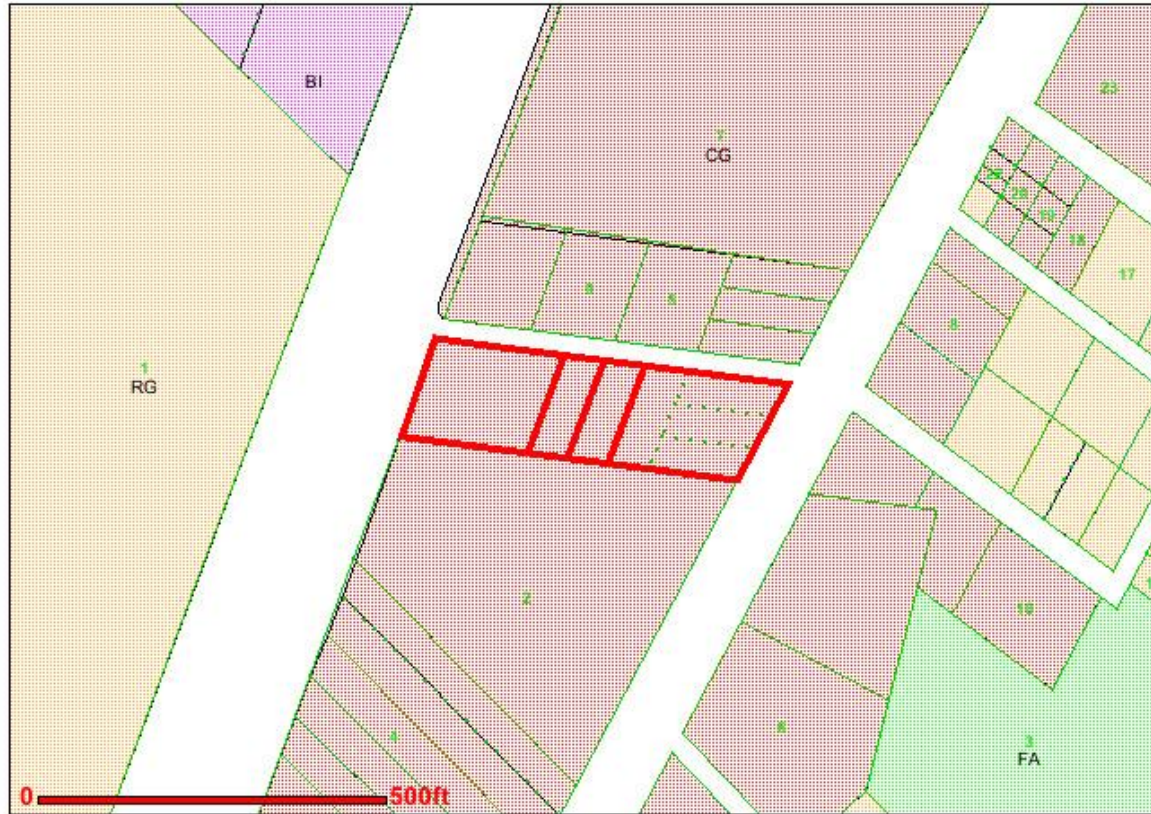
Utilities

[Map Layers](#)
[Print](#)
[Zoning Definitions](#)

Zoning

Ordinance

[Click here to request a zoning re-classification](#)



- BI - Business Industrial
- CG - Commercial, General
- CN - Commercial Neighborhood
- FA - Forest and Agriculture
- NA- Area inside City Limits
- RC - Rural Community
- RG - Residential, General
- RS - Residential, Single-Family

TAX MAP NUMBER: 0174-12-06-001.000
Click on Tax Map Number to View Tax Assessor Data.

TAX MAP NUMBER: [0174-12-06-001.000](#)

OLD MAP NUMBER: 194-05-00-006

ACCOUNT NUMBER: 135060

ACREAGE:

OWNER: MOUSTAFA MOUSTAFA,
1184 ORANGEBURG MAL
CIR
ORANGEBURG , SC 2911

FIRE DISTRICT:
0.620.190.20.66

Zoning Classification:

FEMA ZONE, SHEET 12/16/1980: