

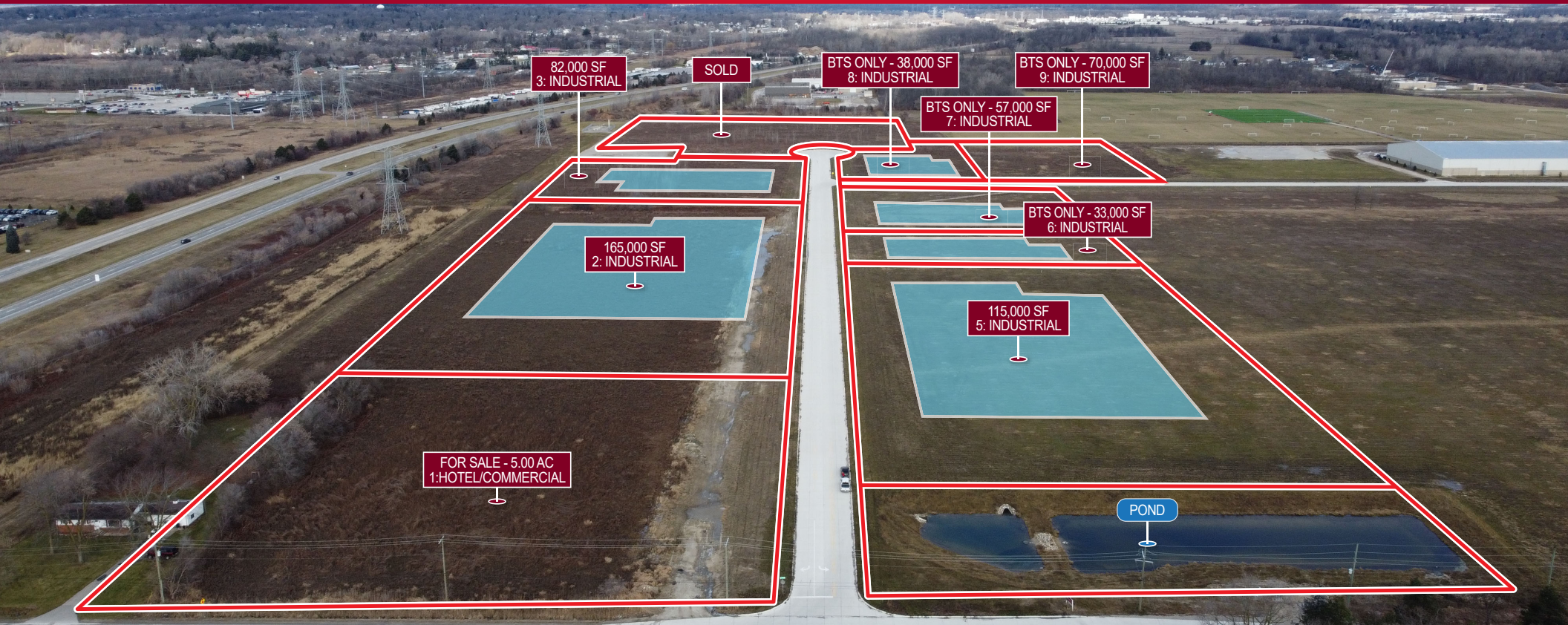
LAND FOR SALE or BUILD TO SUIT



COMMERCIAL REAL ESTATE SERVICES

WASHINGTON INDUSTRIAL PARK

30 Mile Road, Washington Township, MI 48095



LISTING BROKER

Lee & Associates of Michigan

26555 Evergreen Rd, Suite 1060

Southfield, Michigan 48076

phone: 248.351.3500 fax: 248.351.3508

www.Lee-Associates.com

Giancarlo Pinterpe

Senior Vice President

giancarlo.pinterpe@lee-associates.com

phone: 248.567.8003

Bradley Hay

Sales Associate

bradley.hay@lee-associates.com

phone: (248) 567-8005



WASHINGTON INDUSTRIAL PARK: Features



WASHINGTON INDUSTRIAL PARK

Washington Industrial Park offers tremendous freeway visibility on M-53 in Washington Township, Michigan. A full amenity park providing abundant support services, this Industrial Park offers a variety of new high quality mixed use buildings, planned facilities and read-to-build lots with public utilities. 39 acres in total, the park's zoning allows for many potential uses.

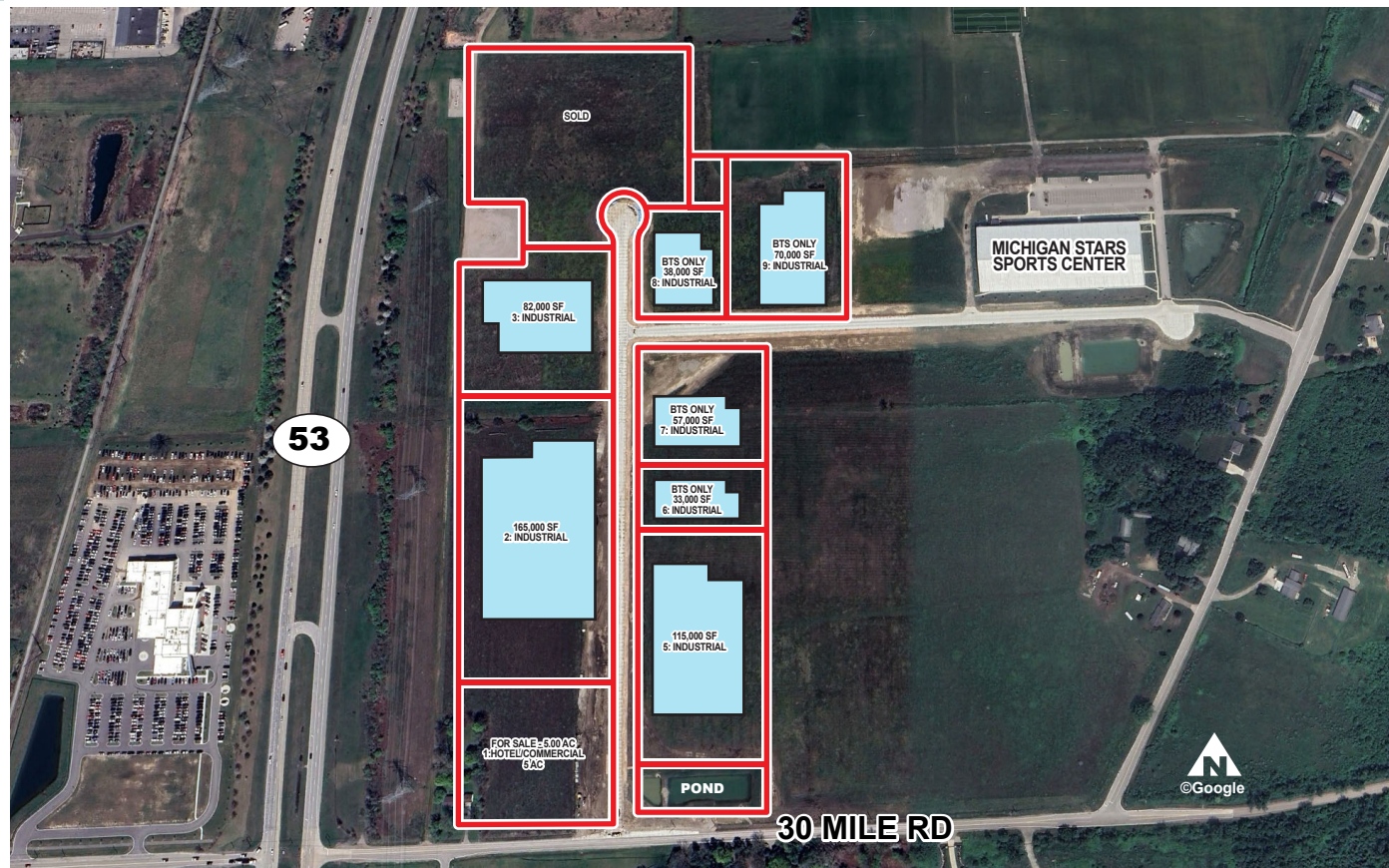
PROPERTY FEATURES

- Commercial / Industrial Lots Available For Sale or Build-to-Suits
- Lots Ranging in Size from 2 - 15 Acres
- BTS Ranging from 30,000-300,000 SF
- Easy Access / Exposure on M-53 Freeway
- Possible Tax Abatement For Qualified Users

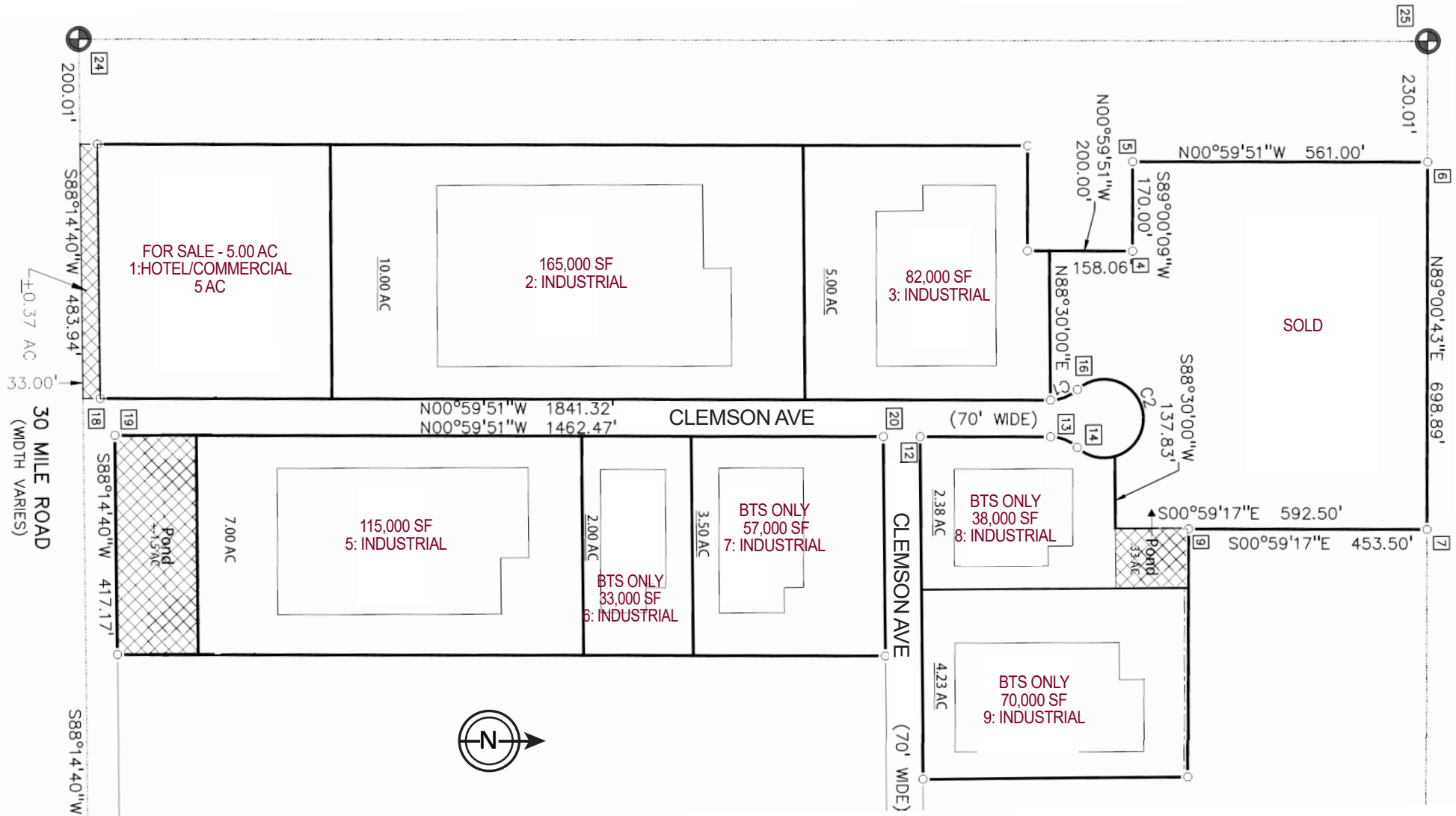
FOR DETAILS CONTACT

Giancarlo Pinterpe
giancarlo.pinterpe@lee-associates.com (248) 567-8003

Bradley Hay
bradley.hay@lee-associates.com (248) 567-8005



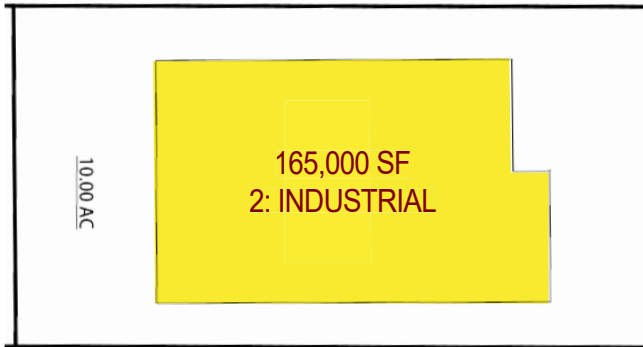
WASHINGTON INDUSTRIAL PARK: Site Plan



Giancarlo Pinterpe, Senior Vice President
giancarlo.pinterpe@lee-associates.com - phone: 248.567.8003

Bradley Hay, Sales Associate
bradley.hay@lee-associates.com - (248) 567-8005

WASHINGTON INDUSTRIAL PARK: BTS Building 1



PROPERTY FEATURES

- 02 Clemson Avenue
- 165,000 SF BTS For Sale or Lease
- Office to Suit (Possible 2-Story Design)
- 28' Clear Height in Shop Space
- 4 Exterior Truckwells
- Corporate Image Elevations Front M-53 Freeway
- Tax Abatement Available for Qualified Users

FOR DETAILS CONTACT

Giancarlo Pinterpe

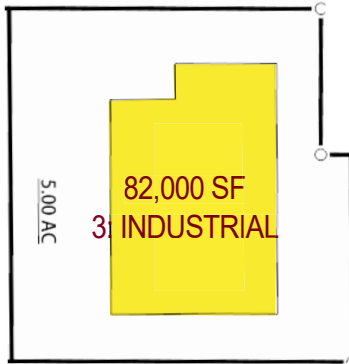
giancarlo.pinterpe@lee-associates.com (248) 567-8003

Bradley Hay

bradley.hay@lee-associates.com (248) 567-8005



WASHINGTON INDUSTRIAL PARK: BTS Building 2



PROPERTY FEATURES

- 03 Clemson Avenue
- 82,000 SF BTS For Sale or Lease
- Office to Suit (Possible 2-Story Design)
- 28' Clear Height in Shop Space
- 3 Exterior Truckwells
- Corporate Image Elevations Front M-53 Freeway
- Tax Abatement Available for Qualified Users

FOR DETAILS CONTACT

Giancarlo Pinterpe

giancarlo.pinterpe@lee-associates.com (248) 567-8003

Bradley Hay

bradley.hay@lee-associates.com (248) 567-8005

