



# 21 Keewaydin Drive

## Salem, NH

**For Lease**

**33,000 Sq. Ft.**

**First Class Office**

Located in Southern New Hampshire at Exit #2 off Interstate 93. Twenty One Keewaydin Drive is a newly constructed, three story building, offering 33,000 sq. ft. of first class office/medical space.

This attractive facade with wrap around glass has pleasant views of the beautiful landscape. This exceptionally maintained building has great access and visibility to Interstate 93 North and South.

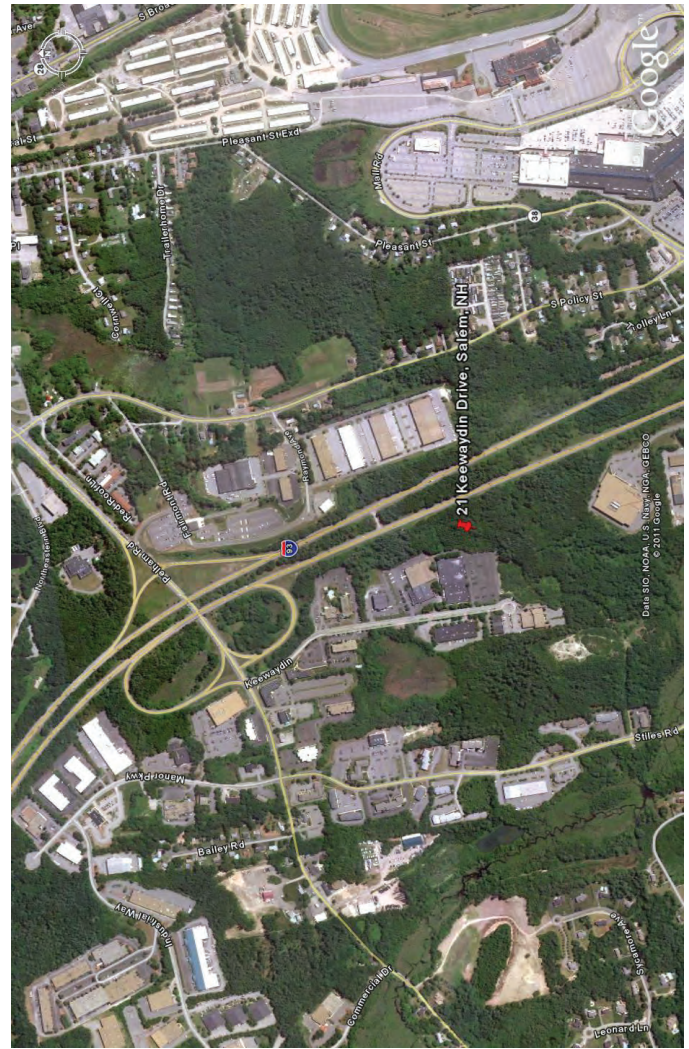
Just 30 minutes to Boston  
and only 20 minutes to  
Manchester.

For further information,  
please call our main  
office or visit our website:

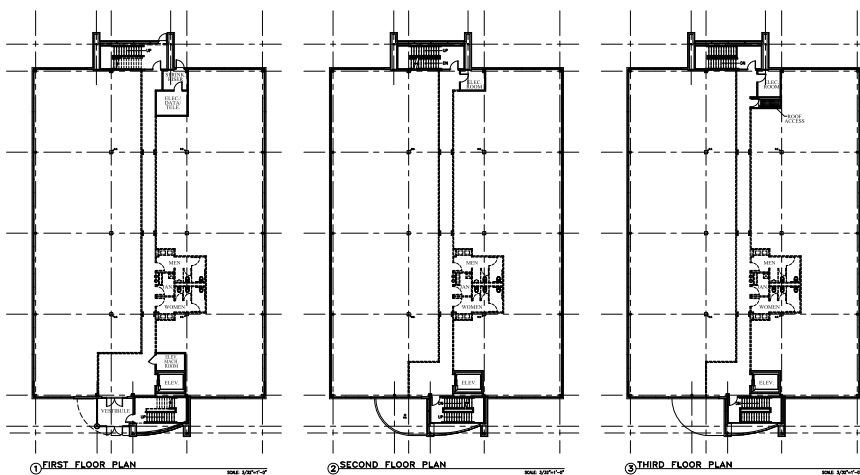


# Building Specifications

Land:	15.4 acres shared
Zoning:	Commercial
Building Size:	33,000 square feet
Year Built:	Proposed
Type:	Three Story, Structural Steel, EIFS
Parking:	5.5 per 1,000
Ceiling Height:	9'2" Finished
Sprinkled:	Yes
Electrical Service:	1,200 Amp 3 phase 480 volt
HVAC:	Split System
Type Fuel:	Natural Gas
Sewer Water:	Municipal Water/Sewer



## Sample Floor Plans

[illegible]

9 Red Roof Lane  
Salem, NH 03079  
(603) 894-1104

[www.BrooksProperties.com](http://www.BrooksProperties.com)