

11085

Harmon Road

FOR SUBLEASE

115,000 - 225,000 SF

through 1/31/2029

CLASS A
INDUSTRIAL WAREHOUSE



CONTACT:

Bob Scully
Senior Vice President
T +1 817 919 4890
bob.scully@cbre.com

Brice Wells
Senior Vice President
T +1 817 333 1114
brice.wells@cbre.com

CBRE



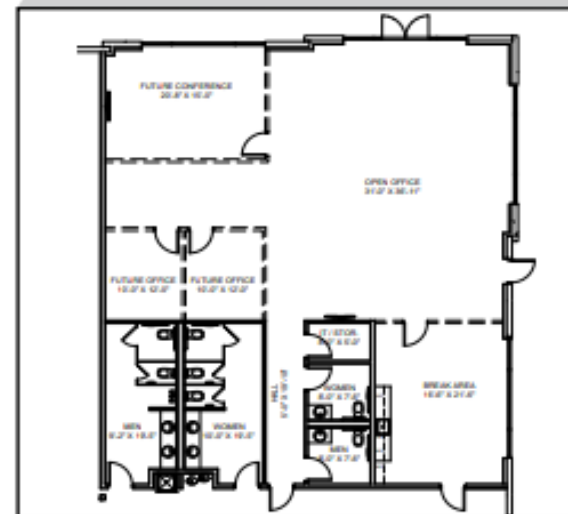
Property Features

- Class A building
- Building Size: 267,280 SF
- Available: 115,000 - 225,000 SF
- Office SF: 3,134 SF
- Loading: Rear-loaded
- Truck Court: 185'
- Clear Height: 32'
- Levelers: (10) McGuire 40,000lb
7'x8' Mechanical
- Trailer Parking: 75 spaces

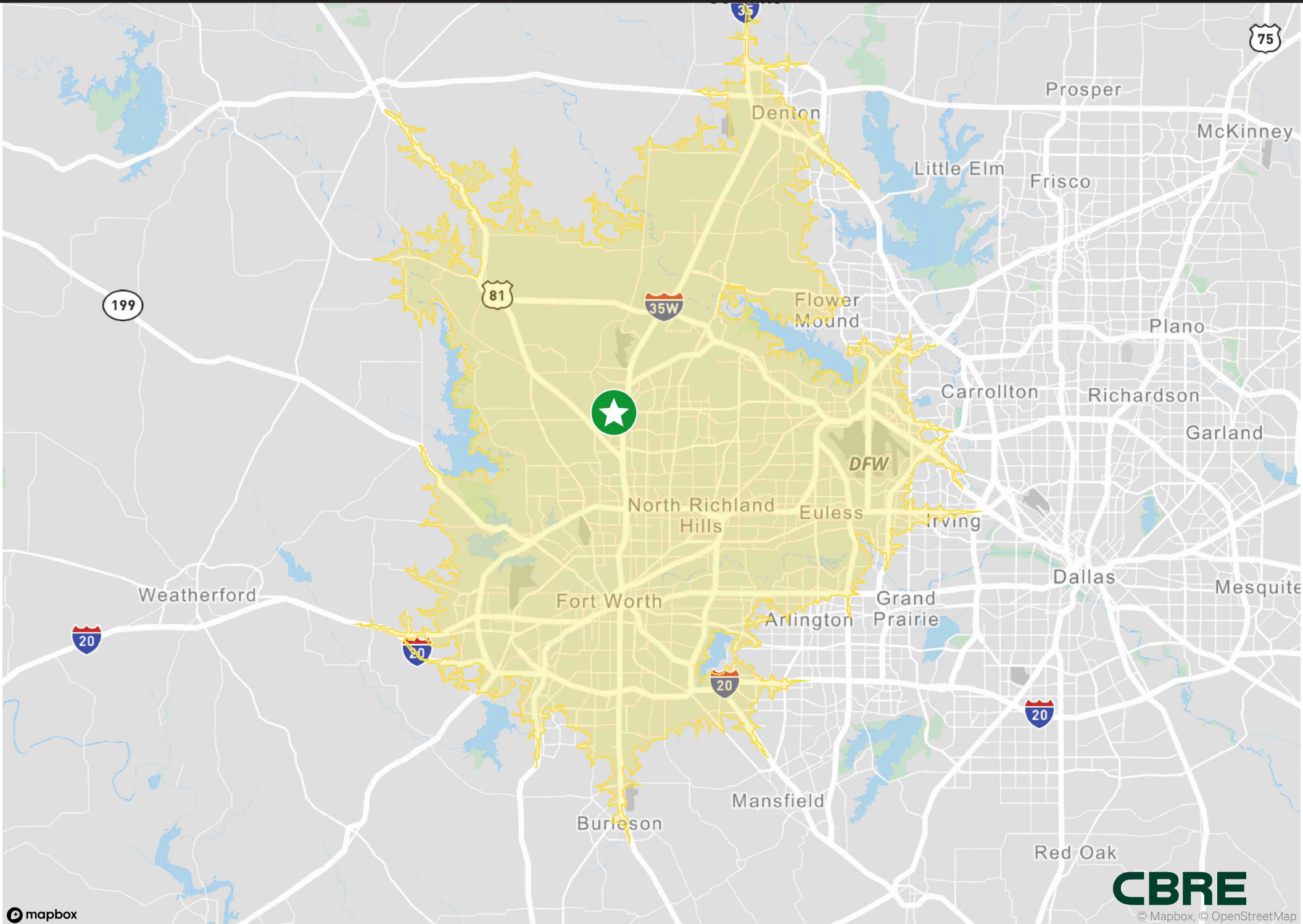


BUILDING 1

Building Size:	267,280 SF
Spec Office:	3,134 SF
Docks:	59
Levelers:	(10) McGuire 40,000 lb 7'x8' Mechanical
Drive-Ins:	2
Column Spacing	52' x 60'



30 Minute Drive Time Map



11085 Harmon Road, Fort Worth TX



CONTACT:

Bob Scully
Senior Vice President
T +1 817 919 4890
bob.scully@cbre.com

Brice Wells
Senior Vice President
T +1 817 333 1114
brice.wells@cbre.com

CBRE