

# FUSILIER COMMERCIAL

## PARTIALLY DEVELOPED TOWNHOME / SFR / BTR SITE HARMONY, FL



Asking Price: \$895,000

- Partially Developed Townhome / SFR Site - Can be built as "Apartments" and ideal for Build-to-Rent Development
- Mass Graded - Off-Site Retention in Place - Utilities at Site
- Proposed Density: 25-30 +/- TH / MF Units - 15 +/- SFR Units
- Highschool/Middle/Elementary School are all located in community, A+ rated and the best school system in Osceola County.
- Development can utilize the Harmony Community Amenities already in place which include Multiple Pools, Parks, Playgrounds, Walking Trails and Community Marina

Incredible opportunity to purchase a Partially Developed Townhome / Single Family Site in the Harmony Master Planned Development. The Harmony community is located just south of the booming Lake Nona area in one of the busiest markets in Central Florida. The current National Builders within the Harmony Community are Pulte, D.R. Horton, Jones Homes and Lennar with almost all other National Builders have projects in the immediate area.

**CHRIS PIXLEY**

352.267.4244

christopher.pixley@gmail.com

*FUSILIER*  
REALTY GROUP

**STEVE FUSILIER**

407.448.2733

steve@realtygroupfl.com



# FUSILIER COMMERCIAL

## PARTIALLY DEVELOPED TOWNHOME / SFR SITE HARMONY, FL



**CHRIS PIXLEY**

352.267.4244

[christopher.pixley@gmail.com](mailto:christopher.pixley@gmail.com)

*FUSILIER*  
REALTY GROUP

**STEVE FUSILIER**

407.448.2733

[steve@realtygroupfl.com](mailto:steve@realtygroupfl.com)

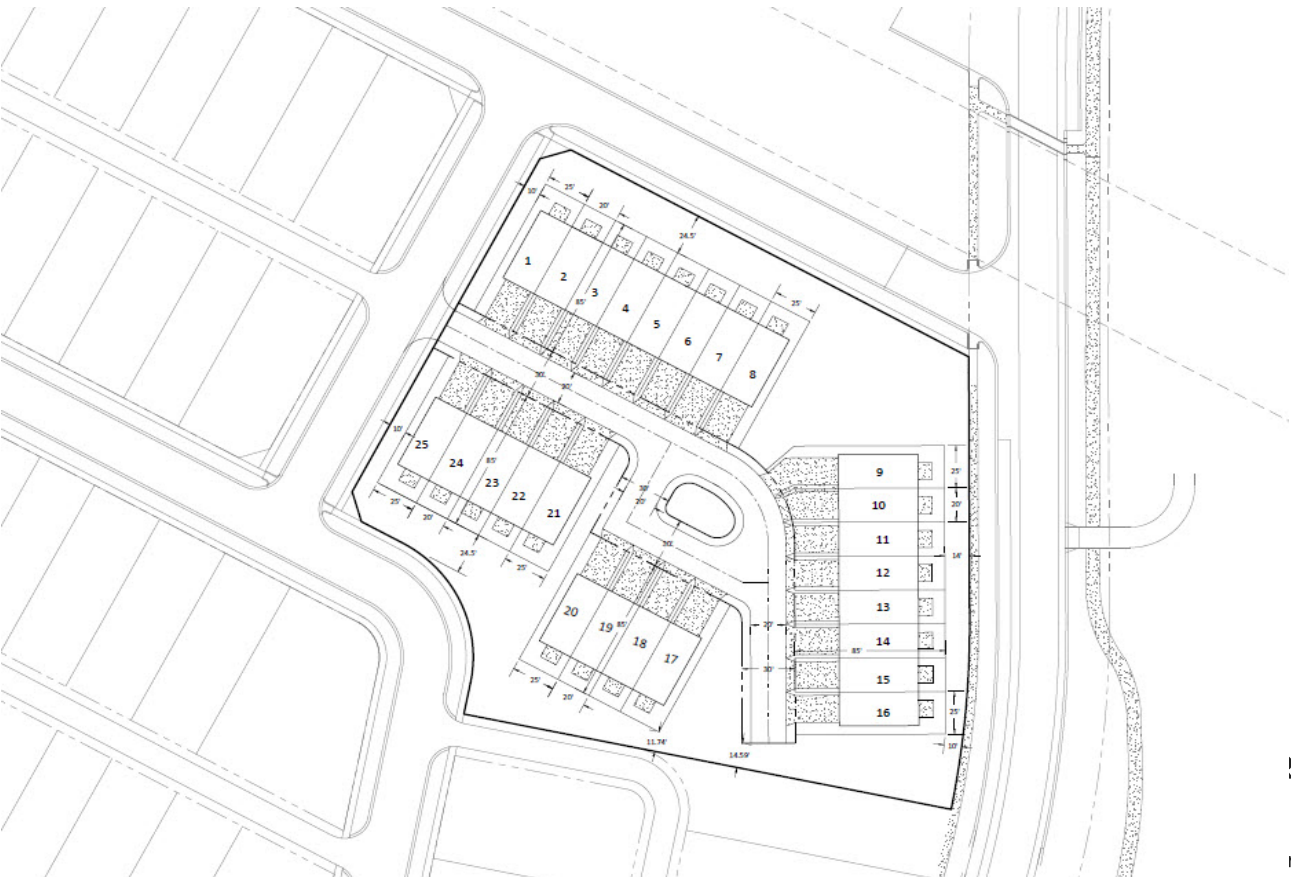


# FUSILIER COMMERCIAL

## \*BTR / Apartment Concept Site Plan



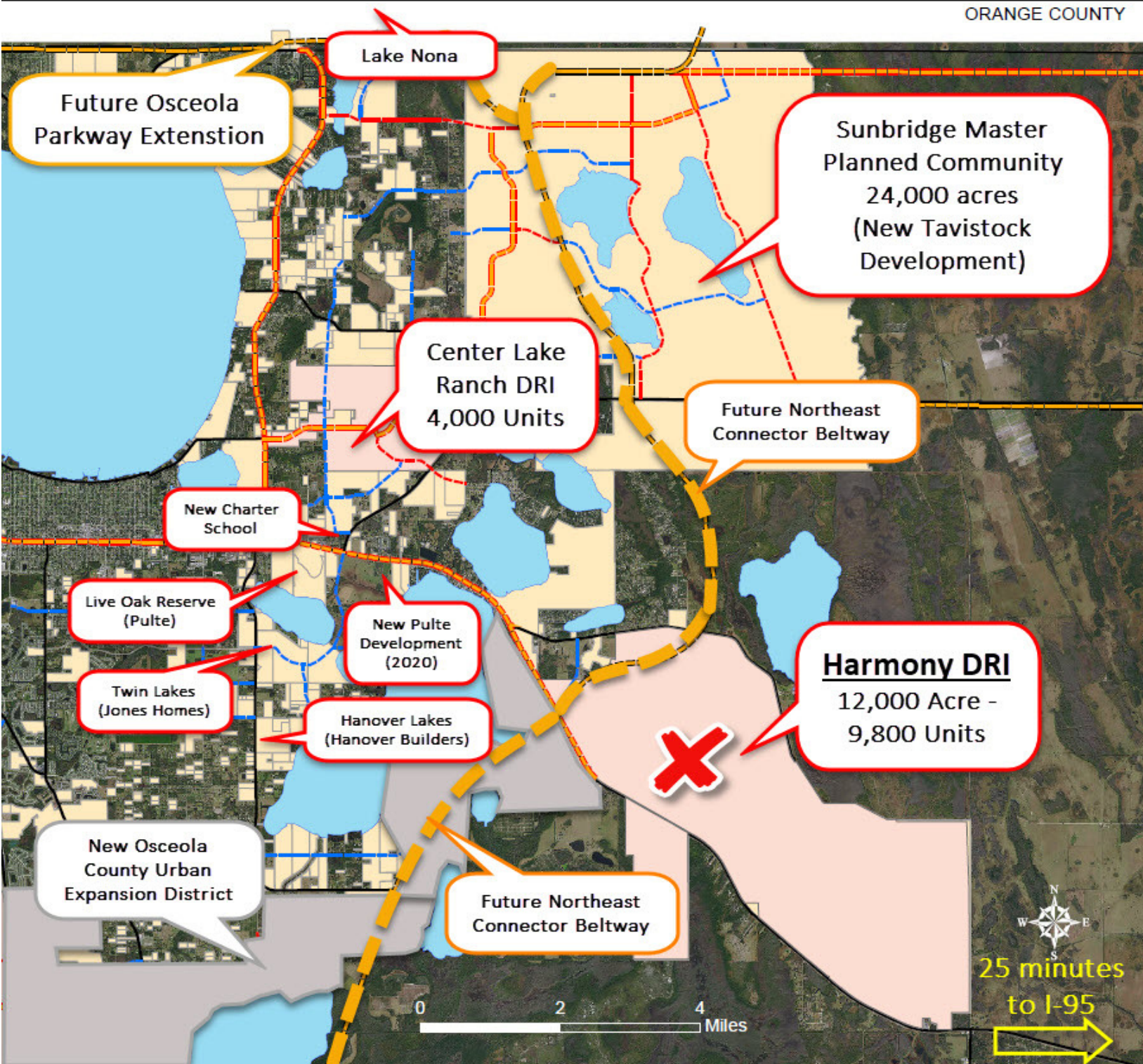
## \*Non BTR / Apartment Concept Site Plan





# FUSILIER COMMERCIAL

## PARTIALLY DEVELOPED TOWNHOME / SFR SITE HARMONY, FL



**CHRIS PIXLEY**

352.267.4244

christopher.pixley@gmail.com

*FUSILIER*  
REALTY GROUP

**STEVE FUSILIER**

407.448.2733

steve@realtygroupfl.com