

25445 W. OUTER DRIVE
MELVINDALE, MICHIGAN

INDUSTRIAL FOR LEASE
70,961 Square Feet Available



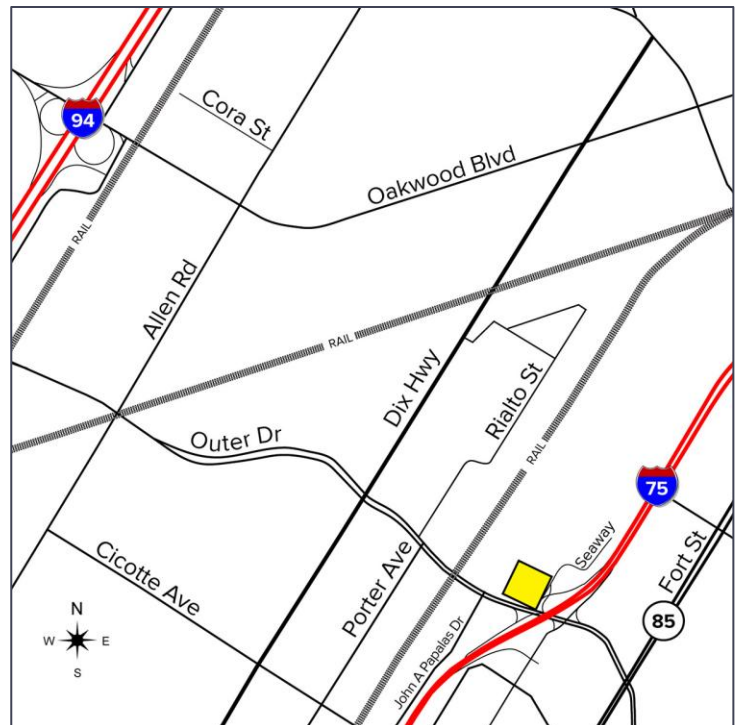
**SIGNATURE
ASSOCIATES**
KNOW SIGNATURE | KNOW RESULTS

IMMEDIATE ACCESS TO I-75



PROPERTY FEATURES

- 70,961 square feet available
- 500 square feet office
- 22' clear height
- (1) 12' x 12' grade level door
- (4) truckwells
- 1000 amps, 480 volts, 3-phase, heavy power
- Clean warehouse/distribution space
- The property features rail access
- Lease Rate: \$5.50/sq. ft. NNN



For more information, please contact:

ALEX TIMMIS
(248) 359 0623
atimmis@signatureassociates.com

BRAD VIERGEVER
(248) 799 3146
bviergever@signatureassociates.com

SIGNATURE ASSOCIATES
One Towne Square, Suite 1200
Southfield, MI 48076
www.signatureassociates.com

25445 W. Outer Drive – Melvindale, Michigan

Industrial For Lease

70,961
Square Feet
AVAILABLE

Additional Photo



For more information, please contact:

ALEX TIMMIS
(248) 359 0623
atimmis@signatureassociates.com

BRAD VIERGEVER
(248) 799 3146
bviergever@signatureassociates.com

SIGNATURE ASSOCIATES
One Towne Square, Suite 1200
Southfield, MI 48076
www.signatureassociates.com

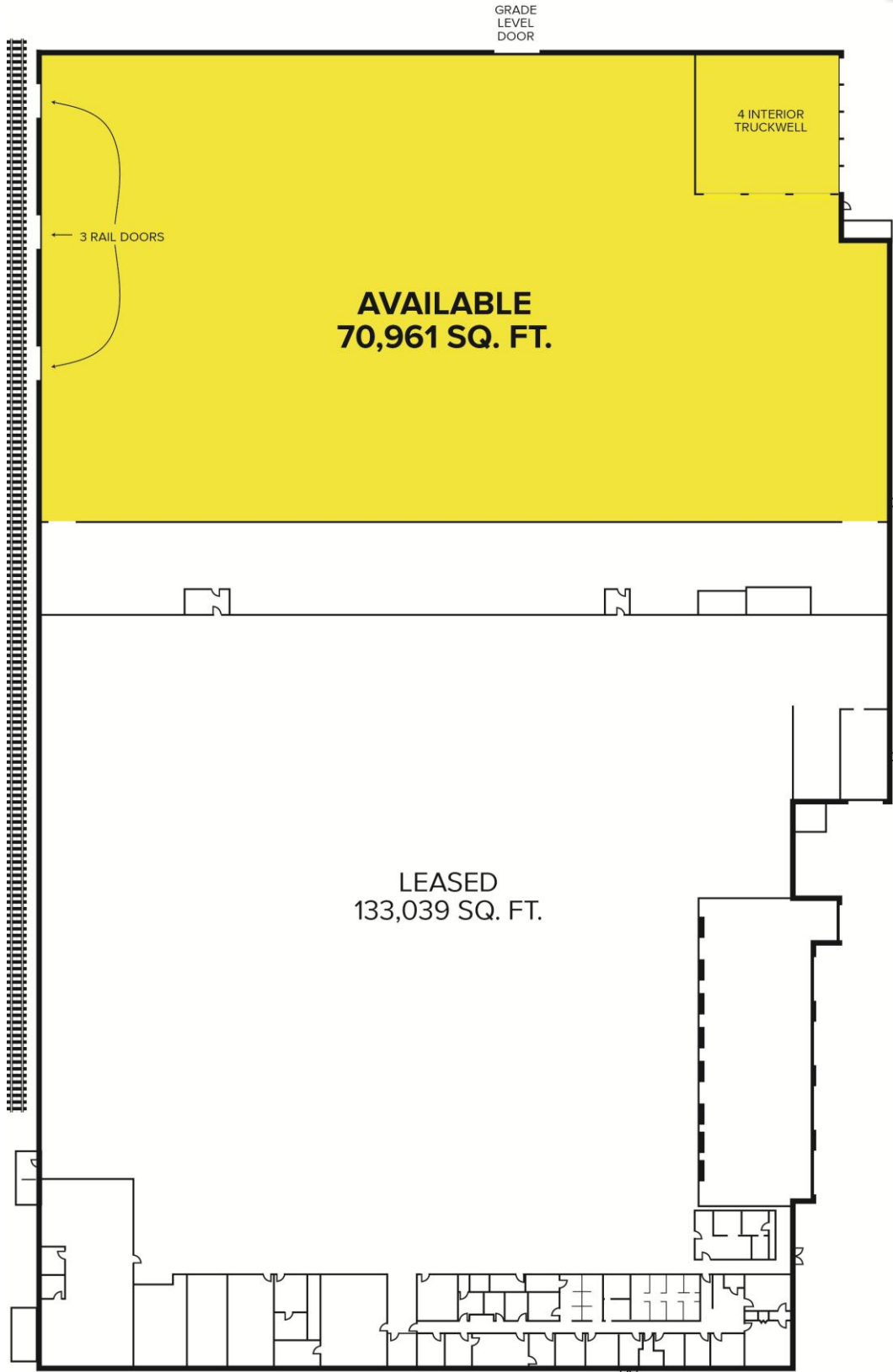
Information is subject to verification and no liability for errors or omissions is assumed. Price is subject to change and listing withdrawal.

25445 W. Outer Drive – Melvindale, Michigan

Industrial For Lease

70,961
Square Feet
AVAILABLE

Site Plan



For more information, please contact:

ALEX TIMMIS
(248) 359 0623
atimmis@signatureassociates.com

BRAD VIERGEVER
(248) 799 3146
bviergever@signatureassociates.com

SIGNATURE ASSOCIATES
One Towne Square, Suite 1200
Southfield, MI 48076
www.signatureassociates.com

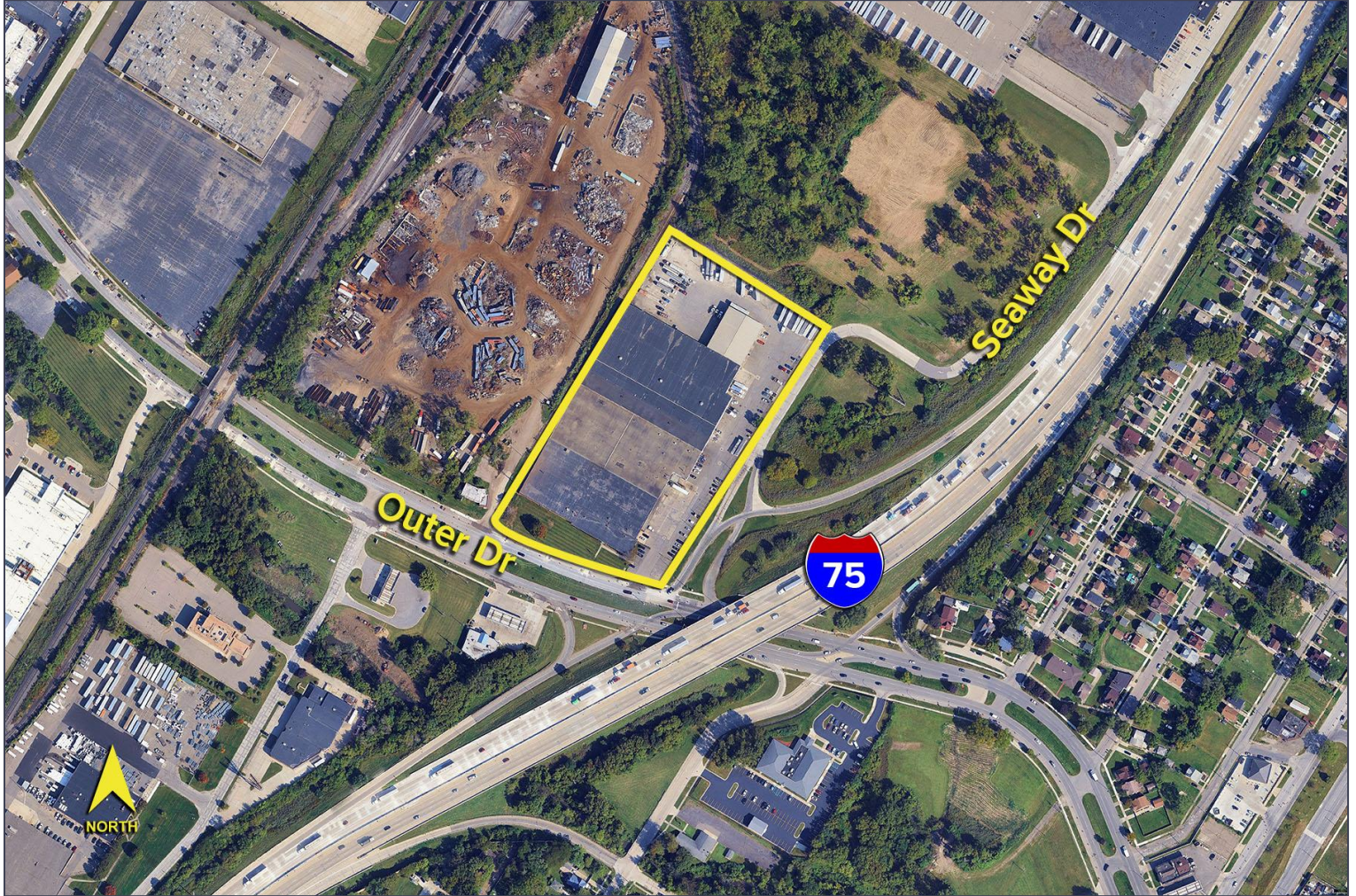
Information is subject to verification and no liability for errors or omissions is assumed. Price is subject to change and listing withdrawal.

25445 W. Outer Drive – Melvindale, Michigan

Industrial For Lease

70,961
Square Feet
AVAILABLE

Aerial



For more information, please contact:

ALEX TIMMIS
(248) 359 0623
atimmis@signatureassociates.com

BRAD VIERGEVER
(248) 799 3146
bviergever@signatureassociates.com

SIGNATURE ASSOCIATES
One Towne Square, Suite 1200
Southfield, MI 48076
www.signatureassociates.com

Information is subject to verification and no liability for errors or omissions is assumed. Price is subject to change and listing withdrawal.