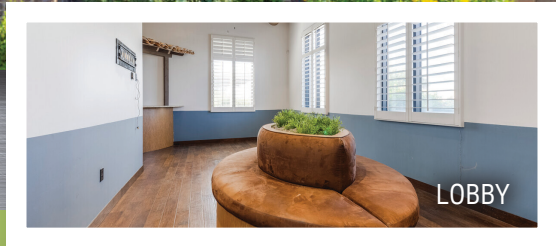




OFFICE SPACE FOR SALE OR LEASE



LOBBY

GREENFIELD PROFESSIONAL PLAZA

1635 N. Greenfield Road | Mesa, AZ 85205

SALE PRICE: \$1,280,000

LEASE RATE:

Suite 103: 3,010 sf
Space offered at: \$24.00/sf NNN



FRONT DESK



TREATMENT AREA

For more information please contact:

Jeremy Johnson
Senior Property Manager

602.252.9300 | jj@casehuff.com

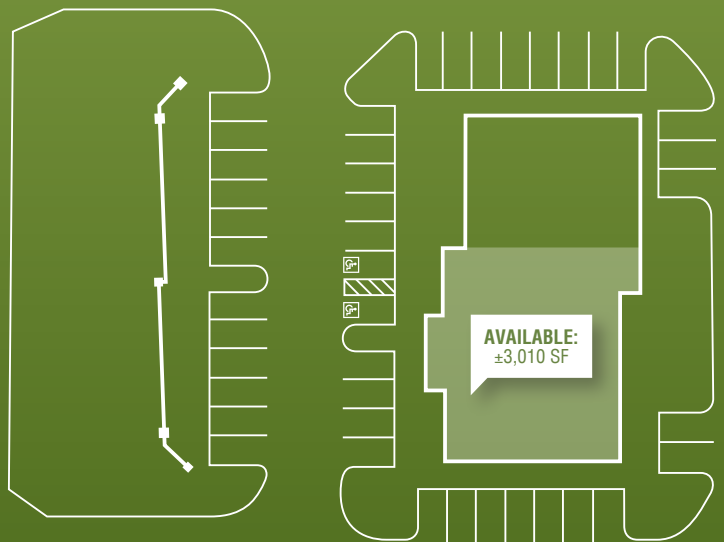
PROFESSIONALLY LEASED & MANAGED BY



www.casehuff.com

Site Plan

N Greenfield Road



GREENFIELD PROFESSIONAL PLAZA

INTERIOR PHOTOS



PROFESSIONALLY LEASED & MANAGED BY



www.casehuff.com

DISCLAIMER: No warranty or representation, express or implied, is made to the accuracy of the information contained herein and same is submitted subject to errors, omissions, change of price, rental or other conditions, withdrawal without notice and to any special listing conditions imposed by our principals.

GREENFIELD PROFESSIONAL PLAZA

INTERIOR/EXTERIOR PHOTOS



PROFESSIONALLY LEASED & MANAGED BY

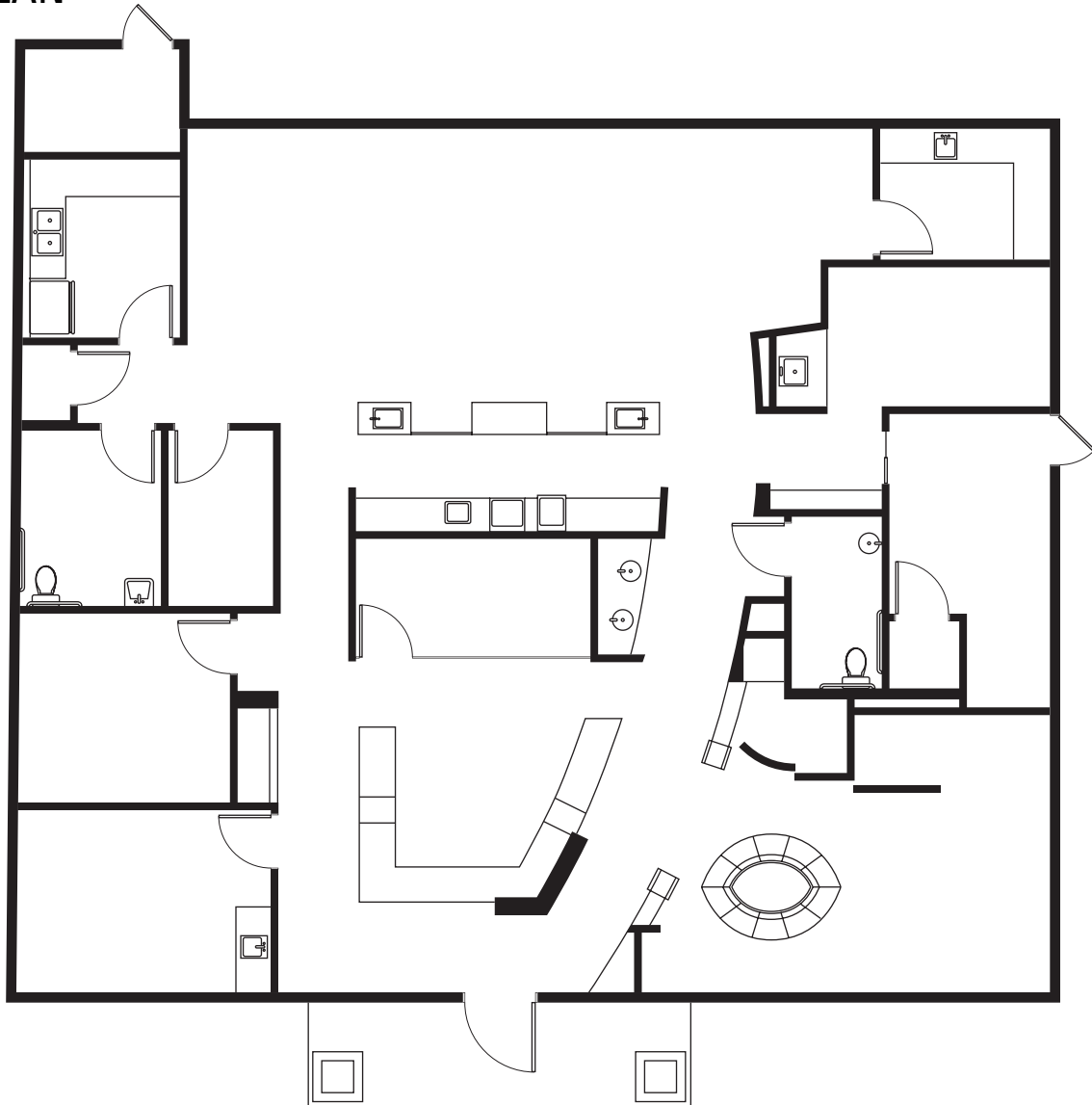


www.casehuff.com

DISCLAIMER: No warranty or representation, express or implied, is made to the accuracy of the information contained herein and same is submitted subject to errors, omissions, change of price, rental or other conditions, withdrawal without notice and to any special listing conditions imposed by our principals.

GREENFIELD PROFESSIONAL PLAZA

FLOORPLAN



Sale Price: \$1,280,000

Lease Rate:

Suite 103: 3,010 sf

Space offered at: \$24.00/sf NNN

Location

Just a half mile south of Falcon Field Airport, two miles south of the Loop 202. Suite 103 has visibility on Greenfield Road.

For more information please contact:

Jeremy Johnson

Senior Property Manager

602.252.9300 | jj@casehuff.com

PROFESSIONALLY LEASED & MANAGED BY



www.casehuff.com

DISCLAIMER: No warranty or representation, express or implied, is made to the accuracy of the information contained herein and same is submitted subject to errors, omissions, change of price, rental or other conditions, withdrawal without notice and to any special listing conditions imposed by our principals.