

FOR LEASE



Bellaire Medical Plaza

5420 DASHWOOD DR
HOUSTON, TX 77081

[CBRE.COM / PROPERTIES](https://www.cbre.com/properties)

CBRE



Overview

Bellaire Medical Plaza is a 3-story medical office building offering 57,988 SF of medical space in the heart of Bellaire. This property is the perfect choice for medical professionals and healthcare services looking to establish a strong presence in the Bellaire submarket

HIGHLIGHTS

- Newly renovated Spec Suites available for immediate occupancy
- Recent renovations include: Upgraded corridor lighting, newly renovated lobby restroom and roof renovations
- Ample surface parking for patients and staff
- Covered patient drop-off for a convenient arrival and pick-up experience
- Monument signage available for maximum visibility
- Located one block from the Bellaire Triangle which consists of an abundance of restaurants and retail in the area

57,988

RENTABLE BUILDING AREA (SF)

3

STORY

1994

YEAR BUILT

5.10

PARKING RATIO PER 1,000SF

Demographics

(3-MILE RADIUS)



2024 POPULATION

231,317



CONSUMER SPEND ON HEALTHCARE

\$756.5M



AVG HOUSEHOLD INCOME

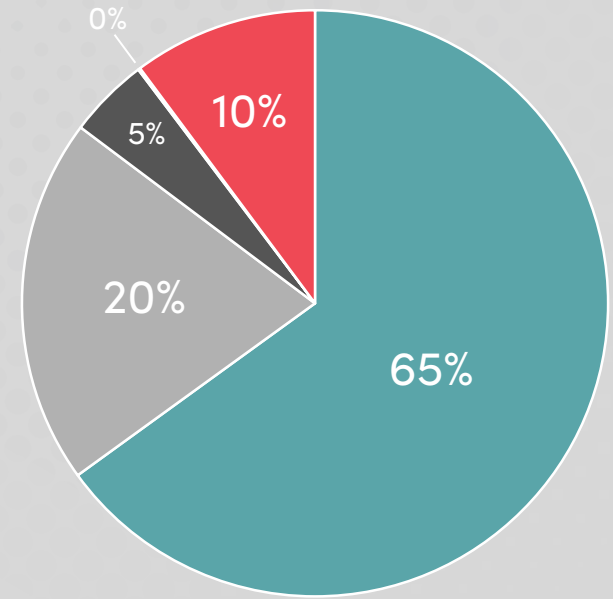
\$125,769



MEDIAN HOME VALUE

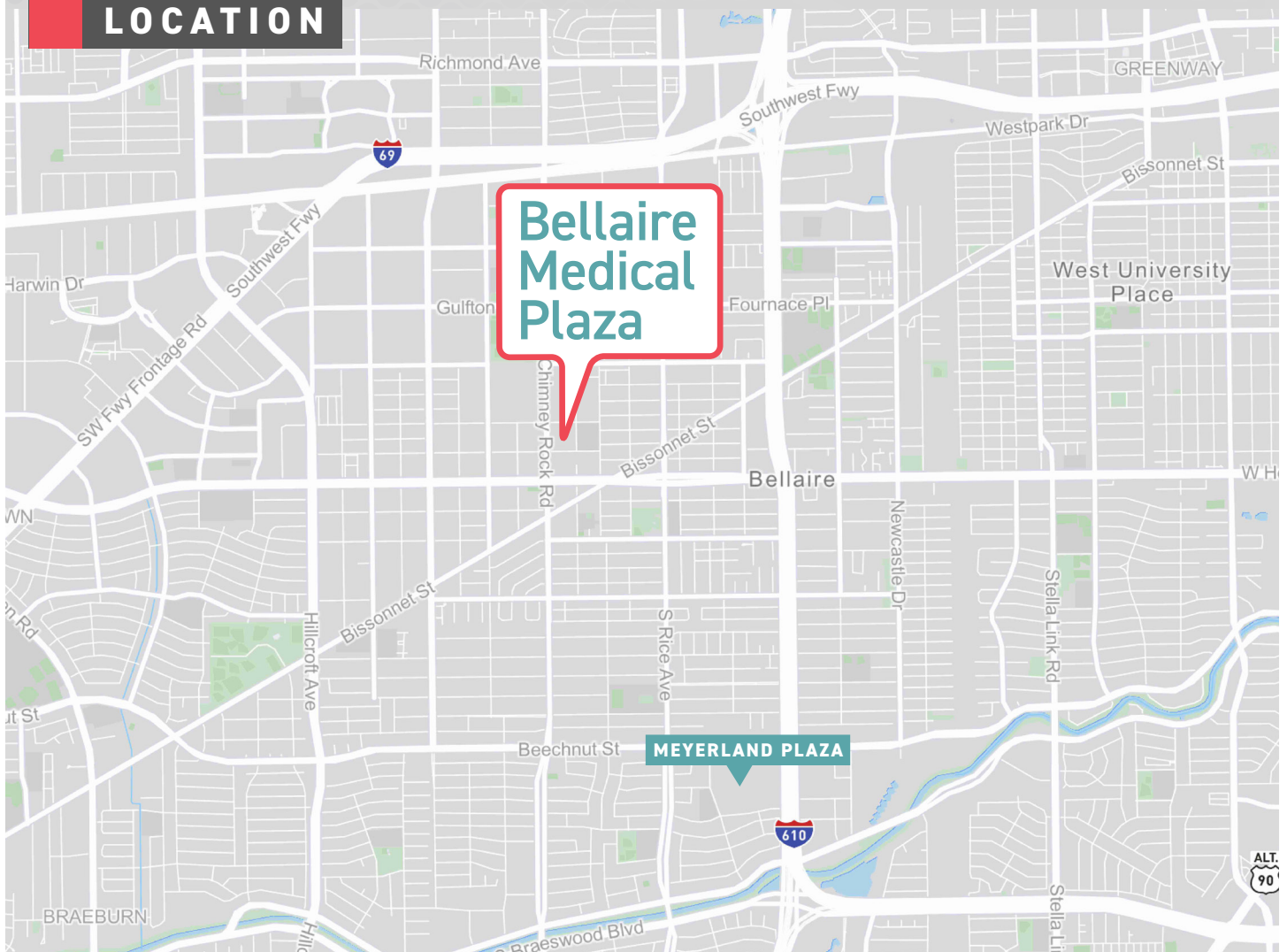
\$545,912

INSURANCE MIX (3 MILES)



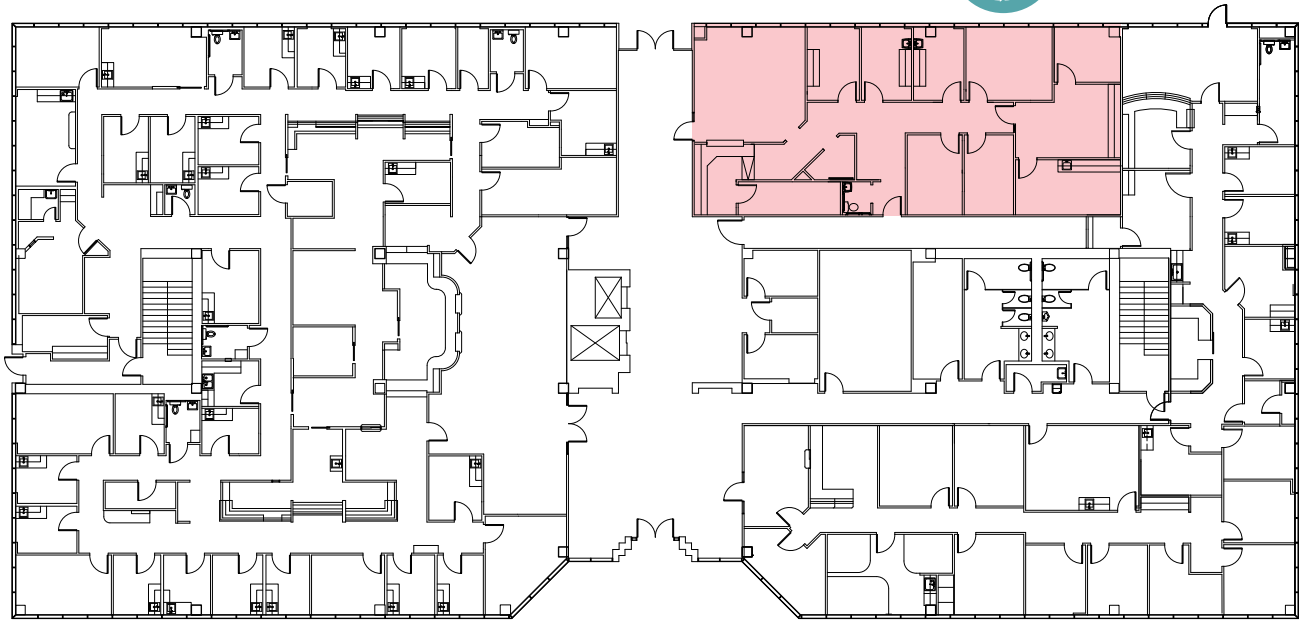
■ PRIVATE ■ MEDICAID ■ MEDICARE ■ MILITARY ■ MULTIPLE

LOCATION



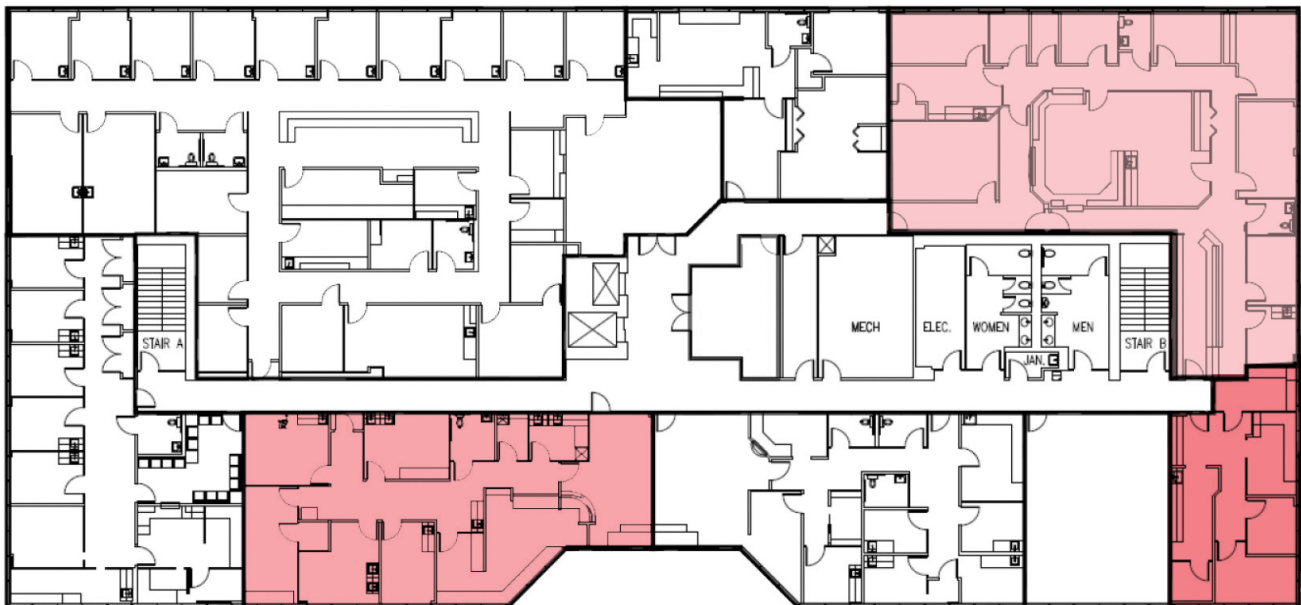
1st Floor Availabilities

SUITE 101
2,640 SF



2nd Floor Availabilities

SUITE 202
3,876 SF



SUITE 207
2,320 SF

SPEC SUITE



SUITE 204
937 SF



3rd Floor Availabilities

SUITE 302
8,314 SF



SUITE 301
1,371 SF



SUITE 308
1,393 SF



SUITE 306
1,261 SF

SPEC SUITE

SUITE 304
4,419 SF



*Suite 302/304/306/308 - Contiguous for up to 15,387 SF

AVAILABLE SUITES		
SUITE 101	2,640 SF	VIRTUAL TOUR
SUITE 202	3,860 SF	VIRTUAL TOUR
SUITE 204	937 SF	VIRTUAL TOUR
SUITE 207	SPEC SUITE 2,320 SF	VIRTUAL TOUR
SUITE 301	1,371 SF	VIRTUAL TOUR
SUITE 302	8,314 SF	VIRTUAL TOUR
SUITE 304	4,419 SF	VIRTUAL TOUR
SUITE 306	SPEC SUITE 1,261 SF	
SUITE 308	1,393 SF	VIRTUAL TOUR

Bellaire Medical Plaza

5420 DASHWOOD DR
HOUSTON, TX 77081

C O N T A C T U S

Max Lozmack

Vice President
+1 713 598 9393
max.lozmack@cbre.com

Annie Peretich

Associate
+1 317 688 1616
annie.peretich@cbre.com

© 2026 CBRE, Inc. All rights reserved. This information has been obtained from sources believed reliable, but has not been verified for accuracy or completeness. You should conduct a careful, independent investigation of the property and verify all information. Any reliance on this information is solely at your own risk. CBRE and the CBRE logo are service marks of CBRE, Inc. All other marks displayed on this document are the property of their respective owners, and the use of such logos does not imply any affiliation with or endorsement of CBRE. Photos herein are the property of their respective owners. Use of these images without the express written consent of the owner is prohibited.