

# For Lease

Stratford Business Center  
651 S. Stratford Drive  
Meridian, ID

Colliers



**Lew Manglos, CCIM**  
208 472 2841  
[lew.manglos@colliers.com](mailto:lew.manglos@colliers.com)



# Property Overview

Address:	651 South Stratford Drive   Meridian, ID
Lease Type:	NNN
Parking:	5+/1,000 SF



# Space Available

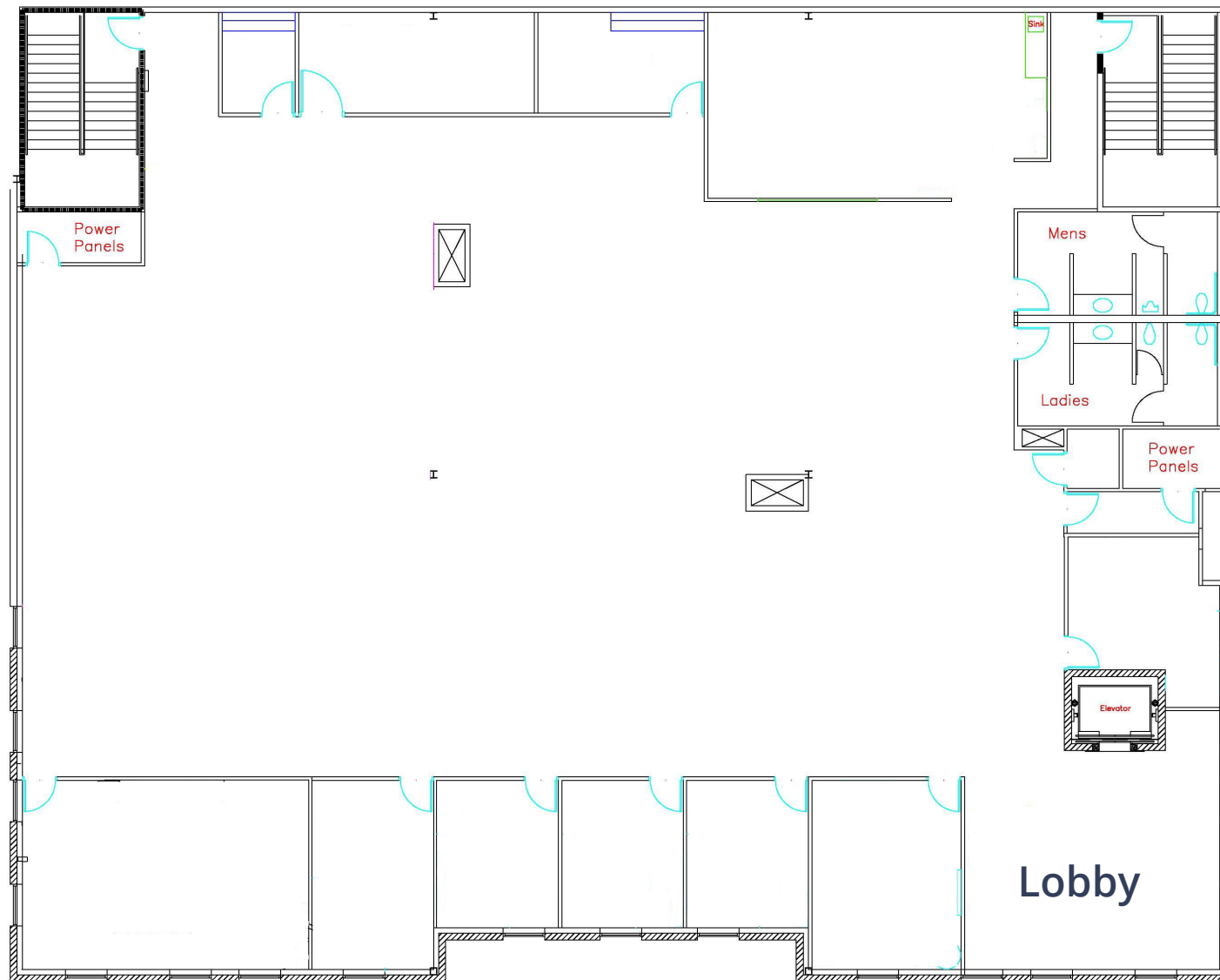
Suite	Size	Rate
200	10,616 SF	\$13.00/SF

# Key Highlights

- Excellent office location in Central Meridian
- Located between E. Corporate Drive and S. Stratford Drive
- Easy access to freeway
- Abundant parking
- Flexible configuration



# Floor plan



2<sup>nd</sup> Floor

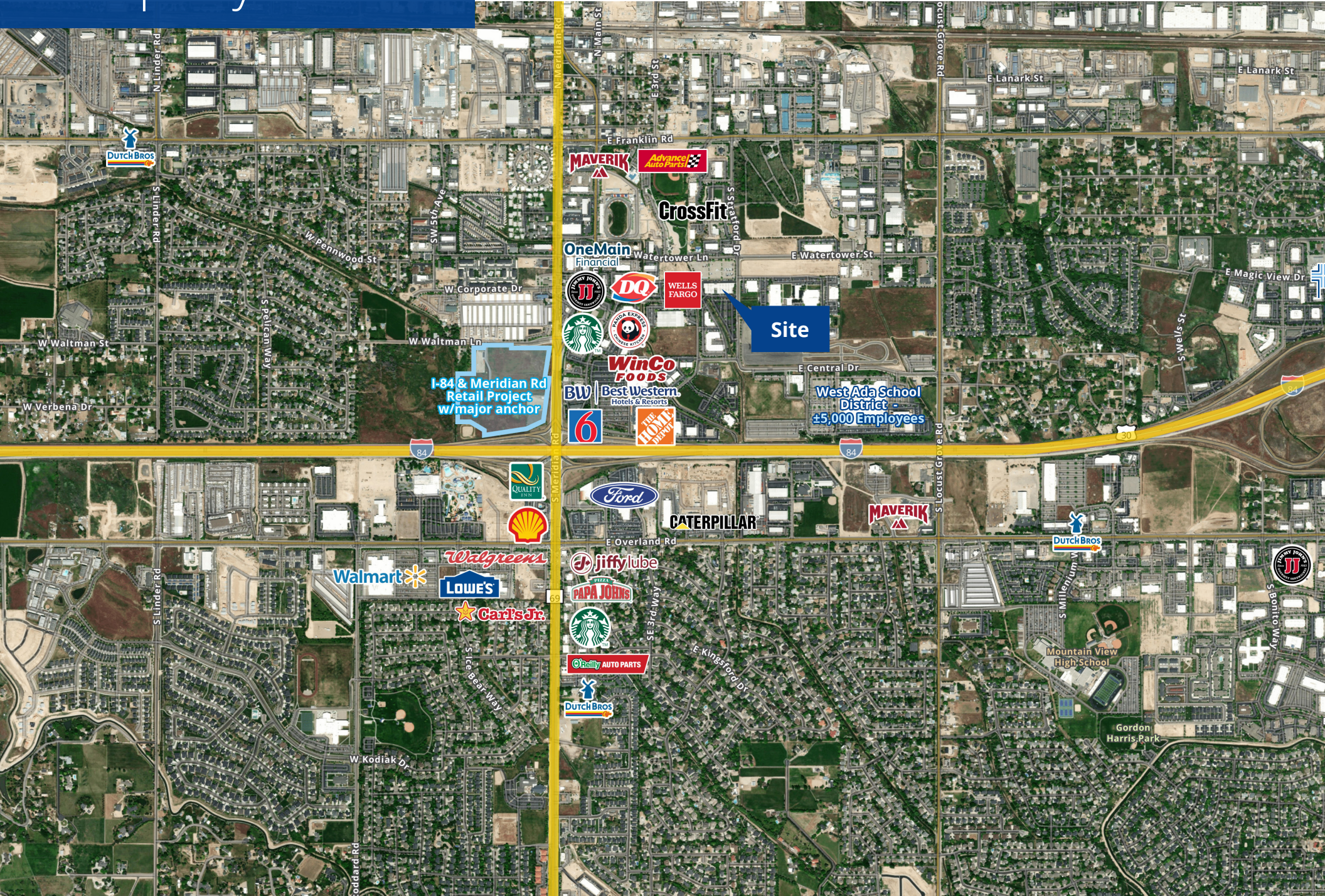


# Property Photos





# Property Aerial







755 West Front Street Suite 300,  
Boise, Idaho 83702  
208 345 9000  
[colliers.com/idaho](https://colliers.com/idaho)

This document has been prepared by Colliers for advertising and general information only. Colliers makes no guarantees, representations or warranties of any kind, expressed or implied, regarding the information including, but not limited to, warranties of content, accuracy and reliability. Any interested party should undertake their own inquiries as to the accuracy of the information. Colliers excludes unequivocally all inferred or implied terms, conditions and warranties arising out of this document and excludes all liability for loss and damages arising there from. This publication is the copyrighted property of Colliers and/or its licensor(s). © 2024. All rights reserved. This communication is not intended to cause or induce breach of an existing listing agreement. Colliers Paragon, LLC.