

FOR LEASE

3053 E 11TH STREET
LOS ANGELES, CA 90023

±10,000 SF

INDUSTRIAL BUILDING
JUST EAST OF DTLA
HEAVY POWER & GAS



For more information, please contact:

Daniel Park

(213) 446-0396

Danielpark777@hotmail.com

DRE# 01227056

PARK INDUSTRIAL
SPECIALIZING IN INDUSTRIAL REAL ESTATE SERVICES

Park Industrial Realty
800 McGarry St, 5th Floor
Los Angeles, CA 90021
Corporation DRE# 01983713

Building SF:	10,000 SF	• Industrial building just east of Downtown LA Fashion
Office SF:	750 SF	• Wood bow truss ceiling with minimum 14' clear height and 21' maximum height to the ceiling
Year Built:	1938	• Heavy 3 phase electrical power
Clear Height:	14'	• Gas served
# Parking:	5	• 5 head in parking on the street
Loading:	1 GL, 1 DH	• Great for screen printing or any manufacturing operations
Power:	400 A, 120-240 V, 3 Ph, 4 W	
# Restrooms:	2	
Zoning:	M2	
Lease Rate:	\$8,900 (\$0.89/SF) Gross	

All information has been furnished from sources which we deem reliable, but for which we assume no liability. All measurements are approximate. Broker/Owner do not warrant its accuracy. Buyer/Lessee must verify all information.

5170 | 24 | 2000

SCALE 1" = 60'

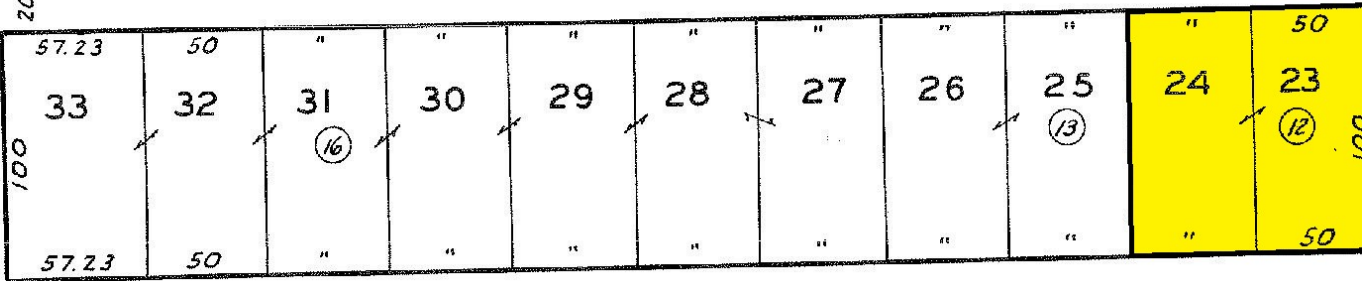
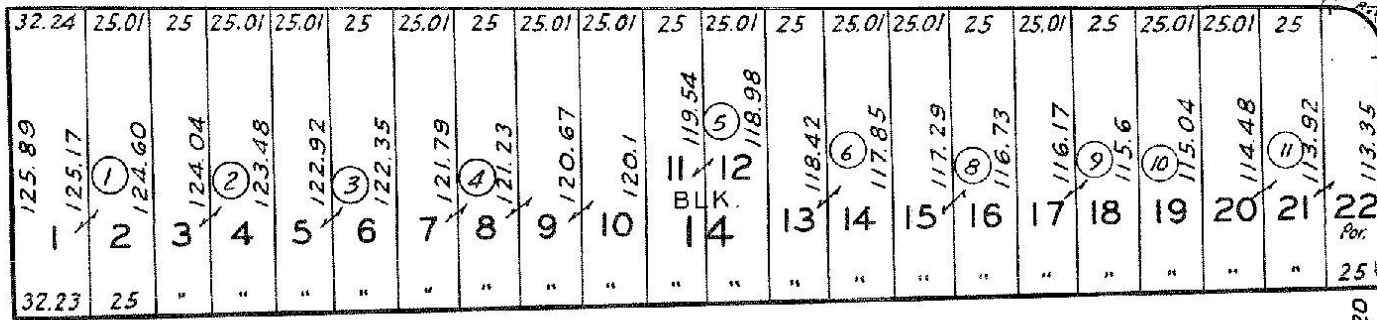
OLYMPIC

BLVD.

100

100

EVERGREEN AVE. 60



60 DACOTAH ST. 60

60

11TH

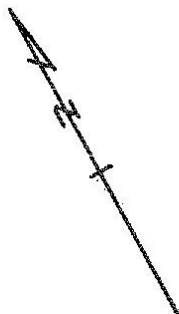
ST.

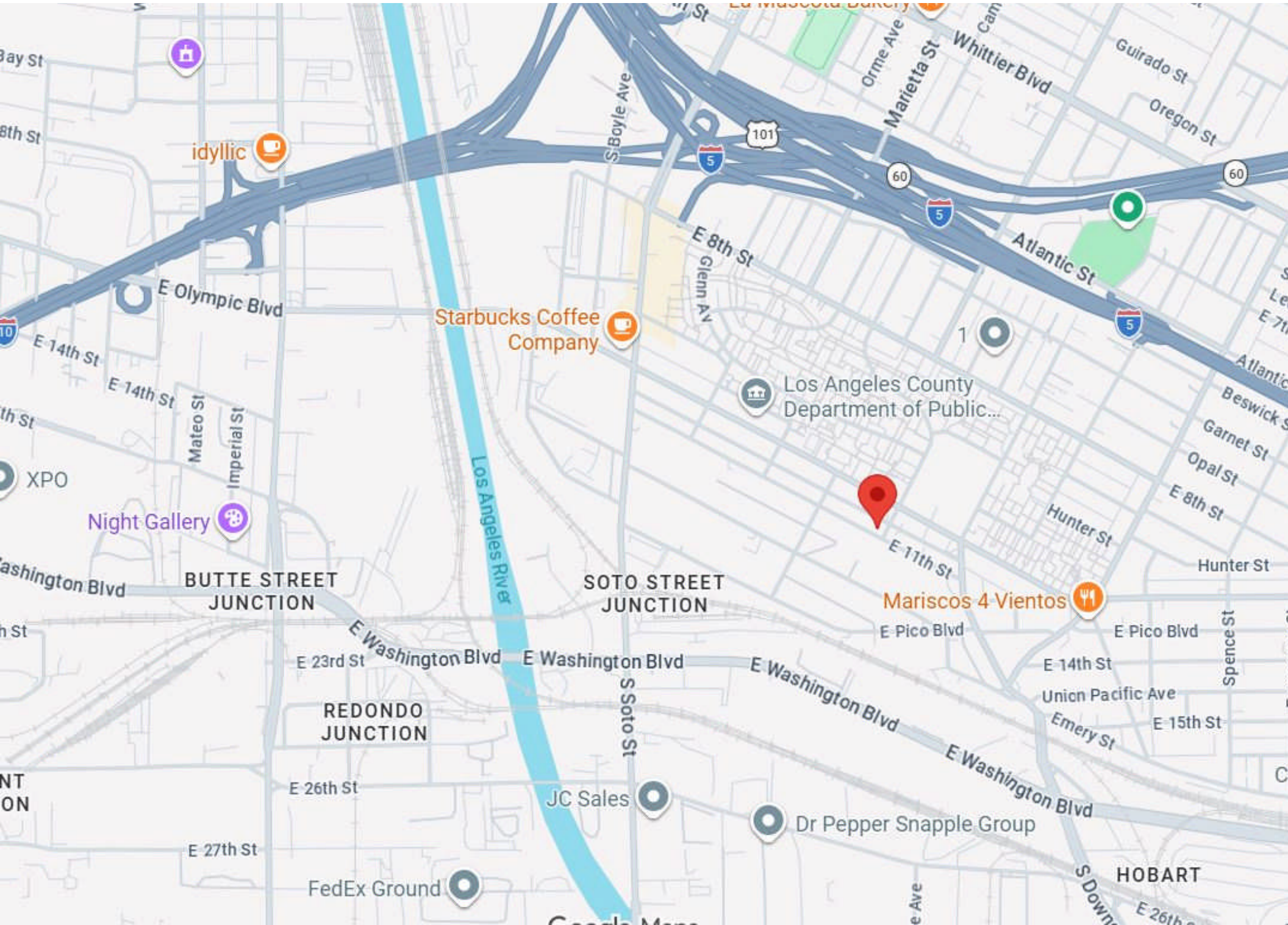
60

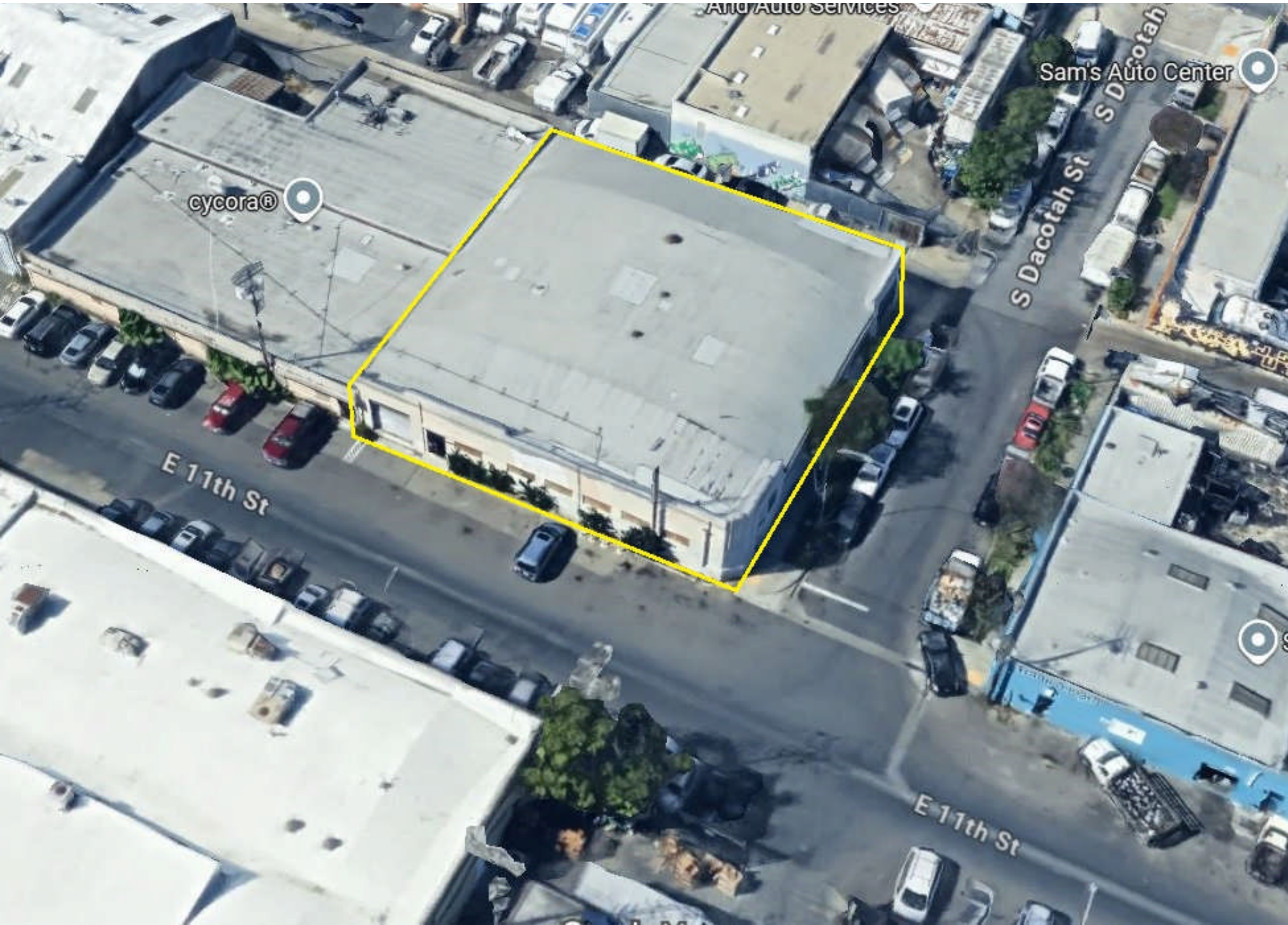
TRACT NO. 6783

M. B. 99-77-84

CODE 12704

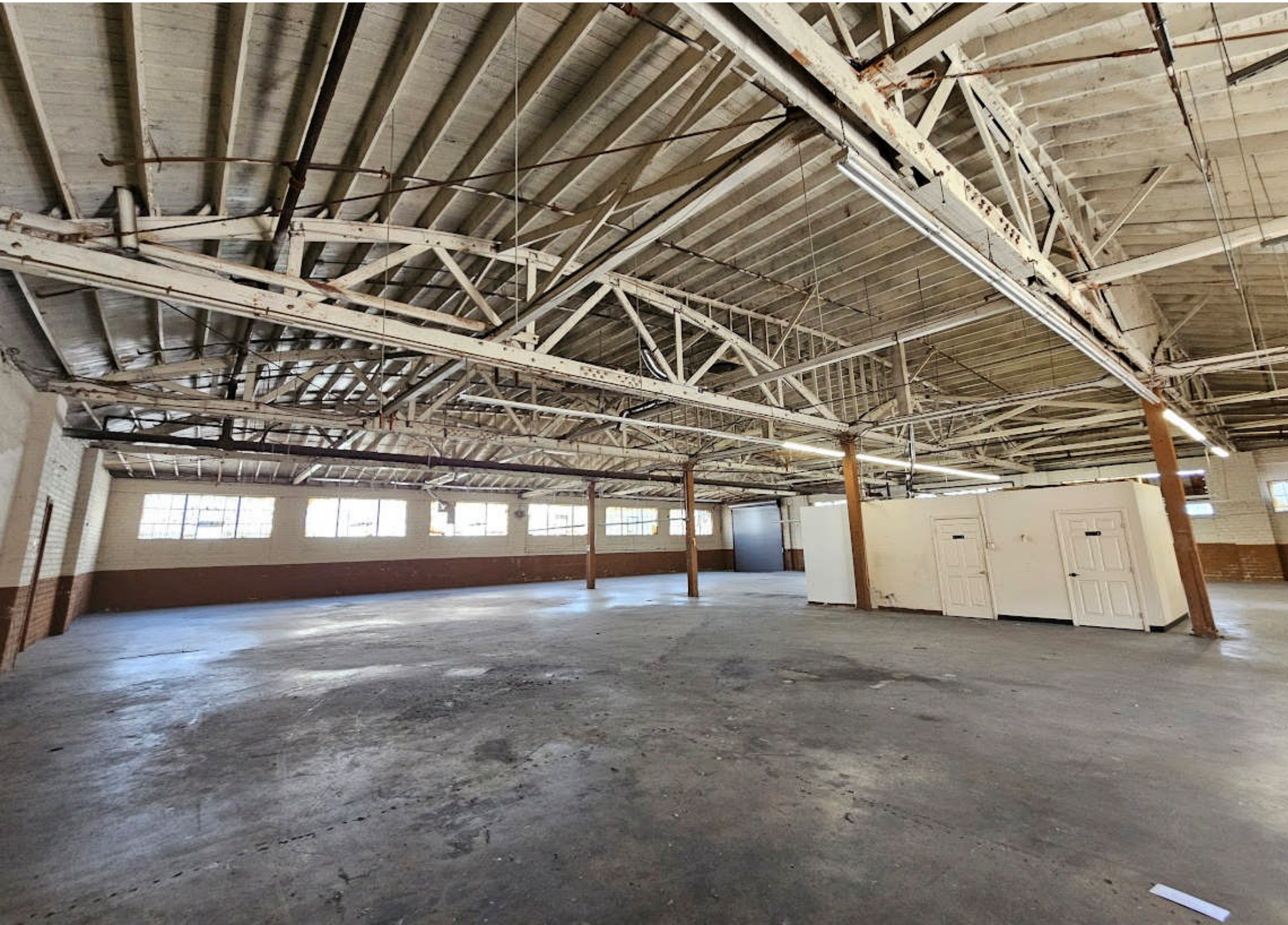






FOR LEASE | ±10,000 SF INDUSTRIAL BUILDING

3053 E 11TH ST



FOR LEASE | ±10,000 SF INDUSTRIAL BUILDING

3053 E 11TH ST



FOR LEASE | ±10,000 SF INDUSTRIAL BUILDING

3053 E 11TH ST



FOR LEASE | ±10,000 SF INDUSTRIAL BUILDING

3053 E 11TH ST







FOR LEASE | ±10,000 SF INDUSTRIAL BUILDING

3053 E 11TH ST

