



Keegan & Coppin
COMPANY, INC.

FOR LEASE

**6576 OAKMONT DRIVE
SANTA ROSA, CA**

OAKMONT OFFICE SPACE



Go beyond broker.

PRESENTED BY:

RHONDA DERINGER, PARTNER
LIC # 01206401 (707) 528-1400, EXT. 267
RDERINGER@KEEGANCOPPIN.COM



PROPERTY DETAILS

6576 Oakmont Drive is one of four sister buildings in the heart of the Oakmont community business district.

- Office space for Lease is 1,817+/- sf - Divisible
- Floor plan includes 4 private offices, cubicle areas and common restrooms
- Easy Direct Access from Hwy 12 Lighted Intersection
- On-Site Parking
- Street Signage
- Great Exposure

LEASE TERMS

Negotiable. Contact agent.



6576 OAKMONT DRIVE
SANTA ROSA, CA

**OAKMONT
OFFICE SPACE
FOR LEASE**



PRESENTED BY:

**RHONDA DERINGER, PARTNER
KEEGAN & COPPIN CO., INC.
LIC # 01206401 (707) 528-1400, EXT. 267
RDERINGER@KEEGANCOPPIN.COM**

Keegan & Coppin Company, Inc.

The above information, while not guaranteed, has been secured from sources we believe to be reliable. Submitted subject to error, change or withdrawal. An interested party should verify the status of the property and the information herein.

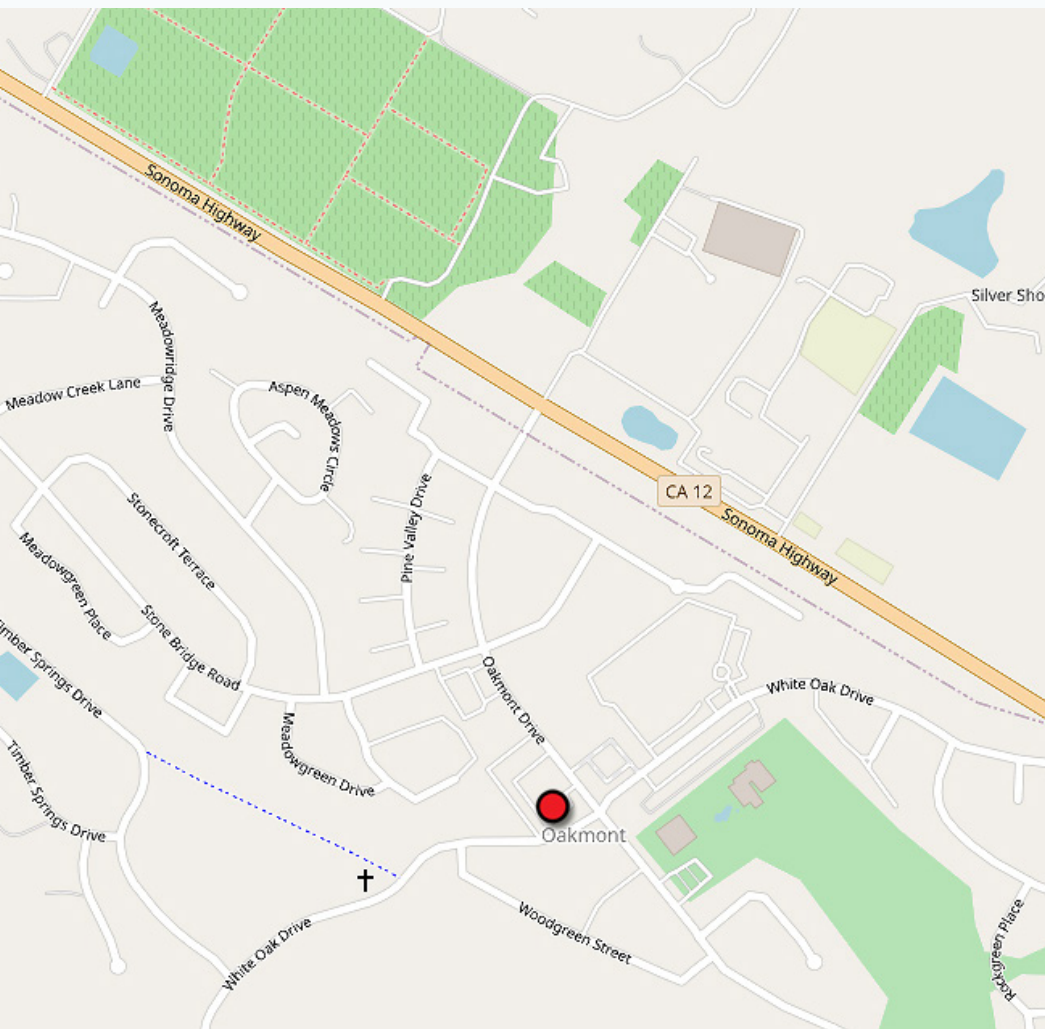


PROPERTY DETAILS



6576 OAKMONT DRIVE
SANTA ROSA, CA

OAKMONT OFFICE SPACE FOR LEASE



BUILDING SIZE
4,345+/- SF

LOT SIZE
7,405+/- SF

APN
016-040-064

YEAR BUILT
1999

ZONING
Planned Development

TOTAL BUILDING SF
4,345+/- SF

STORIES
One

PARKING
5:1,000

HVAC
Yes: 2 Units. One for each unit separately metered.

PRESENTED BY:

RHONDA DERINGER, PARTNER
KEEGAN & COPPIN CO., INC.
LIC # 01206401 (707) 528-1400, EXT. 267
RDERINGER@KEEGANCOPPIN.COM

Keegan & Coppin Company, Inc.

The above information, while not guaranteed, has been secured from sources we believe to be reliable. Submitted subject to error, change or withdrawal. An interested party should verify the status of the property and the information herein.



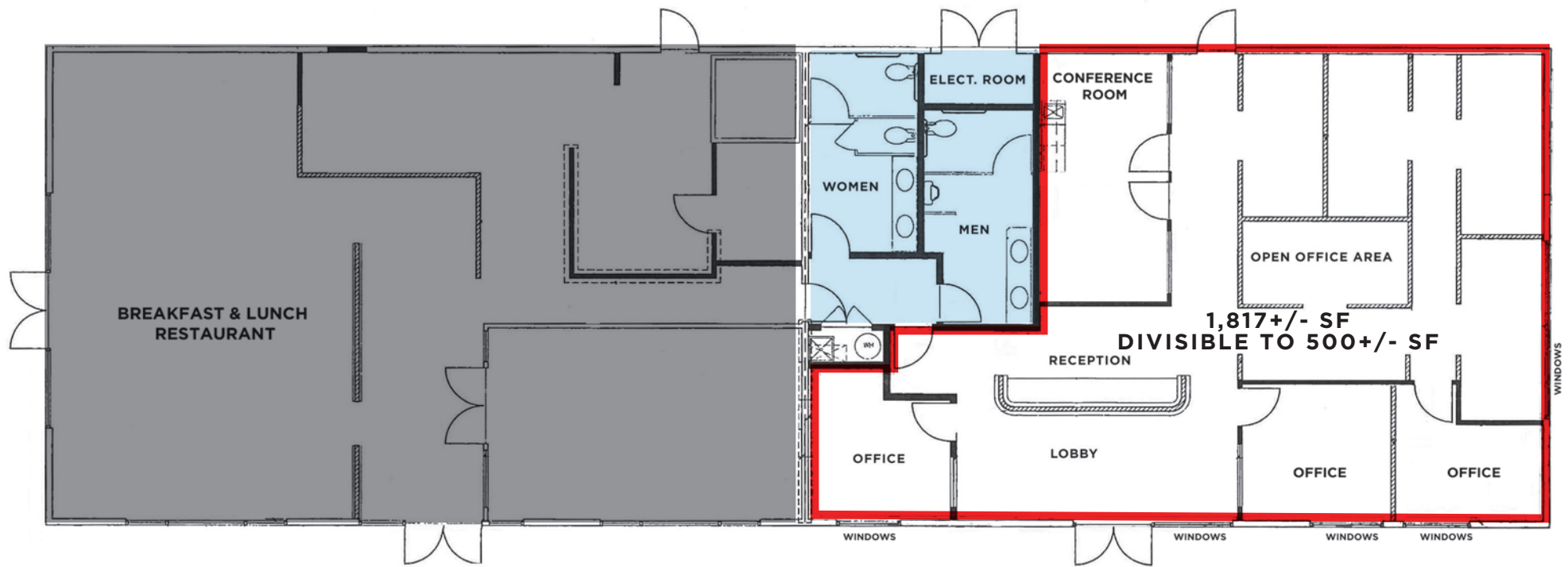
FLOOR PLAN



6576 OAKMONT DRIVE
SANTA ROSA, CA

**OAKMONT
OFFICE SPACE
FOR LEASE**

1,817+/- SF OFFICE FOR LEASE



- AVAILABLE
- COMMON AREA R/R
- NOT AVAILABLE

PRESENTED BY:

RHONDA DERINGER, PARTNER
KEEGAN & COPPIN CO., INC.
LIC # 01206401 (707) 528-1400, EXT. 267
RDERINGER@KEEGANCOPPIN.COM

Keegan & Coppin Company, Inc.

The above information, while not guaranteed, has been secured from sources we believe to be reliable. Submitted subject to error, change or withdrawal. An interested party should verify the status of the property and the information herein.



PROPERTY VICINITY



6576 OAKMONT DRIVE
SANTA ROSA, CA

**OAKMONT
OFFICE SPACE
FOR LEASE**

DESCRIPTION OF AREA

Oakmont Business Center of the Oakmont Active Senior Community in Valley of the Moon, Santa Rosa, CA

NEARBY AMENITIES

- 3 Banks
- Oakmont 18-Hole Golfing
- Club Room Facilities

TRANSPORTATION ACCESS

- County Transit Bus



PRESENTED BY:

**RHONDA DERINGER, PARTNER
KEEGAN & COPPIN CO., INC.
LIC # 01206401 (707) 528-1400, EXT. 267
RDERINGER@KEEGANCOPPIN.COM**

Keegan & Coppin Company, Inc.

The above information, while not guaranteed, has been secured from sources we believe to be reliable. Submitted subject to error, change or withdrawal. An interested party should verify the status of the property and the information herein.



VICINITY AERIAL



6576 OAKMONT DRIVE
SANTA ROSA, CA

**OAKMONT
OFFICE SPACE
FOR LEASE**



Keegan & Coppin Co., Inc.
1355 N Dutton Ave.
Santa Rosa, CA 95401
www.keegancoppin.com
(707) 528-1400

The above information, while not guaranteed, has been secured from sources we believe to be reliable. Submitted subject to error, change or withdrawal. An interested party should verify the status of the property and the information herein.

PRESENTED BY:

RHONDA DERINGER, PARTNER
LIC # 01206401 (707) 528-1400, EXT. 267
RDERINGER@KEEGANCOPPIN.COM