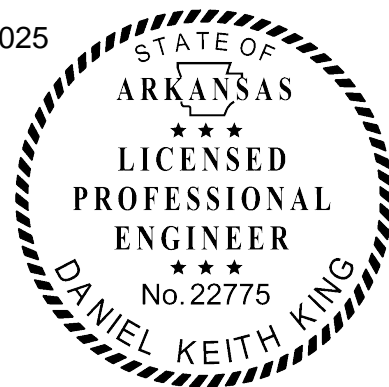
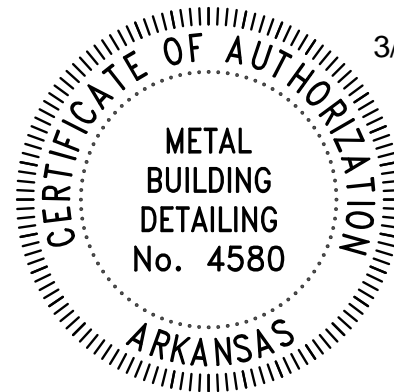
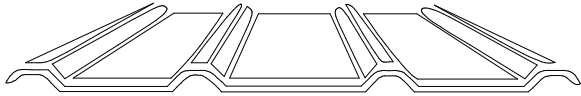


Metal Roofing Supply

Daniel King

3/18/2025





METAL ROOFING SUPPLY

4061 Highway 157 Steprock, AR 72081
(501) 728-2122 www.metalroofingsupply.org

BUILDING LOADS / DESCRIPTION:

WIDTH: 50 LENGTH: 140 HEIGHT: 16 / 16
(BUILDING DIMENSIONS ARE NOMINAL. REFER TO PLANS).

THIS STRUCTURE IS DESIGNED UTILIZING THE LOADS INDICATED
AND APPLIED AS REQUIRED BY: IBC 21

THE CONTRACTOR IS TO CONFIRM THAT THESE LOADS COMPLY
WITH THE REQUIREMENTS OF THE LOCAL BUILDING DEPARTMENT.

ROOF DEAD LOAD: 2.20 PSF (ROOF PANELS & PURLINS)

COLLATERAL LOAD: 2.20 PSF

ROOF LIVE LOAD: 20.00 PSF

ROOF SNOW LOAD: 10.50 PSF

BASIC WIND SPEED: 115 MPH

SEISMIC ZONE: C

WIND EXPOSURE: C

IMPORTANCE FACTORS:

WIND LOAD: 1.00
SNOW LOAD 1.0000
SEISMIC LOAD 1.00

GENERAL NOTES:

1) MATERIALS : MINIMUM YIELD:
HOT ROLLED BAR Fy = 50.0000 ksi MIN.
STRUCTURAL STEEL SHEET Fy = 50.0000 ksi MIN.
STRUCTURAL STEEL PLATE Fy = 50.0000 ksi MIN.
COLD FORMED SHAPES Fy = 57.0000 ksi MIN.
WALL SHEETING Fy = 60.0000 ksi MIN.
ROOF SHEETING Fy = 50.0000 ksi MIN.
BOLTS A307 & A325

THE METAL BUILDING MANUFACTURER RESERVES THE RIGHT TO
SUBSTITUTE THE ABOVE MATERIALS WITH EQUAL OR BETTER MATERIAL.

2) BOLT TIGHTENING REQUIREMENTS:

ALL HIGH STRENGTH BOLTS ARE A325 UNLESS NOTED OTHERWISE.
HIGH STRENGTH BOLTS SHALL BE TIGHTENED BY THE TURN OF THE NUT METHOD
IN ACCORDANCE WITH THE LATEST EDITION AISC "SPECIFICATION FOR
STRUCTURAL JOINTS USING ASTM A325 OR A490 BOLTS". A325 BOLTS SHALL BE
INSTALLED WITH OUT WASHERS WHEN TIGHTENED BY THE "TURN OF THE NUT"
METHOD. ALL BOLTED CONNECTIONS, FOR SHEAR/BEARING CONNECTION TYPE
WITH BOLT THREADS EXCLUDED FROM THE SHEAR PLANE SHALL BE SNUG TIGHT
ONLY.

3) ALL STRUCTUAL STEEL TO RECEIVE A RUST INHIBITIVE PRIMER. THIS PAINT IS NOT INTENDED FOR LONG TERM EXPOSURE TO THE ELEMENTS.

ROOF PANELS:

COLOR: NEED SIG 200

WALL PANELS:

COLOR: NEED SIG 200

TRIM COLORS:

CABLE: NEED SIG 200

CORNER: NEED SIG 200

EAVE: NEED SIG 200

FRAMED OPENINGS: NEED SIG 200

LINER PANELS:

COLOR: N/A

LINER TRIM:

COLOR: N/A

DEFLECTION LIMITS:

EW COL: 180
EW RAF LIVE: 180
EW RAF WIND: 180
WALL GIRT: 90
PURL LIVE: 180
PURL WIND: 150
WALL PANEL: 60
ROOF PANEL LIVE: 60
ROOF PANEL WIND: 60
RF HORIZONTAL: 60
RF VERTICAL: 180
WIND BENT: 60
RF CRANE: 100
RF SEIS: 50
WIND BENT SEIS: 50

BUILDER / CONTRACTOR RESPONSIBILITIES

IT IS THE RESPONSIBILITY OF THE BUILDER/CONTRACTOR TO INSURE THAT ALL PROJECT PLANS AND SPECIFICATIONS
COMPLY WITH THE APPLICABLE REQUIREMENTS OF ANY GOVERNING BUILDING AUTHORITIES. THE SUPPLYING OF SEALED
ENGINEERING DATA AND DRAWINGS FOR THE METAL BUILDING SYSTEM DOES NOT IMPLY OR CONSTITUTE AN AGREEMENT
THAT THE METAL BUILDING SYSTEM MANUFACTURER OR ITS DESIGN ENGINEER IS ACTING AS THE ENGINEER OF RECORD
OR DESIGN PROFESSIONAL FOR A CONSTRUCTION PROJECT.

THE CONTRACTOR MUST SECURE ALL REQUIRED APPROVALS AND PERMITS FROM THE APPROPRIATE AGENCY AS REQUIRED.

APPROVAL OF THE METAL BUILDING SYSTEM MANUFACTURER'S DRAWINGS AND CALCULATIONS INDICATE THAT THE
METAL BUILDING SYSTEM MANUFACTURER CORRECTLY INTERPRETED AND APPLIED THE REQUIREMENTS OF THE CONTRACT
DRAWINGS AND SPECIFICATIONS. (SECT. 4.2.1 AISC CODE OF STANDARD PRACTICES, 9TH ED.)

WHERE DISCREPANCIES EXIST BETWEEN THE METAL BUILDING SYSTEM MANUFACTURER'S STRUCTURAL STEEL PLANS AND
THE PLANS FOR OTHER TRADES, THE STRUCTURAL STEEL PLANS SHALL GOVERN. (SECT. 3.3 AISC CODE OF STANDARD
PRACTICE 9TH ED.)

DESIGN CONSIDERATIONS OF ANY MATERIALS IN THE STRUCTURE WHICH ARE NOT FURNISHED BY THE METAL BUILDING
SYSTEM MANUFACTURER ARE THE RESPONSIBILITY OF THE CONTRACTORS AND ENGINEERS OTHER THAN THE METAL
BUILDING SYSTEM MANUFACTURER'S ENGINEER UNLESS SPECIFICALLY INDICATED.

THE CONTRACTOR IS RESPONSIBLE FOR ALL ERECTION OF STEEL AND ASSOCIATED WORK IN COMPLIANCE WITH THE
METAL BUILDING SYSTEM MANUFACTURER "FOR CONSTRUCTION" DRAWINGS.

ALL BRACING AS SHOWN AND PROVIDED BY THE METAL BUILDING SYSTEM MANUFACTURER FOR THIS BUILDING IS
REQUIRED AND SHALL BE INSTALLED BY THE ERECTOR AS A PERMANENT PART OF THE STRUCTURE.

TEMPORARY SUPPORTS, SUCH AS TEMPORARY GUYS, BRACES, FALSE WORK, CRIBBING OR OTHER ELEMENTS REQUIRED FOR
THE ERECTION OPERATION WILL BE DETERMINED AND FURNISHED AND INSTALLED BY THE ERECTOR. THESE TEMPORARY
SUPPORTS WILL SECURE THE STEEL FRAMING, OR ANY PARTLY ASSEMBLED STEEL FRAMING, AGAINST LOADS COMPARABLE
IN INTENSITY TO THOSE FOR WHICH THE STRUCTURE WAS DESIGNED, RESULTING FROM WIND, SEISMIC FORCES AND
ERECTION OPERATIONS, BUT NOT THE LOADS RESULTING FROM THE PERFORMANCE OF WORK BY OR THE ACTS OF OTHERS,
NOR SUCH UNPREDICTABLE LOADS AS THOSE DUE TO TORNADO, EXPLOSION, OR COLLISION. (SECT. 7.9.1 AISC CODE OF
STANDARD PRACTICE, 9TH ED.)

WARNING: IN NO CASE SHOULD GALVALUME STEEL PANELS BE USED IN CONJUNCTION WITH LEAD OR COPPER. BOTH LEAD
AND COPPER HAVE HARMFUL CORROSION EFFECTS ON THE ALUMINUM ZINC ALLOY COATING WHEN THEY ARE USED IN
CONTACT WITH GALVALUME STEEL PANELS. EVEN RUN-OFF FROM COPPER FLASHING, WIRING, OR TUBING ONTO GALVALUME
SHOULD BE AVOIDED.

APPROVAL NOTES

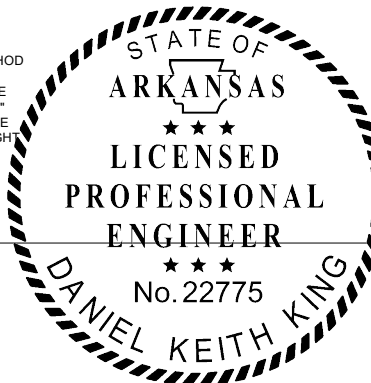
THE FOLLOWING CONDITIONS APPLY IN THE EVENT THAT THESE DRAWINGS ARE USED AS APPROVAL DRAWINGS:
IT IS IMPERATIVE THAT ANY CHANGES TO THESE DRAWINGS BE MADE IN CONTRASTING INK (PREFERABLY RED INK),
HAVE ALL INSTANCES OF CHANGE CLEARLY INDICATED, AND BE LEGIBLE AND UNAMBIGUOUS.

A SIGNATURE AND DATE IS REQUIRED ON ALL PAGES.

MANUFACTURER RESERVES THE RIGHT TO RE-SUBMIT DRAWINGS WITH EXTENSIVE OR COMPLEX CHANGES REQUIRED TO
AVOID MISFABRICATION. THIS MAY IMPACT THE DELIVERY SCHEDULE.

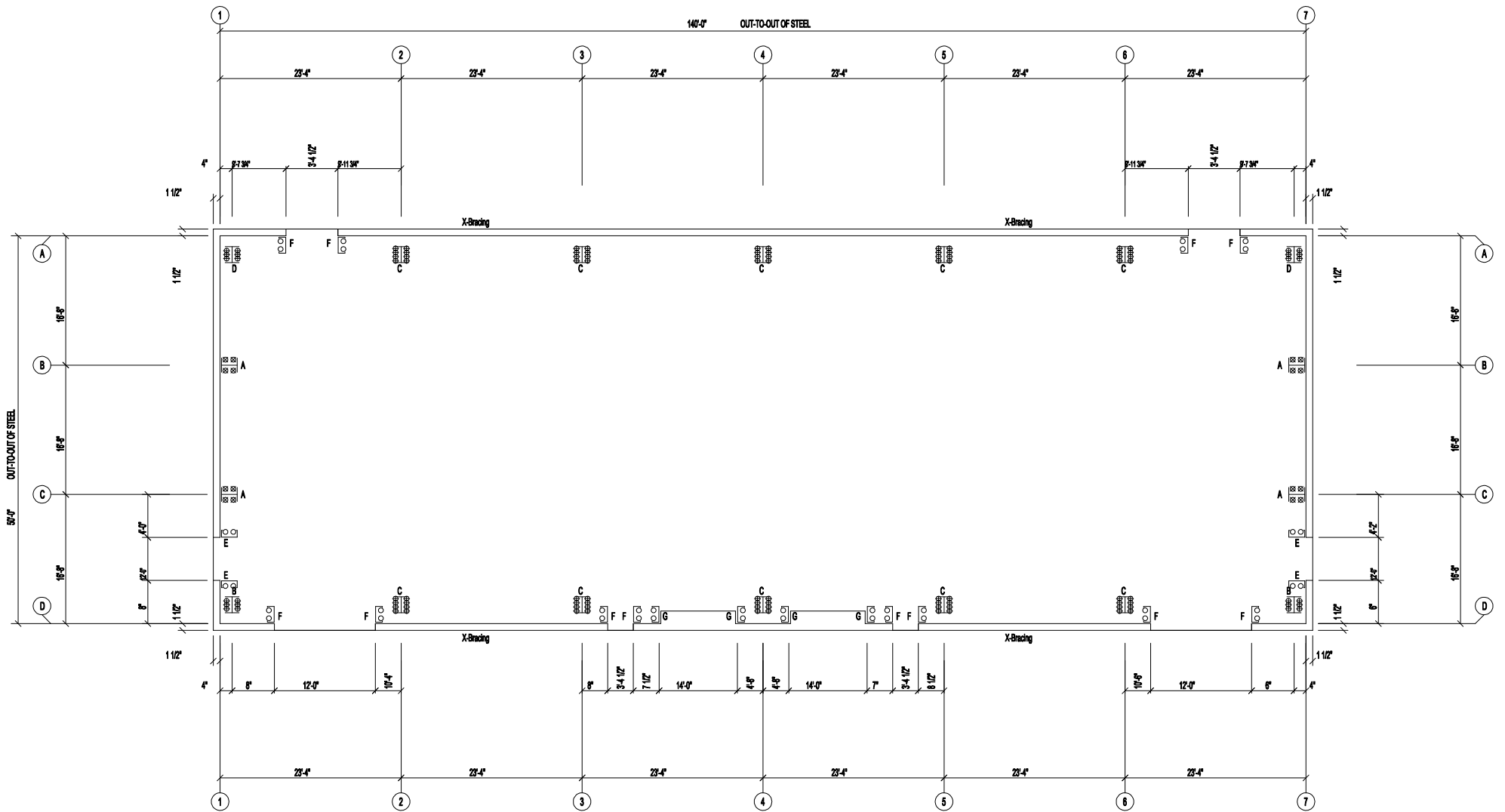
APPROVAL OF THESE DRAWINGS INDICATES CONCLUSIVELY THAT THE METAL BUILDING SYSTEM MANUFACTURER HAS
CORRECTLY INTERPRETED THE CONTRACT REQUIREMENTS, AND FURTHER CONSTITUTES AGREEMENT THAT THE BUILDING AS
DRAWN WITH INDICATED CHANGES REPRESENTS THE TOTAL OF THE MATERIALS TO BE SUPPLIED BY MANUFACTURER.
ANY CHANGES NOTED ON THE DRAWINGS NOT IN CONFORMANCE WITH THE TERMS AND REQUIREMENTS OF THE CONTRACT
BETWEEN MANUFACTURER AND ITS CUSTOMER ARE NOT BINDING ON MANUFACTURER UNLESS SUBSEQUENTLY SPECIFICALLY
ACKNOWLEDGED AND AGREED TO IN WRITING BY CHANGE ORDER OR SEPARATE DOCUMENTATION. MANUFACTURER
RECOGNIZES THAT RUBBER STAMPS ARE ROUTINELY USED FOR INDICATING APPROVAL, DISAPPROVAL, REJECTION, OR
MERE REVIEW OF THE DRAWINGS SUBMITTED. HOWEVER, MANUFACTURER DOES NOT ACCEPT CHANGES OR ADDITIONS TO
CONTRACTUAL TERMS AND CONDITIONS THAT MAY APPEAR WITH USE OF A STAMP OR SIMILAR INDICATION OF
APPROVAL, DISAPPROVAL, ETC. SUCH LANGUAGE APPLIED TO MANUFACTURER'S DRAWINGS BY THE CUSTOMER, ARCHITECT,
ENGINEER, OR ANY OTHER PARTY WILL BE CONSIDERED AS UNACCEPTABLE ALTERNATIONS TO THESE DRAWING NOTES, AND
WILL NOT ALTER THE CONTRACTUAL RIGHTS AND OBLIGATIONS EXISTING BETWEEN MANUFACTURER AND ITS CUSTOMER.

**IMPORTANT NOTE: FINAL DETAILING, FABRICATION, AND DELIVERY DATE OF THIS PROJECT
CANNOT BE COMPLETED UNTIL THE SIGNED APPROVALS ARE RETURNED TO THE METAL
BUILDING MANUFACTURER.**



△			
△			
△			
△			
B	J.J.	FOR CONSTRUCTION	
A	J.J.	FOR APPROVAL	
REV	DATE	REVISION	

PURCHASER:	DLR
PROJECT:	Matt Ahart
JOB NUMBER:	Matt_Ahart_1_23_25

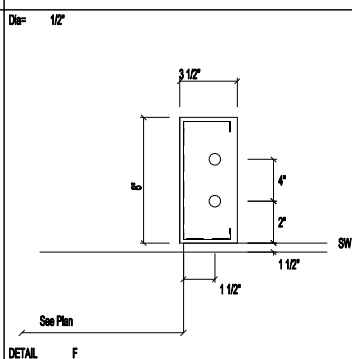
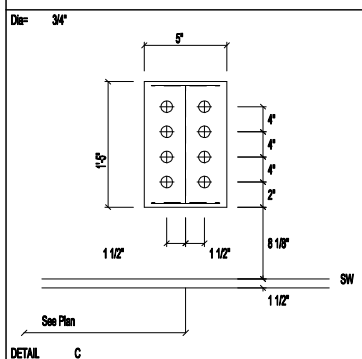
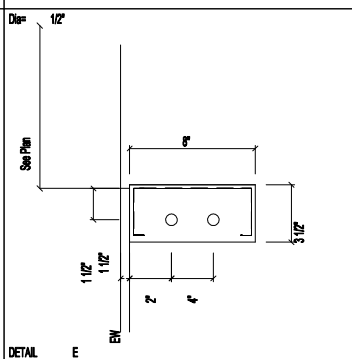
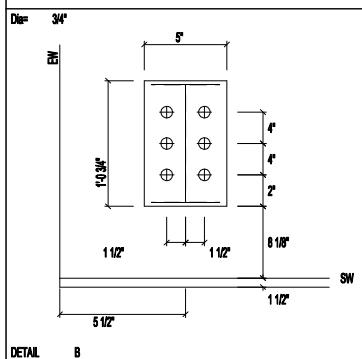
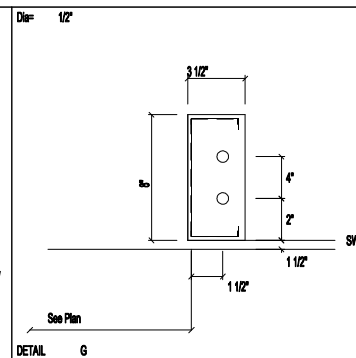
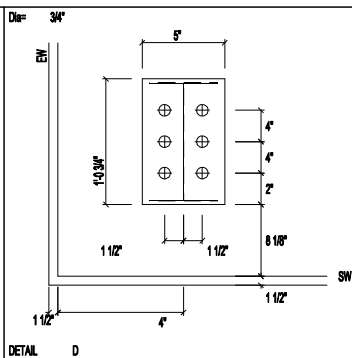
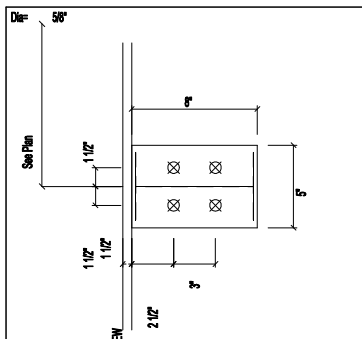


ANCHOR BOLT PLAN
NOTE: All Base Plates @ 100'-0" (U.N.)

Daniel King
3/18/2025



DESCRIPTION: ANCHOR BOLT PLAN						
CUSTOMER: DLR				PROJECT: Matt Ahart		
LOCATION:						
DRN. BY AW	CKD BY AW	DATE 3/13/25	SCALE N.T.S.	REV. 00	QUOTATION NO. Matt Ahart 1 23 25	SHEET NO. OF



Daniel King

3/18/2025



4061 Highway 157 Steprock, AR 72081
(501) 728-2122 www.metalroofingsupply.org

DESCRIPTION: ANCHOR BOLT DETAILS									
CUSTOMER: DLR					PROJECT: Matt Hart				
LOCATION:									
DRN. BY AW	CKD BY	DATE 3/13/25	SCALE N.T.S.	REV. 00	QUOTATION NO. Matt Hart 1 23 25			SHEET NO. OF	

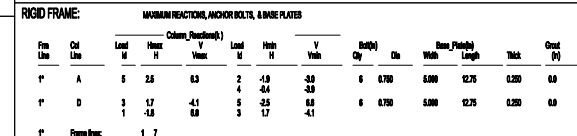
[illegible]

1. All loading conditions are examined and only maximum/minimum H or V and the corresponding H or V are reported.
2. Positive reactions are as shown in the sketch. Foundation loads are in opposite directions.
3. Bending reactions are in the plane of the beam with the H pointing away from the beam top. The vertical reaction is downward.

[illegible]

5. Loading conditions are:
- | | |
|---|---------------------------------------|
| 1 | Dead+Collared+Snow+Snow_Drift |
| 2 | 0.6Dead+0.9Wind_Left |
| 3 | 0.6Dead+0.9Wind_Right |
| 4 | 0.6Dead+0.9Wind_LongIR |
| 5 | Dead+Collared+MR_SNOW |
| 6 | 0.6Dead+0.9Wind_Right+0.9Wind_Suction |
| 7 | 0.6Dead+0.9Wind_Pressure+0.9Wind_Long |
| 8 | Dead+0.9Wind_Right+0.9Wind_Suction |

Reactions for seismic represent shear force, E
Reaction values shown are unfactored



RIGID FRAME:		MEMBRANE REACTION, ANCHOR BOLTS, & BONE PLATES												
File Name	Cut Line	Columns (Reactions)						V	Dy(D)	Dx	Ecc. (Feet)	Length	Thick	Grout (%)
		Load	Heath	Heath	Heath	Heath	Heath							
2"	A	5	5.7	12.0	2	-4.8	-4.1	0	0.700		5.000	17.00	0.250	0.0
2"	D	3	3.0	-4.8	5	5.7	12.0	4.8	0	0.700	5.000	17.00	0.250	0.0
2"	Frame Base:	5	-5.7	12.2	3	3.0								

RIGID FRAME		BASIC COLUMN REACTION (t)											
Frame	Column	—Dist—	—Colhead—	—L—	—R—	—Dist—	—Dist—	—Dist—	—Dist—	—Dist—	—Dist—	—Dist—	—Dist—
1*	Line	Var	Var	Var	Var	Var	Var	Var	Var	Var	Var	Var	Var
1*	A	0.4	1.2	0.3	0.7	1.4	3.5	1.2	3.1	-0.1	0.0	0.0	0.0
1*	B	4.0	1.3	0.3	0.9	-1.0	4.0	-4.2	3.9	0.1	0.0	0.0	0.1
Frame	Column	—Wind Left—	—Wind Right—	—Wind Left—	—Wind Right—	—Wind Left—	—Wind Right—	—Wind Left—	—Wind Right—	—Wind Left—	—Wind Right—	—Wind Left—	—Wind Right—
1*	Line	Var	Var	Var	Var	Var	Var	Var	Var	Var	Var	Var	Var
1*	A	-3.5	-4.1	0.2	-3.8	-3.4	-3.0	0.3	-1.5	-1.0	-7.9	-1.0	-4.1
1*	B	0.1	-4.6	3.3	-3.7	-0.7	-2.1	3.1	-0.7	1.8	-1.6	1.0	-7.8
Frame	Column	—Seismic Left	—Seismic Right	—Seismic Left	—Seismic Right	—Seismic Left	—Seismic Right	—Seismic Left	—Seismic Right	—Seismic Left	—Seismic Right	—Seismic Left	—Seismic Right
1*	Line	Var	Var	Var	Var	Var	Var	Var	Var	Var	Var	Var	Var
1*	A	-4.2	-4.1	0.1	-4.1	1.9	4.4	1.1	3.1	1.1	1.9		
1*	B	0.1	0.1	0.2	-0.1	-1.9	-4.4	-1.1	1.8	-1.1	3.1		
Frame	Column	—Dist—	—Colhead—	—L—	—R—	—Dist—	—Dist—	—Dist—	—Dist—	—Dist—	—Dist—	—Dist—	—Dist—
2*	Line	Var	Var	Var	Var	Var	Var	Var	Var	Var	Var	Var	Var
2*	A	0.0	1.9	0.0	1.3	3.3	0.0	2.9	0.1	-0.1	0.0	0.0	0.0
2*	B	4.0	2.1	-4.0	1.4	-3.3	0.0	-2.9	0.0	0.1	0.0	0.0	0.1
Frame	Column	—Wind Left—	—Wind Right—	—Wind Left—	—Wind Right—	—Wind Left—	—Wind Right—	—Wind Left—	—Wind Right—	—Wind Left—	—Wind Right—	—Wind Left—	—Wind Right—
2*	Line	Var	Var	Var	Var	Var	Var	Var	Var	Var	Var	Var	Var
2*	A	-7.4	-9.9	-0.6	-7.9	-4.9	-7.9	-0.1	-2.9	-1.3	-11.9	-2.1	-10.1
2*	B	0.0	0.4	1.2	-13.7	0.1	-0.4	0.7	-0.7	2.1	-10.3	1.3	-12.1
Frame	Column	—Seismic Left	—Seismic Right	—Seismic Left	—Seismic Right	—Seismic Left	—Seismic Right	—Seismic Left	—Seismic Right	—Seismic Left	—Seismic Right	—Seismic Left	—Seismic Right
2*	Line	Var	Var	Var	Var	Var	Var	Var	Var	Var	Var	Var	Var
2*	A	-4.2	-4.1	0.2	-4.1	0.0	-0.4	0.0	0.4	4.3	0.8	2.8	0.1
2*	B	4.2	4.1	0.2	-4.1	0.0	-0.4	0.0	0.4	-4.3	0.8	-2.8	3.8
Frame	Column	—F2R2_R_L											
2*	Line	Var	Var	Var	Var	Var	Var	Var	Var	Var	Var	Var	Var
2*	A	2.8	3.8										
2*	B	-2.8	0.1										
1*	Frame Basic			1	7								
2*	Frame Basic			1	7	4	4	4	4				

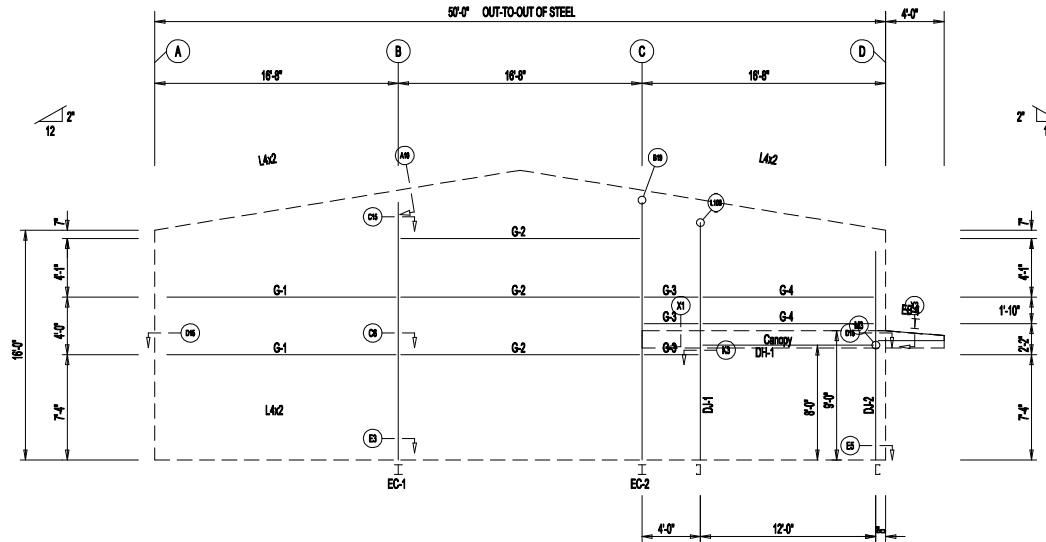
City	Locate	Dist (in)	Type	Total Lam (in)	Band Lam (in)	Proj (in)
○ 40	Jamb	12"	ASPT	3.75		1.50
⊗ 16	Endmill	50"	ASPT			2.50
⊕ 104	Frame	30"	ASPT		3.00	2.50

The seal is circular with a thick, black, dashed outer border. Inside the border, the text "STATE OF ARKANSAS" is at the top, with a small outline of the state of Arkansas below it. Three stars are positioned below the state outline. The words "LICENSED PROFESSIONAL ENGINEER" are written in large, bold, capital letters across the center. Below this, three more stars are placed above the license number "No. 22775". At the bottom of the seal, the name "DANIEL KEITH KING" is written in a curved path following the inner edge of the border.

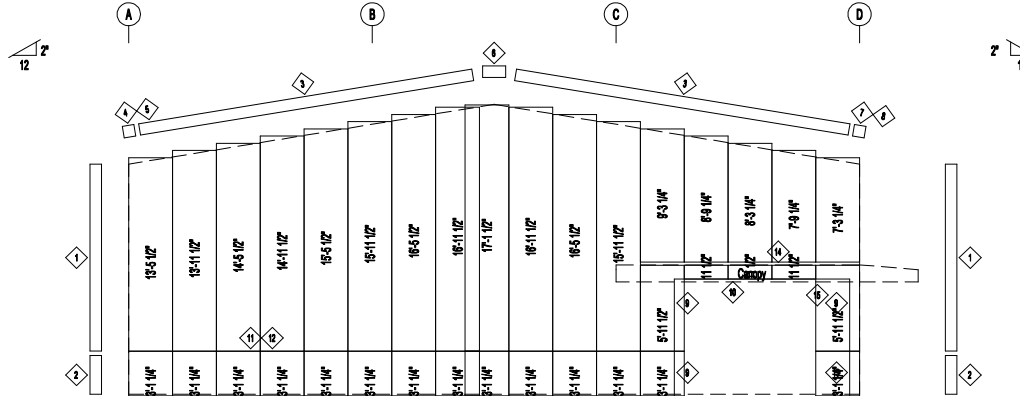


DRN. BY AW	CK'D BY AW	DATE 3/13/25	SCALE N.T.S.	REV. 00	QUOTATION NO. Matt Ahart 1 23 25
---------------	---------------	-----------------	-----------------	------------	-------------------------------------

SHEET NO.



ENDWALL FRAMING: FRAME LINE 1



ENDWALL SHEETING & TRIM: FRAME LINE 1

PANELS: 28 G& PR - NEED SIG 200

BOLT TABLE FRAME LINE 1				
LOCATION	QUAN	TYPE	DIA	LENGTH
Column/Rail	2	A325	5/8"	2"
Jamb	2	A325	1/2"	1 1/4"

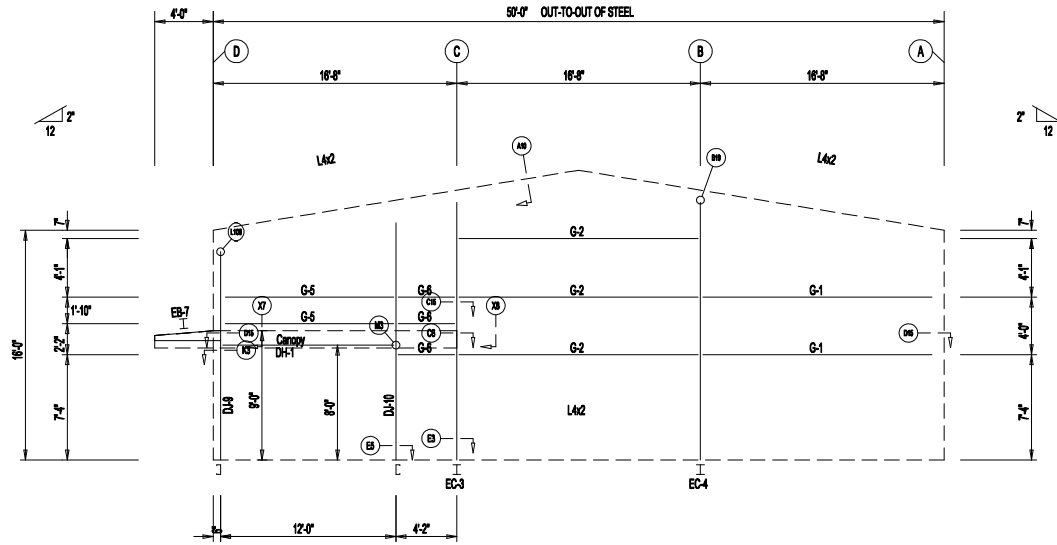
TRIM TABLE FRAME LINE 1			
ID	PART	LENGTH	DETAIL
1	FL32	14'-0"	TRIM_188
2	FL30	10'-2"	TRIM_188
3	FL18D	20'-2"	TRIM_229
4	FL18M	10'-2"	TRIM_229
5	FL18A	6"	
6	FL18B	1'-4"	
7	FL18M	10'-2"	
8	FL18A	6"	
9	FL22	7'-3"	TRIM_230
10	FL28B	12'-4"	TRIM_232
11	SPCL-06	10'-2"	TRIM_273
12	SPCL-06	SCRAP	TRIM_273
13	FL22	SCRAP	TRIM_230
14	FL18E	10'-2"	TRIM_309
15	FL28E	18'-4"	

MEMBER TABLE FRAME LINE 1		
MARK	PART	LENGTH
EB-4	BEAM	4'-0 7/8"
EC-1	8065c	17'-0 7/16"
EC-2	8065c	17'-0 7/16"
DJ-1	8X35C14	16'-4 7/16"
DJ-2	8X35C14	15'-3 1/8"
DN-1	8X25C16	12'-0"
G-1	8X25C16	14'-7 1/8"
G-2	8X25C16	16'-0"
G-3	8X25C16	3'-4 1/4"
G-4	8X25C16	10'-10 7/8"

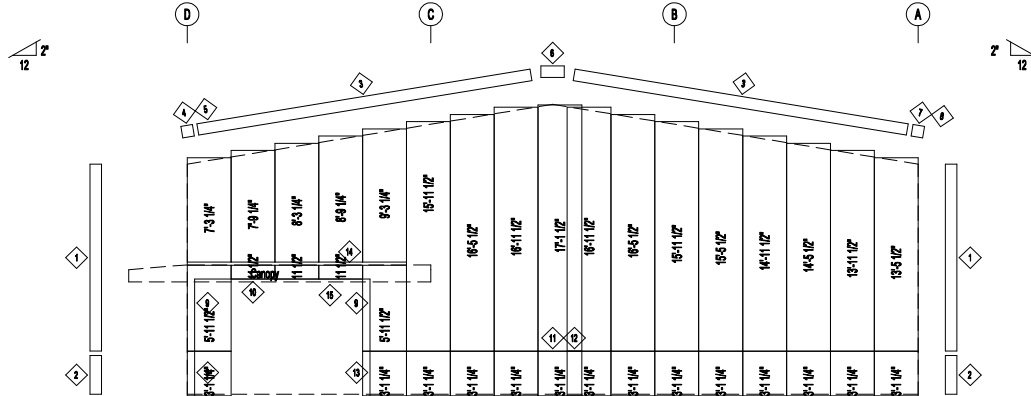
Daniel King
3/18/2025



DESCRIPTION: ENDWALL FRAMING							
CUSTOMER: DLR					PROJECT: Matt Ahart		
LOCATION:							
DRN. BY AW	CKD BY AW	DATE 3/13/25	SCALE N.T.S.	REV. 00	QUOTATION NO. Matt Ahart 1 23 25		SHEET NO. OF



ENDWALL FRAMING: FRAME LINE 7



ENDWALL SHEETING & TRIM: FRAME LINE 7

PANELS: 28 Ga. PR - NEED SIG 200

BOLT TABLE FRAME LINE 7				
LOCATION	QUAN	TYPE	DIA	LENGTH
Column/Rail Jamb	2	A325	5/8"	2"
	2	A325	1/2"	1 1/4"

TRIM TABLE FRAME LINE 7		
ID	PART	DETAIL
1	FL&2	TRIM_198
2	FL&3	TRIM_198
3	FL18D	TRIM_229
4	FL18M	
5	FL18A	
6	FL18B	
7	FL18M	
8	FL18A	
9	FL22	TRIM_230
10	FL28B	TRIM_232
11	SPCL-06	TRIM_273
12	SPCL-06	TRIM_273
13	FL22	TRIM_230
14	FL18S	TRIM_309
15	FL28E	

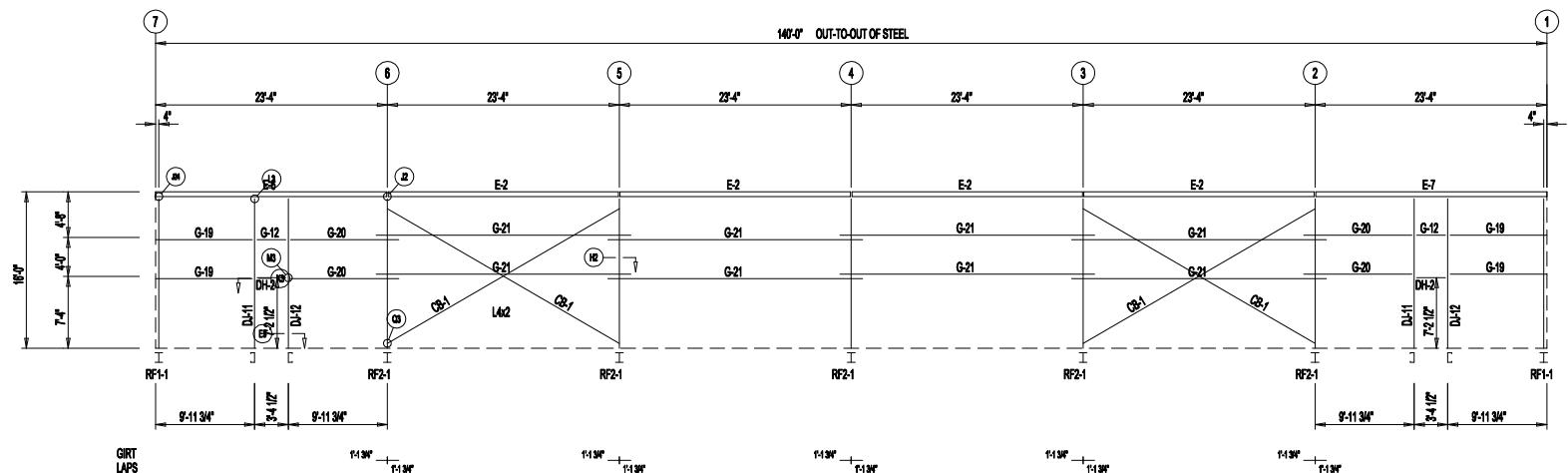
MEMBER TABLE FRAME LINE 7		
MARK	PART	LENGTH
EB-7	BEAM	4'-0 7/8"
EC-3	806se	17'-0 7/16"
EC-4	806se	17'-0 7/16"
DJ-9	8X35x14	15'-2 3/4"
DJ-10	8X35x14	16'-4 1/8"
DN-1	8X25x16	12'-0"
G-1	8X25x16	14'-7 1/8"
G-2	8X25x16	16'-0"
G-5	8X25x16	10'-8 7/8"
G-6	8X25x16	3'-6 1/4"

Daniel King
3/18/2025

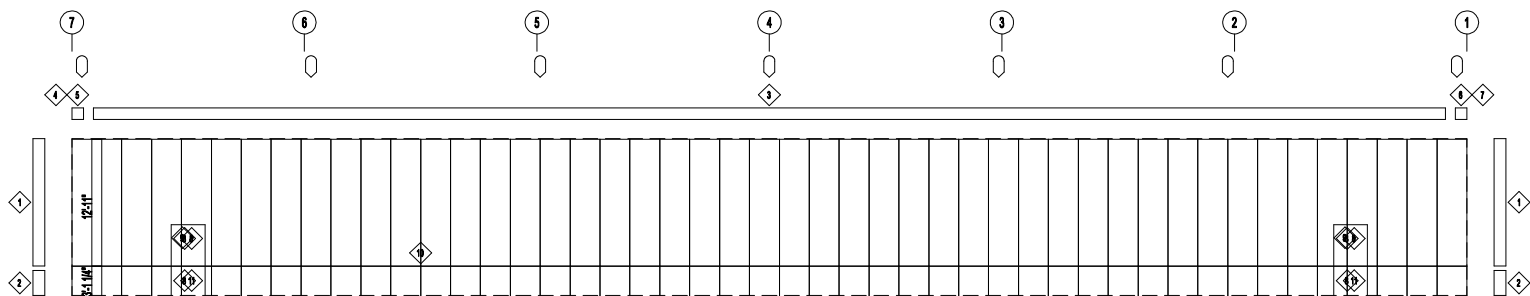


DESCRIPTION: ENDWALL FRAMING							
CUSTOMER: DLR				PROJECT: Matt Ahart			
LOCATION:							
DRN. BY AW	CKD BY AW	DATE 3/13/25	SCALE N.T.S.	REV. 00	QUOTATION NO. Matt Ahart 1 23 25		SHEET NO. OF

DOWNSPOUT LOCATIONS



SIDEWALL FRAMING: FRAME LINE A



SIDEWALL SHEETING & TRIM: FRAME LINE A

PANELS: 26 Ga. PR - NEED SIG 200

TRIM TABLE			
FRAME LINE A			
ID	PART	LENGTH	DETAIL
1	FLB32	14'-0"	TRIM_198
2	FLA30	10'-2"	
3	FL18B	20'-2"	
4	FL18M	10'-2"	
5	FL18A	8"	TRIM_239
6	FL18M	10'-2"	
7	FL18A	8"	
8	FL22	7'-3"	
9	FL25	7'-1"	TRIM_232
10	SPCL-06	10'-2"	TRIM_273
11	FL22	SCRAP	TRIM_239

MEMBER TABLE		
FRAME LINE A		
MARK	PART	LENGTH
DJ-11	8X36S14	15'-5 1/4"
DJ-12	8X36S14	15'-5 1/4"
DH-2	8X26S16	3'-4 1/2"
E-2	E08S342L	23'-3 1/2"
E-6	E08S342L	23'-3 1/2"
E-7	E08S342L	23'-3 1/2"
G-12	8X25Z16	3'-4"
G-19	8X25Z16	9'-7 3/4"
G-20	8X25Z16	10'-9 3/4"
G-21	8X25Z16	25'-7 1/2"
CB-1	BR12	28'-0"

Daniel King

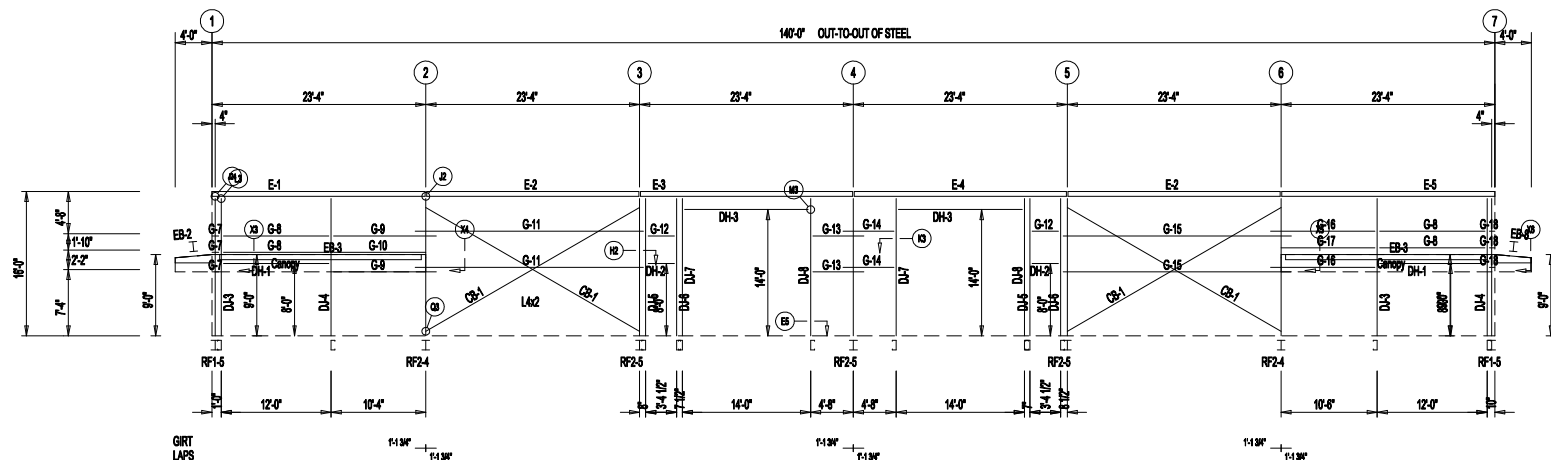
3/18/2025



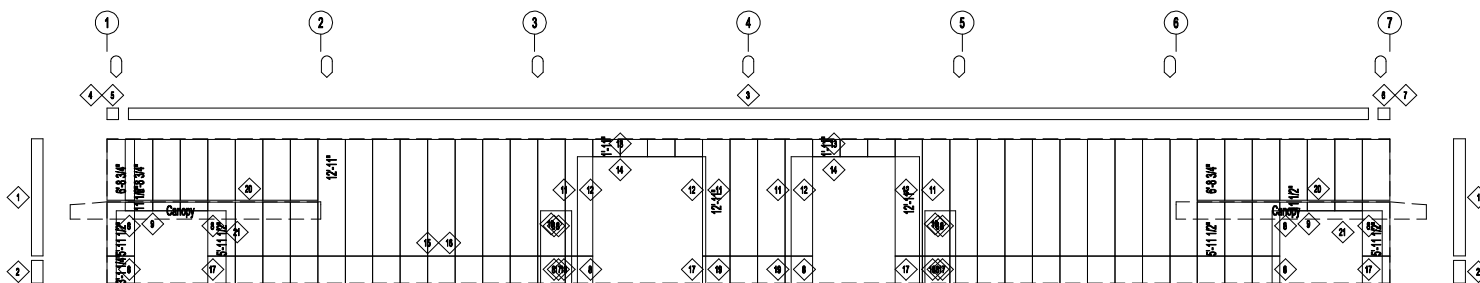
4051 Highway 157 Steppock, AR 72081
(501) 728-2122 www.metalroofingsupply.org

DESCRIPTION: SIDEWALL FRAMING							
CUSTOMER: DLR				PROJECT: Matt Ahart			
LOCATION:							
DRN. BY AW	CKD BY AW	DATE 3/13/25	SCALE N.T.S.	REV. 00	QUOTATION NO. Matt Ahart 1 23 25	SHEET NO. OF	

DOWNSPOUT LOCATIONS



SIDEWALL FRAMING: FRAME LINE D



SIDEWALL SHEETING & TRIM: FRAME LINE D

PANELS: 28 Ga. PR - NEED SIG 200

BOLT TABLE FRAME LINE D				
LOCATION	QUAN	TYPE	DIA	LENGTH
EB-3 (L)	4	A325	3/4"	2"
EB-3 (R)	4	A325	5/8"	
EB-3 (L)	4	A325	5/8"	
EB-3 (R)	4	A325	3/4"	2"

TRIM TABLE FRAME LINE D			
ID	PART	LENGTH	DETAIL
1	FL302	14'-0"	TRIM_198
2	FL303	10'-2"	TRIM_198
3	FL188	20'-2"	
4	FL18M	10'-2"	
5	FL18A	6"	
6	FL18M	10'-2"	
7	FL18A	6"	
8	FL22	7'-3"	TRIM_238
9	FL28B	12'-4"	TRIM_232
10	FL25	7'-1"	TRIM_232
11	FL37A	12'-4"	TRIM_242
12	FL27B	12'-0"	TRIM_238
13	FL37B	14'-4"	TRIM_235
14	FL28C	14'-4"	TRIM_232
15	SPCL-06	10'-2"	TRIM_273
16	SPCL-06	SCRAP	TRIM_273
17	FL22	SCRAP	TRIM_238
18	FL37	10'-2"	TRIM_242
19	FL37	SCRAP	TRIM_242
20	FL185	10'-2"	TRIM_242
21	FL28B	12'-4"	TRIM_309

MEMBER TABLE FRAME LINE D		
MARK	PART	LENGTH
EB-2	BEAM	4'-4 7/8"
EB-3	BEAM	22'-11 3/4"
EB-8	BEAM	4'-4 7/8"
DJ-3	8X35C14	15'-5 1/4"
DJ-4	8X35C14	15'-5 1/4"
DJ-5	8X35C14	15'-5 1/4"
DJ-6	8X35C14	15'-5 1/4"
DJ-7	8X35C14	15'-5 1/4"
DJ-8	8X35C14	15'-5 1/4"
DH-1	8X25C16	12'-0"
DH-2	8X25C16	3'-4 1/2"
DH-3	8X25C16	14'-0"
E-1	EB06342L	23'-3 1/2"
E-2	EB06342L	23'-3 1/2"
E-3	EB06342L	23'-3 1/2"
E-4	EB06342L	23'-3 1/2"
E-5	EB06342L	23'-3 1/2"
G-7	8X25C16	6"
G-8	8X25C16	11'-11 1/2"
G-9	8X25C16	11'-2"
G-10	8X25C16	10'-4"
G-11	8X25C16	24'-10"
G-12	8X25C16	3'-4"
G-13	8X25C16	5'-8"
G-14	8X25C16	9'-8"
G-15	8X25C16	24'-10 1/2"
G-16	8X25C16	11'-4"
G-17	8X25C16	10'-6"
G-18	8X25C16	6"
CB-1	BR12	28'-0"

Daniel King

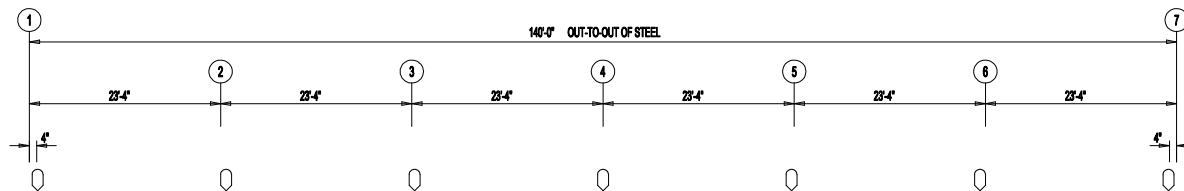
3/18/2025



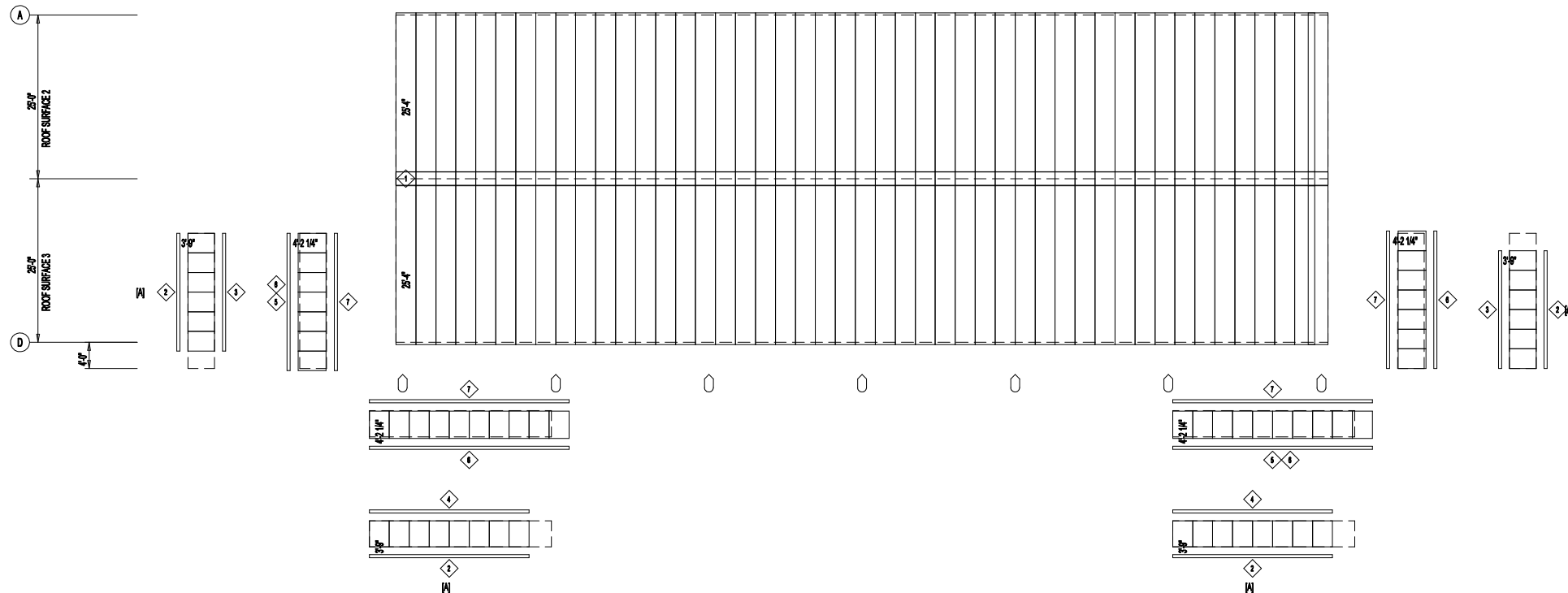
4051 Highway 157 Steeple, AR 72081
(501) 728-2122 www.metalroofingsupply.org

DESCRIPTION: SIDEWALL FRAMING						
CUSTOMER: DLR				PROJECT: Matt Ahart		
LOCATION:						
DRN. BY AW	OKTD BY AW	DATE 3/13/25	SCALE N.T.S.	REV. 00	QUOTATION NO. Matt Ahart 1 23 25	SHEET NO. OF

○ DOWNSPOUT LOCATIONS



TRIM TABLE			
ROOF PLAN			
NO.	PART	LENGTH	DETAIL
1	FL49	3'-0"	TRIM_320
2	FL848	10'-2"	
3	FL28E	18'-4"	
4	FL28B	12'-4"	TRIM_316
5	FL19	10'-2"	
6	FL18A	20'-2"	
7	FL18S	10'-2"	TRIM_309



ROOF SHEETING PLAN

PANELS: 24 Ga. PR - NEED SIG 200
[A] SOFFIT PANELS: 28 Ga. PR - NEED SIG 200

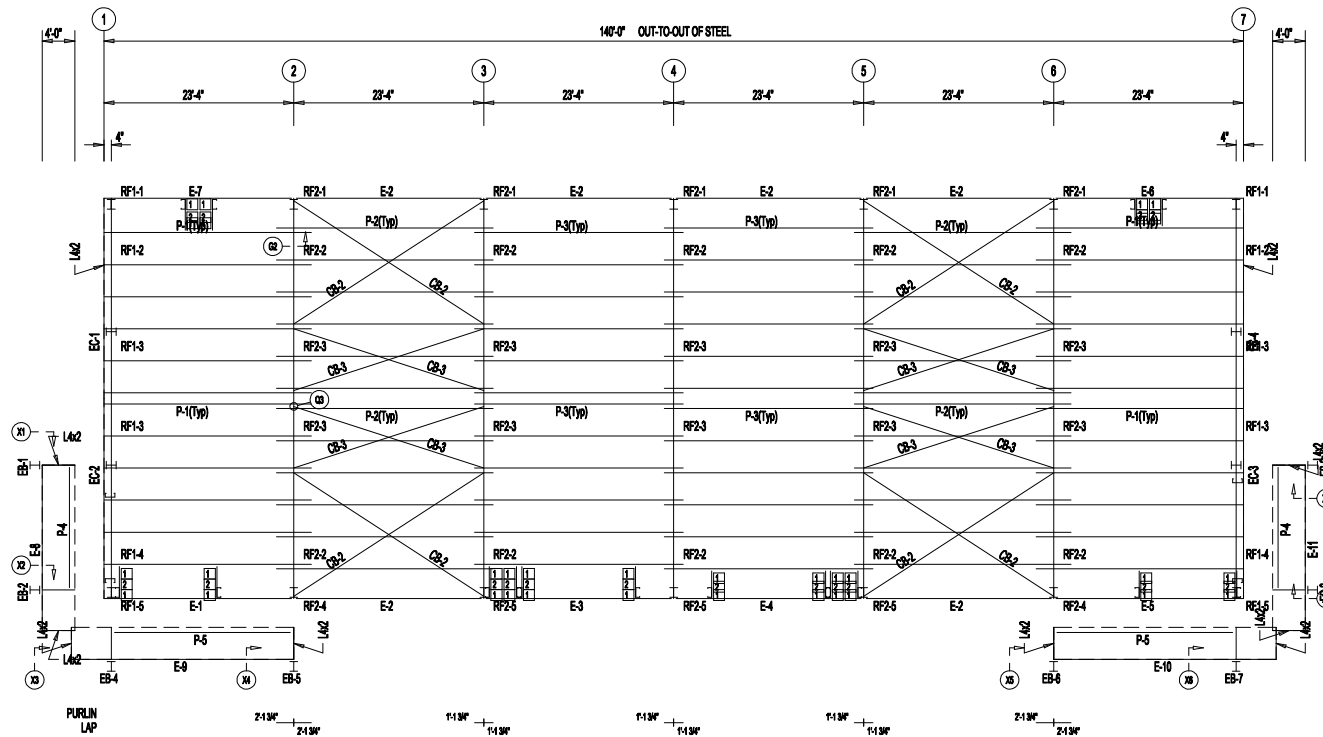
Daniel King

3/18/2025



4051 Highway 157 Stepec, AR 72081
(501) 728-2122 www.metalroofingsupply.org

DESCRIPTION: ROOF SHEETING							
CUSTOMER: DLR				PROJECT: Matt Ahart			
LOCATION:							
DRN. BY AW	CKD BY AW	DATE 3/13/25	SCALE N.T.S.	REV. 00	QUOTATION NO. Matt Ahart 1 23 25	SHEET NO. OF	



ROOF FRAMING PLAN

EXTENSION/CANOPY BOLTS ROOF PLAN				
MARK	QUAN	TYPE	DIA	LENGTH
EB-1	4	A325	3/4"	2"
EB-2	4	A325	3/4"	2"
EB-4	4	A325	3/4"	2"
EB-5	4	A325	3/4"	2"
EB-6	4	A325	3/4"	2"
EB-7	4	A325	3/4"	2"
EB-8	4	A325	3/4"	2"
EB-9	4	A325	3/4"	2"

TRIM TABLE ROOF PLAN		
ID	PART	DETAIL
1	FL49	TRIM 320

MEMBER TABLE ROOF PLAN		
MARK	PART	LENGTH
EB-1	BEAM	4'-0 3/4"
EB-2	BEAM	4'-4 7/8"
EB-4	BEAM	4'-0 7/8"
EB-5	BEAM	4'-0 7/8"
EB-6	BEAM	4'-0 7/8"
EB-7	BEAM	4'-0 7/8"
EB-8	BEAM	4'-4 7/8"
EB-9	BEAM	4'-0 3/4"
P-1	8X25Z14	25'-5 1/2"
P-2	8X25Z16	25'-7 1/2"
P-3	8X25Z16	25'-7 1/2"
P-4	8X25Z16	15'-0 3/8"
P-5	8X32Z12	22'-5 1/2"
E-1	E06S342L	23'-3 1/2"
E-2	E06S342L	23'-3 1/2"
E-3	E06S342L	23'-3 1/2"
E-4	E06S342L	23'-3 1/2"
E-6	E06S342L	23'-3 1/2"
E-6	E06S342L	23'-3 1/2"
E-7	E06S342L	23'-3 1/2"
E-8	E06S341L	15'-10 5/8"
E-9	E06S321L	27'-3 1/2"
E-10	E06S341L	27'-3 1/2"
E-11	E06S341L	15'-10 5/8"
CB-2	BR12	27'-9 1/2"
CB-3	BR12	24'-10 1/4"

CONNECTION PLATES ROOF PLAN		
ID	MARK	PART
1	d1	
2	JPB	

ROOF SHEETING
PANELS: 24 Ga. PR
NEED SIG 200

Daniel King
3/18/2025

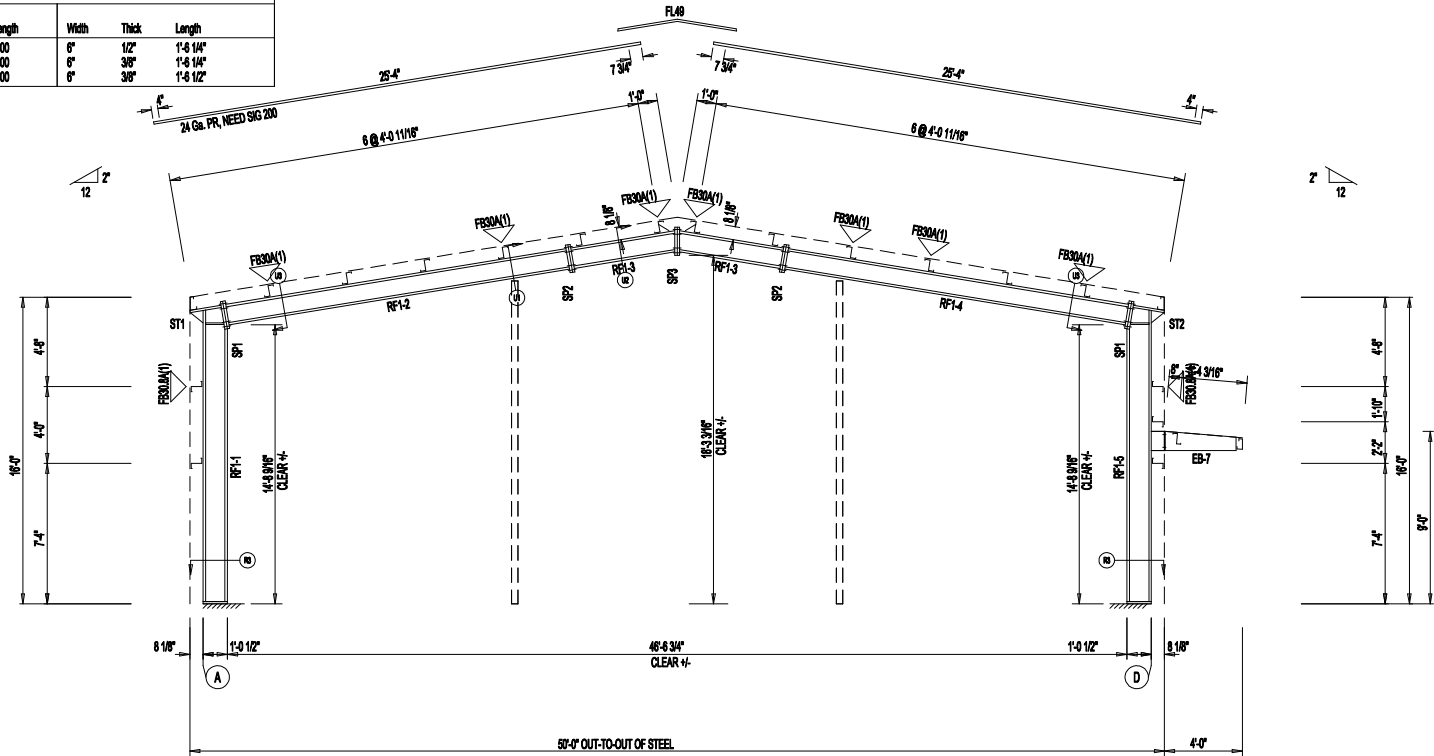


DESCRIPTION: ROOF FRAMING						
CUSTOMER: DLR				PROJECT: Matt Ahart		
LOCATION:						
DRN. BY AW	CKD BY AW	DATE 3/13/25	SCALE N.T.S.	REV. 00	QUOTATION NO. Matt Ahart 1 23 25	SHEET NO. OF

WELD TABLE					
Splice Mark	Top Flange Type	Top Flange Size	Bot Flange Type	Bot Flange Size	Web Type
SP-1	F2	0.313	F1	0.375	F1
SP-1	F2	0.313	F2	0.188	F1
SP-2	F2	0.125	F2	0.188	F1
SP-2	F2	0.125	F2	0.188	F1
SP-3	F2	0.125	F2	0.188	F1
SP-3	F2	0.125	F2	0.188	F1
SP-2	F2	0.125	F2	0.188	F1
SP-2	F2	0.125	F2	0.188	F1
SP-1	F2	0.313	F2	0.188	F1
SP-1	F2	0.313	F1	0.375	F1
ST1	F1	0.375	F1	0.375	F1
ST2	F1	0.375	F1	0.375	F1

SPICE PLATE & BOLT TABLE									
Mark	Qty	Top	Bot	Int	Type	Dia	Length	Width	Thick
SP1	4	4	0	0	A325	0.750	2.00	8"	1/2"
SP2	4	4	0	0	A325	0.750	2.00	8"	3/8"
SP3	4	4	0	0	A325	0.750	2.00	8"	1/2"


▽ FLANGE BRACES: Both Sides(U.N.)
 FB00A(1): xx=length(in)
 A - FB15K108



RIGID FRAME ELEVATION: FRAME LINE 1 7

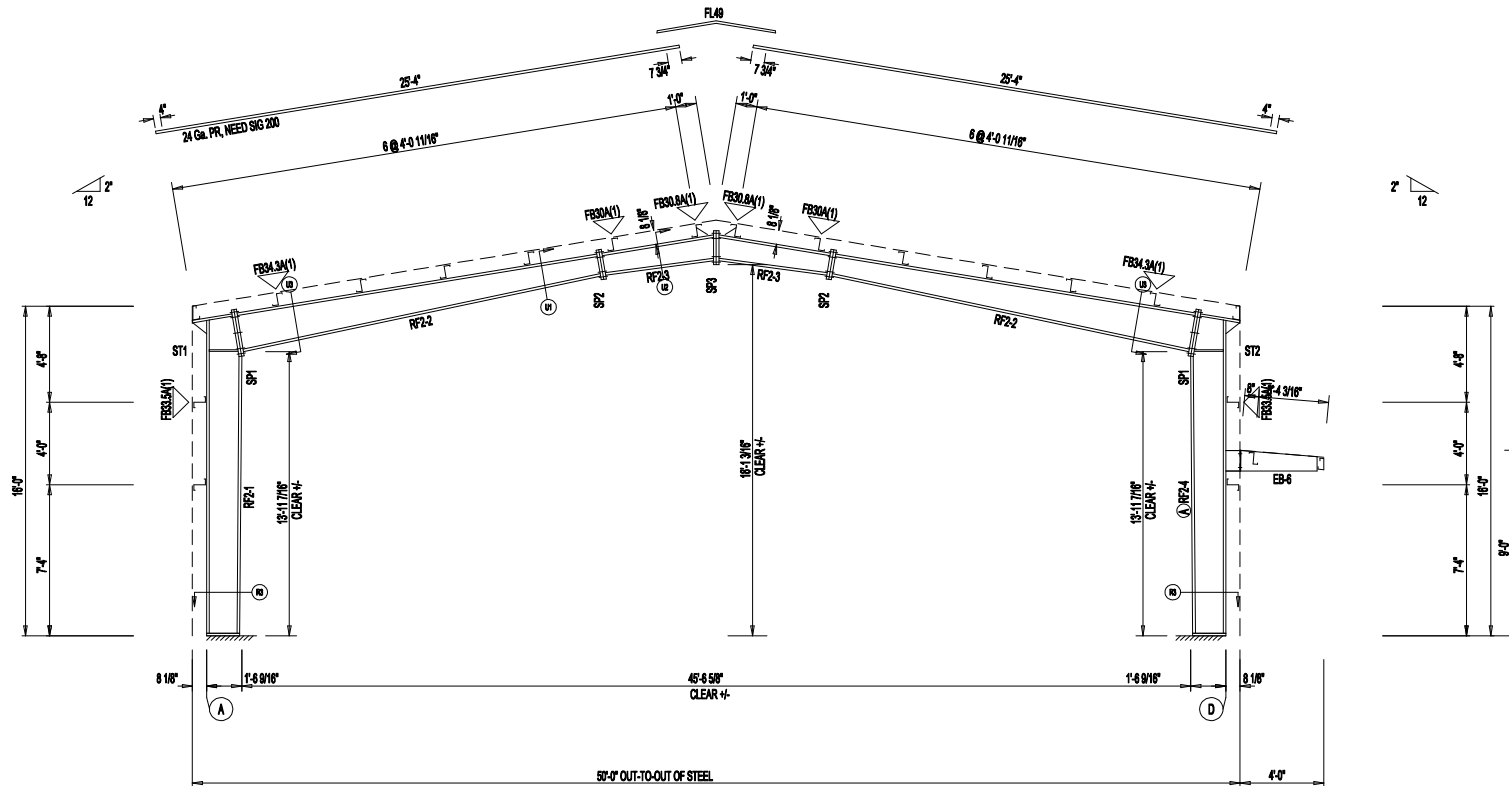
Daniel King
 3/18/2025



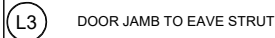
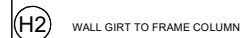
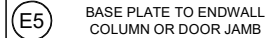
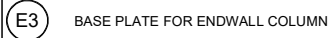
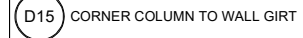
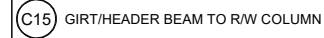
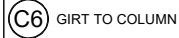
 4051 Highway 157 Stepec, AR 72081 (501) 728-2122 www.metalroofingsupply.org		DESCRIPTION: RIGID FRAME ELEVATION					
		CUSTOMER: DLR			PROJECT: Matt Ahart		
DRN BY: AW		CKD BY: AW		DATE: 3/13/25	SCALE: N.T.S.	REV: 00	QUOTATION NO. Matt_Ahart_1_23_25
							SHEET NO. OF

ALTERNATE MEMBER		
Frame Line	<input type="radio"/> ID	Mark
3	A	RF2-5
4	A	RF2-5
5	A	RF2-5

MEMBER TABLE							
Mark	Weight	Length	Web Depth	Web Plate		Outside Flange W x Thk x Length	Inside Flange W x Thk x Length
			Start/End	Thick	Length		
RF2-1	321	15'-5 1/8"	18.0/18.8 18.6/17.7	0.135 0.135	4'-0" 7'-7"	5 x 14" x 15'-4 5/8" 5 x 14" x 1'-10 11/16"	5 x 5/16" x 13'-7 3/16"
RF2-2	321	17'-9 1/8"	17.7/18.0 20.0/14.4	0.188 0.135	4'-0" 9'-11"	5 x 14" x 17'-8 1/8"	5 x 1/4" x 17'-8 3/8"
RF2-3	110	9'-7 13/16"	14.4/10.0 10.0/12.0	0.135 0.135	7'-9 1/8" 5'-8 15/16"	5 x 14" x 9'-8 15/16"	5 x 1/4" x 5'-4 7/8"
RF2-4	346	19'-5 1/8"	18.0/17.7 17.7/18.8	0.188 0.135	4'-0" 7'-7"	5 x 14" x 1'-10 11/16" 5 x 14" x 15'-4 5/8"	5 x 5/16" x 13'-7 3/16"
EB-6	81	4'-0 7/8"	18.6/18.0 7.5/11.5	0.135 0.135	4'-0" 4'-0 7/8"	5 x 14" x 4'-0 7/8"	5 x 1/4" x 4'-0 7/8"



DESCRIPTION: RIGID FRAME ELEVATION									
CUSTOMER: DLR					PROJECT: Matt Ahart				
LOCATION:									
DRN. BY AW	CKD BY AW	DATE 3/13/25	SCALE N.T.S.	REV. 00	QUOTATION NO. Matt Ahart 1 23 25				SHEET NO. OF



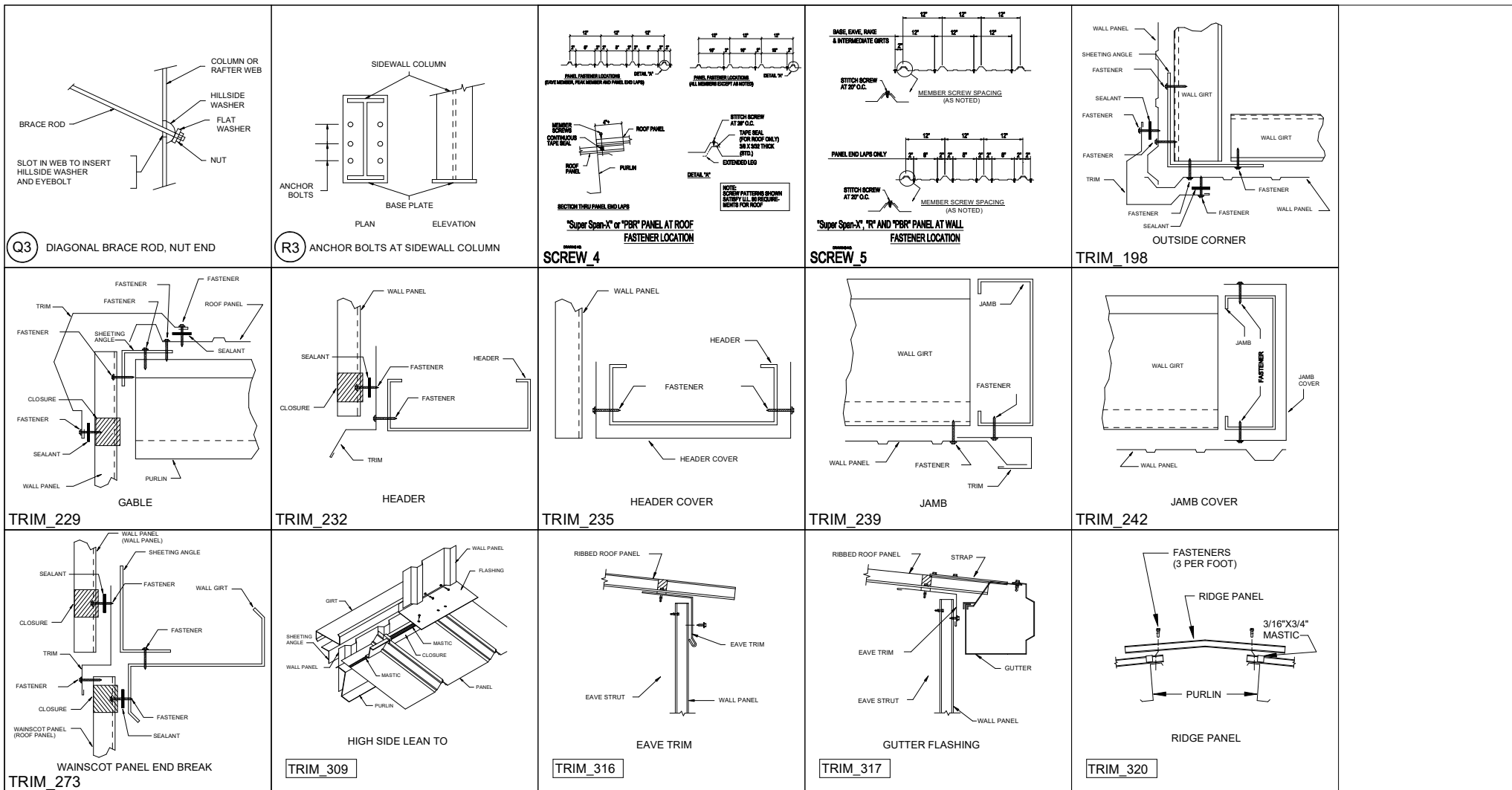
STATE OF
ARKANSAS

LICENSED
PROFESSIONAL
ENGINEER
No. 22775

DANIEL KEITH KING



DESCRIPTION: DETAIL DRAWINGS									
CUSTOMER: DLR					PROJECT: Matt Ahart				
LOCATION:									
DRN. BY AW	CKD BY AW	DATE 3/13/25	SCALE N.T.S.	REV. 00	QUOTATION NO. Matt Ahart 1 23 25				SHEET NO. OF



Daniel King
3/18/2025



DESCRIPTION: DETAIL DRAWINGS						
CUSTOMER: DLR				PROJECT: Matt Ahart		
LOCATION:						
DRN. BY AW	CKD BY AW	DATE 3/13/25	SCALE N.T.S.	REV. 00	QUOTATION NO. Matt Ahart 1 23 25	SHEET NO. OF

<p>U1 BOLTED END PLATE RAFTER SPLICE</p>	<p>U2 BOLTED END PLATE CONNECTION AT BUILDING PEAK</p>	<p>U3 BOLTS FOR RAFTER TO COLUMN CONNECTION</p>	<p>X1</p>	<p>X2</p>
<p>X3</p>	<p>X4</p>	<p>X5</p>	<p>X6</p>	<p>X7</p>
<p>X8</p>				

Daniel King
3/18/2025



<p>4051 Highway 157 • Stepecok, AR 72081 (501) 728-2122 www.metalroofingsupply.org</p>		DESCRIPTION: DETAIL DRAWINGS			
		CUSTOMER: DLR		PROJECT: Matt Ahart	
LOCATION:		DATE		QUOTATION NO.	
DRN. BY	CKD BY	DATE	SCALE	REV.	SHEET NO.
AW	AW	3/13/25	N.T.S.	00	Matt_Ahart_1_23_25 OF