

PREMIER FLEX SPACE FOR LEASE



SPACE HIGHLIGHTS

- **20,560 SF Available**
- **Free, Convenient On-site Parking**
- Positioned in a **well-maintained** and **secured** business park setting
- Accommodates large and small businesses
- Appropriate for high-tech, showroom, sales/service and office applications
- Prominent I-35 Building Signage
- **Google Fiber Available**
- **Clear visibility** and **instant accessibility** to I-35
- **Great location** central to the city's major thoroughfares; moments from the Plaza, Crown Center, Westport and Downtown

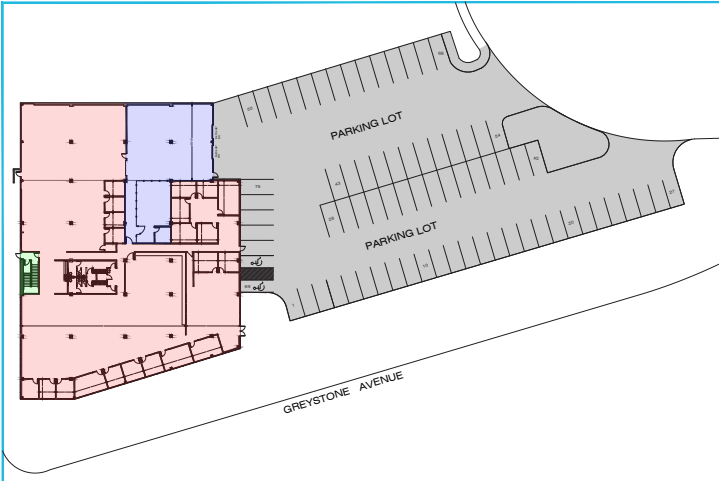
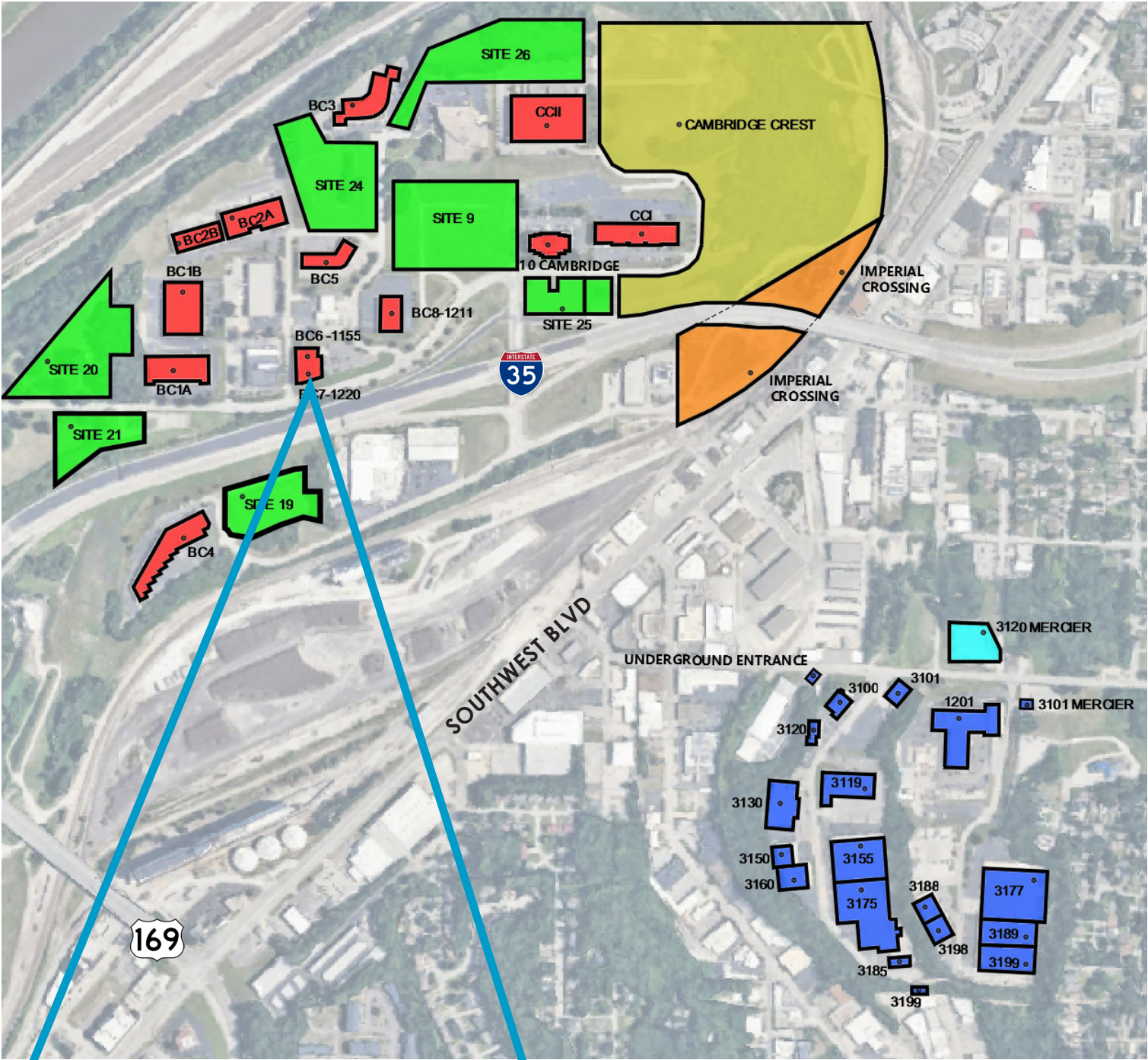
LEASING CONTACT

MOLLY CRAWFORD MUNNINGHOFF

P (816) 701-5013

mcrawford@copaken-brooks.com

LOCATION



PREMIER OFFICE SPACE FOR LEASE



LEASING CONTACT

MOLLY CRAWFORD MUNNINGHOFF

P (816) 701-5013

mcrawford@copaken-brooks.com

All information furnished regarding property for sale or lease is from sources deemed reliable, but no warranty or representation is made as to the accuracy thereof and the same is subject to errors, omissions, changes of prices, rental or other conditions, prior sale or lease, or withdrawal without notice.