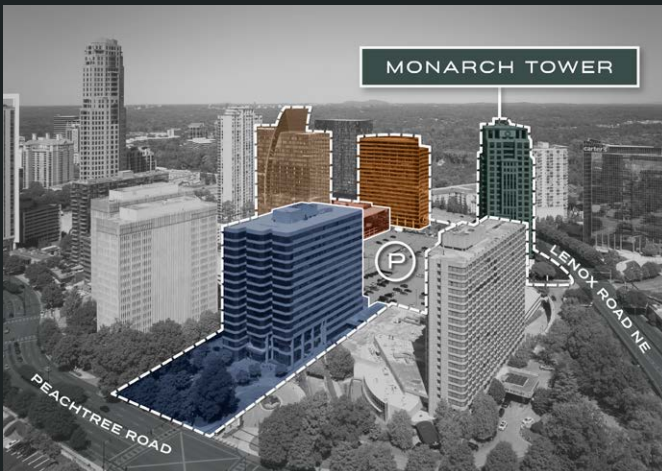


# MONARCH TOWER

3424 PEACHTREE ROAD

## Novel Impression

A Highwoods Buckhead Collection  
Signature Property



 Highwoods®

# Signature Experience

Monarch Tower is a 527,700 SF office destination for industry-leading companies rising 24 stories above the intersection of GA-400 and Lenox Road.

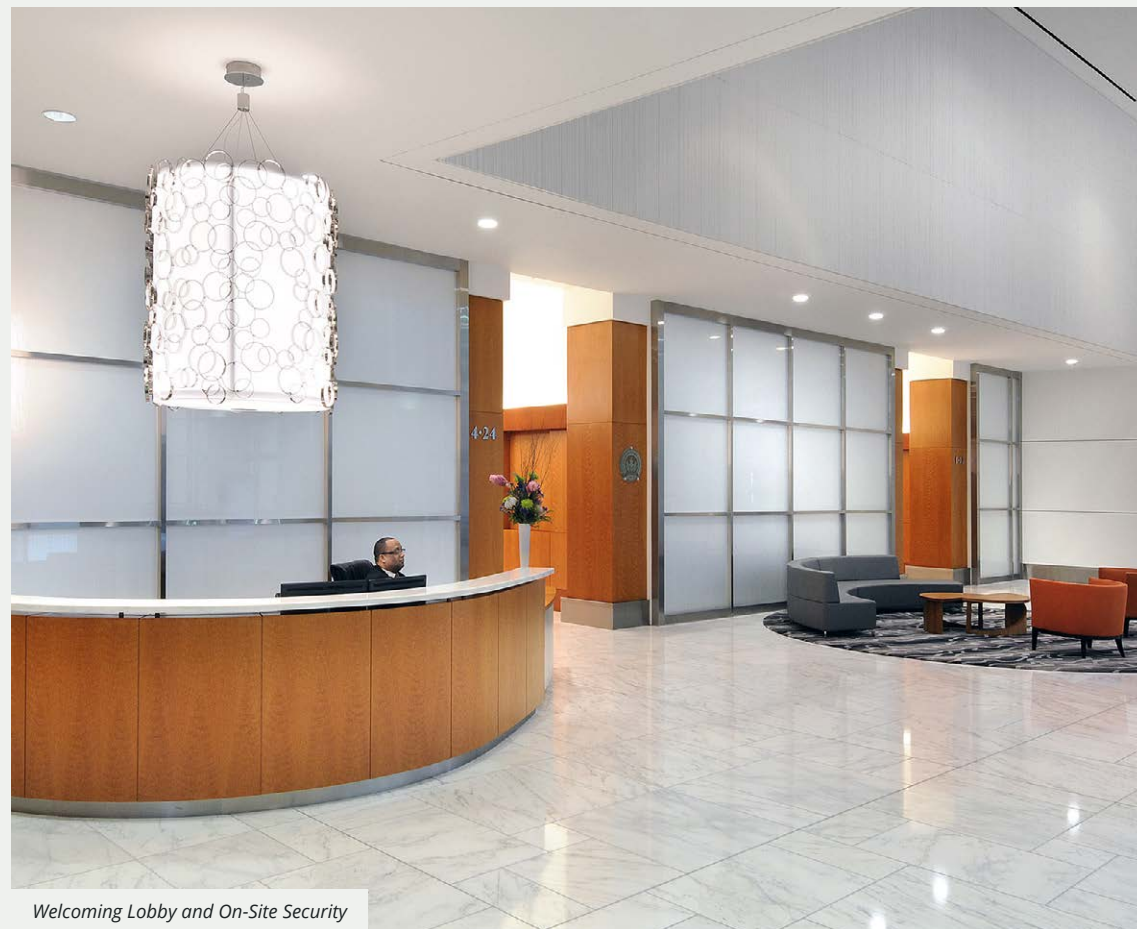
An integral part of The Highwoods Buckhead Collection, Monarch Tower offers customers unrestricted access to resort-quality amenities both on-site and across three elite sister buildings. Marked by the Highwoods promise of signature service, The Buckhead Collection also delivers an unwavering level of attention and hospitality that is felt by both customers and staff.

## ON-SITE CONVENIENCES

- Spark Conference Center
- Monarch Athletic Club
- Customer Lounge
- SmartPark™
- EV Parking/Charging Stations
- Connected, Covered Parking Deck with Dedicated Entry
- On-Site Property Management Office and Security
- Bike Storage
- On-Site Express Mail Dropbox
- Auto Detailing Service
- Dry-Cleaning
- Immediate Access to GA-400, Peachtree and Lenox Roads
- Direct Access to MARTA Buckhead Station
- On-Site F&B Options, Including Upscale Dining

NEW YORK  
PRIME

Simmer



Welcoming Lobby and On-Site Security



On-Site Outdoor Venues with Monthly Programming



Monarch Athletic Club

# Perfectly Situated

In addition to superior accessibility making commutes seamless, The Buckhead Collection is surrounded by a wide variety of world-class hotels, upscale shops and foodie-approved dining destinations.

WALK SCORE  
86

## COMMUTE EFFICIENTLY

Four direct ingress/egress routes offer superior access to GA-400, Peachtree and Lenox Roads via Stratford and Lenox Roads.

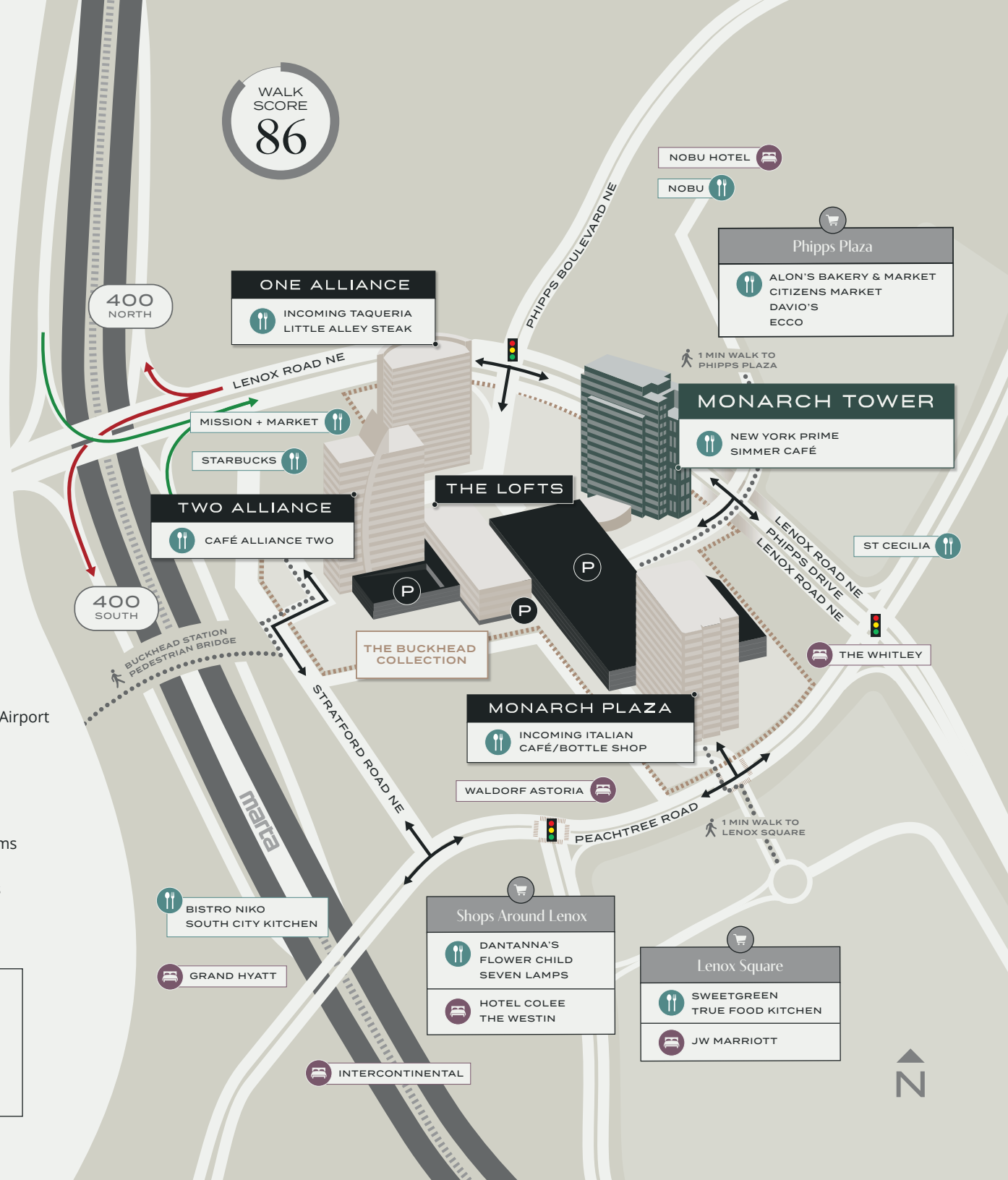
- **2 Minute** Drive to GA-400
- **5 Minute** Walk to MARTA (Buckhead Station)
- **6 Minute** Drive to I-85
- **15 Minute** Drive to Dekalb-Peachtree Airport
- **30 Minute** Drive to Hartsfield-Jackson International Airport

## WALKABLE TO:

- 14+** Walking Trails
- 5,572+** Hotel Rooms
- 230+** Dining Options
- 240+** Retail Stores

**Map Key**

- Pedestrian Access
- Ingress/Egress Access
- Direct Ingress/Egress Access from GA-400



# MONARCH TOWER

JOHN GRIMSLEY  
404-443-1875  
john.grimsley@highwoods.com

KATY ADAMS  
404-443-1869  
katy.adams@highwoods.com

A HIGHWOODS BUCKHEAD COLLECTION SIGNATURE PROPERTY

ONE ALLIANCE | TWO ALLIANCE | THE LOFTS | MONARCH PLAZA

## OUR DEDICATED COMMITMENT TO SERVICE

At Highwoods, we pledge signature service to our people and properties, shaping workplaces of distinction through three service standards. Through inclusive and amenity-rich environments, active and engaging experiences and a tenacious dedication to delivering first-class service, this set of standards remains core to the Highwoods culture and consistently sets our workplaces apart.

 Highwoods®

HIGHWOODS.COM