



Each office independently owned and operated

FOR SALE | INDUSTRIAL PROPERTY

NIEMEYER INDUSTRIAL CONDO

1556 SOUTHEAST SOUTH NIEMEYER CIRCLE, PORT ST. LUCIE, FL 34952

RE/MAX OF STUART

729 SW Federal Hwy Ste 100

Stuart, FL 34994-2913

800.741.1252

REMAX-STUART-FL.COM



PRESENTED BY:

ROSI SHEPARD

Commercial Advisor

772.288.0287

rosis@remax.net

FL #3320083

DISCLAIMER

The information contained in the following offering memorandum is proprietary and strictly confidential. It is intended to be reviewed only by the party receiving it from RE/MAX of Stuart and it should not be made available to any other person or entity without the written consent of RE/MAX of Stuart.

By taking possession of and reviewing the information contained herein the recipient agrees to hold and treat all such information in the strictest confidence.

The recipient further agrees that recipient will not photocopy or duplicate any part of the offering memorandum. If you have no interest in the subject property, please promptly return this offering memorandum to RE/MAX of Stuart.

This offering memorandum has been prepared to provide summary, unverified financial and physical information to prospective purchasers, and to establish only a preliminary level of interest in the subject property.

The information contained herein is not a substitute for a thorough due diligence investigation.

RE/MAX of Stuart has not made any investigation, and makes no warranty or representation with respect to the income or expenses for the subject property, the future projected financial performance of the property, the size and square footage of the property and improvements, the presence of absence of contaminating substances, PCBs or asbestos, the compliance with local, state and federal regulations, the physical condition of the improvements thereon, or financial condition or business prospects of any tenant, or any tenant's plans or intentions to continue its occupancy of the subject property.

The information contained in this offering memorandum has been obtained from sources we believe reliable; however, RE/MAX of Stuart has not verified, and will not verify, any of the information contained herein, nor has RE/MAX of Stuart conducted any investigation regarding these matters and makes no warranty or representation whatsoever regarding the accuracy or completeness of the information provided.

All potential buyers must take appropriate measures to verify all of the information set forth herein.

Prospective buyers shall be responsible for their costs and expenses of investigating the subject property.

TABLE OF CONTENTS

PROPERTY INFORMATION

- 4 EXECUTIVE SUMMARY
- 5 PROPERTY DESCRIPTION
- 6 COMPLETE HIGHLIGHTS
- 7 ADDITIONAL PHOTOS

LOCATION INFORMATION

- 9 REGIONAL MAP
 - 10 LOCATION MAP
 - 11 AERIAL MAP
 - 12 ADVISOR BIO 1
-

1

PROPERTY INFORMATION

IN THIS SECTION

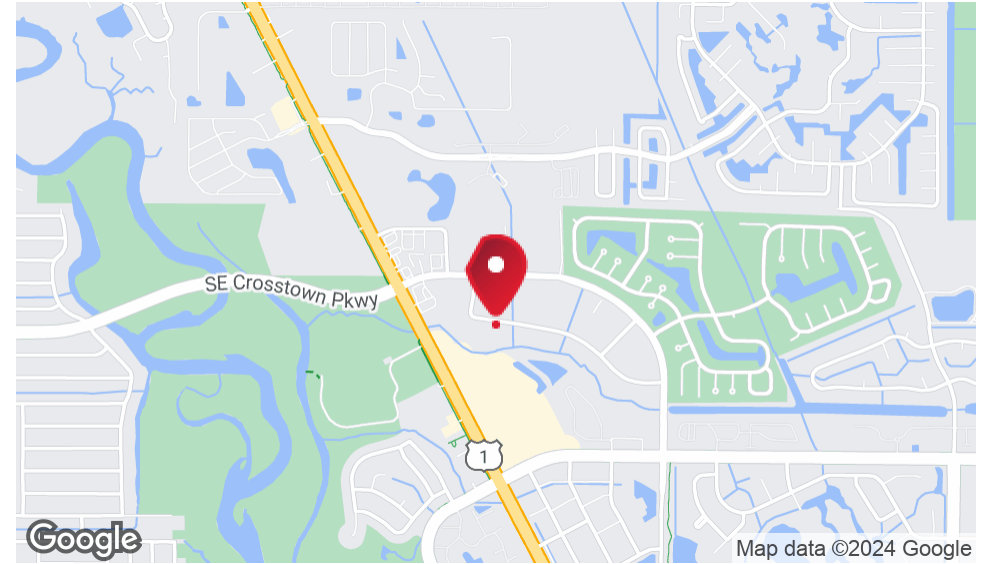
EXECUTIVE SUMMARY

PROPERTY DESCRIPTION

COMPLETE HIGHLIGHTS

ADDITIONAL PHOTOS

EXECUTIVE SUMMARY



OFFERING SUMMARY

Sale Price:	\$380,000
Building Size:	2,006 SF
Number of Units:	1
Price / SF:	\$189.43
Year Built:	1995
Zoning:	WI
Market:	Port Saint Lucie
Submarket:	Industrial

PROPERTY OVERVIEW

Discover an exceptional investment opportunity with this industrial/flex space property in the sought-after Port St. Lucie area. Boasting a prime location and zoned for versatile WI use, this property offers 1 unit, making it an ideal choice for industrial and flex space investors. With its strategic location in Port St. Lucie, this property presents an enticing opportunity to capitalize on the area's growing demand for industrial and flex spaces. Don't miss out on the chance to take advantage of this property's prime position and the potential it offers for a successful industrial/flex space investment.

PROPERTY HIGHLIGHTS

- Versatile zoning WI
- Ideal for industrial and flex space investors
- Prime location in Port St. Lucie East of US1 near Crosstown Parkway
- Opportunity to capitalize on growing demand
- Potential for successful industrial/flex space investment

INDUSTRIAL PROPERTY
FOR SALE

RE/MAX OF STUART

Each office independently owned and operated

729 SW Federal Hwy Ste 100
Stuart, FL 34994-2913

800.741.1252

REMAX-STUART-FL.COM

PROPERTY DESCRIPTION



INDUSTRIAL PROPERTY
FOR SALE

RE/MAX OF STUART

Each office independently owned and operated

PROPERTY DESCRIPTION

Discover an exceptional investment opportunity with this industrial/flex space property in the sought-after Port St. Lucie area. Boasting a prime location and zoned for versatile WI use, this property offers 1 unit, making it an ideal choice for industrial and flex space investors. With its strategic location in Port St. Lucie, this property presents an enticing opportunity to capitalize on the area's growing demand for industrial and flex spaces. Don't miss out on the chance to take advantage of this property's prime position and the potential it offers for a successful industrial/flex space investment.

LOCATION DESCRIPTION

Discover the thriving industrial landscape surrounding the property in Port St. Lucie, FL. Port St. Lucie is a strategic hub for industrial and warehouse building investors and owner-users, offering a prime location and access to a skilled workforce. The area's close proximity to the Tradition Center for Innovation, the Port St. Lucie Business Park, and the St. Lucie Medical Center makes it an attractive location for industrial development. With easy access to major transportation routes and the nearby Port of Palm Beach, the location presents an ideal opportunity for industrial real estate investment or owner-user occupation in a dynamic and growing market.

PARKING DESCRIPTION

Open Parking

CONSTRUCTION DESCRIPTION

Metal Building Wood Frame

COMPLETE HIGHLIGHTS



PROPERTY HIGHLIGHTS

- - Versatile zoning WI
- - Ideal for industrial and flex space investors
- - Prime location in Port St. Lucie East of US1 near Crosstown Parkway
- - Opportunity to capitalize on growing demand
- - Potential for successful industrial/flex space investment
- - Perfect for an Owner User as well



INDUSTRIAL PROPERTY
FOR SALE

RE/MAX OF STUART

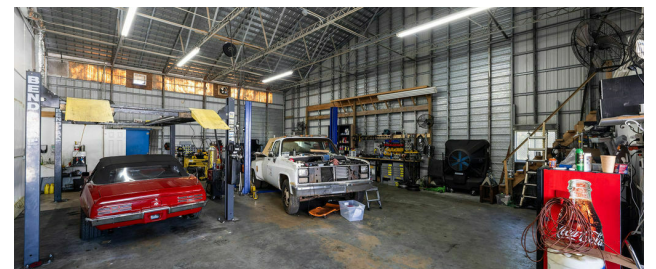
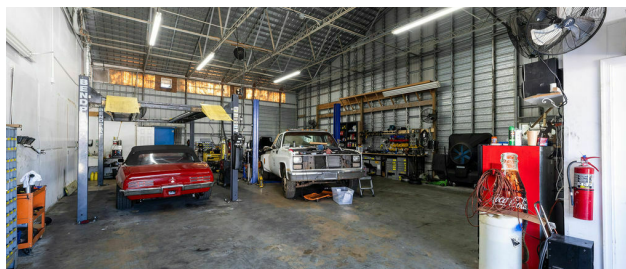
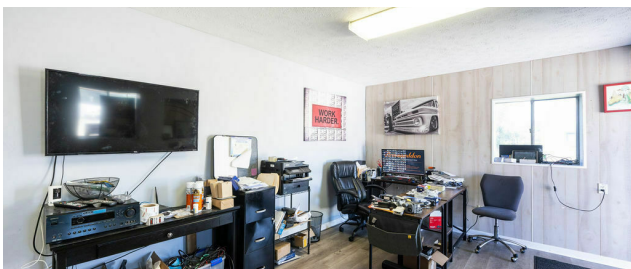
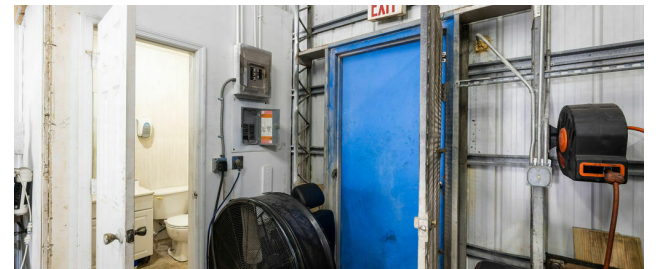
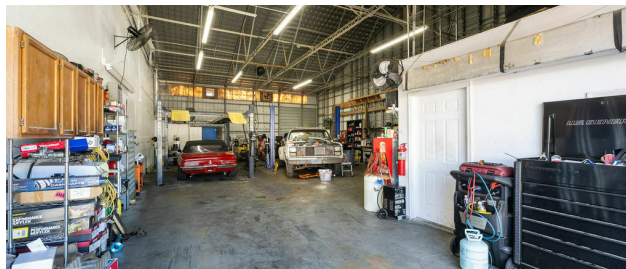
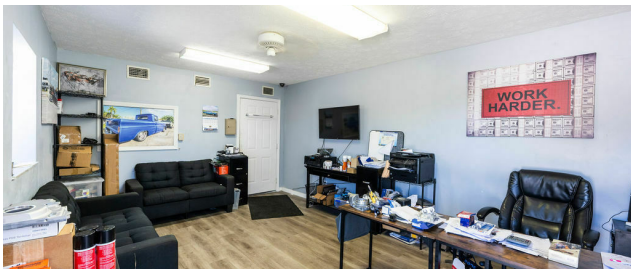
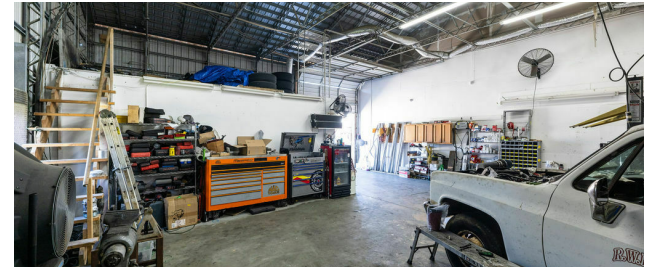
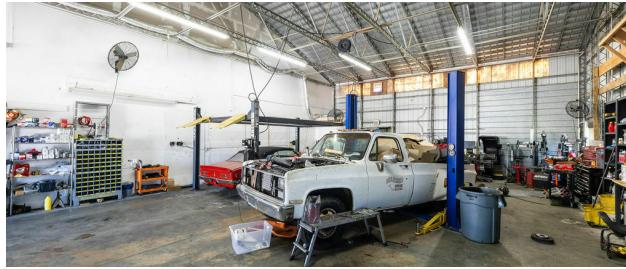
Each office independently owned and operated

729 SW Federal Hwy Ste 100
Stuart, FL 34994-2913

800.741.1252

REMAX-STUART-FL.COM

ADDITIONAL PHOTOS



INDUSTRIAL PROPERTY
FOR SALE

RE/MAX OF STUART

Each office independently owned and operated

729 SW Federal Hwy Ste 100
Stuart, FL 34994-2913

800.741.1252

REMAX-STUART-FL.COM

2

LOCATION INFORMATION

IN THIS SECTION

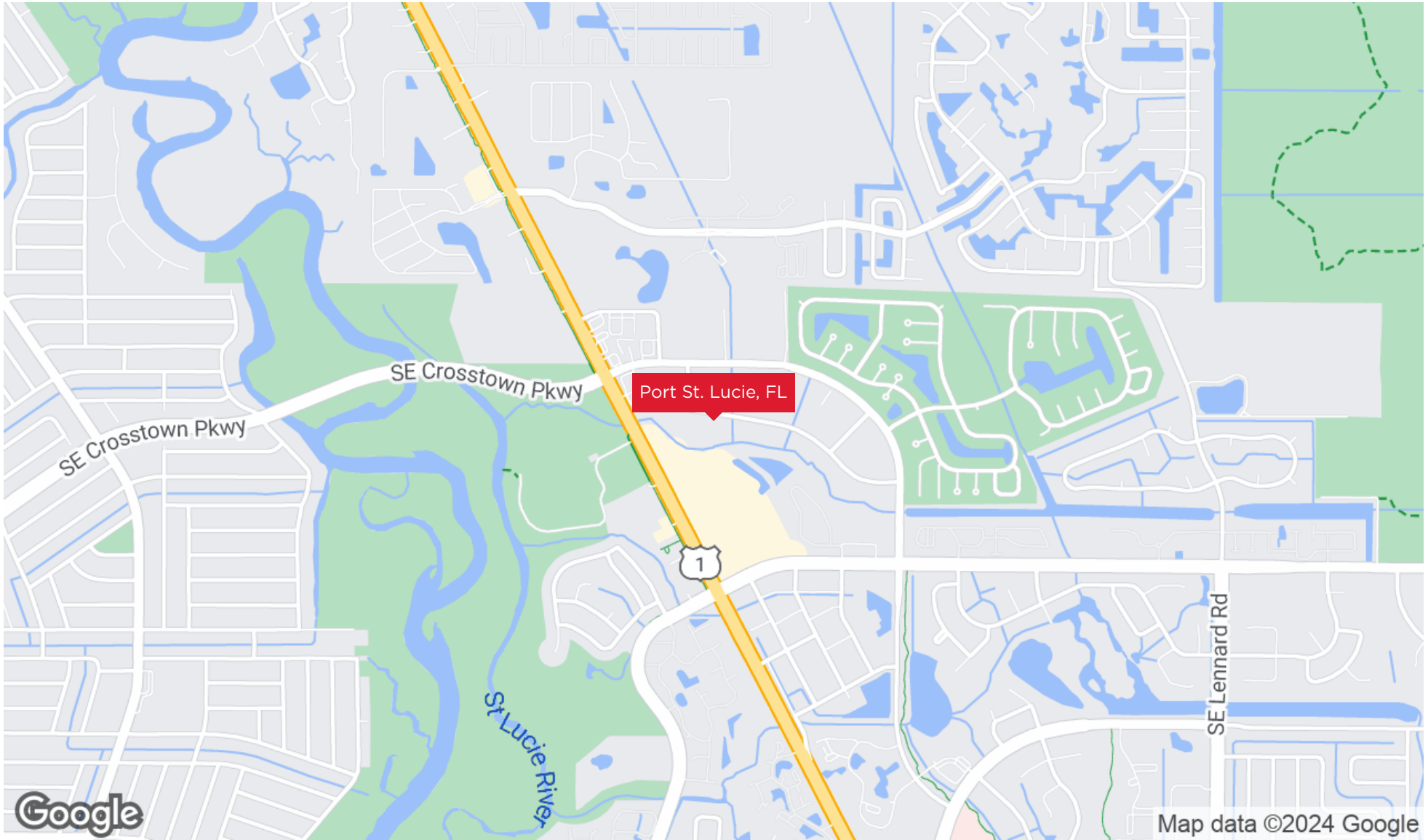
REGIONAL MAP

LOCATION MAP

AERIAL MAP

ADVISOR BIO 1

REGIONAL MAP



INDUSTRIAL PROPERTY
FOR SALE

RE/MAX OF STUART
Each office independently owned and operated

729 SW Federal Hwy Ste 100
Stuart, FL 34994-2913

800.741.1252

REMAX-STUART-FL.COM

LOCATION MAP



INDUSTRIAL PROPERTY
FOR SALE

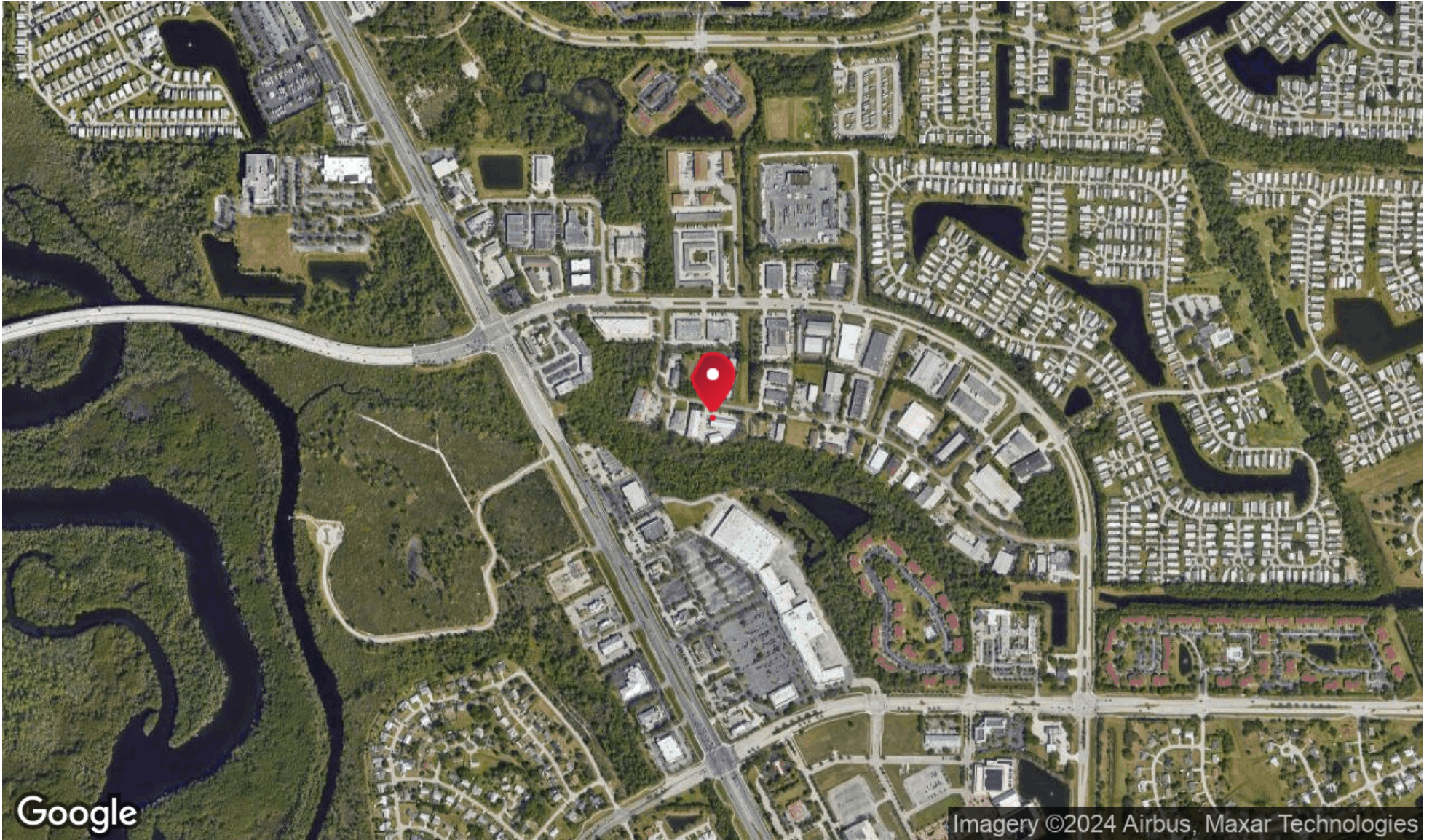
RE/MAX OF STUART
Each office independently owned and operated

729 SW Federal Hwy Ste 100
Stuart, FL 34994-2913

800.741.1252

REMAX-STUART-FL.COM

AERIAL MAP



INDUSTRIAL PROPERTY
FOR SALE

RE/MAX OF STUART
Each office independently owned and operated

729 SW Federal Hwy Ste 100
Stuart, FL 34994-2913

800.741.1252

REMAX-STUART-FL.COM

//ADVISOR BIO 1



ROSI SHEPARD

Commercial Advisor

rosis@remax.net

Direct: **772.288.0287** | Cell: **772.323.7037**

FL #3320083

RE/MAX of Stuart

729 SW Federal Hwy Ste 100
Stuart, FL 34994-2913
800.741.1252

INDUSTRIAL PROPERTY
FOR SALE

RE/MAX OF STUART

Each office independently owned and operated

729 SW Federal Hwy Ste 100
Stuart, FL 34994-2913

800.741.1252

REMAX-STUART-FL.COM