



Available For Lease | ±4,765 SF

Industrial/Office Building

20990 – 21030 Redwood Road | Castro Valley, CA



Michael Donnelly, SIOR

Senior Vice President
CA License No. 01402626
michael.donnelly@colliers.com
+1 510 579 1266



Bevan Lew

Real Estate Advisor
CA License No. 01513966
bevanlew@capitalproperties-sf.com
+1 415 373 8314

20990 – 21030 Redwood Road | Castro Valley

Overview

Building Specifications

Building Size

±35,032 SF multi-tenant commercial building

Doors

Warehouse units include grade level roll-up doors

Parking

3.5/1,000 parking ratio

Highlights

Superior access to I-580, walking distance to BART

Prominent signage

Mail-room with common restrooms

Within a business park

- *Commuting/dining/entertainment perks and marketing opportunities for tenants and staff*



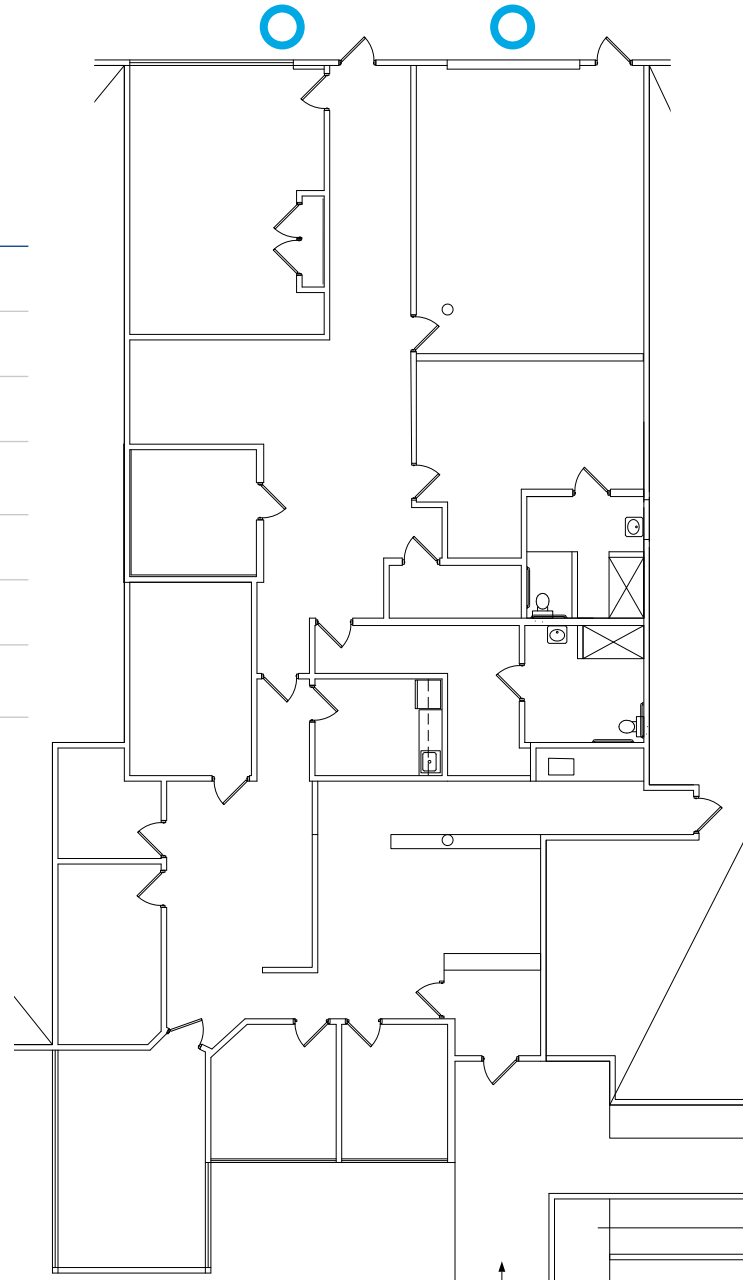
Existing Warehouse Floor Plan



Grade Level Door

Suite 21020

Unit Size	±4,765 SF
Offices	8
Breakroom	One
Large Conference Rooms	Two
Warehouse	10%
Office	90%
Secured Yard	±5,200 net usable square feet of secured yard space



Potential Warehouse Floor Plan

 Grade Level Door

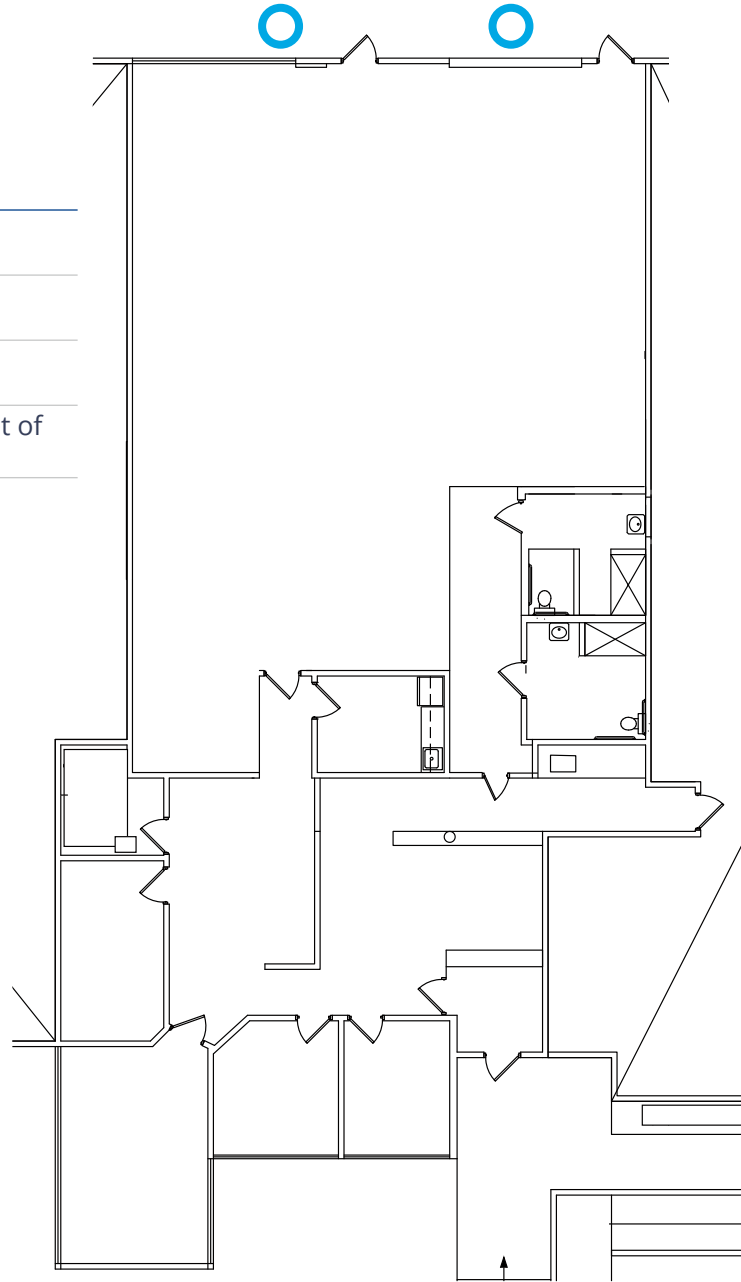
Suite 21020

Unit Size ±4,765 SF

Warehouse 40%

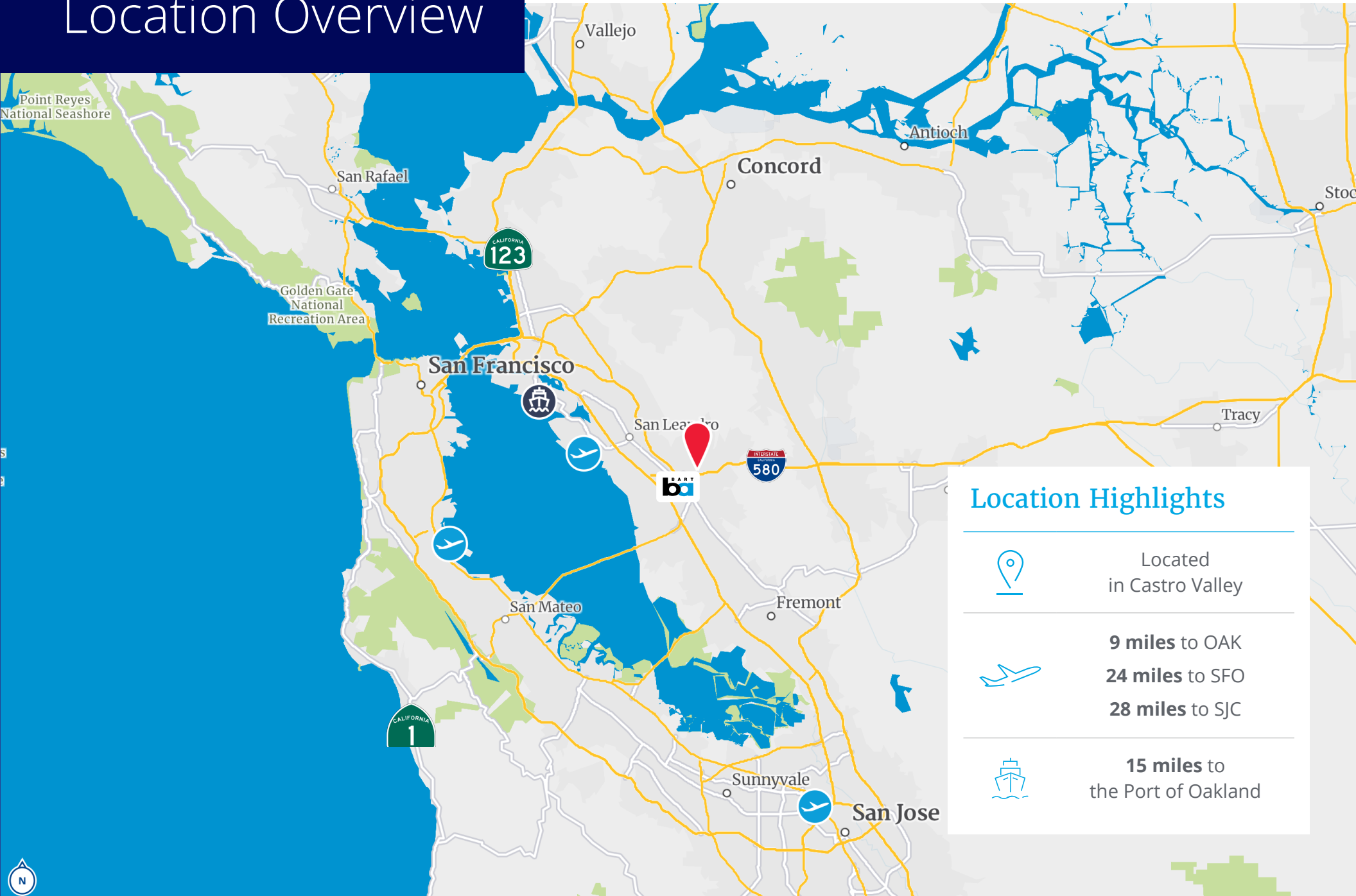
Office 60%

Secured Yard ±5,200 net usable square feet of secured yard space



20990 – 21030 Redwood Road | Castro Valley

Location Overview



Location Highlights



Located
in Castro Valley



9 miles to OAK
24 miles to SFO
28 miles to SJ



15 miles to
the Port of Oakland



20990 – 21030 Redwood Road | Castro Valley

Available For Lease | ±4,765 SF Industrial/Office Building

Contact Brokers

Michael Donnelly, SIOR

Senior Vice President
CA License No. 01402626
michael.donnelly@colliers.com
+1 510 579 1266

Bevan Lew

Real Estate Advisor
CA License No. 01513966
bevanlew@capitalproperties-sf.com
+1 415 373 8314

Copyright © 2024 Colliers.
Information herein has been obtained from sources
deemed reliable, however its accuracy cannot be
guaranteed. The user is required to conduct their
own due diligence and verification.

