

MAPLE PLAZA

327-333 STATE ROAD 19 | PALATKA, FL 32177



LEASING NOW

- 14,630 SF AVAILABLE
- ANCHORED BY HARBOR FREIGHT AND STAPLES

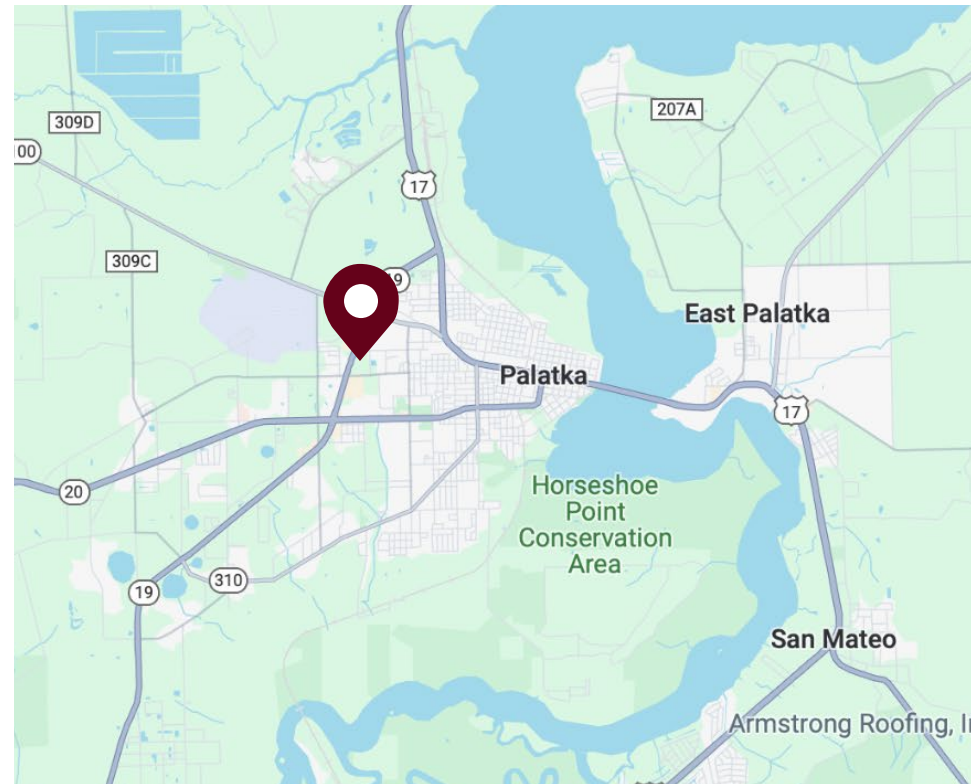


LEASING INFORMATION

An exciting opportunity awaits to lease 14,630 SF of premium commercial space in Maple Plaza, a vibrant shopping center anchored by Harbor Freight and Staples, in Palatka, FL.

This prime location features two prominent monument signs and offers multiple access points, ensuring high visibility and ease of access for both customers and businesses. Maple Plaza is surrounded by a diverse array of retailers, including Lowe's, Home Depot, Big Lots, Roses, Tractor Supply, Bailey's Fitness, Publix, Advanced Auto Parts, and more, creating a bustling retail environment.

Strategically situated at the intersection of heavily trafficked State Road 19 and Weaver Road, this commercial space is ideal for businesses looking to capitalize on the steady flow of potential customers in a thriving retail hub.



LEASING SUMMARY

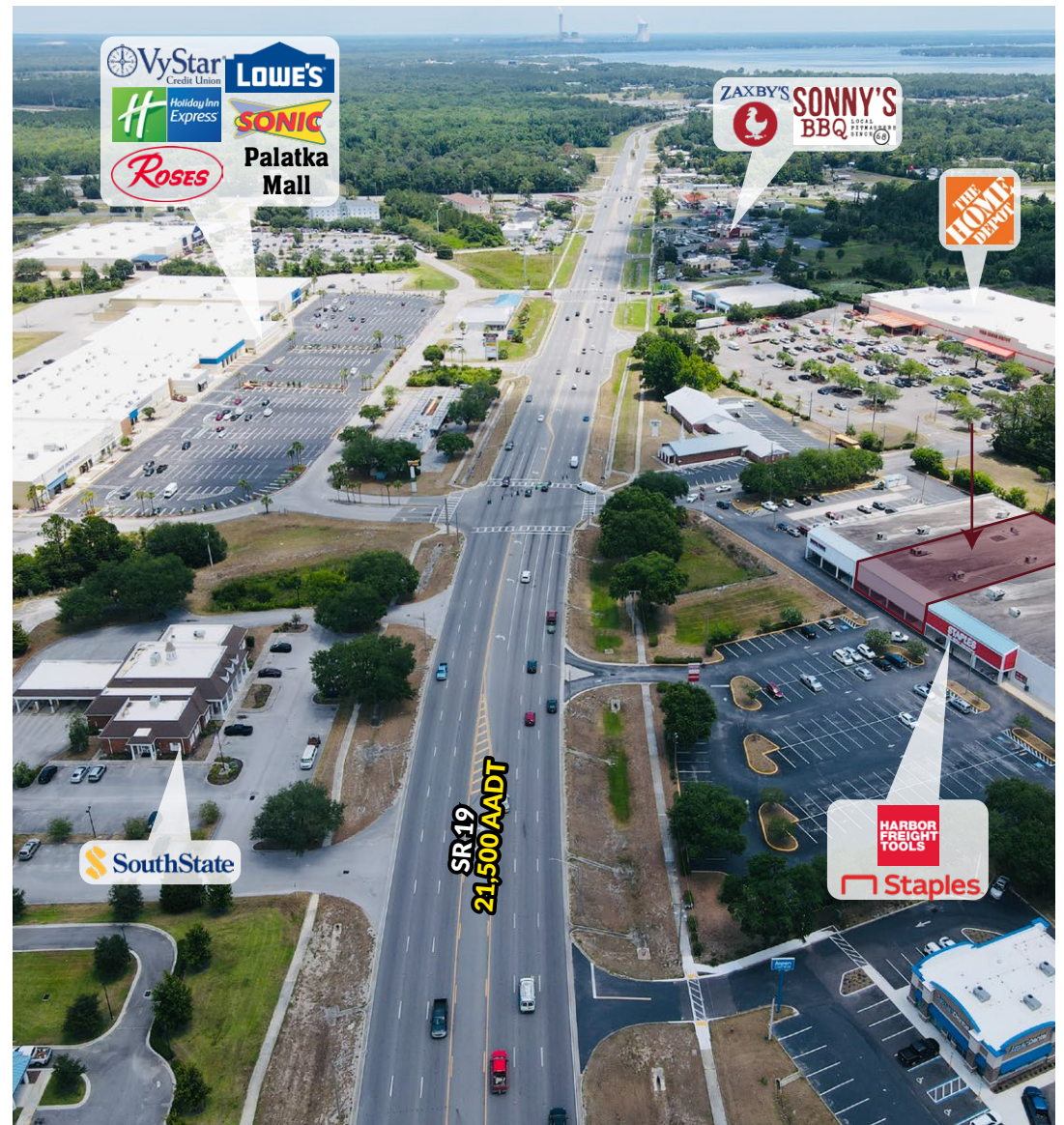
Address:	327-333 SR 19, Palatka, FL 32177 - Unit 2
Size:	14,630 SF
Lease Rate:	\$9/SF
NNN:	\$1.61/SF
Year Built:	1995
Frontage:	553' on SR 19 (with 1 curb cut) 283' on Weaver Rd
Ceiling height:	20 feet
Space Dimensions:	77 feet x 190 feet
Parking:	+/- 200 paved parking spaces
County:	Putnam County
Monument Signage:	Two (2) monument signs

327-333 State Road 19 | Palatka, FL 32177

KAYLA DEGUZMAN
D - 904.302.6930
M - 904.208.1168
kayla@cantrellmorgan.com



EXTERIOR PHOTOS

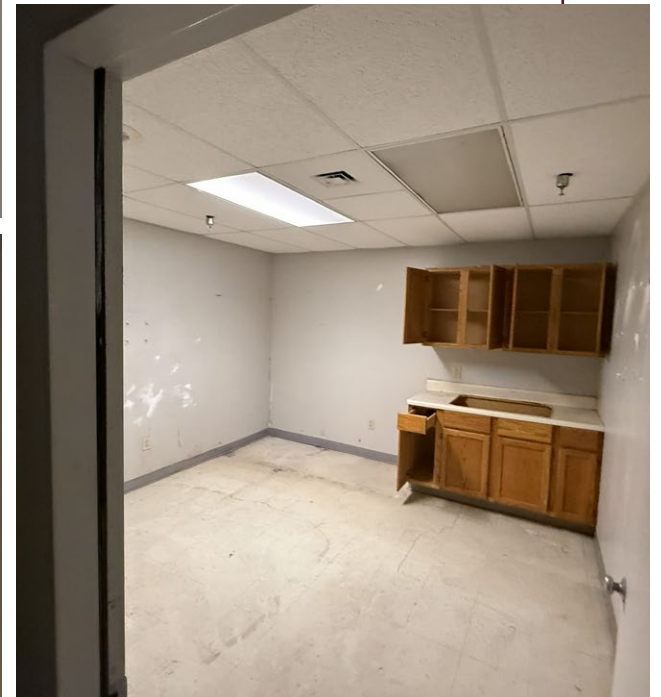
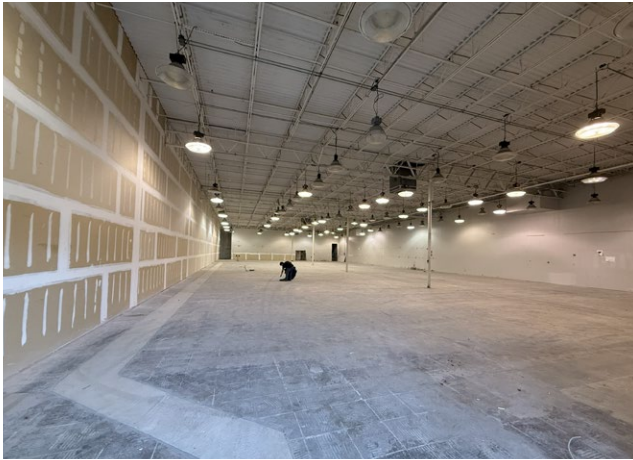


327-333 State Road 19 | Palatka, FL 32177

KAYLA DEGUZMAN
D - 904.302.6930
M - 904.208.1168
kayla@cantrellmorgan.com



INTERIOR PHOTOS

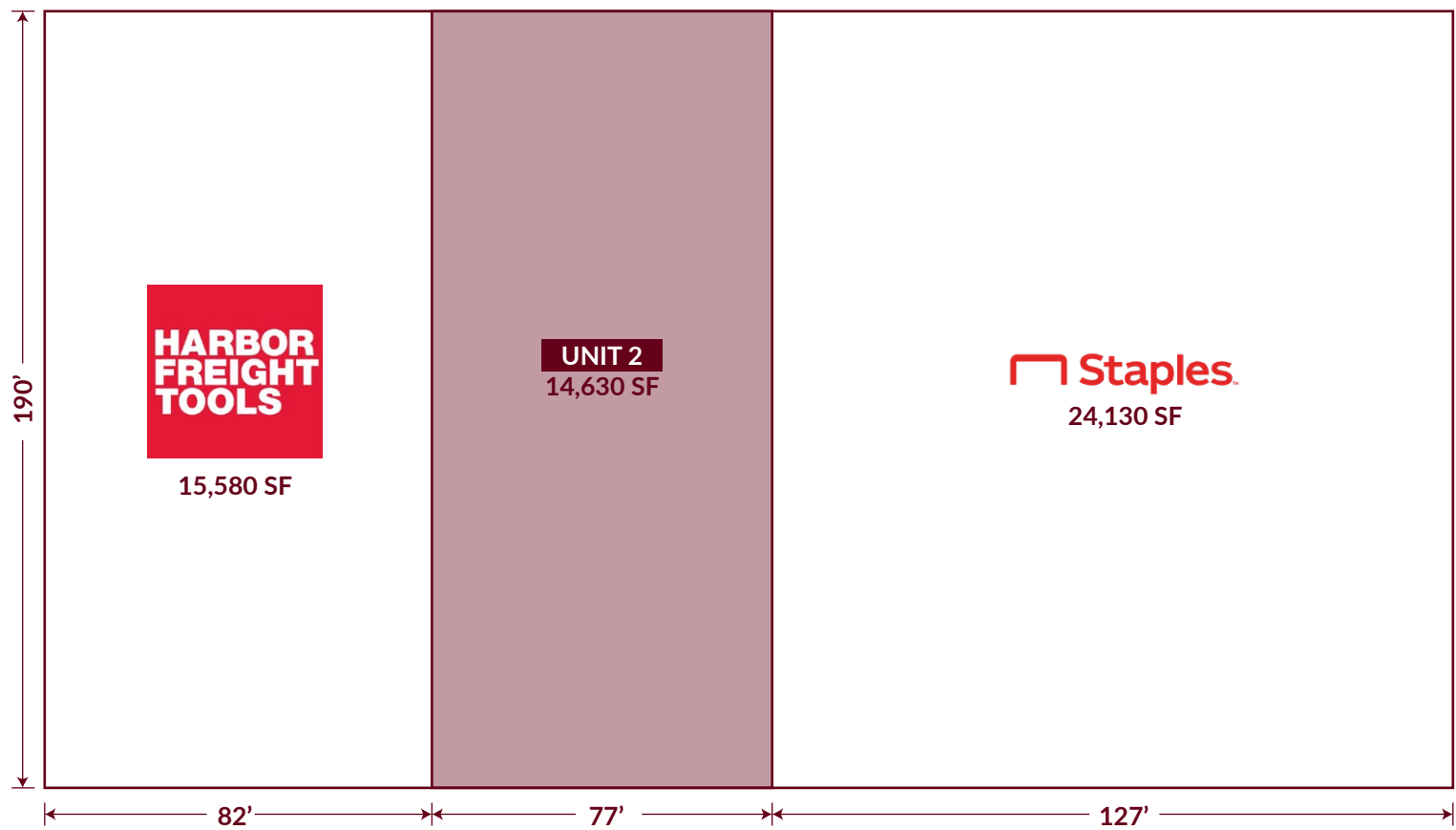


327-333 State Road 19 | Palatka, FL 32177

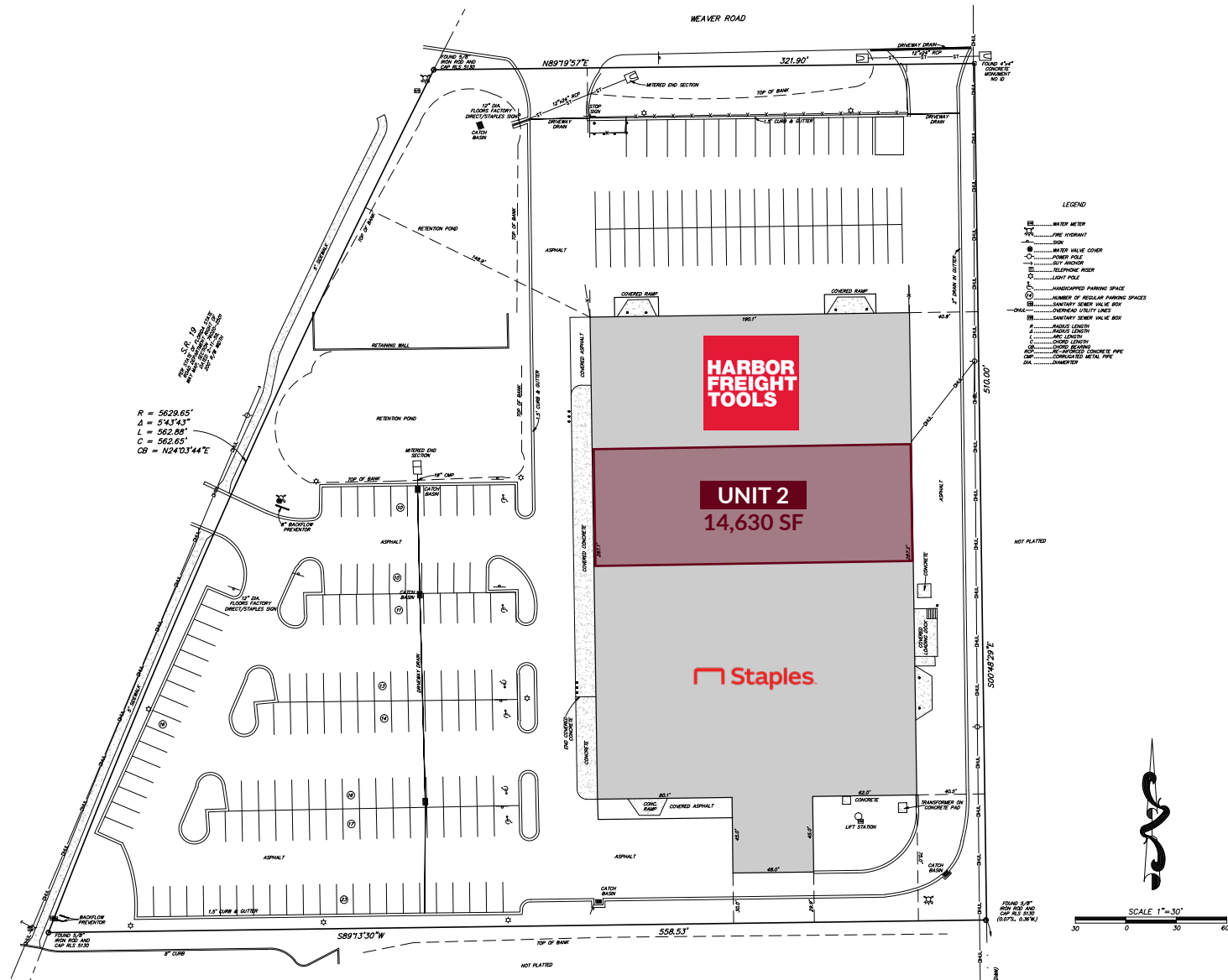
KAYLA DEGUZMAN
D - 904.302.6930
M - 904.208.1168
kayla@cantrellmorgan.com



FLOOR PLAN



SITE PLAN



327-333 State Road 19 | Palatka, FL 32177

KAYLA DEGUZMAN
D - 904.302.6930
M - 904.208.1168
kayla@cantrellmorgan.com



SURROUNDING AREA



327-333 State Road 19 | Palatka, FL 32177

KAYLA DEGUZMAN
D - 904.302.6930
M - 904.208.1168
kayla@cantrellmorgan.com

