

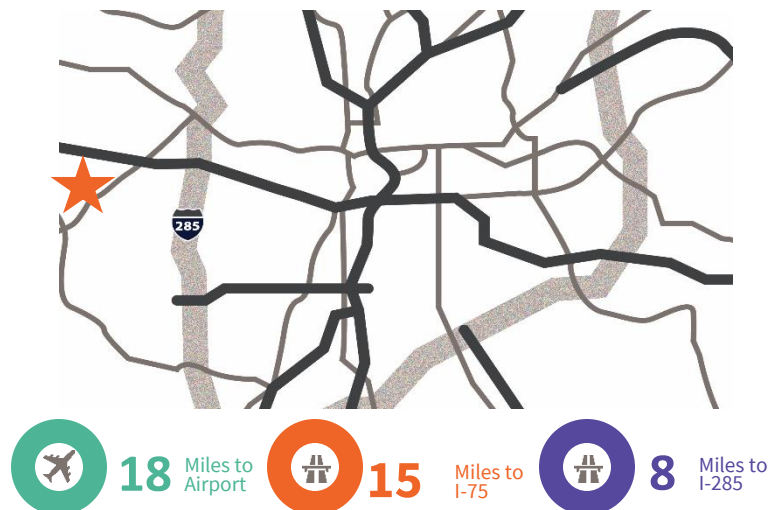


5100 Tulane Drive, Suite B, Atlanta, GA

Opportunity

- 51,435 sf available
- 1,500 sf office space
- 77,274 total building size
- 22' clear height
- 104' Bldg. Depth
- 52'8 x 40'2 bay size
- Doors – 6 (8'x10') DH, 1 (14'x16') DI
- 400 amps @ 110/208v
- LED lighting
- Sprinklered

Location



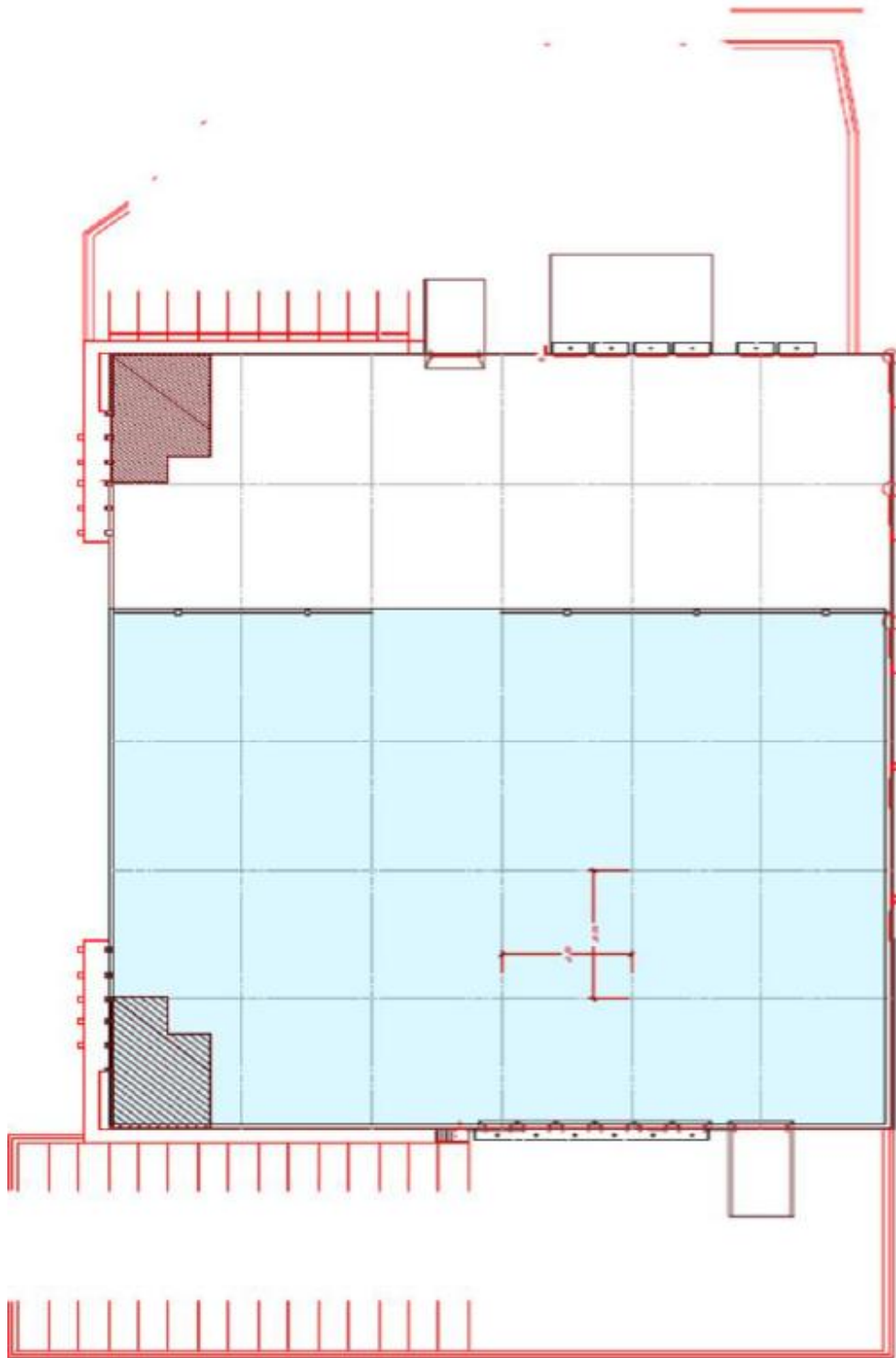
**For further
information**

Bruce Logue
Principal
+1 770 916 6150

avisonyoung.com

Industrial For Lease

5100 Tulane Drive, Ste B, Atlanta, GA



For further information



Bruce Logue
Principal
+1 770 916 6150
bruce.logue@avisonyoung.com

Owned by:

