

ALISO VIEJO, CALIFORNIA



JOURNEY

BUILDING A

NEWMARK

FOR LEASE

18 Journey is a 10,000 -square-foot building located within walking distance from Aliso Viejo Town Center. Tenants of the building will enjoy the newly renovated common areas and extensive glass lining. The building is serviced by a free surface parking lot for easy access. Easy access to the San Joaquin Transportation Corridor (73) and Santa Ana Freeway (I-5) is located nearby. Building top signage is also available.

HIGHLIGHTS



\$2.45/SF FSG



**TWO-STORY
BUILDING**



**RENOVATED
COMMON AREAS**



**BUILDING TOP
SIGNAGE**



JOURNEY

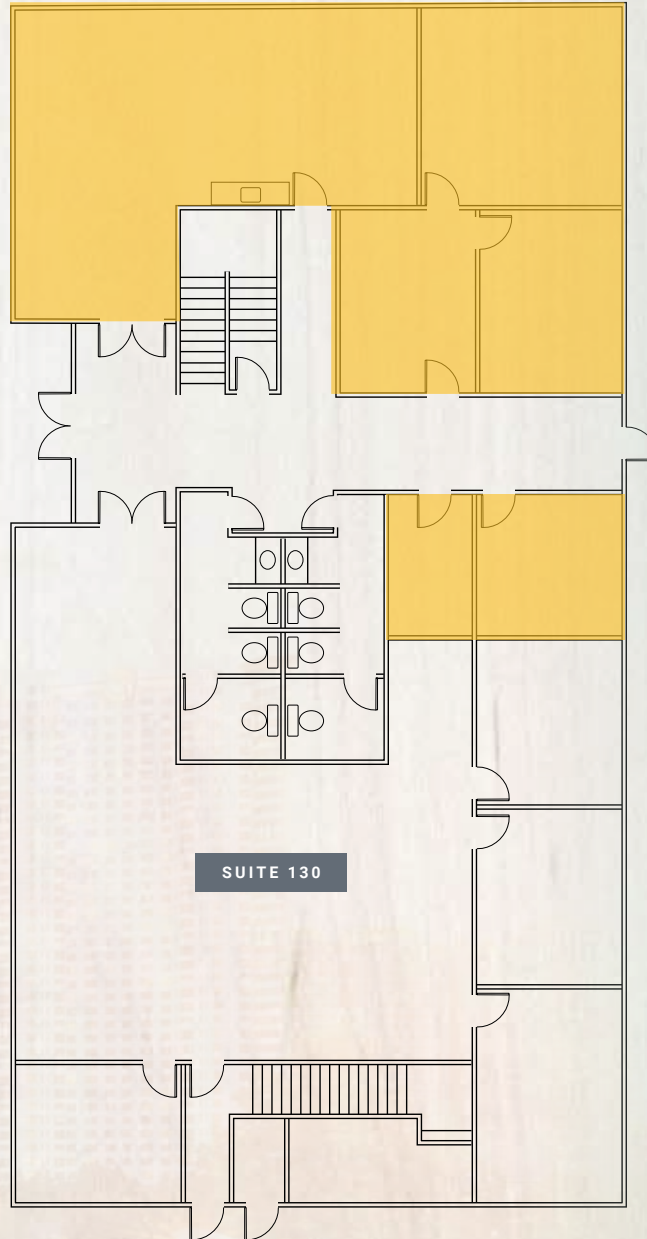
JOURNEY

SUITE 130

1,982 RSF



Click here
for video tour



NEARBY AMENITIES



Richard P. Sung

Managing Director

t 949-608-2178

m 408-205-3412

richard.sung@nrmk.com

CA RE Lic. #01953211

FOR LEASE

ALISO VIEJO, CALIFORNIA



18401 Von Karman Avenue
Suite 150
Irvine, CA 92612

CORPORATE LICENSE #01355491

The distributor of this communication is performing acts for which a real estate license is required. The information contained herein has been obtained from sources deemed reliable but has not been verified and no guarantee, warranty or representation, either express or implied, is made with respect to such information. Terms of sale or lease and availability are subject to change or withdrawal without notice.

NEWMARK

nrmk.com