

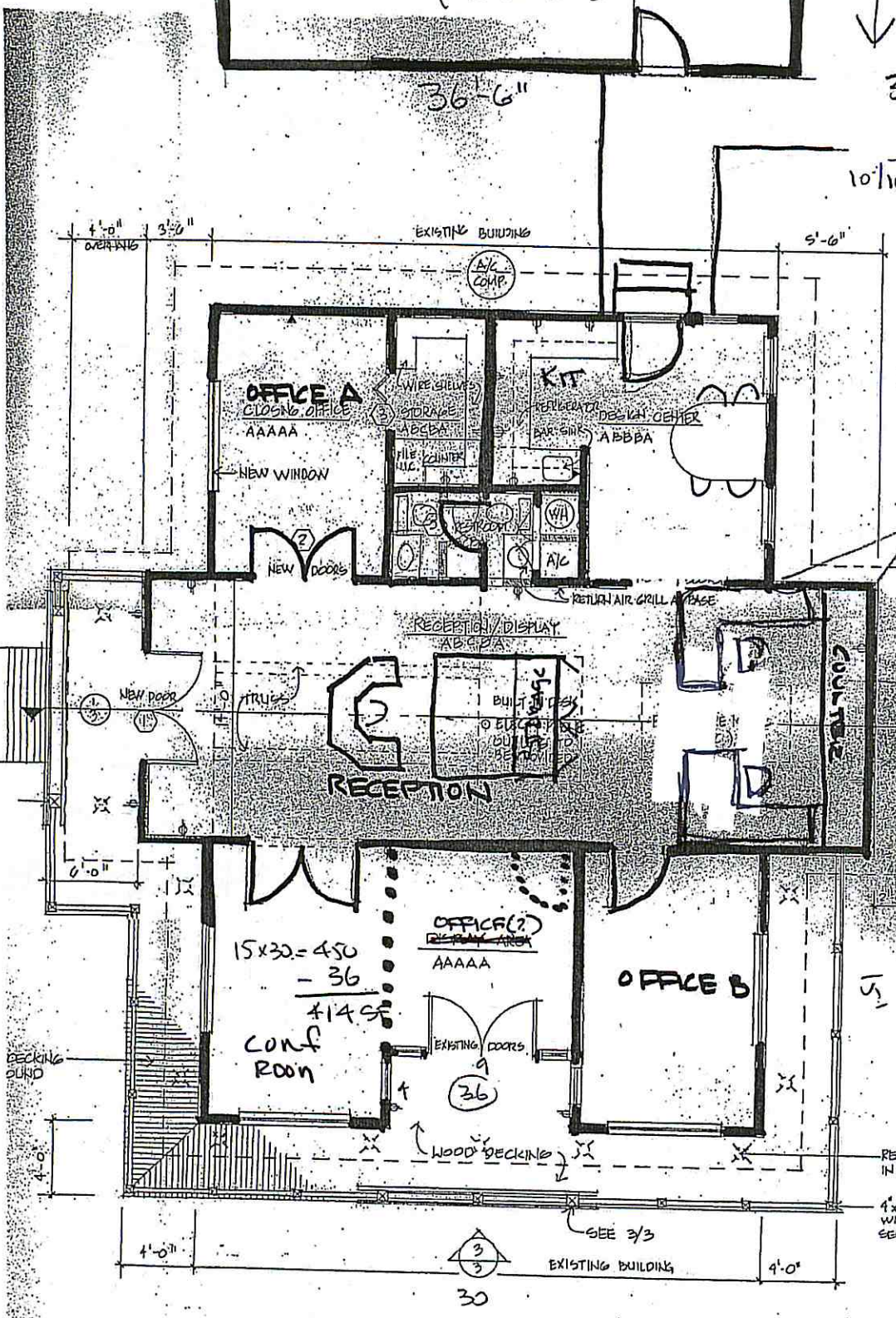
24'-6"

$36.5 \times 28.5 = 1040 \text{ SF}$

$10/1000 = 11 \text{ spaces}$

T-10 (SIDE)

ST. ANDREWS BLVD (SIDE)



$30 \times 15 = 450$

$40 \times 14 = 560 \text{ SF}$

TO PARKING

BECKING BUILD

RECESSED CAN FIXTURES IN SOFFIT

4x4 POST WITH RAILING SEE 3/3

450 SF  
+ 560 SF  
+ 414 SF

1 FLOOR PLAN  
2 BELLE TERRE LAND  
669 BELLE TERRE BLVD

7.10.2013 4/1000 SF  
1/4" = 1'-0"

1424 SF  
6 SPACES  
TO T-10

TO AIRLINE

3.6.18