

4257 24TH AVE W

4257 24th Avenue W, Seattle, WA 98199



PROFESSIONAL OFFICE / WORKSHOP SPACE FOR LEASE

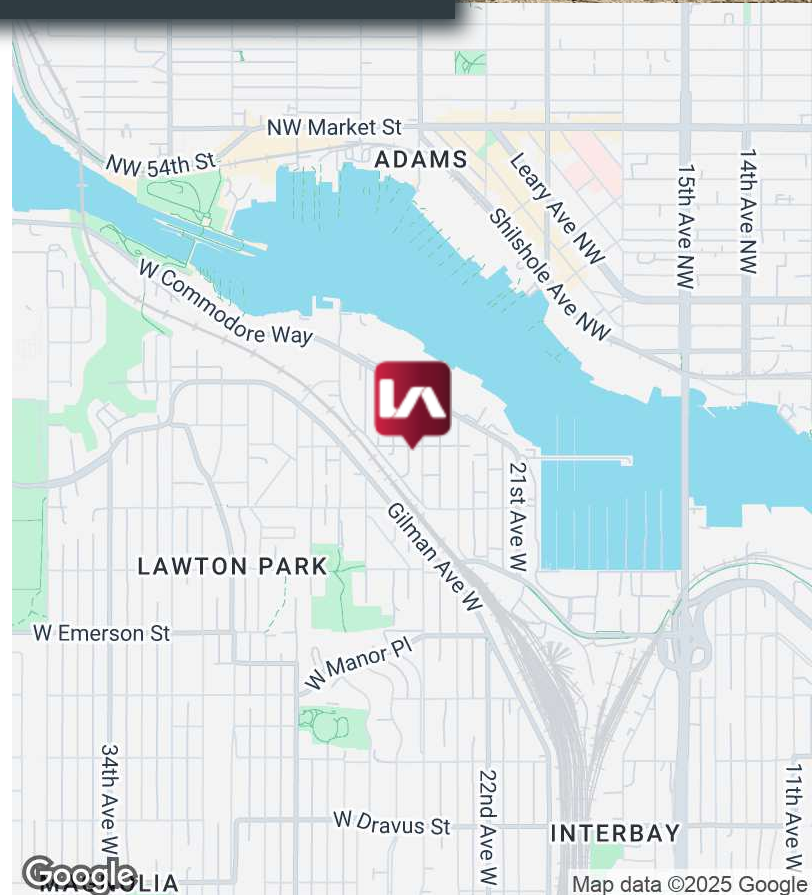
LISTING INFORMATION

SUITE 101:	+/- 1,300 SF
LEASE RATE:	\$1,800/Month (Gross)

COMMENTS

4257 24th Ave W represents an exceptional opportunity for professional, creative, and flex office use, providing affordable space with mid-century charm in the heart of Fisherman's Terminal.

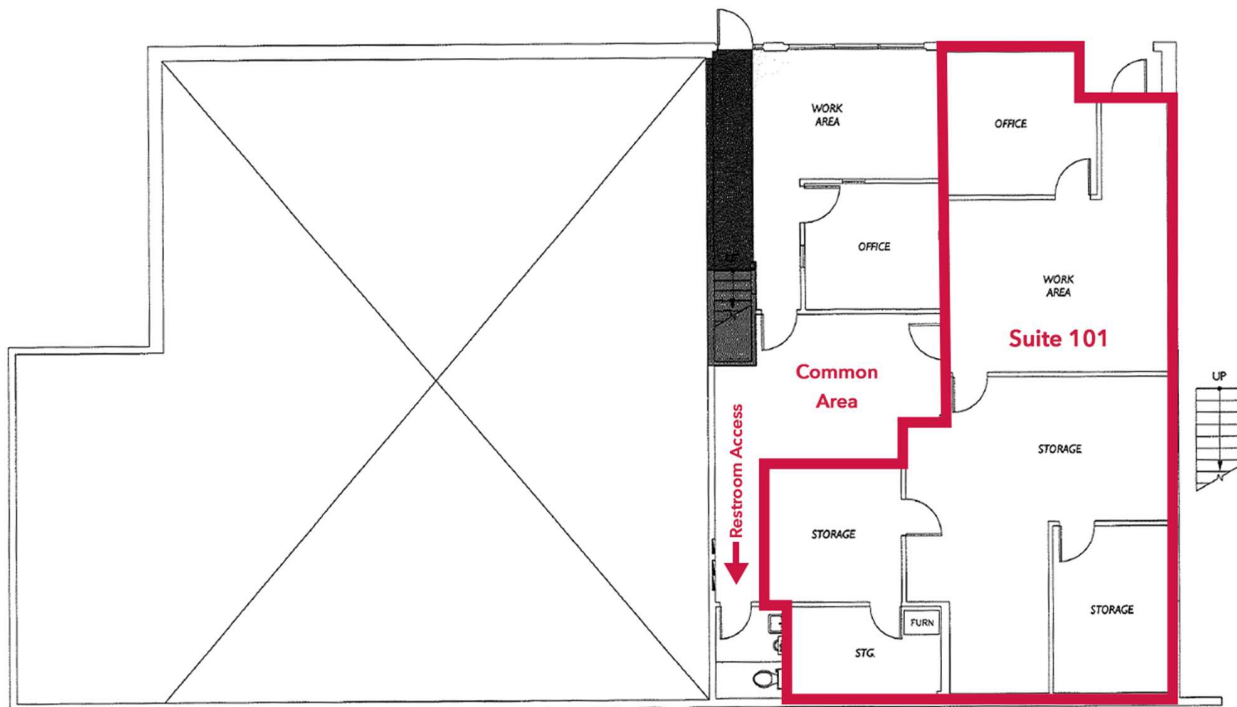
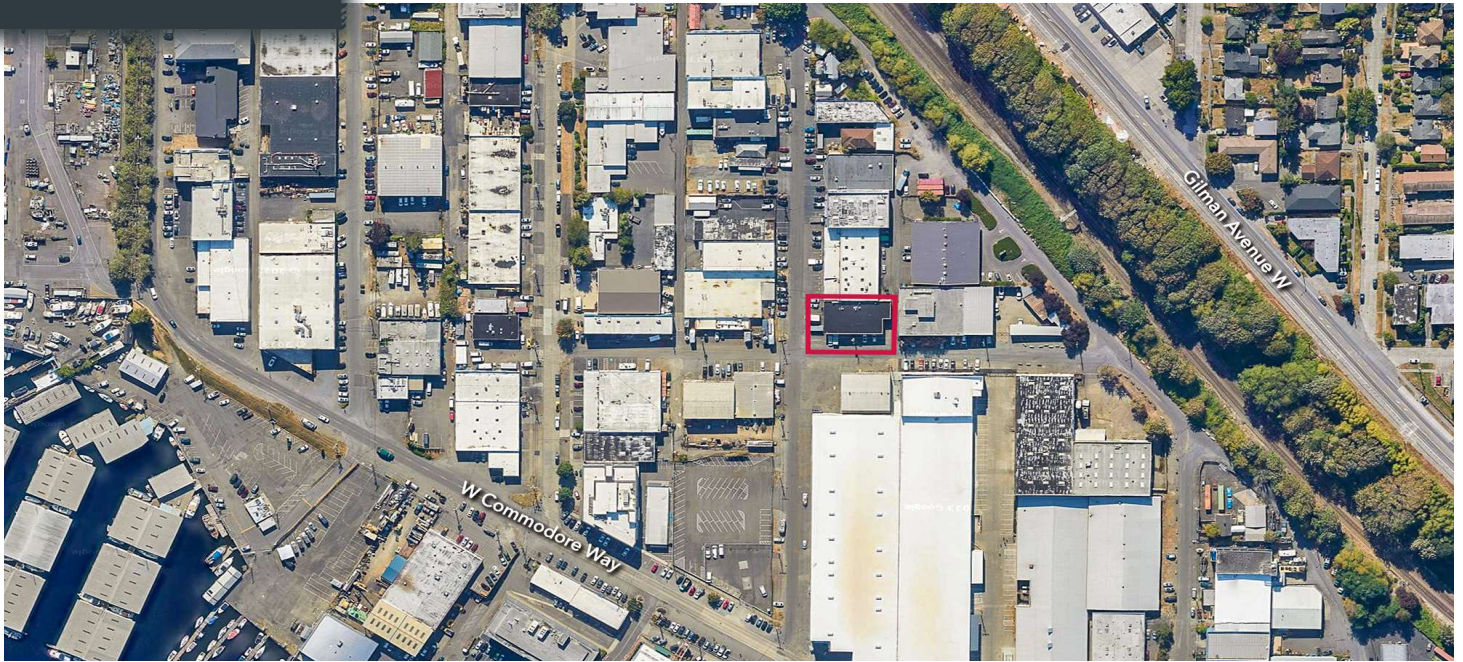
The property is located at the corner of West Jameson and 24th Ave West with views of Fisherman's Terminal and Ballard from the 2nd level.



4257 24TH AVE W

4257 24th Avenue W, Seattle, WA 98199

FLOOR PLAN



CONTACT

Stren Lea

stren@lee-associates.com

206.773.2672

We obtained the information above from sources we believe to be reliable. However, we have not verified its accuracy and make no guarantee, warranty or representation about it. It is submitted subject to the possibility of errors, omissions, change of price, rental or other conditions, prior sale, lease or financing, or withdrawal without notice. We include projections, opinions, assumptions or estimates for example only, and they may not represent current or future performance of the property. You and your tax and legal advisors should conduct your own investigation of the property and transaction.

4257 24TH AVE W

4257 24th Avenue W, Seattle, WA 98199

PHOTOS



CONTACT

Stren Lea

stren@lee-associates.com

206.773.2672

We obtained the information above from sources we believe to be reliable. However, we have not verified its accuracy and make no guarantee, warranty or representation about it. It is submitted subject to the possibility of errors, omissions, change of price, rental or other conditions, prior sale, lease or financing, or withdrawal without notice. We include projections, opinions, assumptions or estimates for example only, and they may not represent current or future performance of the property. You and your tax and legal advisors should conduct your own investigation of the property and transaction.