

PROPERTY DETAILS

- Price: Contact Broker
- Acreage: +/-10.85
- Zoning: N2-B
- PIDS: 14308112, 14308110, 14308111, 14308109

PROPERTY HIGHLIGHTS

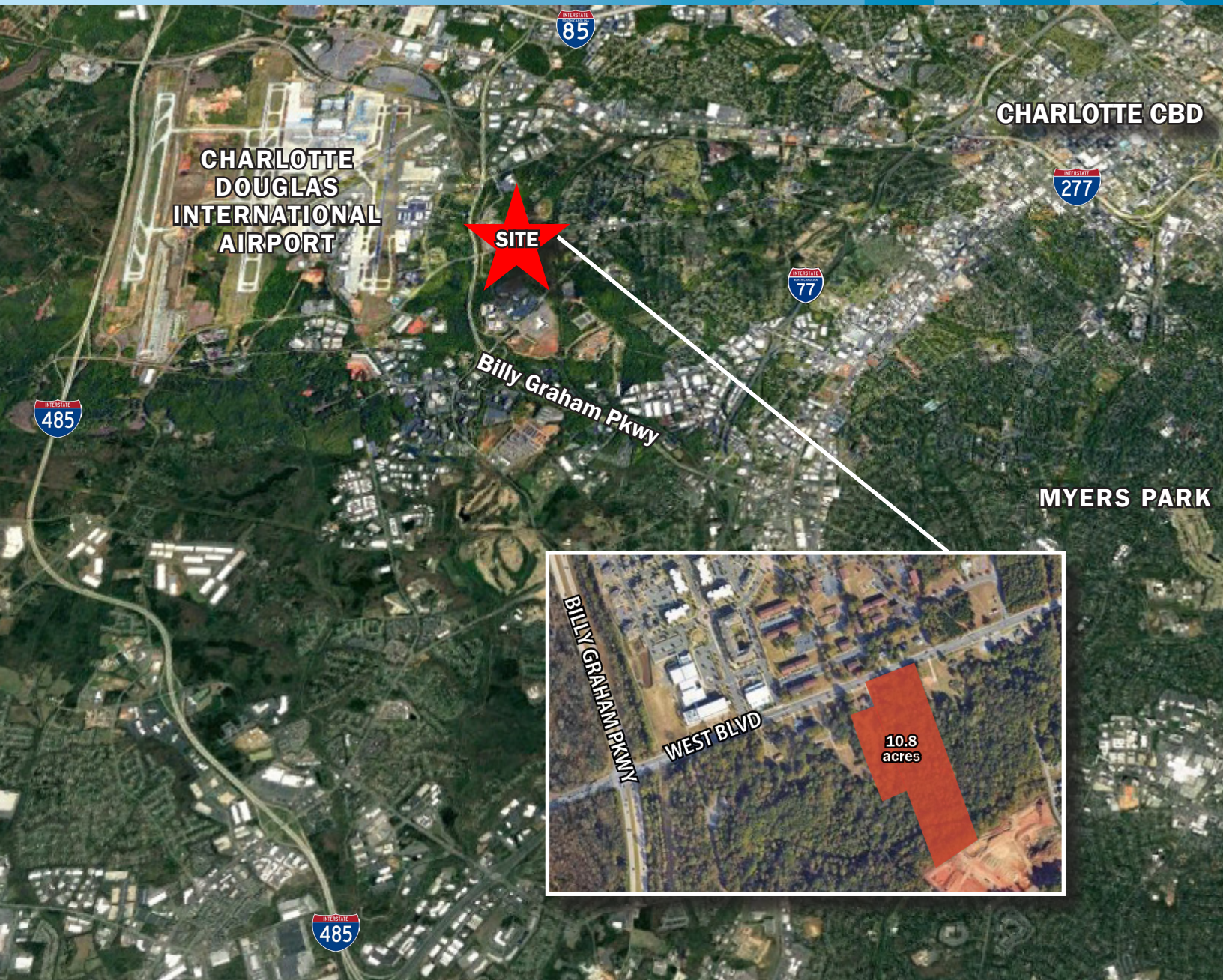
- Excellent Surface Park Apartment Development Site
- Located in Opportunity Zone Charlotte Census Tract 39.03
- Substantial Frontage on West Blvd. with Multiple Curb Cuts
- Zoning should allow for four (4) story stick built MF Product
- 2.5 miles to I-77, 3 miles to Uptown Charlotte & South End
- Close proximity to Charlotte Douglas International Airport and Billy Graham Parkway

BROKER CONTACT

SHAWN GEORGE | 2049 Birchside Drive | Charlotte, NC 28205 | 704.503.9608 | queencitycommercial@gmail.com
www.QueenCityCRE.com

10+ ACRE CHARLOTTE MULTI-FAMILY ZONED LAND FOR SALE

3209-3225 WEST BLVD
CHARLOTTE, NORTH CAROLINA 28208



	1 MILE	3 MILES	5 MILES
TOTAL POPULATION	5,547	68,504	185,659
AVERAGE HH INCOME	\$54,087	\$68,438	\$92,713
MEDIAN HH INCOME	\$40,039	\$55,350	\$66,476
BUSINESS ESTABLISHMENTS	466	4,535	13,743
DAYTIME EMPLOYMENT	11,483	59,547	193,505



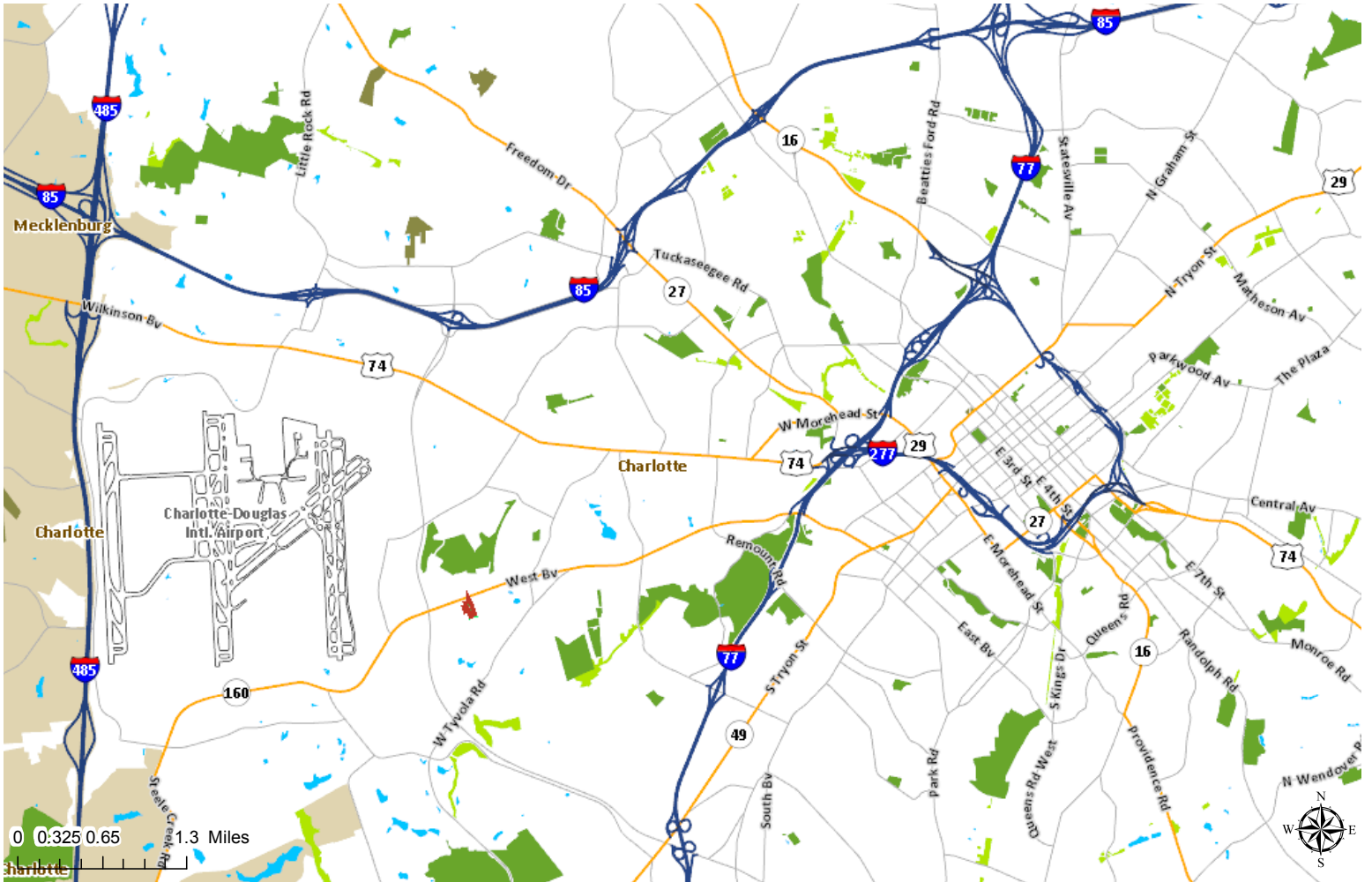
SHAWN GEORGE | 2049 Birchside Drive | Charlotte, NC 28205 | 704.503.9608 |
queencitycommercial@gmail.com | www.QueenCityCRE.com

"The information contained herein was obtained from sources believed reliable, however, no guarantees, warranties, or representations have been made as to the completeness or accuracy thereof. No liability assumed for error or omissions."

10+ ACRE CHARLOTTE MULTI-FAMILY ZONED LAND FOR SALE

3209-3225 WEST BLVD
CHARLOTTE, NORTH CAROLINA 28208

WEST BLVD LAND ASSEMBLAGE - 2.92 ACRES ZONED R-22 MF



SHAWN GEORGE | 2049 Birchside Drive | Charlotte, NC 28205 | 704.503.9608 |
queencitycommercial@gmail.com | www.QueenCityCRE.com

"The information contained herein was obtained from sources believed reliable, however, no guarantees, warranties, or representations have been made as to the completeness or accuracy thereof. No liability assumed for error or omissions."