

# For Lease

# 625 Northeast 122nd Street

## MARKET CENTER WAREHOUSE



### Property Description

A newly constructed 52,500 sq ft industrial warehouse building located within the successful Market Center development located at 122nd and Broadway Extension.

### Offering Summary

Lease Rate:	\$10.00 SF/yr (NNN)
Available SF:	15,000 - 52,500 SF
Building Size:	52,500 SF

### Property Highlights

PUD/ Zoned I-1	150' Bay Depth	Grade, Dock, Pony Access	10'-14' OH Doors
95 Parks	28' Clear Height	65' Trailer Turning Radius	TPO Roof
Exceptional Interstate Access	50' Column Spacing	ESFR Fire Suppression	Monitored Fire Alarm

**RICK PRITCHETT, CCIM**

405.605.0831

rick@precorreality.com



**PRECORRUFFIN**

PRECOR RUFFIN | 825 N. BROADWAY, SUITE 300, OKLAHOMA CITY, OK 73102 | 405.605.0825 | PRECORRUFFIN.COM

The information above has been obtained from sources believed reliable. While we do not doubt its accuracy, PrecorRuffin, LLC has not verified it and makes no guarantee, warranty or representation about it. It is your responsibility to independently confirm its accuracy.



For Lease

625 Northeast 122nd Street

MARKET CENTER WAREHOUSE



**RICK PRITCHETT, CCIM**

405.605.0831

rick@precorreality.com



**PRECORRUFFIN**

PRECOR RUFFIN | 825 N. BROADWAY, SUITE 300, OKLAHOMA CITY, OK 73102 | 405.605.0825 | PRECORRUFFIN.COM

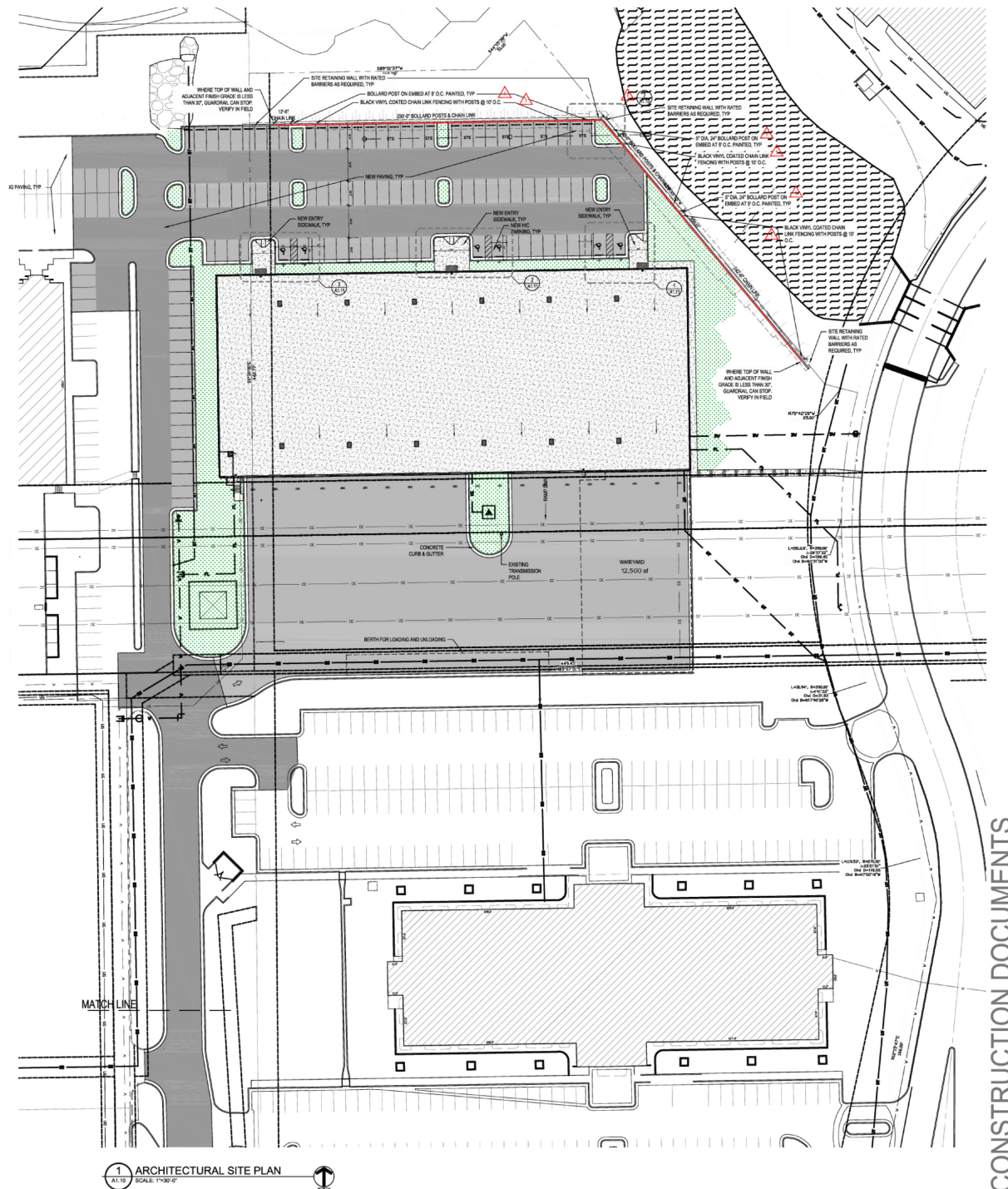
The information above has been obtained from sources believed reliable. While we do not doubt its accuracy, PrecorRuffin, LLC has not verified it and makes no guarantee, warranty or representation about it. It is your responsibility to independently confirm its accuracy.



# For Lease

# 625 Northeast 122nd Street

## MARKET CENTER WAREHOUSE



CONSTRUCTION DOCUMENTS

**RICK PRITCHETT, CCIM**

405.605.0831

rick@precorrealty.com



# PRECORRUFFIN

PRECOR RUFFIN | 825 N. BROADWAY, SUITE 300, OKLAHOMA CITY, OK 73102 | 405.605.0825 | PRECORRUFFIN.COM

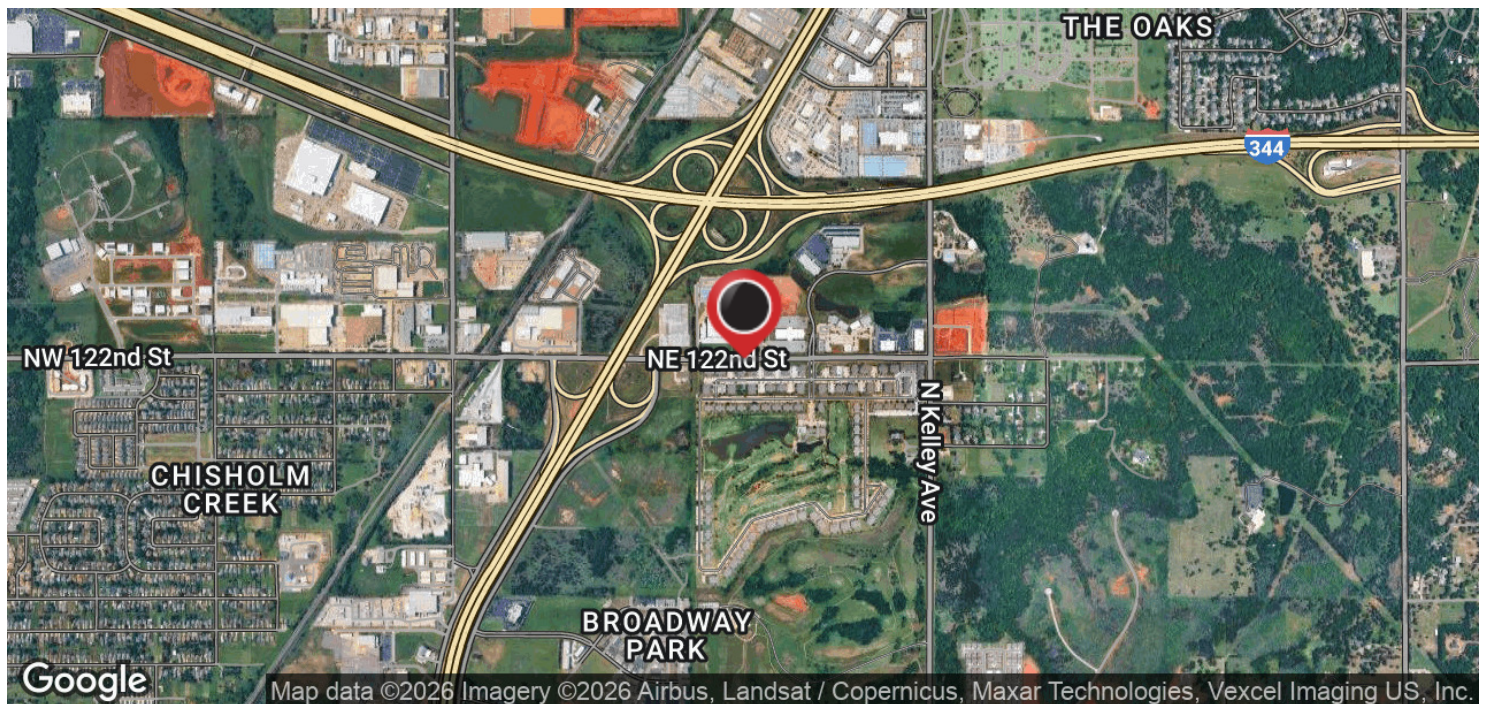
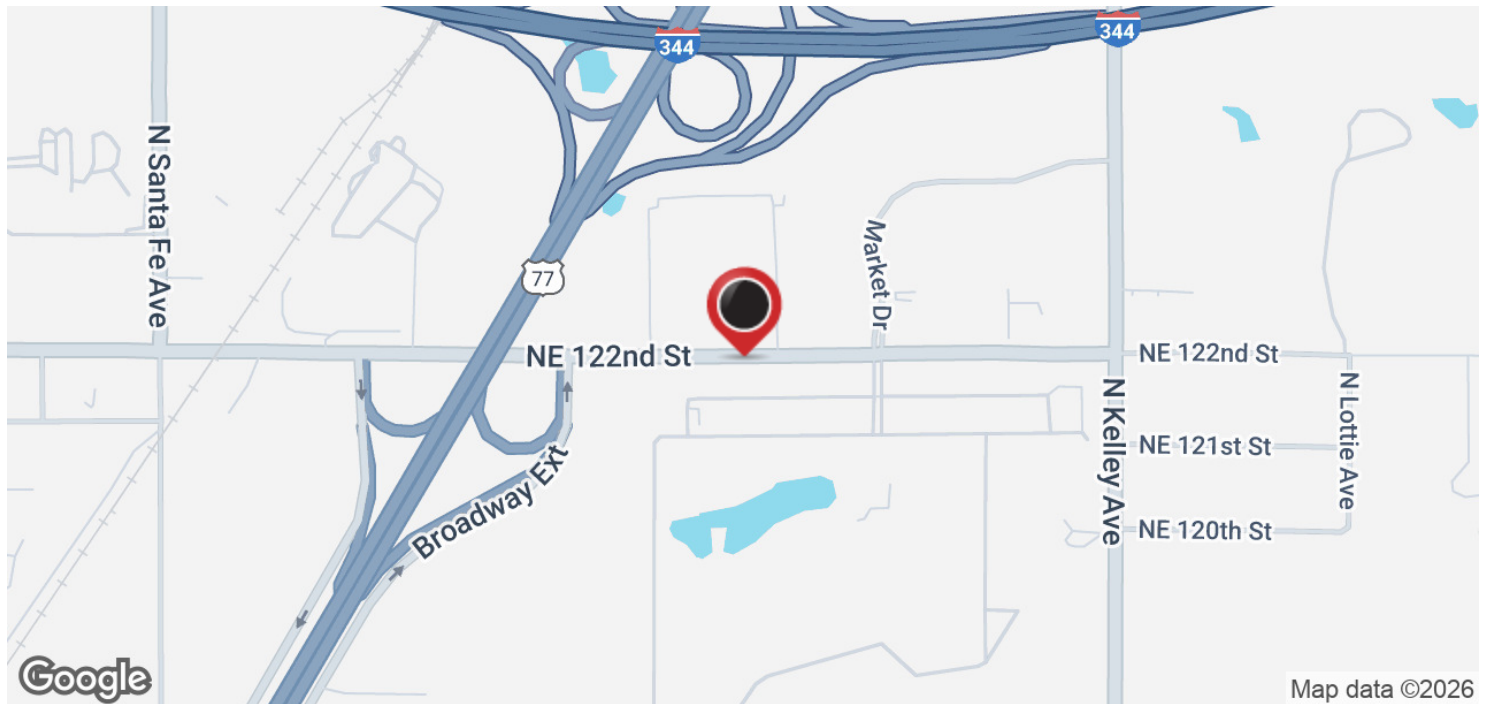
The information above has been obtained from sources believed reliable. While we do not doubt its accuracy, PrecorRuffin, LLC has not verified it and makes no guarantee, warranty or representation about it. It is your responsibility to independently confirm its accuracy.



For Lease

625 Northeast 122nd Street

MARKET CENTER WAREHOUSE



**RICK PRITCHETT, CCIM**

405.605.0831

rick@precorreality.com



**PRECORRUFFIN**

PRECOR RUFFIN | 825 N. BROADWAY, SUITE 300, OKLAHOMA CITY, OK 73102 | 405.605.0825 | PRECORRUFFIN.COM

The information above has been obtained from sources believed reliable. While we do not doubt its accuracy, PrecorRuffin, LLC has not verified it and makes no guarantee, warranty or representation about it. It is your responsibility to independently confirm its accuracy.