

1,760 SF FLEX SPACE FOR LEASE

1607 W ACORN DR

ROGERS, ARKANSAS 72758

1607
1,760 SF



PALMER HAYS, SIOR MEMBER ASSOCIATE
INDUSTRIAL & LAND SPECIALIST
479.466.8499
PALMER@BENNETTCRE.COM

5512 WEST WALSH LN, #201, ROGERS, AR 72758 | 479.278.4040 | BENNETTCRE.COM

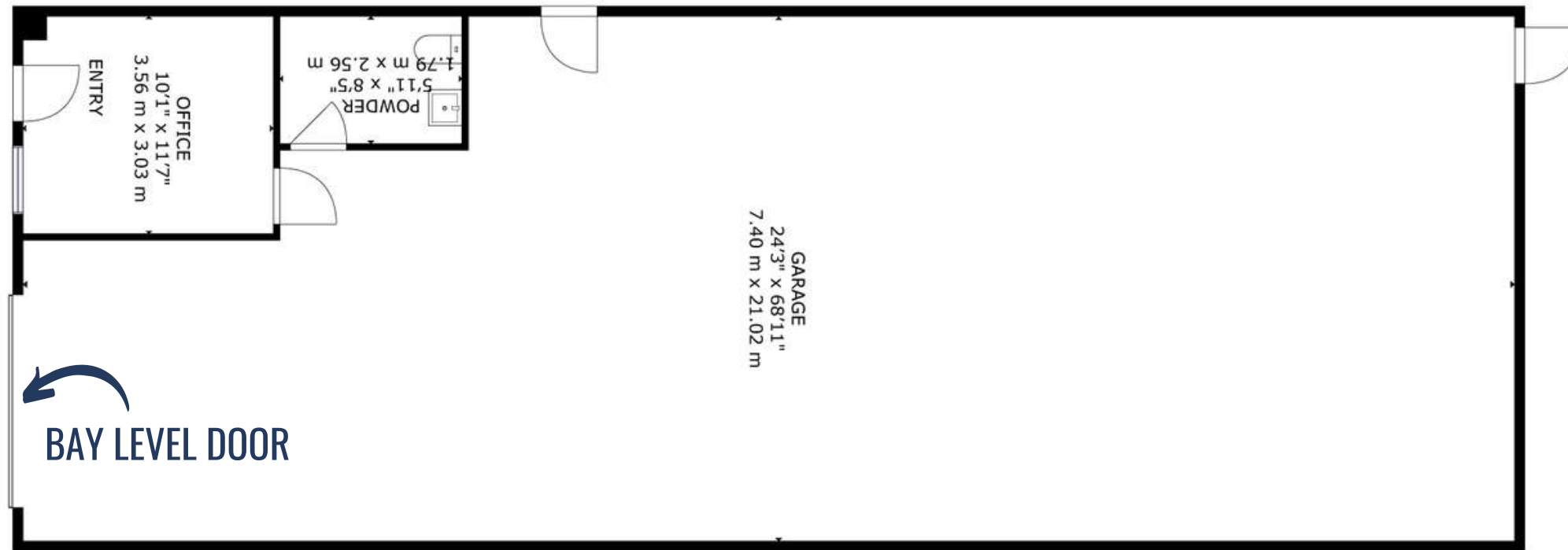
SITE OVERVIEW

ADDRESS	1607 W ACORN DR
CITY, STATE	ROGERS, AR 72758
AVAILABLE	1,760 SF
ASKING RENT	\$12.00 PSF NNN
BAY LEVEL DOOR	1 (10 x 10)

SITE HIGHLIGHTS

- + READY TO LEASE FLEX UNIT COMPLETE WITH ONE SMALL OFFICE & ONE HALF BATH
- + TWO MILES FROM INTERSTATE 49
- + EASY ACCESS TO MAJOR HIGHWAYS AND NEARBY AMENITIES

VIRTUAL TOUR LINK



PALMER HAYS, SIOR MEMBER ASSOCIATE
INDUSTRIAL & LAND SPECIALIST
479.466.8499
PALMER@BENNETTCRE.COM



PALMER HAYS, SIOR MEMBER ASSOCIATE
INDUSTRIAL & LAND SPECIALIST
479.466.8499
PALMER@BENNETTCRE.COM

1607 W ACORN DR, ROGERS, AR 72758

AERIAL VIEW



HUDSON RD - 31,000 VPD



DIXIELAND RD - 11,000 VPD

DIXIELAND RD - 11,000 VPD



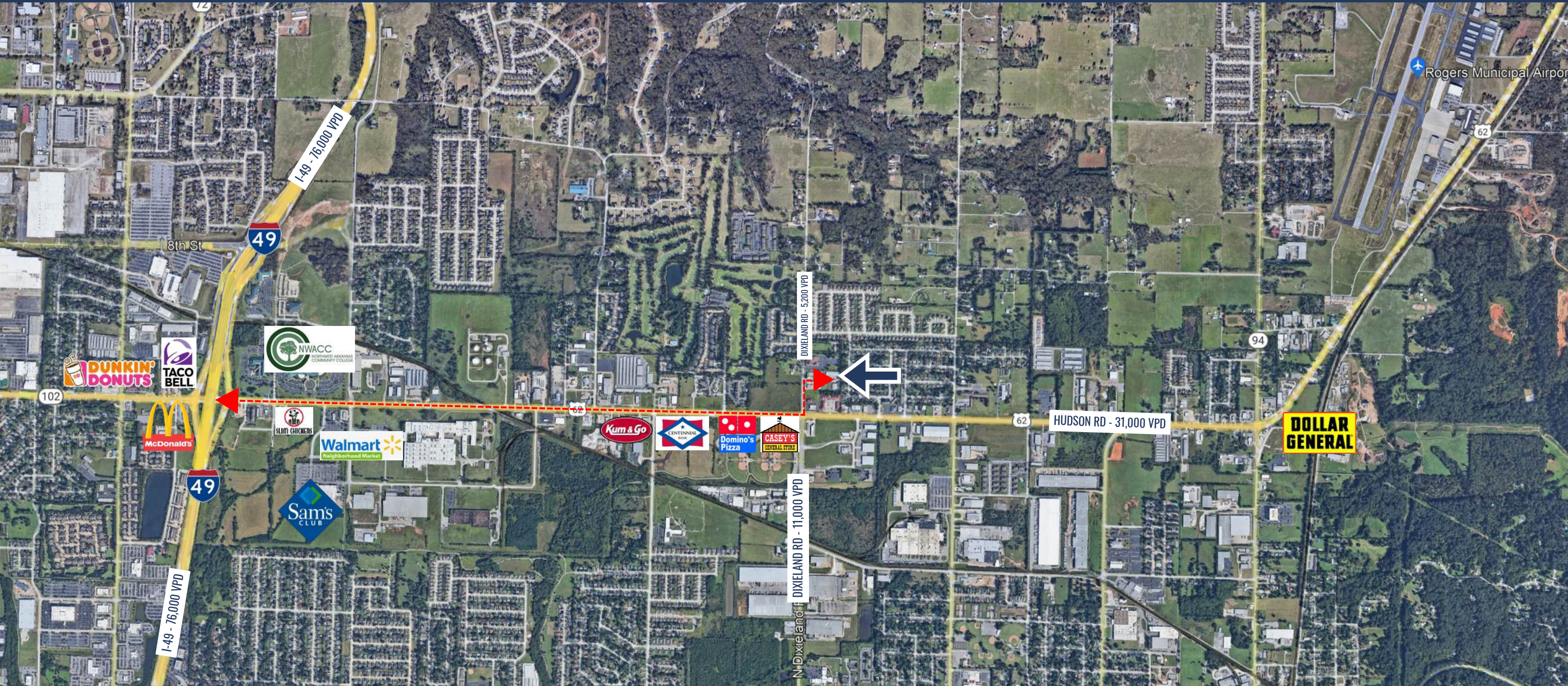
HUDSON RD - 31,000 VPD

1607
1,760 SF



PALMER HAYS, SIOR MEMBER ASSOCIATE
INDUSTRIAL & LAND SPECIALIST
479.466.8499
PALMER@BENNETTCRE.COM

5512 WEST WALSH LN, #201, ROGERS, AR 72758 | 479.278.4040 | BENNETTCRE.COM



INTERSTATE-49

2.2 MILES 6 MIN

WALMART HOME OFFICE

4.0 MILES 10 MIN

J.B. HUNT

11.2 MILES 18 MIN

HWY 71B

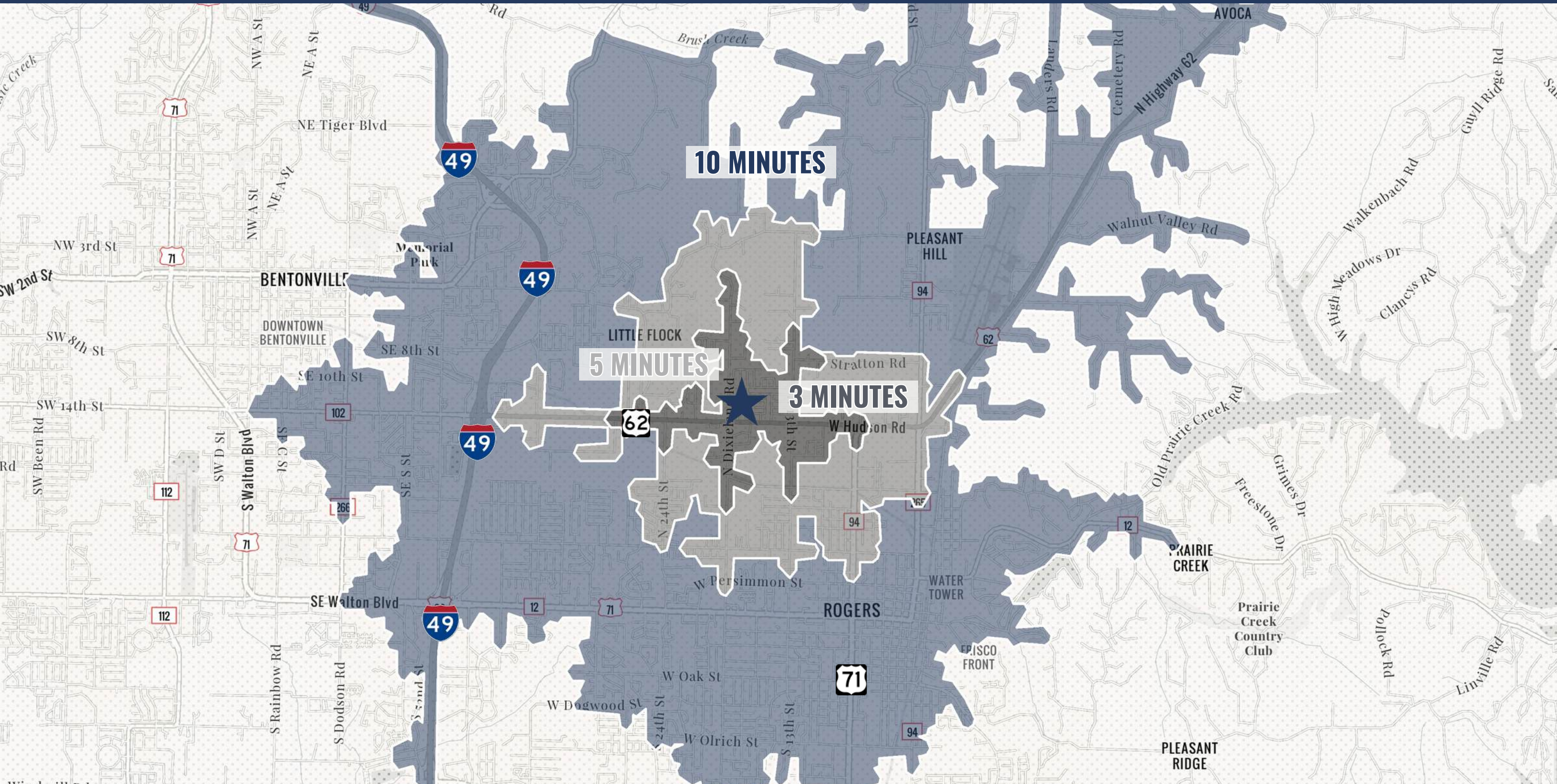
1.8 MILES 5 MIN



PALMER HAYS, SIOR MEMBER ASSOCIATE
INDUSTRIAL & LAND SPECIALIST
479.466.8499
PALMER@BENNETTCRE.COM

1607 W ACORN DR, ROGERS, AR 72758

DRIVE TIME MAP



PALMER HAYS, S.IOR MEMBER ASSOCIATE
INDUSTRIAL & LAND SPECIALIST
479.466.8499
PALMER@BENNETTCRE.COM

5512 WEST WALSH LN, #201, ROGERS, AR 72758 | 479.278.4040 | BENNETTCRE.COM



BENNETT

COMMERCIAL REAL ESTATE



PALMER HAYS

INDUSTRIAL & LAND SPECIALIST

479.466.8499

PALMER@BENNETTCRE.COM

5512 WEST WALSH LN, #201, ROGERS, AR 72758 | 479.278.4040 | BENNETTCRE.COM