

TURNKEY CLASS A SUBLEASE

Brand New Build-Out in Iconic Downtown Atlanta Tower



CARTER HILL

100 Peachtree St NW, Suite 2095,
Atlanta, GA 30303



SPACE PROFILE

Negotiable
Rate

2,810 SF
Total SF

March 31, 2030
Term

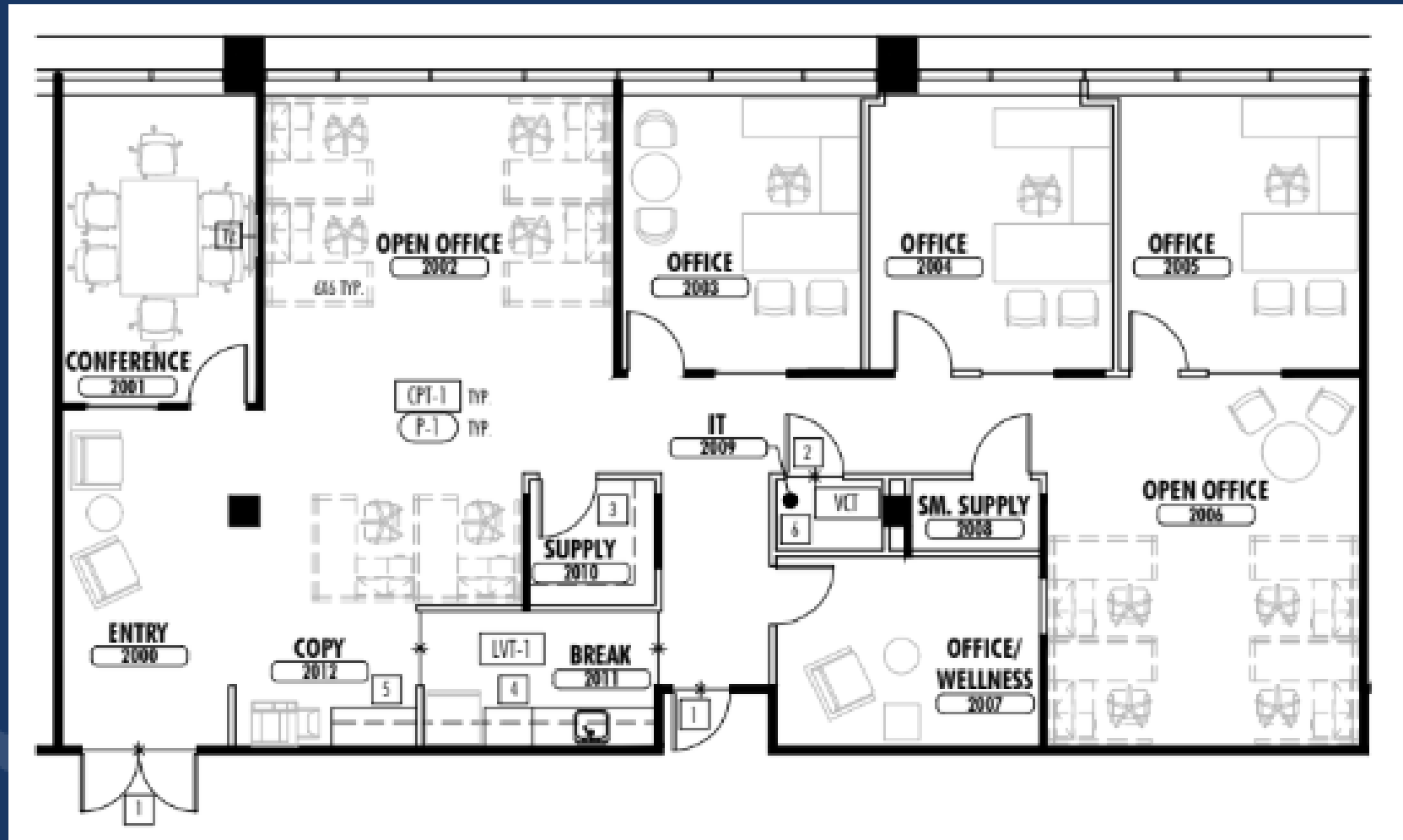
FOR SUBLEASE

Building Highlights:

- State-of-the-Art Fitness Center
- Dedicated Tenant Conference Facility
- Full Amenity Floor
- Direct MARTA Access
- 24/7 Security and Key Card Access
- Outdoor Plaza



Floorplan | Suite 2095 | 20th Floor | 2,810 SF

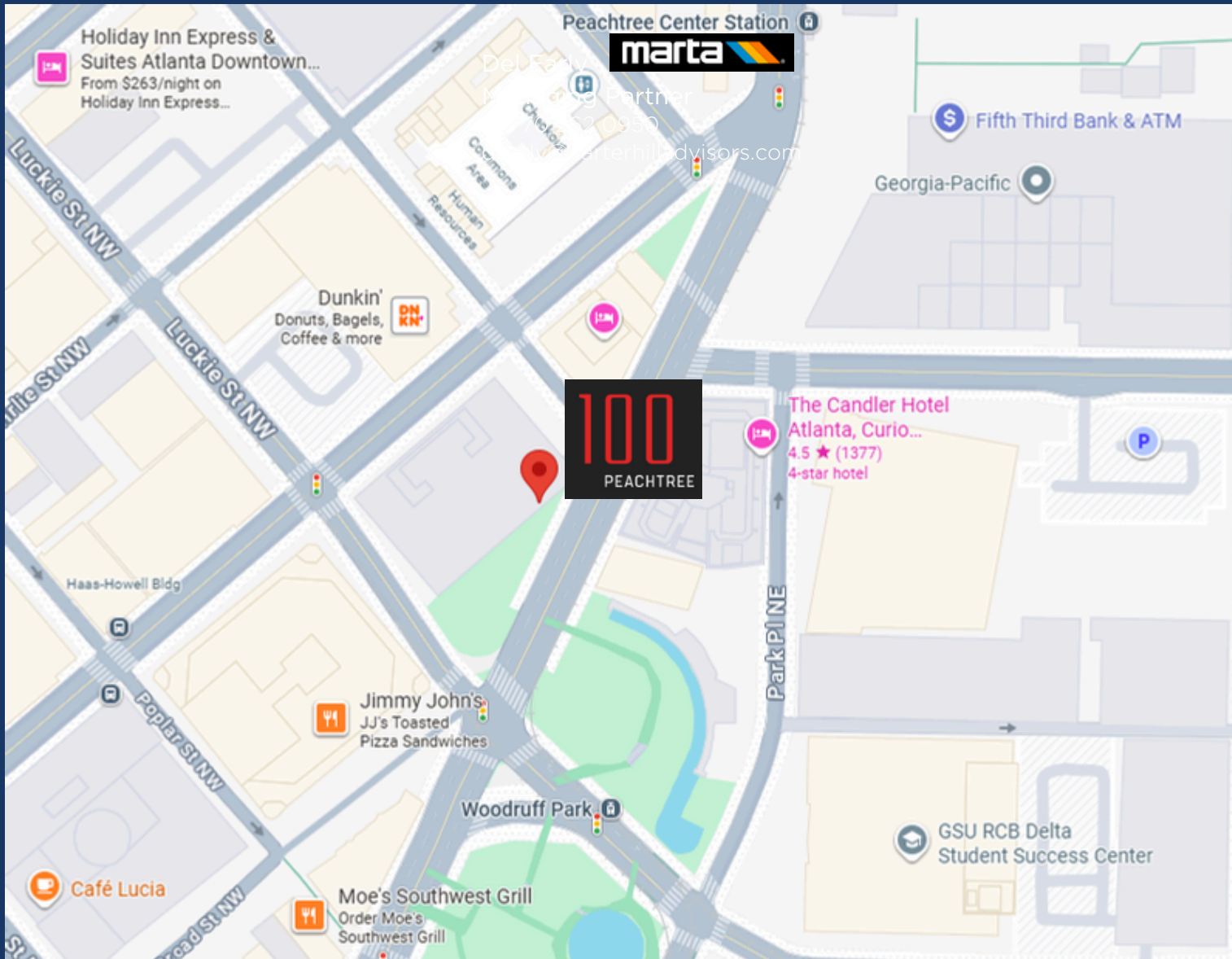


Space Highlights:

- High-Floor Views
- Abundant Natural Light
- Modern Break Room
- High-Floor Views
- Mix of Private Offices and Open Collaboration Space
- Elevator Lobby Exposure
- Dedicated Conference Room
- New Furniture Available







Conveniently located near:

- Vibrant Broad Street Dining
- Woodruff Park & Centennial Olympic Park
- Peachtree Center MARTA Station
- Georgia State University

Del Early
Managing Partner
+1 770 262 0950
dearly@carterhilladvisors.com

Dominique Sherrod
Advisor
+1 619 791 3279
dominique@carterhilladvisors.com

The information contained in this communication has been obtained from a variety of sources believed to be reliable but has not been verified. NO WARRANTY OR REPRESENTATION, EXPRESS OR IMPLIED, IS MADE AS TO THE CONDITION OF THE PROPERTY OR ACCURACY OR COMPLETENESS OF THE INFORMATION CONTAINED HEREIN AND SAME IS SUBMITTED SUBJECT TO ERRORS OMISSIONS, CHANGE OF PRICE, RENTAL OR OTHER CONDITIONS, WITHDRAWAL WITHOUT NOTICE AND TO ANY SPECIFIC CONDITIONS IMPOSED BY THE PROPERTY OWNER OR LESSOR.