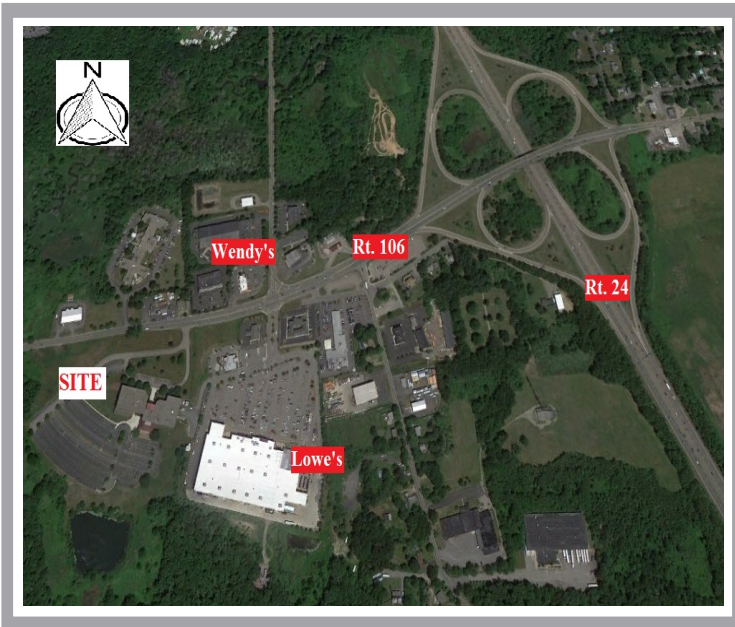


# FOR LEASE

750 West Center Street West Bridgewater, MA



## 15,737 SF Office Space Third Floor West

\* **Build Out:**

8 Private Offices  
2 Meeting Rooms  
1 Conference Room  
Break Room

\* **Building Amenities:**

Full Service Cafeteria  
Dual Internet Feeds  
Full building back up generator

\* **Parking: 6/1,000 SF**

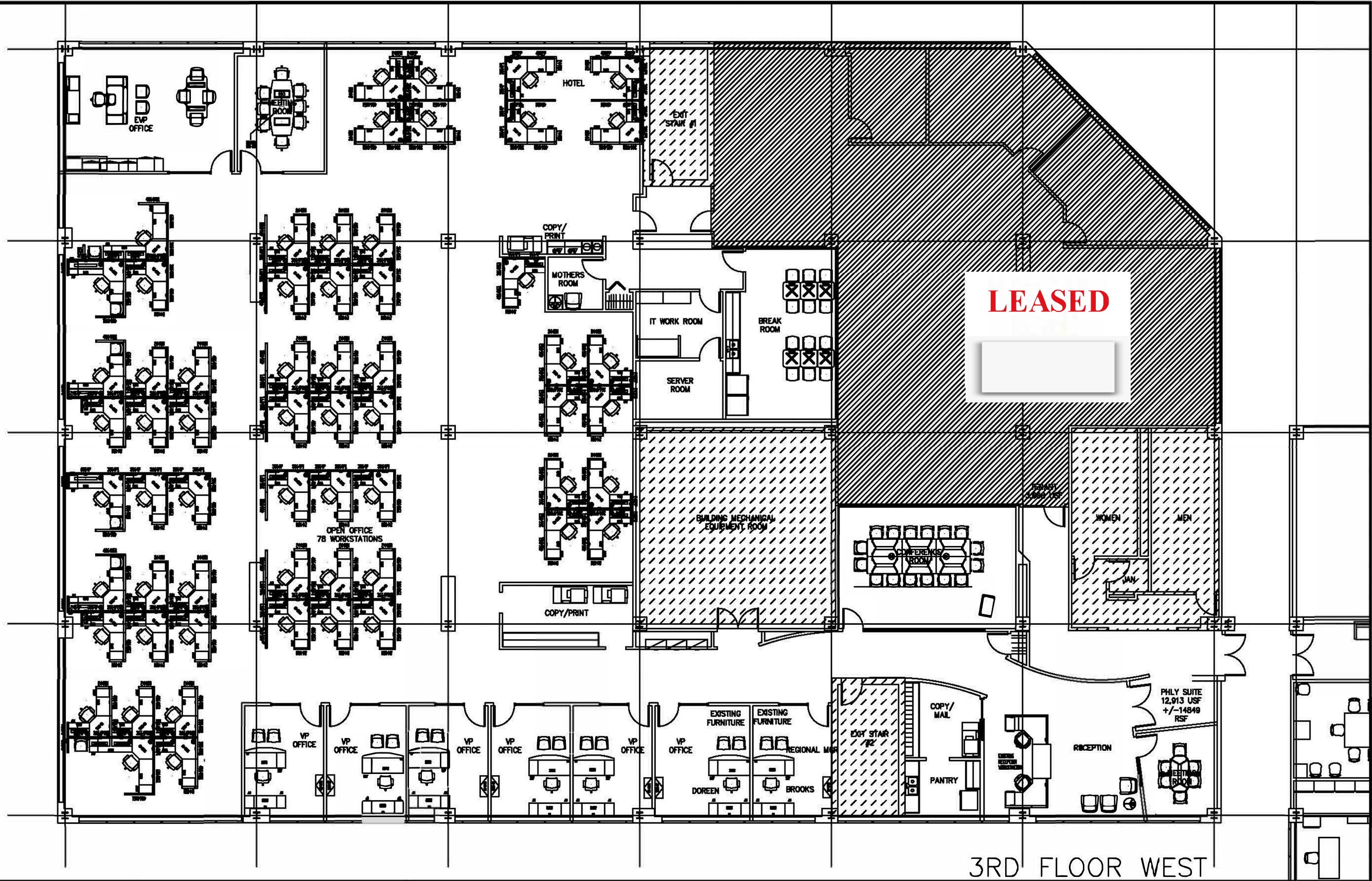
**.3 Miles to Route 24**

**DONAHUE**  
ASSOCIATES

*Commercial & Industrial Real Estate*  
457 Belmont Street  
Brockton, MA 02301  
Tel: 508.588.1717  
[mdre@donahueassociates.com](mailto:mdre@donahueassociates.com)

No warranty or representation, express or implied, is made as to the accuracy of the information contained herein, and the same is submitted subject to errors, omissions, change of price, rental or other conditions, withdrawal without notice.

[www.donahueassociates.com](http://www.donahueassociates.com)



**LEASED**

3RD FLOOR WEST

THIS DRAWING IS PROPERTY OF TRANSMERICAN AND IS ISSUED ONLY FOR NEGOTIATIONS BETWEEN THE CUSTOMER AND TRANSMERICAN OFFICE FURNITURE, INC.  
 REPRODUCTION OR FURTHER USE OF THIS DRAWING FOR CONSTRUCTION OR ANY OTHER PURPOSE IS FORBIDDEN UNLESS WRITTEN AUTHORIZATION IS FIRST OBTAINED FROM TRANSMERICAN OFFICE FURNITURE, INC.  
 THE CONTRACTOR SHALL CHECK AND VERIFY ALL DIMENSIONS AND REPORT ANY OMISSIONS AND ERRORS.  
 DO NOT SCALE DRAWINGS.

**DATE:** 12/13/2012  
**PROJECT #:** RV12228-R1  
**SCALE:** NTS  
**ACCT. REP:** R. VAIL  
**DRAWN BY:** IK

**CLIENT:**  
**PHILADELPHIA INSURANCE**  
**BRIDGEWATER, 3RD FLOOR**  
**BOSTON, MASS**

**TransAmerican**  
 OFFICE FURNITURE, INC.  
 3800 MAIN STREET - PHILA, PA. 19127  
 TEL: (215) 482-8550 FAX: (215) 483-3452