



**OFFICE
INDUSTRIAL
RETAIL TEAM**

By Jake Levinson

Outside the box.

2180 FOR LEASE

BRYANT ST

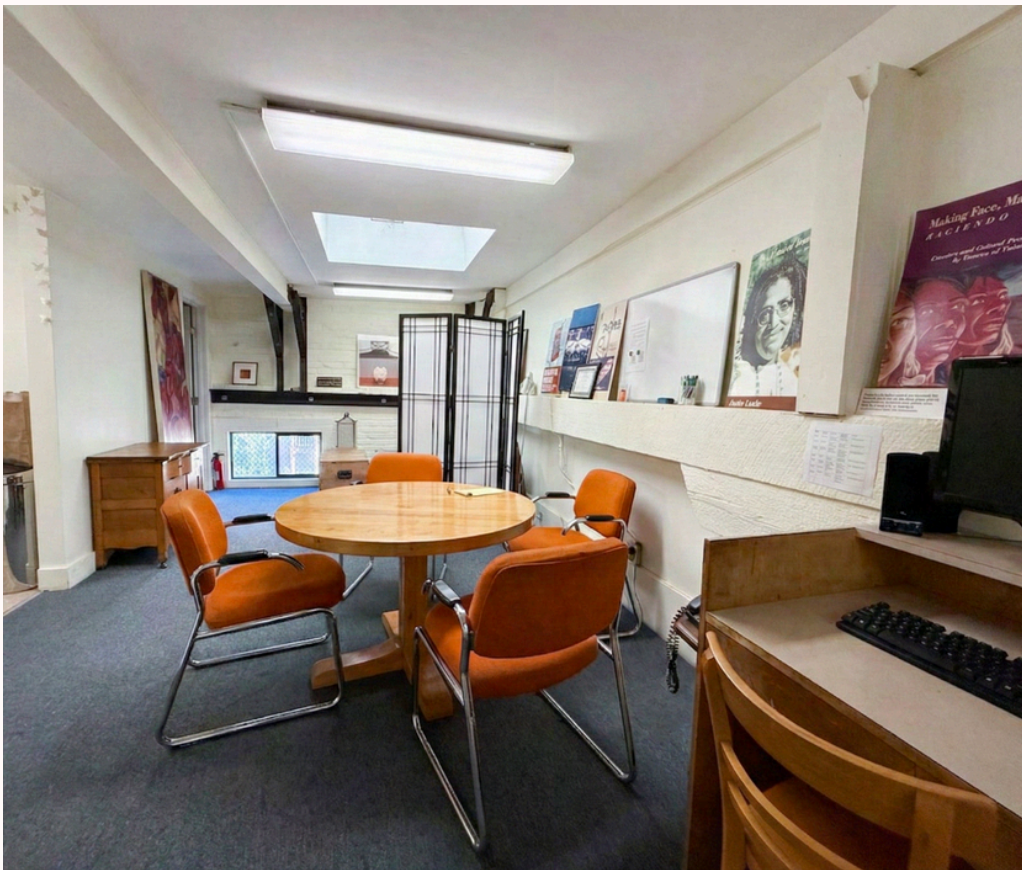


JAKE LEVINSON

MANAGING DIRECTOR
(415) 786-4303
JAKE@GROUNDMATRIX.COM

HANNAH REUBENS

ASSOCIATE
(415) 299-3371
HANNAH@GROUNDMATRIX.COM



- **\$7,000/MO IG**
- **STORAGE AVAILABLE**
- **±1,450 SF CREATIVE OFFICE SUITE**
- **PRIME LOCATION**

JAKE LEVINSON
MANAGING DIRECTOR
(415) 786-4303
JAKE@GROUNDMATRIX.COM

HANNAH REUBENS
ASSOCIATE
(415) 299-3371
HANNAH@GROUNDMATRIX.COM



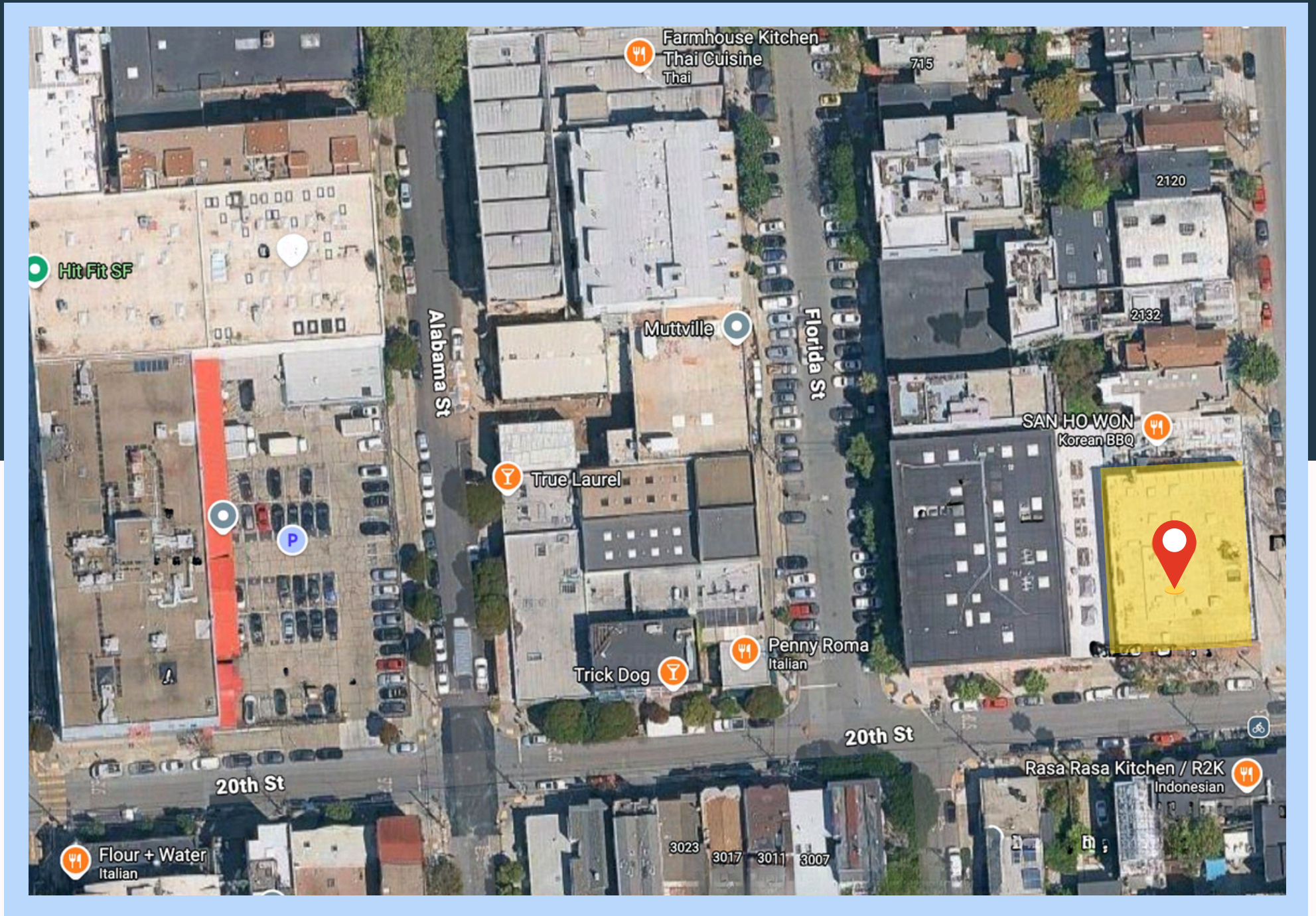
- PRIVATE BATHROOM WITH SHOWER
- KITCHEN
- TI'S AVAILABLE
- HEATING



JAKE LEVINSON
MANAGING DIRECTOR
(415) 786-4303
JAKE@GROUNDMATRIX.COM

HANNAH REUBENS
ASSOCIATE
(415) 299-3371
HANNAH@GROUNDMATRIX.COM

PRIME LOCATION IN THE HEART OF THE MISSION!



 2180 Bryant St, Suite 300 | Mission District



Outside the box.

2180

FOR LEASE

BRYANT ST



CONTACT US:

JAKE LEVINSON

(415) 786-4303

JAKE@GROUNDMATRIX.COM

HANNAH REUBENS

(415) 299-3371

HANNAH@GROUNDMATRIX.COM