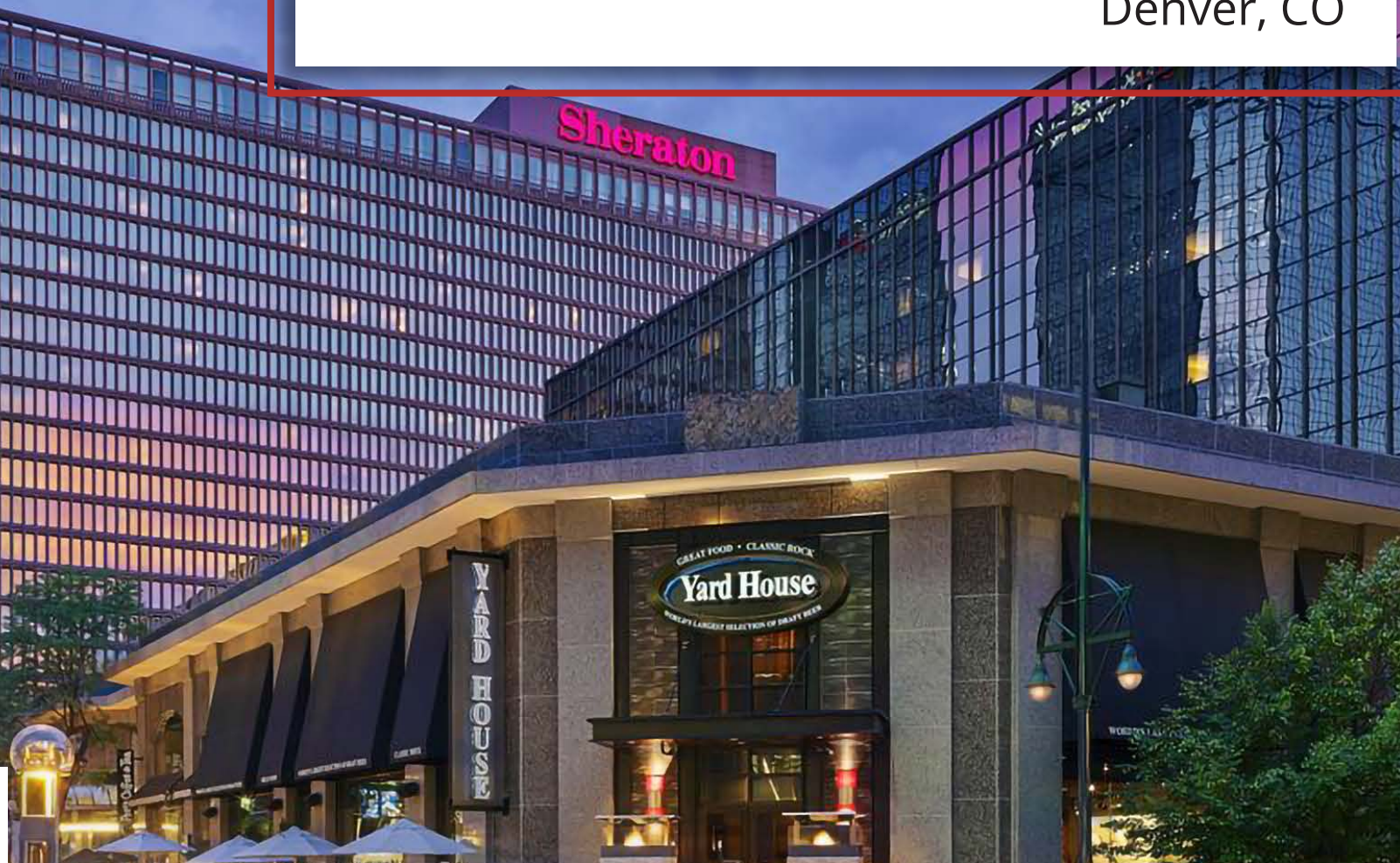


Retail & Restaurant Space in Prime Downtown Location

1,000 - 10,000 SF Available

Denver, CO



ZALL
COMMERCIAL
REAL ESTATE

The art of spacial intelligence.

STUART ZALL
President

303.888.9040 (c)
303.804.5656 (o)
szall@zallcompany.com

KYLE FRAMSON
Broker Associate

301.807.1421 (c)
303.804.5656 (o)
kframson@zallcompany.com

STACEY GLENN DEPALMA
Broker Associate

303.909.2745 (c)
303.804.5656 (o)
sglenn@zallcompany.com

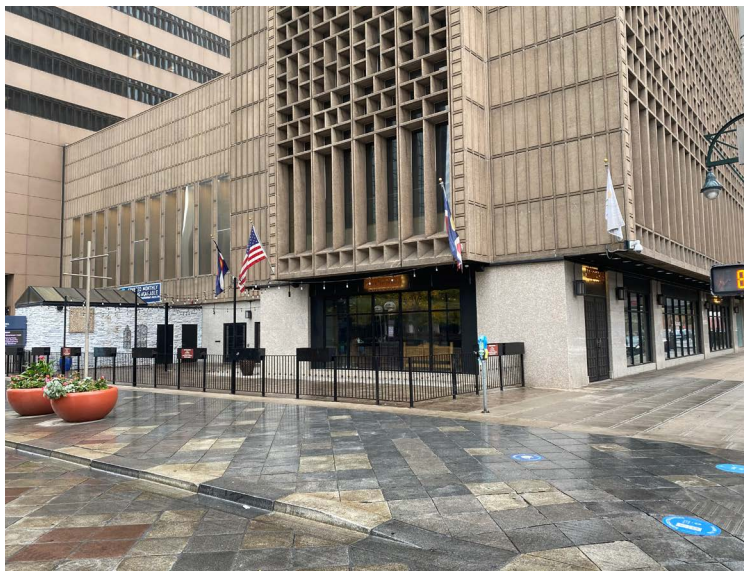
PROPERTY OVERVIEW

1550 Court Place, Denver, CO 80202
Retail | Restaurant

PROPERTY HIGHLIGHTS

- Retail/Restaurant space available in ground floor of Sheraton Hotel with over 1,200 guest rooms and 100,000 SF of meeting space
- The entire property underwent a multi-million dollar renovation in 2020
- Space available on 16th Street Mall
- 10,000 SF 2nd generation full service restaurant with large patio
- Retail spaces available 1,000 - 2,200 SF
- Suited for a variety of users - QSR, convenience, fitness, salon, etc

JOIN



STACEY GLENN DEPALMA
Broker Associate

303.909.2745 (c)
303.804.5656 (o)
sglenn@zallcompany.com

KYLE FRAMSON
Broker Associate

301.807.1421 (c)
303.804.5656 (o)
kframson@zallcompany.com

STUART ZALL
President

303.888.9040 (c)
303.804.5656 (o)
szall@zallcompany.com



DEMOGRAPHICS

1550 Court Place, Denver, CO 80202
Restaurant | Retail

HOUSEHOLDS

1 MILE	3 MILE	5 MILE
30,662	127,661	235,967

AVG HOUSEHOLD INCOME

1 MILE	3 MILE	5 MILE
\$89,934	\$104,888	\$102,500

POPULATION

1 MILE	3 MILE	5 MILE
47,259	246,550	515,698

AVG DAILY TRAFFIC

14th Street
6,132 VPD

20th Street
18,607 VPD

Colfax Avenue
47,000 VPD