

AVAILABLE FOR DEVELOPMENT

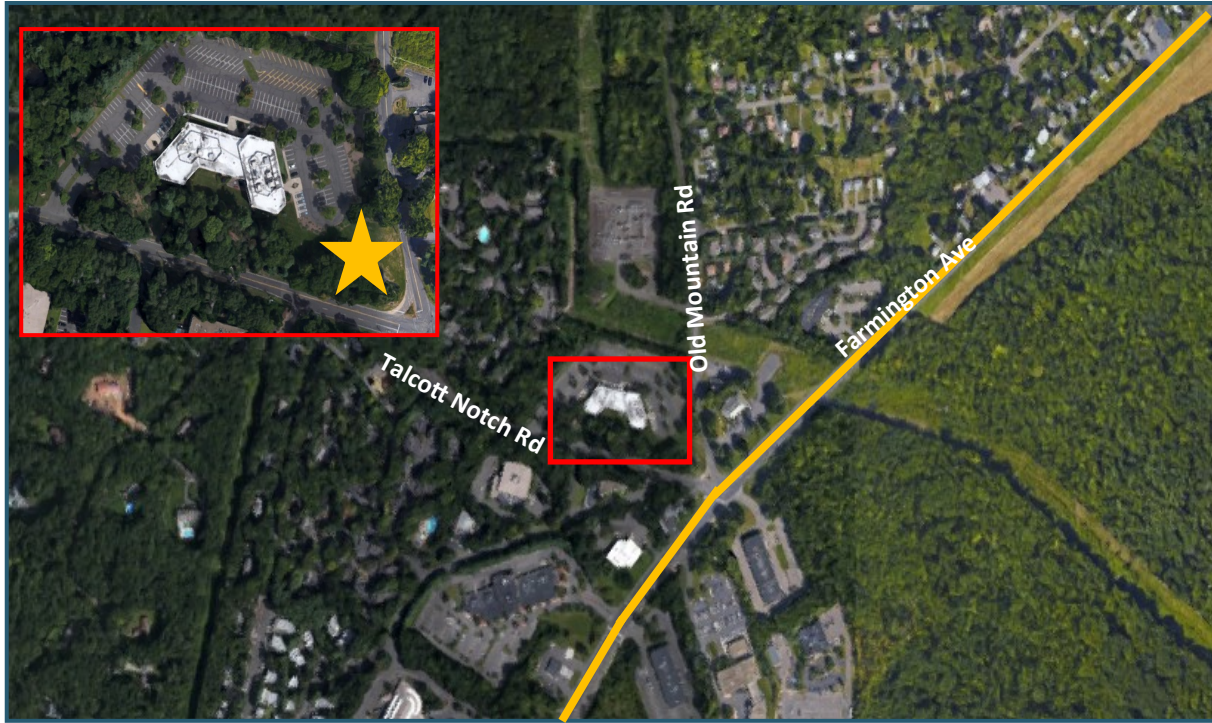
10 TALCOTT NOTCH ROAD LAND

FARMINGTON, CT



FIGURE EIGHT

PROPERTIES



PROPERTY DETAILS

Figure Eight Properties presents 4,550 square feet of buildable land centrally located in Farmington, Connecticut at the intersection of Farmington Avenue, Talcott Notch Rd and Old Mountain Rd. The property is zoned for retail use and is in close proximity to many corporate and medical users such as the UCONN Health Center and Jackson Laboratory.

The site is conveniently located near I-84 and Route 9 and is close to both West Hartford Center and Farmington Village.

FOR ADDITIONAL INFORMATION, PLEASE CONTACT:

Jim Kelly
860.313.5400 x 162
jim@f8properties.com

Phoebe Ky
860.313.5400 x 145
phoebe@f8properties.com

Figure Eight Properties
Corporate Center West
433 South Main Street, Suite 328
West Hartford, CT 06110
www.f8properties.com

AVAILABLE FOR DEVELOPMENT

10 TALCOTT NOTCH ROAD LAND

FARMINGTON, CT

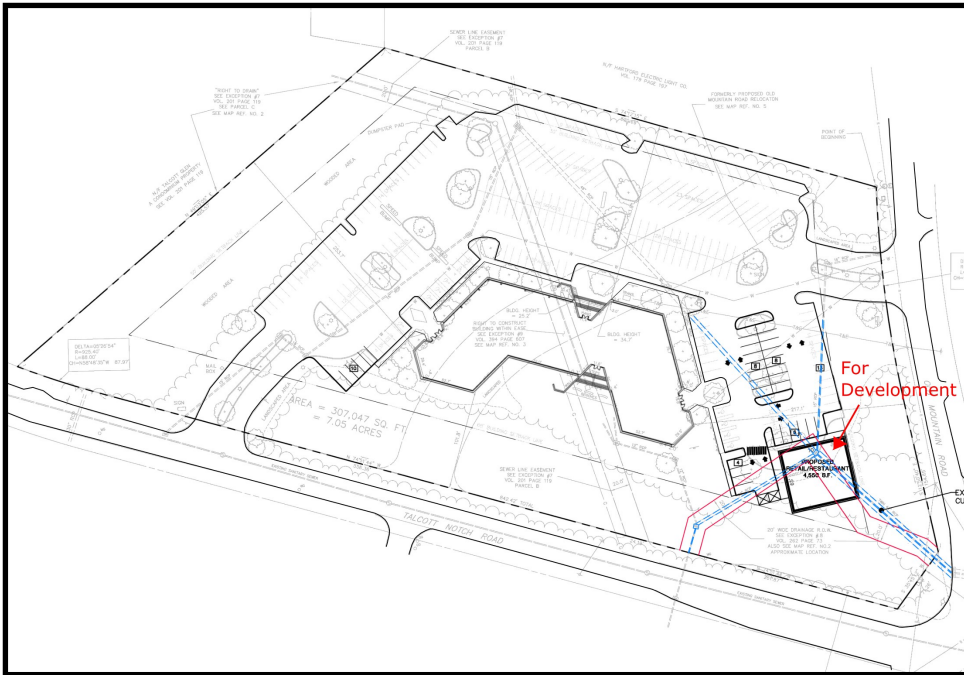


FIGURE EIGHT

PROPERTIES

LOCATION PLAN

- ▶ Zoned as Retail/Restaurant
- ▶ Buildable land - 4,550 SF
- ▶ Adjacent to the Farmington Avenue medical and office corridor



FOR ADDITIONAL INFORMATION, PLEASE CONTACT:

Jim Kelly
860.313.5400 x 162
jim@f8properties.com

Phoebe Ky
860.313.5400 x 145
phoebe@f8properties.com

Figure Eight Properties

Corporate Center West
433 South Main Street
Suite 328

West Hartford, CT 06110

www.f8properties.com