



PROPERTY DESCRIPTION

Introducing a rare IOS + Warehouse / Office site in the heart of the Lakeland area, minutes from I-4. Total of 2.18 AC with a total of 5,796 SF with an I-2 (Industrial) zoning in the city of Lakeland, which allow outdoor storage. Located across the street from Publix financial department and truck parking, as well as 2 miles (4min) from I-4.

The warehouse is 3,200 SF built in 2022 with 16' clear height, two bay doors (12'x14') and one restroom. The home is 1,700 SF, fully renovated in 2024, with 4 bedrooms, living room, kitchen and open space, could be transition into an office. The garage of 800 SF with a large covered area.

Situated between Tampa and Orlando, this property is just 20 miles (25 minutes) from Tampa and about 62 miles (60 minutes) from Orlando, making it a prime location for businesses looking to serve both metro areas. Easy access to i-4, Polk Parkway, downtown Lakeland, and access a strong demographic and workforce. Join many corporate offices and well diversified corporations located near the property including Publix HQ, Amazon, Geico, Auto Owners Insurance, Draken, Lockheed Martin, Digarc and many others.

VIDEO

OFFERING SUMMARY

Sale Price:	Call 863-250-9010
Total Building Size:	5,796 SF
Warehouse Size:	3,200 SF
Home / Office / Garage Size:	1,700 SF + 800 SF
Lot Size:	2.17 Acres
Year Built / Renovated:	1972-2022 / 2024
Zoning:	I-2 (Industrial)

DEMOGRAPHICS	15 MILES	45 MILES	90 MILES
Total Households	171,107	1,568,159	3,735,978
Total Population	470,449	4,147,668	9,509,625
Average HH Income	\$89,516	\$100,952	\$99,012

ABBAS "AJ" JAFFER, MICP

863.250.9010

ajaffer@ruthvens.com

ALEX DELANNOY, SIOR

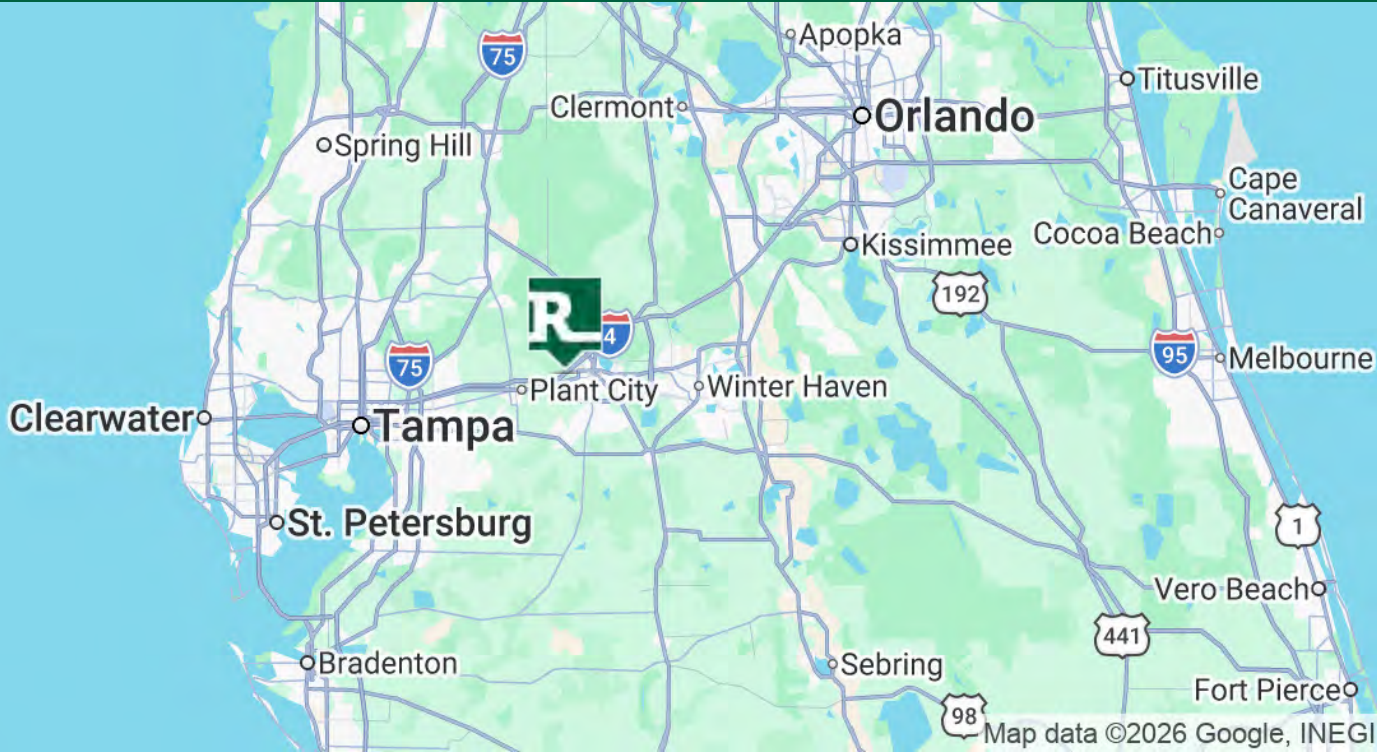
863.250.2502

adelannoy@ruthvens.com



SCAN FOR
UPDATES

View Property
Website



Google

Map data ©2026 Google, INEGI



Google

Map data ©2026

ABBAS "AJ" JAFFER, MICP
863.250.9010
ajaffer@ruthvens.com

ALEX DELANNOY, SIOR
863.250.2502
adelannoy@ruthvens.com



SCAN FOR
UPDATES

View Property
Website



CITY OF LAKELAND

Lakeland has always been a hub of innovation and progressive ideas. Today, the City continues to thrive as population and business expansions are attracted to this area, the geographic center of Florida. Lakeland's economic base consists of warehouse, transportation and distribution, education, health care, manufacturing and retail.

Lakeland has received the distinction of being on Money Magazine's "Best Place to Live in America" list. In addition, Lakeland is home to Publix Supermarkets, Amazon, Florida Southern College and is the winter home to the Detroit Tigers.

LARGEST EMPLOYERS IN LAKELAND NEARBY

Headquartered within one mile from subject property in Lakeland, Publix is Florida's largest private employer. In 2018, they announced it would hire those additional 700 employees to fill a 190,000 square foot office addition bringing their total employment in Lakeland to over 8,000.

On top of their current corporate offices located within a couple of miles of subject property, Geico recently expanded their regional office by another 50,000 square feet. This expansion resulted in a \$12 million capital investment 500 new High-Skill, High-Wage jobs, bringing their Lakeland employment to 3,700.



AMAZON FULFILLMENT AND PRIME AIR HUB

In 2014, Amazon constructed and opened a new 1,000,000+ square foot fulfillment center located on County Line Road with 900+ employees, since then Amazon continued to chose Lakeland and not only quadruple their size in Polk County but relocated their Amazon Air HUB in 2020 to Lakeland International Airport from Tampa with a new 285,000 square feet facility creating thousands of jobs.

In 2021, they announce an expansion that will more than double their capacity making it the largest Amazon facility in the Southeast in 2022 with another 464,000 square feet and hundreds of new jobs



ABBAS "AJ" JAFFER, MICP
863.250.9010
ajaffer@ruthvens.com

ALEX DELANNOY, SIOR
863.250.2502
adelannoy@ruthvens.com



SCAN FOR
UPDATES

View Property
Website



ABBAS "AJ" JAFFER, MICP

863.250.9010

ajaffer@ruthvens.com

ALEX DELANNOY, SIOR

863.250.2502

adelannoy@ruthvens.com



SCAN FOR
UPDATES

View Property
Website



ABBAS "AJ" JAFFER, MICP

863.250.9010

ajaffer@ruthvens.com

ALEX DELANNOY, SIOR

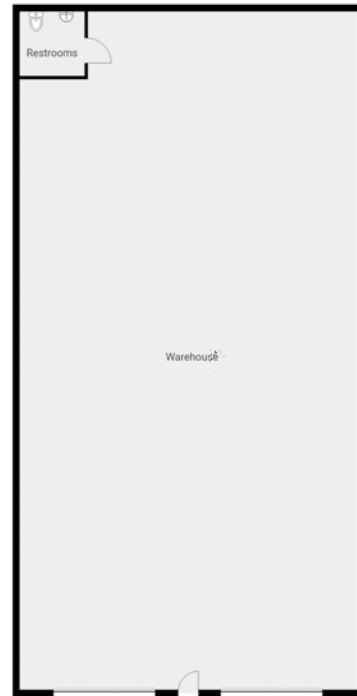
863.250.2502

adelannoy@ruthvens.com



SCAN FOR
UPDATES

View Property
Website



ABBAS "AJ" JAFFER, MICP
863.250.9010
ajaffer@ruthvens.com

ALEX DELANNOY, SIOR
863.250.2502
adelannoy@ruthvens.com

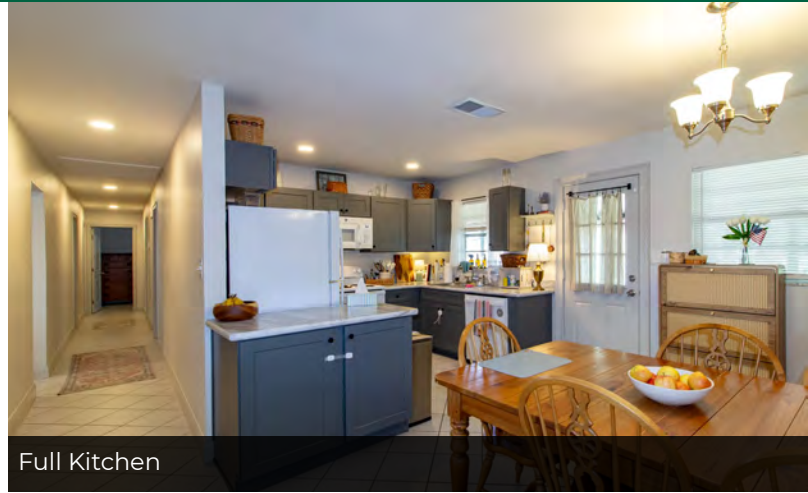


SCAN FOR
UPDATES

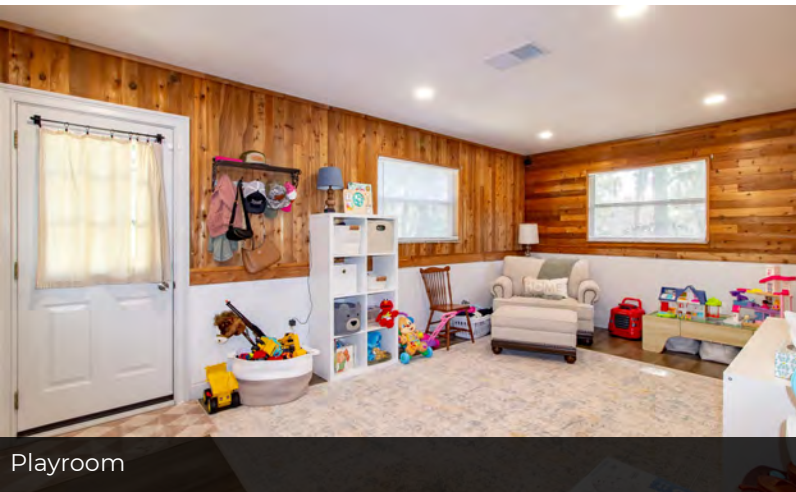
View Property
Website



On Property Home or Office



Full Kitchen



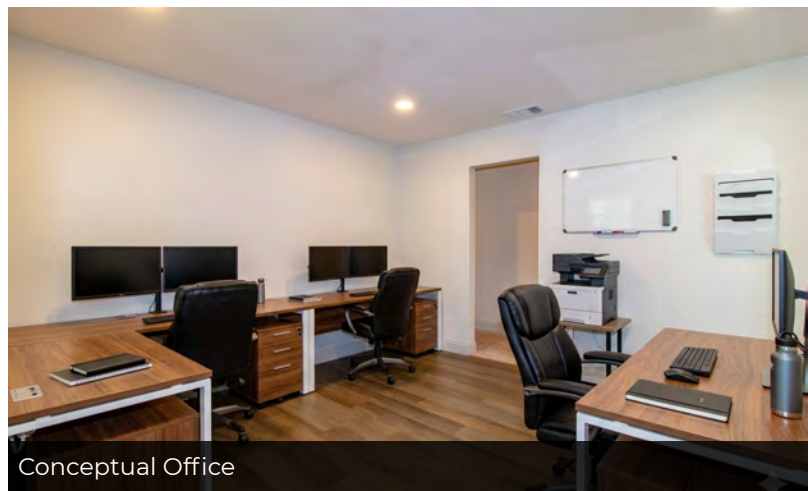
Playroom



Bedroom



Conceptual Conference Room



Conceptual Office

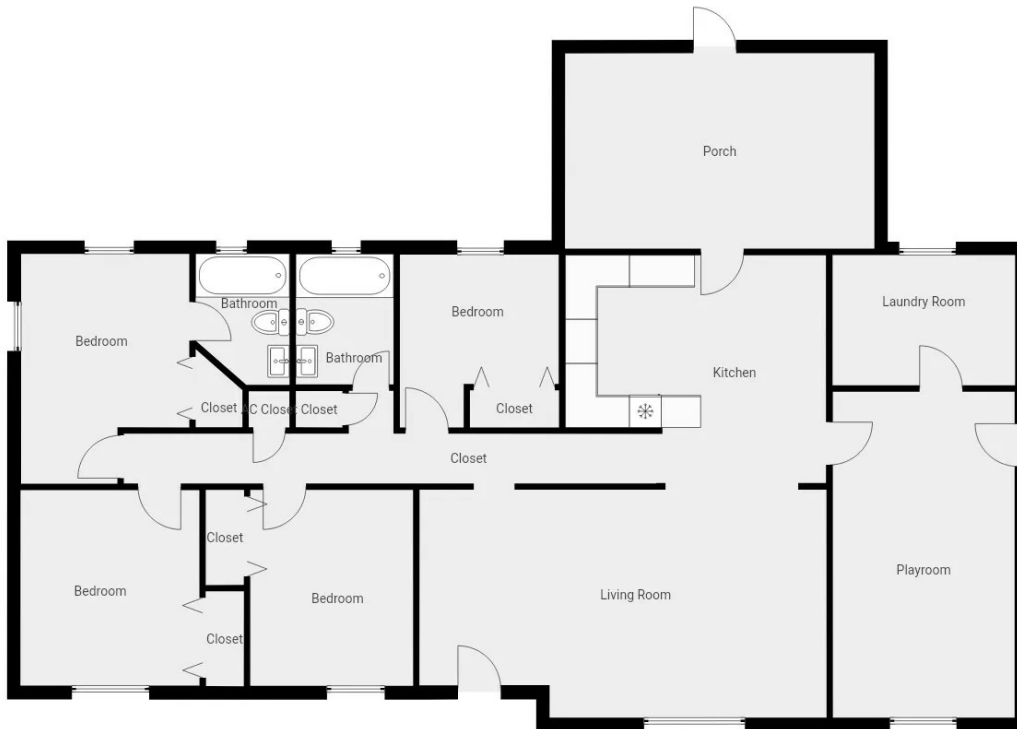
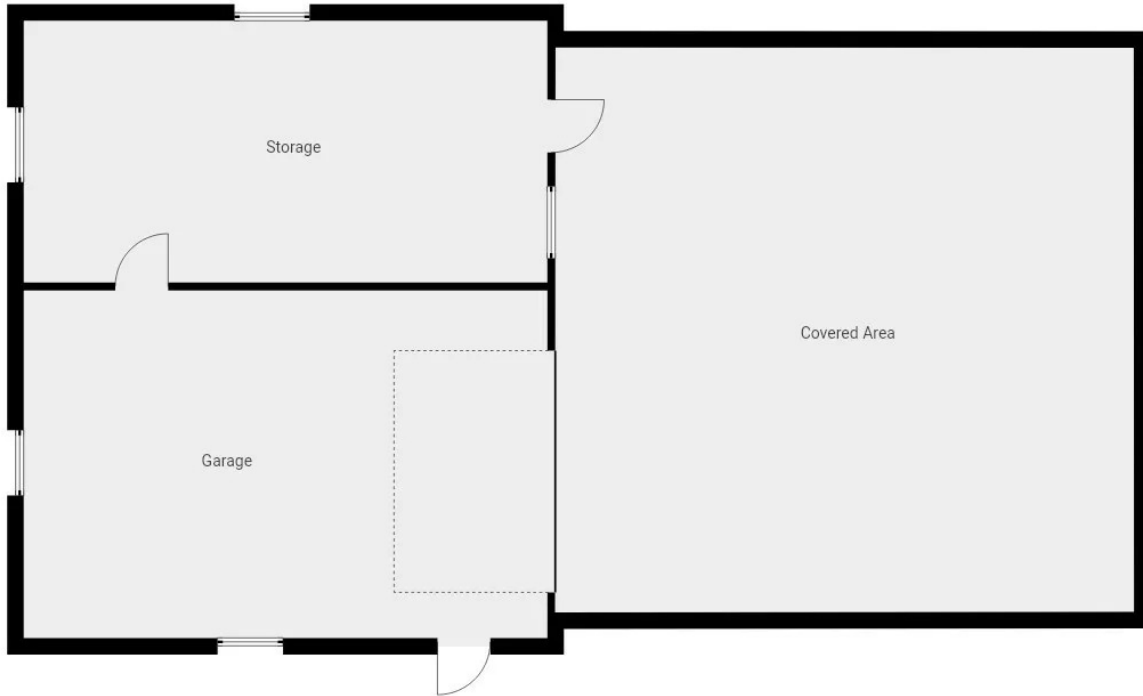
ABBAS "AJ" JAFFER, MICP
863.250.9010
ajaffer@ruthvens.com

ALEX DELANNOY, SIOR
863.250.2502
adelannoy@ruthvens.com



SCAN FOR
UPDATES

View Property
Website



ABBAS "AJ" JAFFER, MICP
863.250.9010
ajaffer@ruthvens.com

ALEX DELANNOY, SIOR
863.250.2502
adelannoy@ruthvens.com



SCAN FOR
UPDATES

View Property
Website



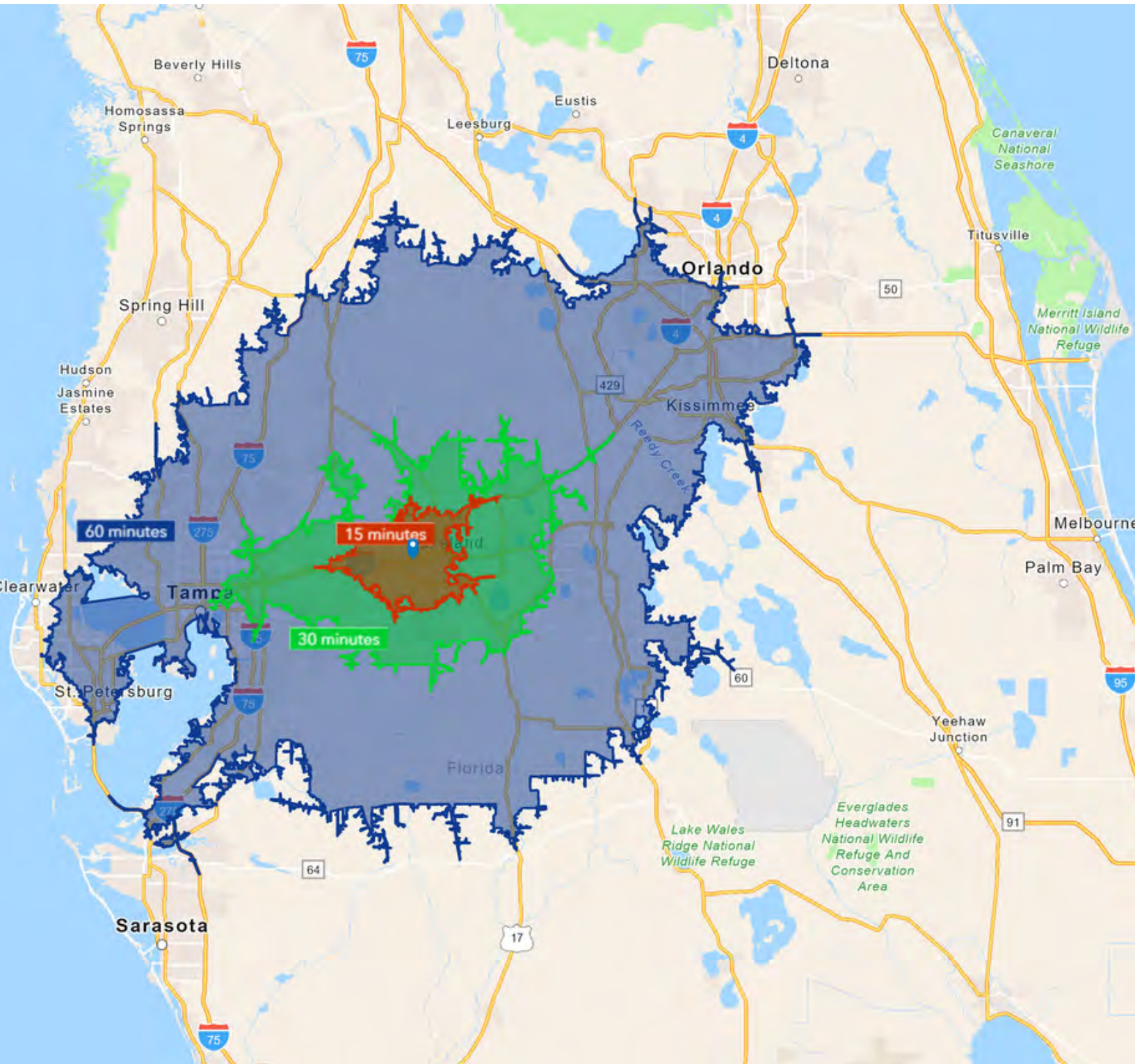
ABBAS "AJ" JAFFER, MICP
863.250.9010
ajaffer@ruthvens.com

ALEX DELANNOY, SIOR
863.250.2502
adelannoy@ruthvens.com



SCAN FOR
UPDATES

View Property
Website



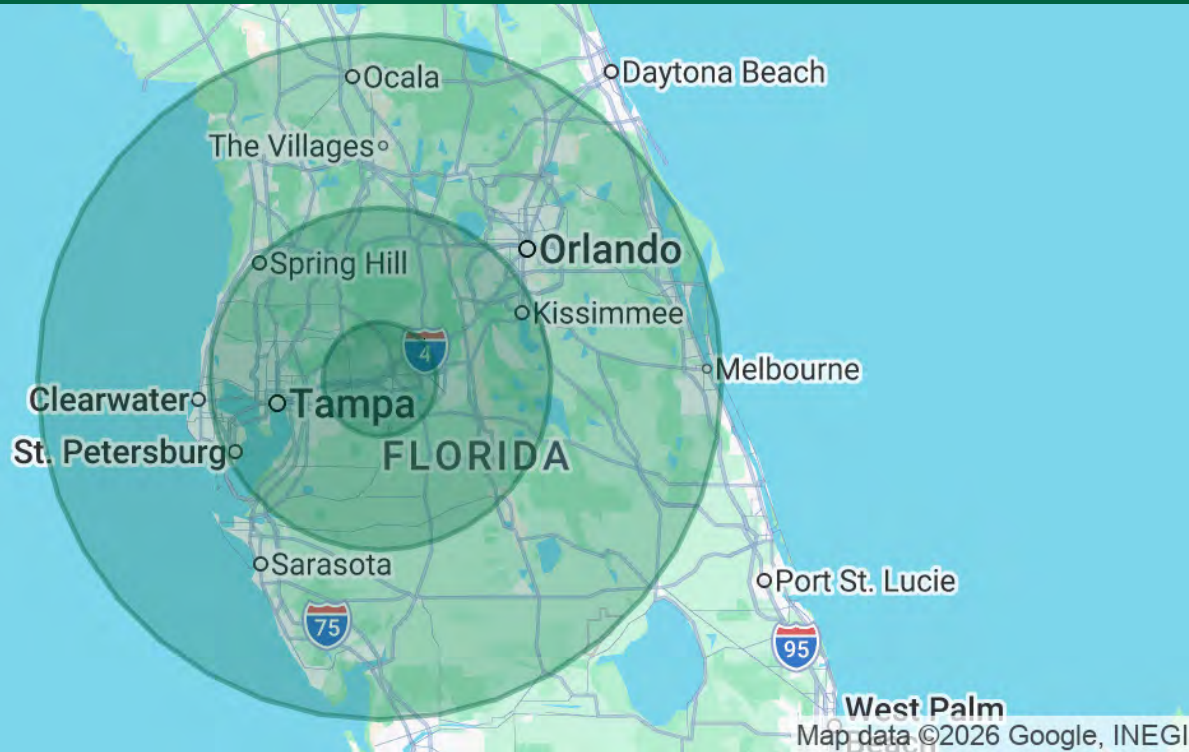
ABBAS "AJ" JAFFER, MICP
863.250.9010
ajaffer@ruthvens.com

ALEX DELANNOY, SIOR
863.250.2502
adelannoy@ruthvens.com



SCAN FOR
UPDATES

View Property
Website



POPULATION

	15 MILES	45 MILES	90 MILES
Total Population	470,449	4,147,668	9,509,625
Average Age	40.3	41.0	43.8
Average Age (Male)	39.0	40.1	42.8
Average Age (Female)	41.3	41.8	44.7

HOUSEHOLDS & INCOME

	15 MILES	45 MILES	90 MILES
Total Households	171,107	1,568,159	3,735,978
# of Persons per HH	2.7	2.6	2.5
Average HH Income	\$89,516	\$100,952	\$99,012
Average House Value	\$257,178	\$346,342	\$350,915

2023 American Community Survey (ACS)

ABBAS "AJ" JAFFER, MICP
863.250.9010
ajaffer@ruthvens.com

ALEX DELANNOY, SIOR
863.250.2502
adelannoy@ruthvens.com



SCAN FOR
UPDATES

View Property
Website



ABBAS "AJ" JAFFER, MICP

Brokerage- Senior Advisor

ajaffer@ruthvens.com

Direct: **863.686.3173** | Cell: **863.250.9010**

FL #SL3634234

PROFESSIONAL BACKGROUND

Abbas (AJ) Jaffer joined the Brokerage Properties and Services team in March of 2025, bringing with him extensive experience in industrial development and strategic business growth. Prior to this role, he served as the Vice President of Business Development for the Lakeland Economic Development Council (LEDC) for nearly three years. In this capacity, AJ played a key role in attracting high-skill, high-wage industries to Lakeland, working as a trusted partner for prospects, brokers, and developers. He managed the entire regulatory development process for the City and County, overseeing projects from their conceptual stages through to occupancy, and offering ongoing support throughout their life cycle.

Before his tenure with the LEDC, AJ held various positions within the City of Lakeland – Community and Economic Development Department over the course of eight years, including roles in the Building Inspection Division, Business Tax, Planning and Zoning, and Economic Development divisions. His experience in both the private and public sectors has given him a unique ability to bridge the gap between government and business interests, making him a valuable asset in every project he tackles.

In recognition of his dedication to the community, AJ was honored with the Entrepreneur Champion Award in 2024 by Catapult Lakeland. This prestigious award celebrates an individual or organization that has made a significant impact on supporting and mentoring entrepreneurs as they navigate the challenges of starting and growing businesses in Lakeland.

EDUCATION

Bachelor of Science in Business Administration from Polk State College.

Lipsey School of Real Estate - Masters in Commercial Property Designation (MiCP)

MEMBERSHIPS

Manufacturing & Supply Chain Alliance of Mid Florida (MSCA), Member

Commercial Real Estate Development Association (NAIOP) Tampa Bay, Developing Leader

Catapult Lakeland, Entrepreneur Champion Award

Makerspace, Advisory Board Member

ABBAS "AJ" JAFFER, MICP

863.250.9010

ajaffer@ruthvens.com

ALEX DELANNOY, SIOR

863.250.2502

adelannoy@ruthvens.com



SCAN FOR
UPDATES

View Property
Website



ALEX DELANNOY, SIOR

Vice President of Brokerage

adelannoy@ruthvens.com

Direct: **863.250.2502** | Cell: **863.250.2502**

PROFESSIONAL BACKGROUND

Alex Delannoy was born and raised in Toulouse, France, with a strong drive and burning desire to discover new experiences and knowledge. His travels through Europe and throughout the world have created a great passion for the diversity and culture he experienced.

Alex became a professional paintball player and came to the United States in 2010 when he joined one of the top teams in the league in the Tampa, FL area. After spending a few years with the team, his entrepreneurial spirit drove him to start his own business in Winter Haven, FL called Action Paintball & Laser Tag. The facility included a retail pro-shop, more than 30 trained employees, room for five different onsite activities, and became a thriving business with more than 35,000 players over the years. The business was purchased by an investor in early 2017.

He joined The Ruthvens in 2022 and leads the charge on our brokerage properties and services. He made a successful name for himself as a senior advisor at KW Commercial, where he built a book of commercial real estate business and managed brokerage assets in the Central Florida area for five years. Alex is known for providing results by creating opportunities through analyzing a problem and finding a durable solution by using all resources available. Alex is always looking at new ways to add value and skills, and his experience in his craft and in the community is a big reason he's a trusted resource to head up the brokerage properties division at The Ruthvens.

EDUCATION

FGCAR Commercial Real Estate University Courses

Lipsey School of Real Estate - Commercial MICP Designation

MEMBERSHIPS

Society of Industrial and Office Realtors (SIOR), Florida Regional Director & Tech Chair

Certified Commercial Investment Member Institute (CCIM), Candidate

Manufacturing & Supply Chain of Mid Florida

NAIOP Member of Central Florida

National Realtor Association

Lakeland Realtor Association

ABBAS "AJ" JAFFER, MICP

863.250.9010

ajaffer@ruthvens.com

ALEX DELANNOY, SIOR

863.250.2502

adelannoy@ruthvens.com



SCAN FOR
UPDATES

View Property
Website