



Keegan & Coppin  
COMPANY, INC.

FOR LEASE

500 TAMAL PLAZA  
CORTE MADERA, CA

Office Space for Lease

500  
TAMAL PLAZA

REPRESENTED BY:

**NATHAN BALLARD, PARTNER**  
LIC # 01743417 (415) 461-1010, EXT 116  
[NBALLARD@KEEGANCOPPIN.COM](mailto:NBALLARD@KEEGANCOPPIN.COM)

**MATT STORMS, PARTNER**  
LIC # 01233478 (415) 461-1010, EXT 123  
[MSTORMS@KEEGANCOPPIN.COM](mailto:MSTORMS@KEEGANCOPPIN.COM)





# OFFICE SPACE FOR LEASE



500 TAMAL PLAZA  
CORTE MADERA, CA

## OFFICE SPACE

## PROPERTY INFORMATION

### HIGHLIGHTS

- Abundant Parking
- Flexible Floorplans
- Directly off Hwy 101
- Generous Window Line
- Excellent Central Marin Location
- Close to Many Amenities

### OFFICE SPACE

### DESCRIPTION

### RATE

<b>Suite: 501A</b>	<b>360 sf</b>	Ground floor space with open work area.	\$1,225/mo
<b>Suite: 502</b>	<b>676 sf</b>	Ground floor space with one private office and work area.	\$2,300/mo
<b>Suite: 525</b>	<b>872 sf</b>	Two private offices and open area.	\$2,835/mo
<b>Suite: 527</b>	<b>863 sf</b>	Four private offices, conference room, open work area with kitchenette.	\$2,805/mo
<b>Suite: 527D</b>	<b>375 sf</b>	Individual private office with shared work area, conference room and kitchenette.	\$1,200/mo
<b>Suite: 528</b>	<b>1,175 sf</b>	Two private offices, open work area, and kitchenette/breakroom.	\$3,820/mo
<b>Suite: 528B</b>	<b>435 sf</b>	Private office with shared reception/waiting room area and shared kitchenette.	\$1,400/mo
<b>Suite: 529</b>	<b>1,262 sf</b>	Efficient mixture of private offices and open work areas.	\$4,100/mo

### LEASE TERMS

#### Size

360 - 1,262+/- sq. ft.

#### Terms

Full Service

#### Parking

4 / 1,000

#### Total Building Size

29,712+/- sq. ft.

### DESCRIPTION OF PREMISES

Well maintained office/light industrial building in the convenient and strategically located Tamal Plaza campus of Corte Madera. Air conditioned. Medical uses permitted.

Keegan & Coppin Co., Inc.  
101 Larkspur Landing Circle, Ste. 112  
Larkspur, CA 94939  
www.keegancoppin.com  
(415) 461-1010

The above information, while not guaranteed, has been secured from sources we believe to be reliable. Submitted subject to error, change or withdrawal. An interested party should verify the status of the property and the information herein.

REPRESENTED BY:

**NATHAN BALLARD, PARTNER**  
LIC # 01743417 (415) 461-1010, EXT 116  
**NBALLARD@KEEGANCOPPIN.COM**

**MATT STORMS, PARTNER**  
LIC # 01233478 (415) 461-1010, EXT 123  
**MSTORMS@KEEGANCOPPIN.COM**



# OFFICE SPACE FOR LEASE



500 TAMAL PLAZA  
CORTE MADERA, CA

## OFFICE SPACE

### DESCRIPTION OF AREA

Located approximately 12 miles north of San Francisco, Corte Madera is one of the most active commercial communities in Marin County. In addition to its 9,425 residents, all of Marin considers Corte Madera to be its shopping area because of its central location and its prevalence of retailers and service providers.

### NEARBY AMENITIES

- Close proximity to dozens of cafes, shops and restaurants
- Private and public schools, from preschool through high school
- Thriving cultural community
- Blocks from Corte Madera Town Center
- Minutes from the Village at Corte Madera

### TRANSPORTATION ACCESS



2 minutes



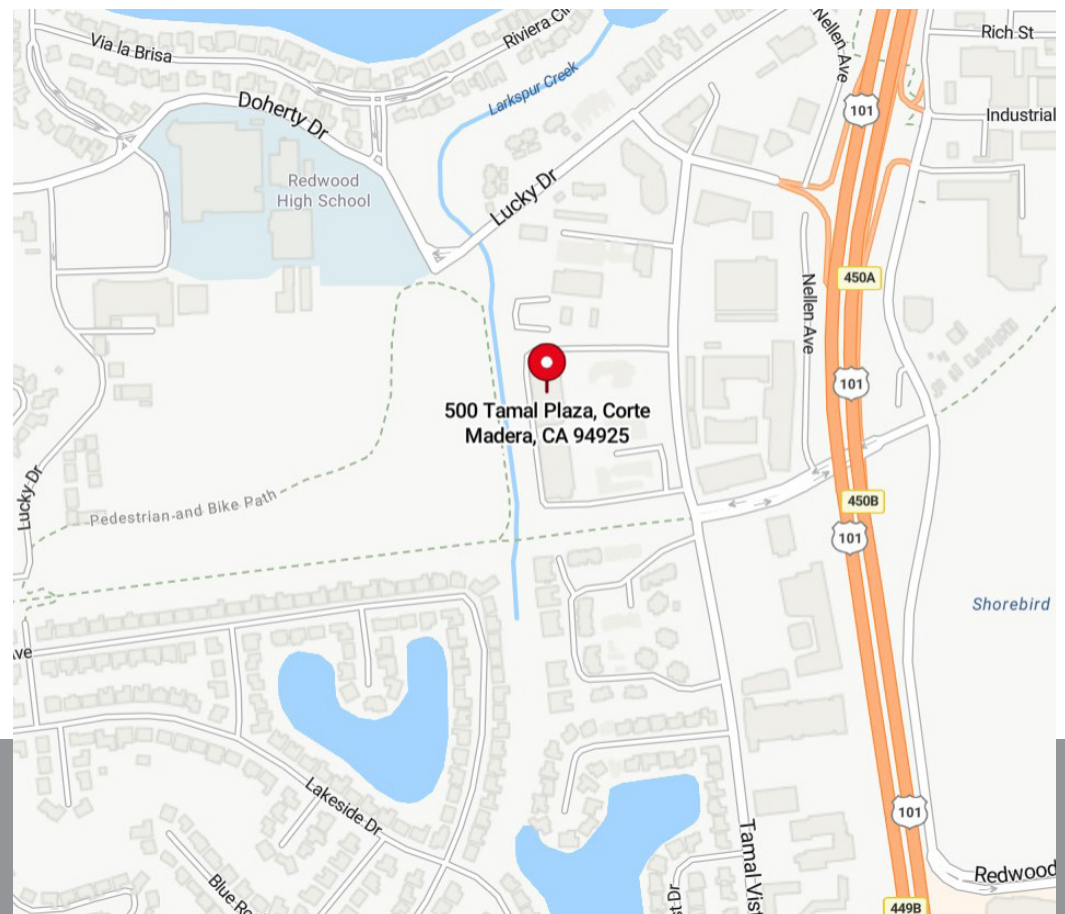
6 minutes



6 minutes



2 minutes, Redwood Hwy/Lucky Dr Bus Pad, Routes 27



REPRESENTED BY:

**NATHAN BALLARD, PARTNER**  
LIC # 01743417 (415) 461-1010, EXT 116  
[NBALLARD@KEEGANCOPPIN.COM](mailto:NBALLARD@KEEGANCOPPIN.COM)

**MATT STORMS, PARTNER**  
LIC # 01233478 (415) 461-1010, EXT 123  
[MSTORMS@KEEGANCOPPIN.COM](mailto:MSTORMS@KEEGANCOPPIN.COM)

The above information, while not guaranteed, has been secured from sources we believe to be reliable. Submitted subject to error, change or withdrawal. An interested party should verify the status of the property and the information herein.



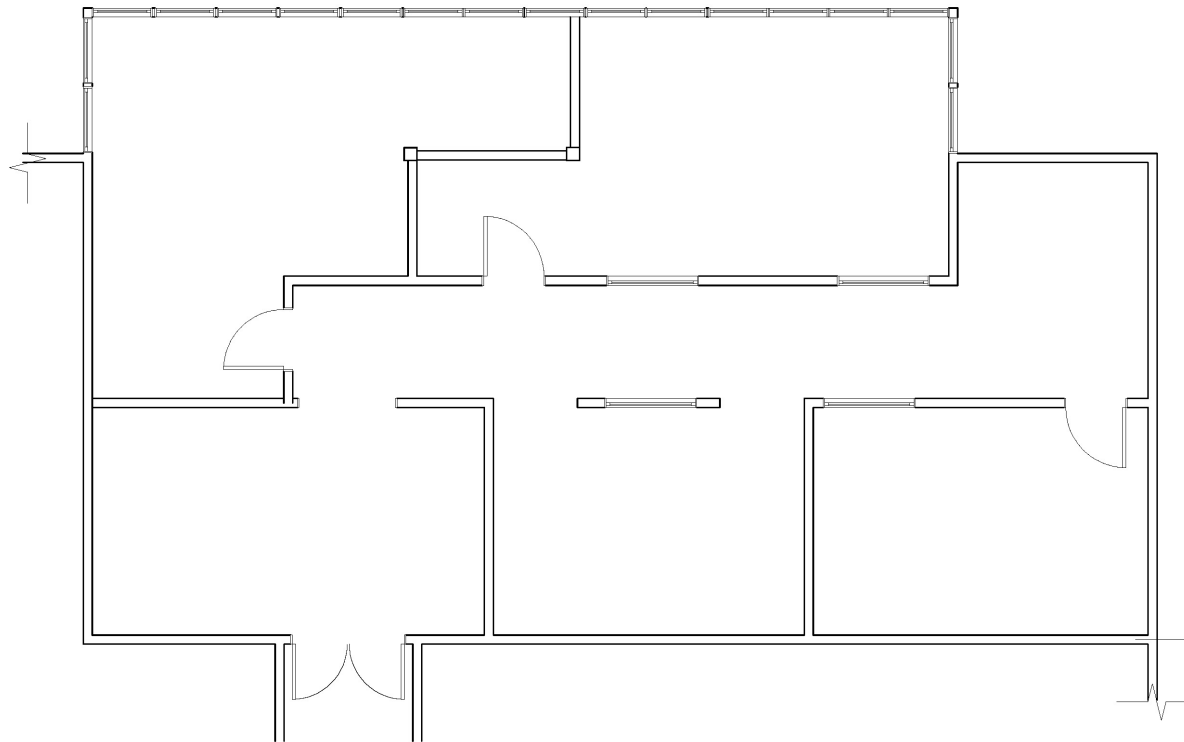
# FLOOR PLAN



500 TAMAL PLAZA  
CORTE MADERA, CA

**OFFICE SPACE**

SUITE 529  
1,262+/- RSF







# PHOTOS



500 TAMAL PLAZA  
CORTE MADERA, CA

**OFFICE SPACE**







## INTERIOR PHOTOS



500 TAMAL PLAZA  
CORTE MADERA, CA

OFFICE SPACE

