



2121 University Park Dr

Okemos, Michigan 48864

Property Highlights

- Suite 100 - 2,126 SF
- Suite 140 - 1,579 SF
- Suite 180 - 998 SF
- Professionally managed and maintained
- Easy access to I-96 @ Okemos
- Close to restaurants, hotels and retail
- Ample onsite parking

Offering Summary

Lease Rate:	\$15.00 SF/yr (MG)
Building Size:	14,670 SF
Available SF:	998 - 2,126 SF

For More Information

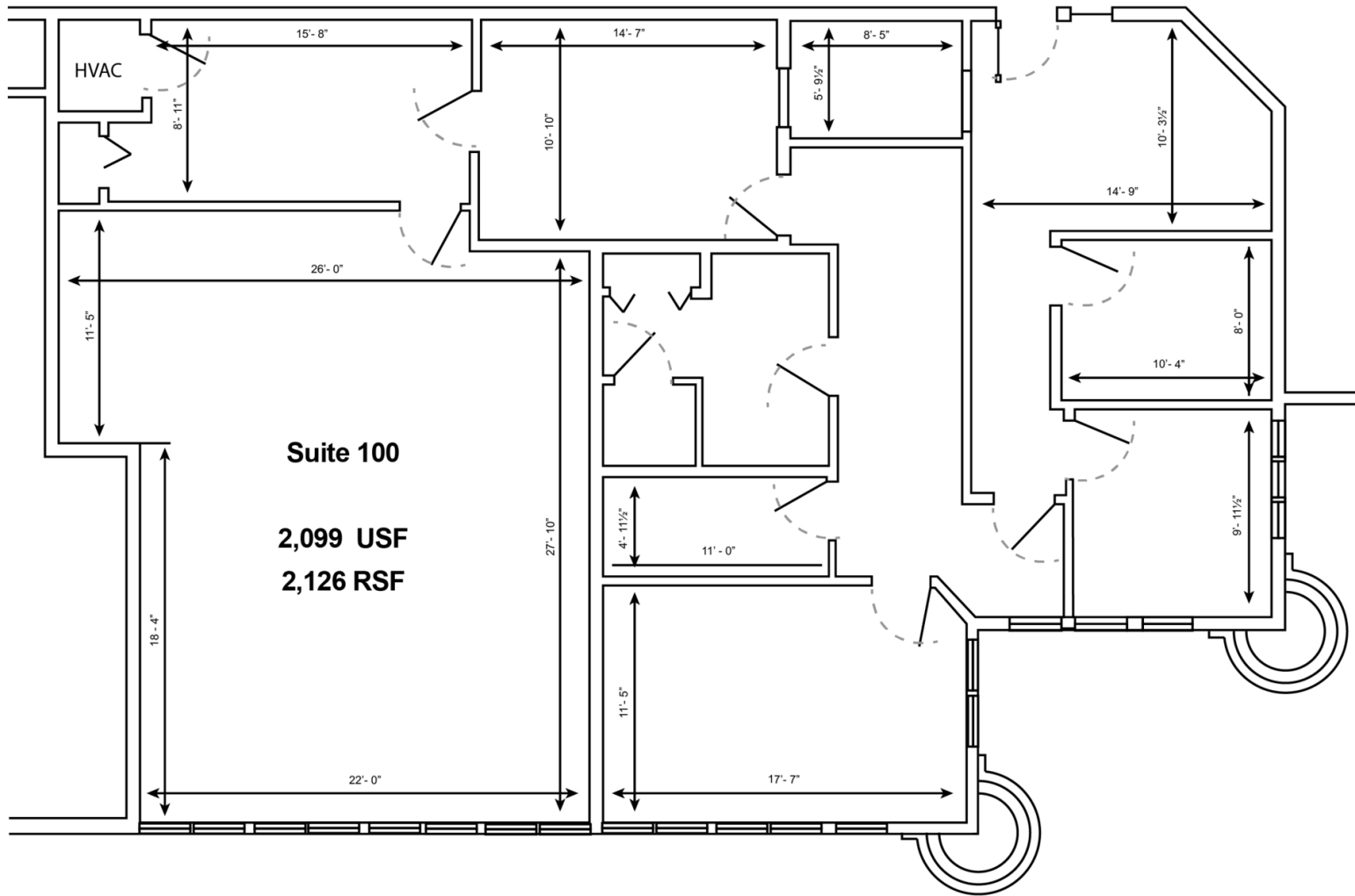


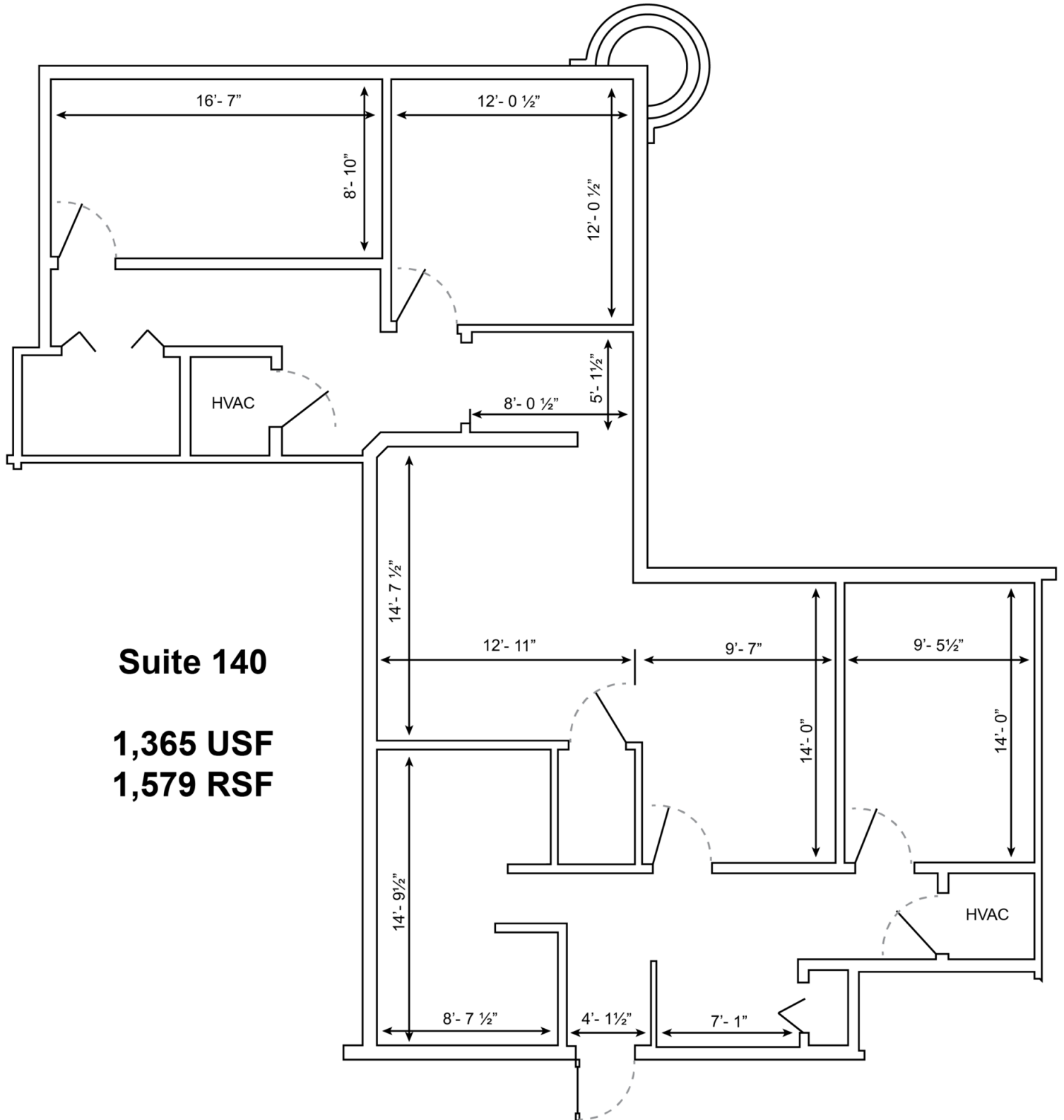
Jeffrey Branch

Commercial Advisor

O: 517 487 9222 | C: 517 899 6368

jbranch@naimidmichigan.com

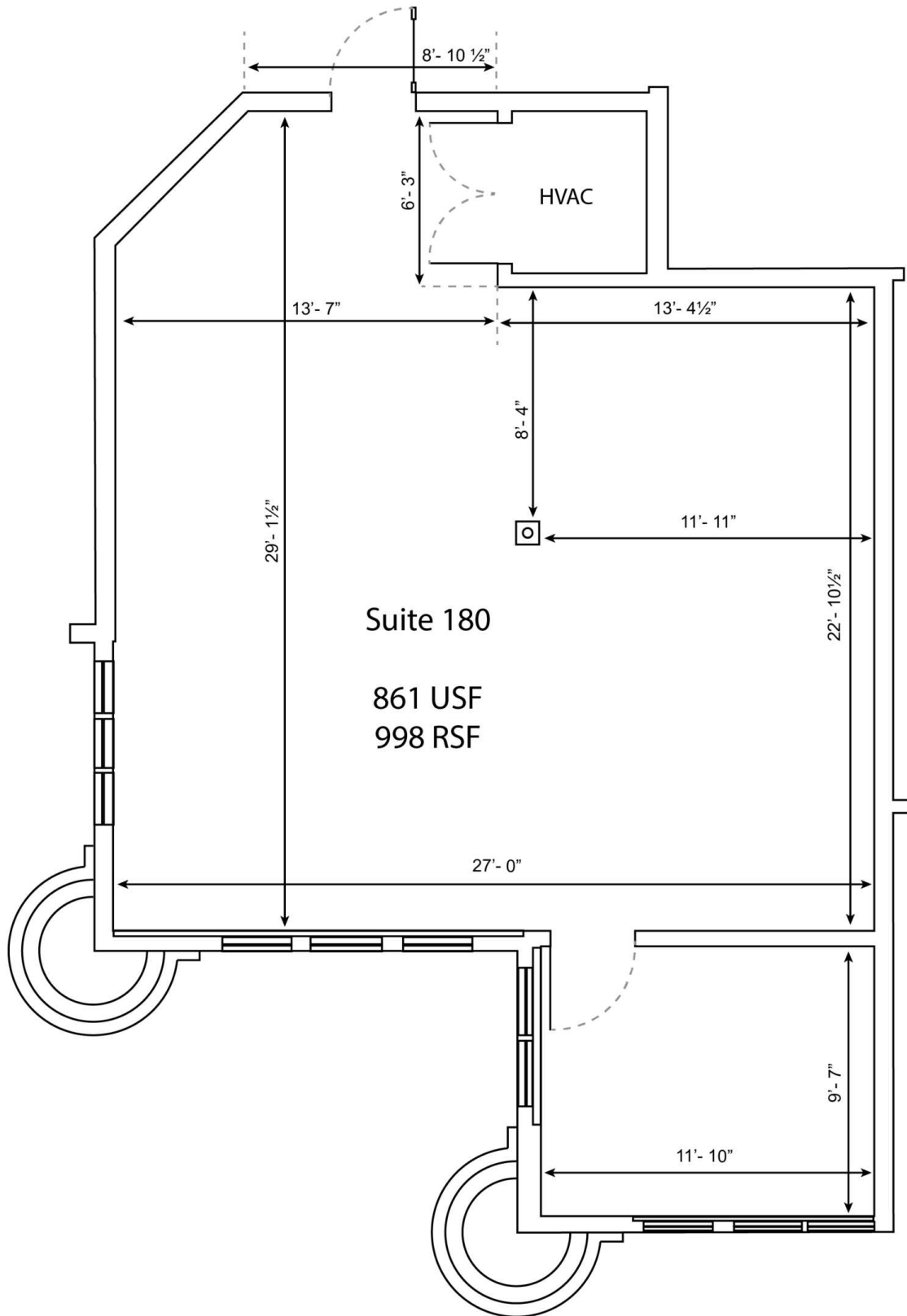




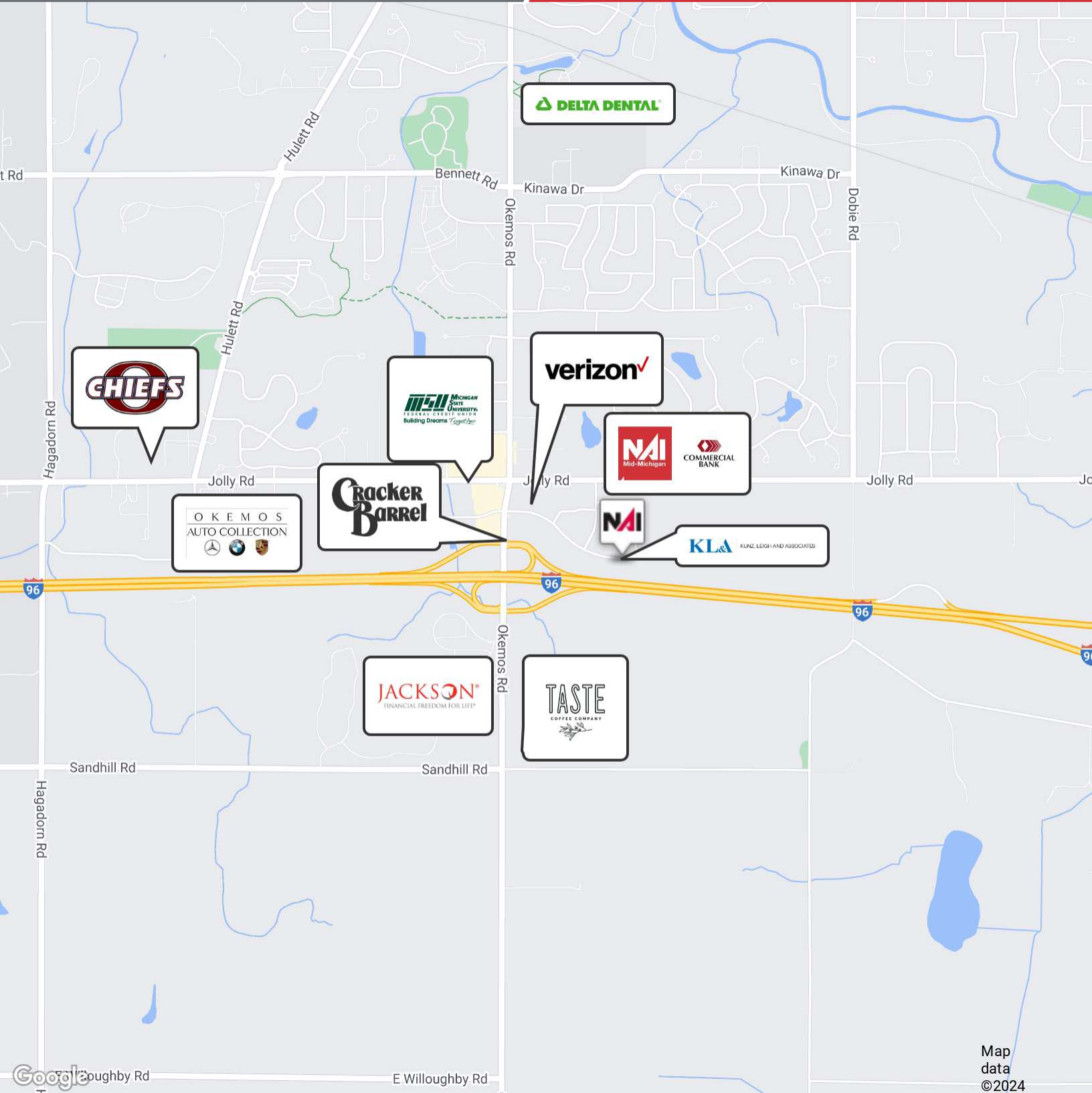
Suite 140

1,365 USF

1,579 RSF



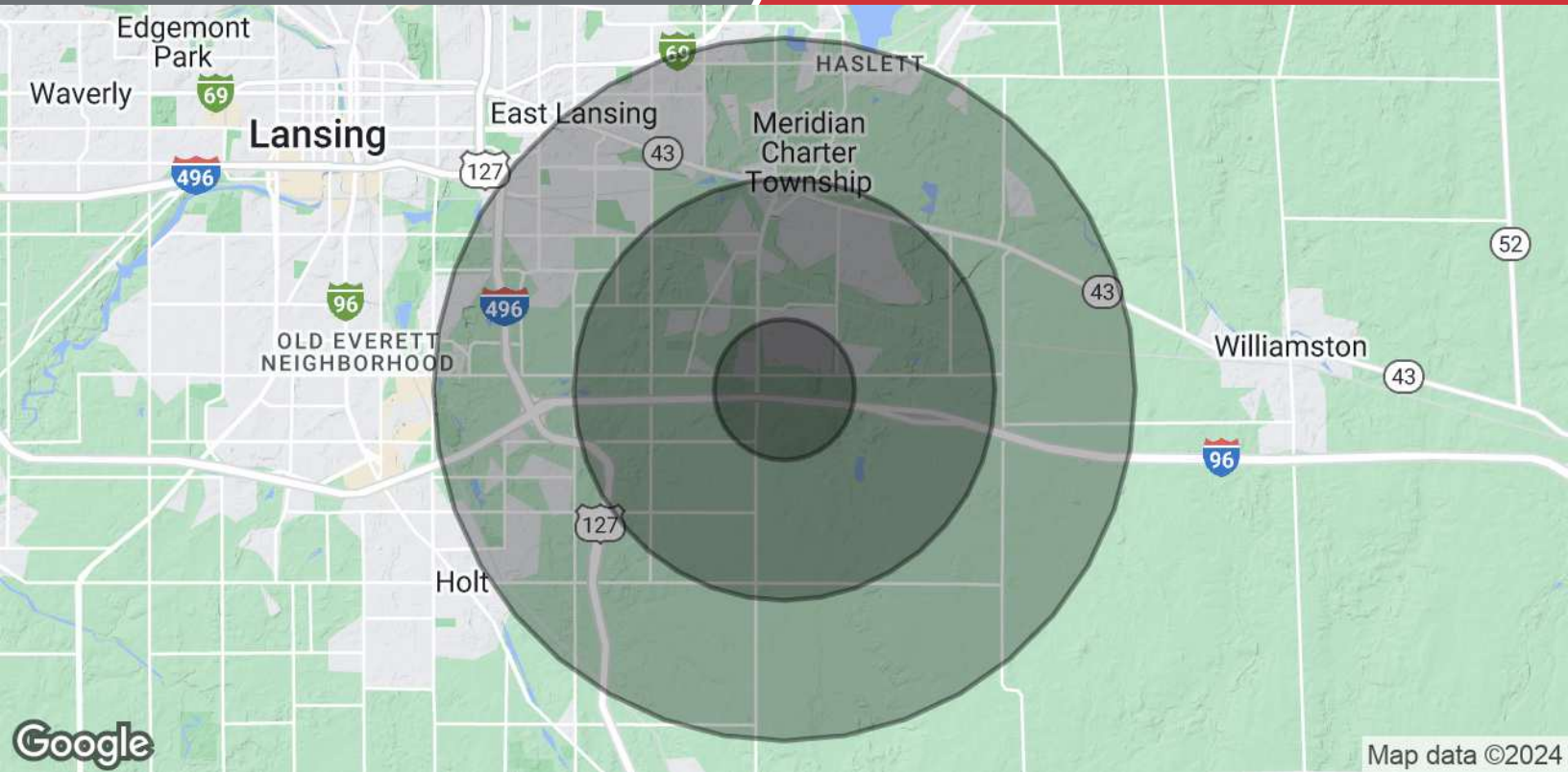
Suite 180
861 USF
998 RSF



Map data ©2024

NO WARRANTY OR REPRESENTATION, EXPRESS OR IMPLIED, IS MADE AS TO THE ACCURACY OF THE INFORMATION CONTAINED HEREIN, AND THE SAME IS SUBMITTED SUBJECT TO ERRORS, OMISSIONS, CHANGE OF PRICE, RENTAL OR OTHER CONDITIONS, PRIOR SALE, LEASE OR FINANCING, OR WITHDRAWAL WITHOUT NOTICE, AND OF ANY SPECIAL LISTING CONDITIONS IMPOSED BY OUR PRINCIPALS NO WARRANTIES OR REPRESENTATIONS ARE MADE AS TO THE CONDITION OF THE PROPERTY OR ANY HAZARDS CONTAINED THEREIN ARE INTENDED TO BE IMPLIED

2149 Jolly Road, Suite 200
Okemos, MI 48864
517 487 9222 tel
naimidmichigan.com



Population	1 Mile	3 Miles	5 Miles
Total Population	3,411	21,838	79,943
Average Age	41	40	35
Average Age (Male)	41	39	34
Average Age (Female)	41	40	36
Households & Income	1 Mile	3 Miles	5 Miles
Total Households	1,233	8,637	29,823
# of Persons per HH	2.8	2.5	2.7
Average HH Income	\$153,332	\$136,965	\$98,570
Average House Value	\$430,117	\$381,115	\$268,661

* Demographic data derived from 2020 ACS - US Census