

AVAILABLE FOR LEASE

1030 Delsea Drive | Building 9N

Westgrove Industrial Park, Westville NJ

NEWLY PAINTED AND PAVED THROUGHOUT



- **New LED lighting with sensors**
- **Newly renovated office and restrooms**
- **15' clear ceiling height throughout**

Current Availabilities

8,726 SF INDUSTRIAL FOR LEASE

(6) drive-in doors

200 amp, 3 Phase power

400 SF of newly renovated offices and restrooms

Delsea Drive frontage

Contact Information:

Scott Mertz, SIOR

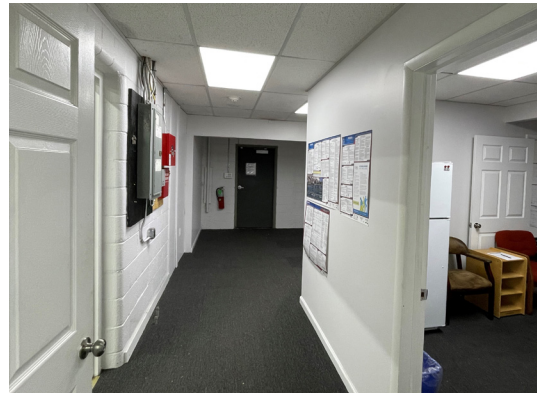
+1 856 802 6529

scott.mertz@naimertz.com

NAI Mertz | 21 Roland Avenue, Mount Laurel, NJ 08054
+1 856 234 9600 | naimertz.com

NO WARRANTY OR REPRESENTATION, EXPRESS OR IMPLIED, IS MADE AS TO THE ACCURACY OF THE INFORMATION CONTAINED HEREIN, AND THE SAME IS SUBMITTED SUBJECT TO ERRORS, OMISSIONS, CHANGE OF PRICE, RENTAL OR OTHER CONDITIONS, PRIOR SALE, LEASE OR FINANCING, OR WITHDRAWAL WITHOUT NOTICE, AND OF ANY SPECIAL LISTING CONDITIONS IMPOSED BY OUR PRINCIPALS NO WARRANTIES OR REPRESENTATIONS ARE MADE AS TO THE CONDITION OF THE PROPERTY OR ANY HAZARDS CONTAINED THEREIN ARE ANY TO BE IMPLIED.

NAIMertz



Location Information

KEY DISTANCES

I-295 0.4 Miles | 1 Minute
Route 42 2.2 Miles | 4 Minutes
NJ Turnpike (Exit 3) 5.5 Miles | 12 Minutes

Walt Whitman Bridge 4.8 Miles | 7 Minutes
Ben Franklin Bridge 8.5 Miles | 12 Minutes
Philadelphia International Airport 14.5 Miles | 16 Minutes



Aerial

