

MEDICAL/PROFESSIONAL SPACE FOR LEASE

PRICE \$69/SF OR \$7,648
APPROX SIZE 1,330 RSF
TERM NEGOTIABLE
POSSESSION IMMEDIATE

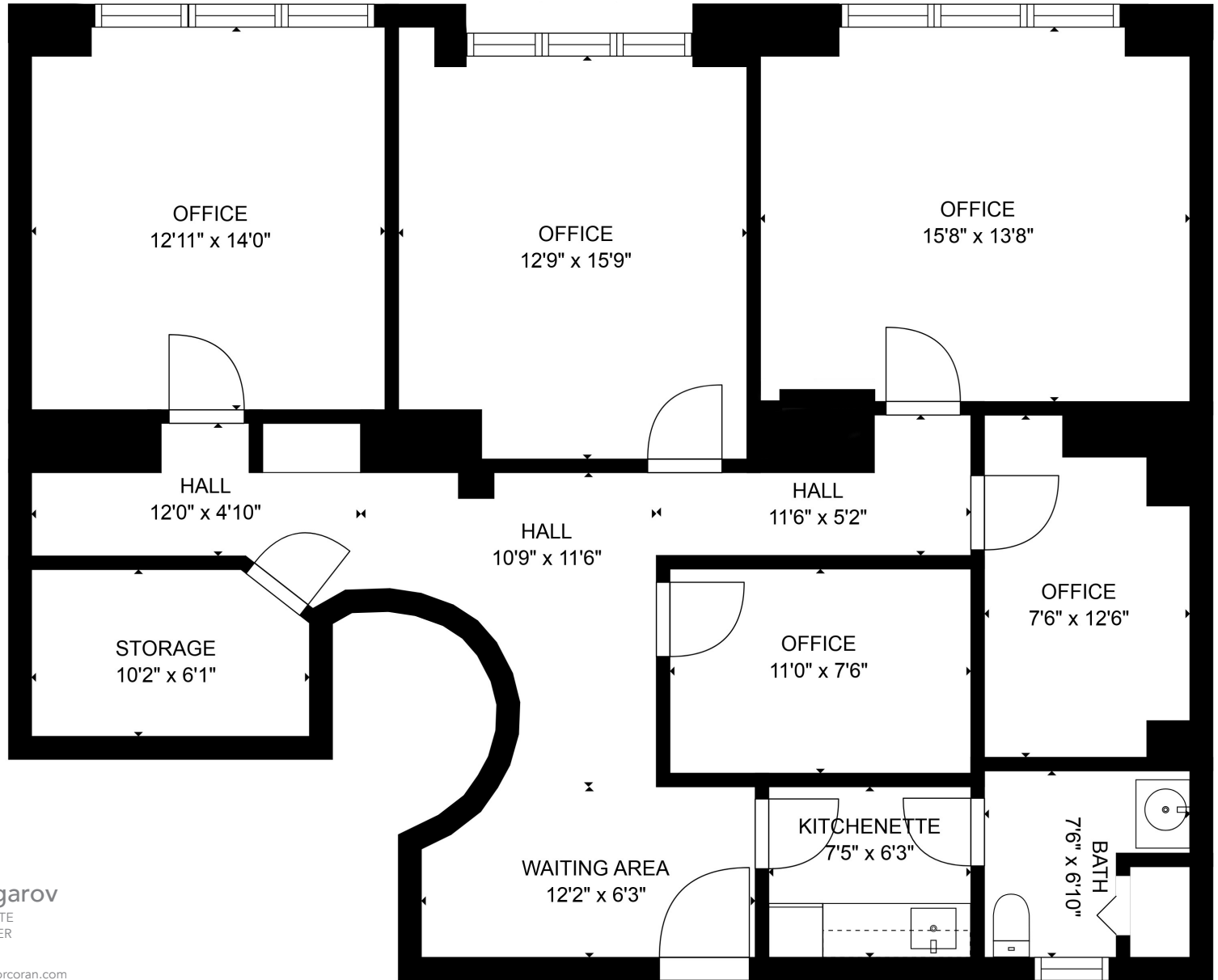


241 EAST 86TH STREET, 2C
UPPER WEST SIDE, MANHATTAN, NY 10028

SUITE 2C

APPROX 1,330 SF

- FIVE OFFICE/CONSULTS
- WAITING AREA
- FILE/STORAGE ROOM
- RESTROOM
- KITCHENETTE
- CAN BE COMBINED WITH SUITE 2B/C TOTALLY APPROXIMATELY 2,907 SQ FT (PENDING OWNER'S APPROVAL)
- CEILINGS UP TO 11' 6"
- PRIME 86TH STREET EXPOSURE
- LOCATED BETWEEN SECOND AND THIRD AVENUES
- ADAPTABLE TO MANY MEDICAL SPECIALTIES OR PROFESSIONAL SERVICES



FLOOR PLAN FOR ILLUSTRATIVE PURPOSES ONLY. ACTUAL SIZE AND DIMENSIONS MAY VARY.

Paul L Wexler

LICENSED ASSOCIATE
REAL ESTATE BROKER

P: 212.836.1075
E: PLW@corcoran.com

Josef Yadgarov

LICENSED ASSOCIATE
REAL ESTATE BROKER

P: 212.836.1097
E: josef.yadgarov@corcoran.com

Alisia Ramlochan

LICENSED ASSOCIATE
REAL ESTATE BROKER

P: 212.893.1450
E: alisia.ramlochan@corcoran.com

Elliot Dennis

LICENSED REAL ESTATE
SALESPERSON

P: 212.893.1746
E: elliot.dennis@corcoran.com

Kurt Herold

LICENSED ASSOCIATE
REAL ESTATE BROKER

P: 212.323.3817
E: kherold@corcoran.com

Cosmin Bitu

LICENSED ASSOCIATE
REAL ESTATE SALESPERSON

P: 917.602.5754
E: cosmin.bitu@corcoran.com