

RETAIL SPACE

# FOR LEASE

2012 – 2040 N. SANTA FE AVE., COMPTON, CA 90221



## Neighboring



## Property Information

Location: 2032 N. Santa Fe Ave.  
Compton, CA 90221

Size: Approx. 675 sq.ft.

Rent: \$1.00/sq./month, NNN

Available: Immediately

## Property Highlights

- Convenient access to Fwy 10 & Fwy 710
- Great local neighborhood strip mall with good tenant mix
- Existing beauty salon business  
DO NOT DISTURB TENANT

**For More Information, Contact:**

**CNC properties**  
3660 Wilshire Blvd.  
Suite 1125  
Los Angeles, CA 90010  
www.cnccre.com

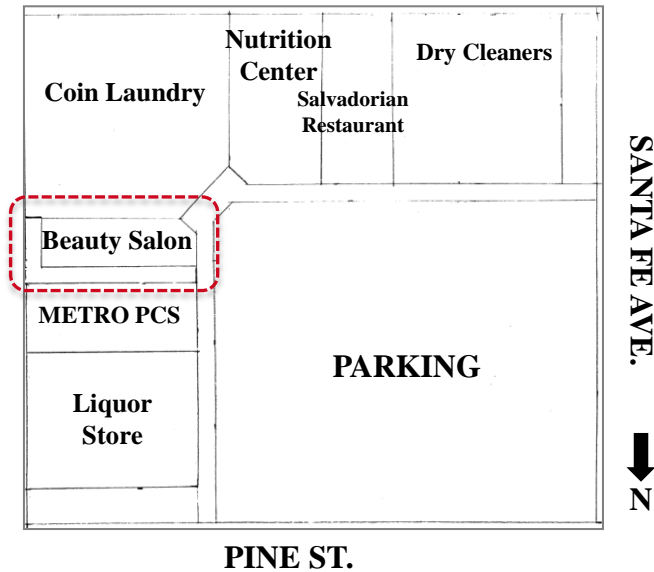
**Howard Chang**  
213.788.3357  
hchang@cnccre.com  
CA BRE Lic # 01700619

**Michael Cho**  
213.788.3357  
mcho@cnccre.com  
CA BRE Lic # 01779527

RETAIL SPACE **FOR LEASE**

2012 – 2040 N. SANTA FE AVE., COMPTON, CA 90221

Site Plan



For More Information, Contact:

**CNC properties**  
3660 Wilshire Blvd.  
Suite 1125  
Los Angeles, CA 90010  
www.cnc cre.com

**Howard Chang**  
213.788.3357  
hchang@cnc cre.com  
CA BRE Lic # 01700619

**Michael Cho**  
213.788.3357  
mcho@cnc cre.com  
CA BRE Lic # 01779527

# RETAIL SPACE FOR LEASE

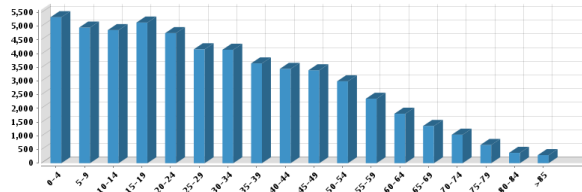
2012 – 2040 N. SANTA FE AVE., COMPTON, CA 90221

## Demographic Summary Report

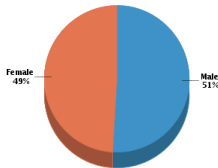
### Population Summary

Estimated Population:	54,602	Number of Households:	11,044
Population Growth (since 2010):	0.9%	Household Size (ppl):	4
Population Density (ppl / mile):	10,256	Households w/ Children:	7,651
Median Age:	26.79		

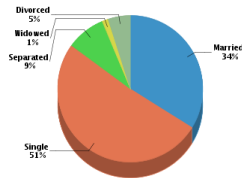
### Age



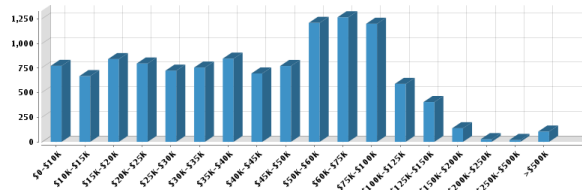
### Gender



### Marital Status



### Household Income



Average Household Income:	\$47,602	Average Per Capita Income:	\$10,621
---------------------------	----------	----------------------------	----------

**For More Information, Contact:**

**CNC properties**  
3660 Wilshire Blvd.  
Suite 1125  
Los Angeles, CA 90010  
www.cnccre.com

**Howard Chang**  
213.788.3357  
hchang@cnccre.com  
CA BRE Lic # 01700619

**Michael Cho**  
213.788.3357  
mcho@cnccre.com  
CA BRE Lic # 01779527

RETAIL SPACE **FOR LEASE**

2012 – 2040 N. SANTA FE AVE., COMPTON, CA 90221

**Aerial Map**



**For More Information, Contact:**

**CNC properties**  
3660 Wilshire Blvd.  
Suite 1125  
Los Angeles, CA 90010  
www.cnccre.com

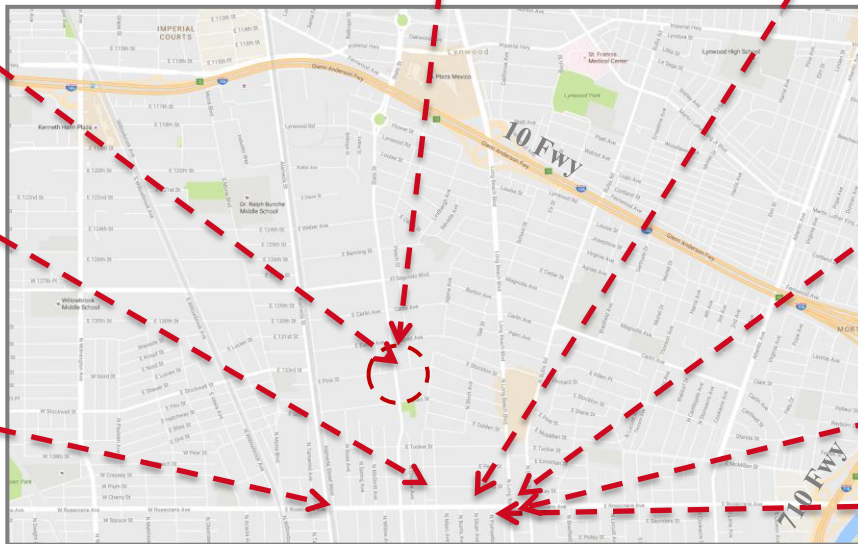
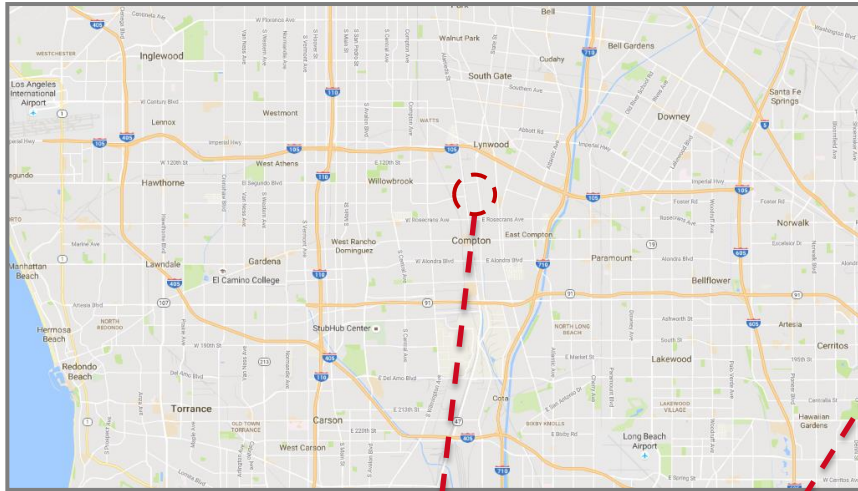
**Howard Chang**  
213.788.3357  
hchang@cnccre.com  
CA BRE Lic # 01700619

**Michael Cho**  
213.788.3357  
mcho@cnccre.com  
CA BRE Lic # 01779527

RETAIL SPACE **FOR LEASE**

**2012 – 2040 N. SANTA FE AVE., COMPTON, CA 90221**

**Property Location**



Shoes. Style. Selection.®



**For More Information, Contact:**

**CNC properties**  
3660 Wilshire Blvd.  
Suite 1125  
Los Angeles, CA 90010  
www.cnccre.com

**Howard Chang**  
213.788.3357  
hchang@cnccre.com  
CA BRE Lic # 01700619

**Michael Cho**  
213.788.3357  
mcho@cnccre.com  
CA BRE Lic # 01779527