

OFFICE FOR LEASE

EAST HILLS OFFICE PARK

180 NORTH RIVERVIEW DRIVE | ANAHEIM, CALIFORNIA



BARRY WALSH

Vice President | Partner

714.935.2309

Lic. #01213417

bwalsh@voitco.com

MIKE BOOMER

Vice President | Partner

714.935.2344

Lic. #01209091

mboomer@voitco.com

Voit

REAL ESTATE SERVICES

2400 E. Katella Avenue, Suite 750, Anaheim, CA 92806 • 714.978.7880 • 714.978.9431 Fax

www.VoitCo.com

The information contained herein has been obtained from sources we deem reliable. While we have no reason to doubt its accuracy, we do not guarantee it. Licensed as Real Estate Salespersons by the DRE.
©2023 Voit Real Estate Services, Inc. All Rights Reserved. License #01991785.

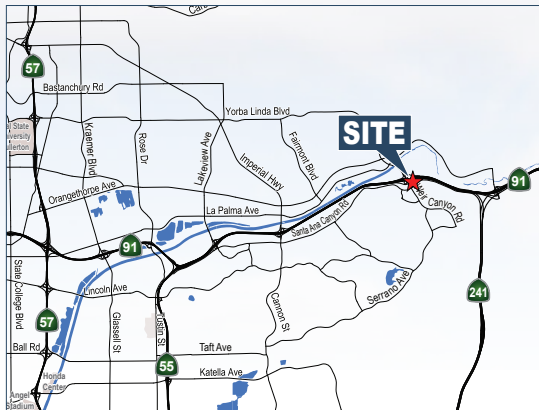
OFFICE FOR LEASE

EAST HILLS OFFICE PARK

180 NORTH RIVERVIEW DRIVE | ANAHEIM, CALIFORNIA

PROPERTY FEATURES

- Premier Anaheim Hills Office Complex
- High Image Building
- Major Lobby and Common Area Refurbishment Completed in 2012
- Extensive Glass Line Throughout Suites
- Lobby Door Entry Reception, Large Conference Room, 14 Private Offices, Break Area and Large Open Space
- Scenic Views
- Elevator Served
- 4:1 Surface Parking
- Numerous Retail Amenities; 10 Restaurants and 2 Regional Shopping Centers
- Immediate Freeway Access to South/ Central Orange County via 241 Toll Road and Riverside or Los Angeles via 91 Freeway



AVAILABLE SUITES

Second Floor	Suite 240	Available	2,089 RSF	\$2.59 PSF	Perimeter Pvt. offices, kitchenette, open area, extensive window line
Third Floor	Suite 360	Available	±1,869 RSF	\$2.59 PSF	3 offices, reception, conference room, open

BARRY WALSH

Vice President | Partner
714.935.2309
Lic. #01213417
bwalsh@voitco.com

MIKE BOOMER

Vice President | Partner
714.935.2344
Lic. #01209091
mboomer@voitco.com

Voit
REAL ESTATE SERVICES

2400 E. Katella Avenue, Suite 750, Anaheim, CA 92806 • 714.978.7880 • 714.978.9431 Fax

www.VoitCo.com

The information contained herein has been obtained from sources we deem reliable. While we have no reason to doubt its accuracy, we do not guarantee it. Licensed as Real Estate Salespersons by the DRE.
©2023 Voit Real Estate Services, Inc. All Rights Reserved. License #01991785.

OFFICE FOR LEASE

EAST HILLS OFFICE PARK

180 NORTH RIVERVIEW DRIVE | ANAHEIM, CALIFORNIA



SUITE 240

AVAILABLE SUITES

Second Floor	Suite 240	Available	2,089 RSF	\$2.59 PSF	Perimeter Pvt. offices, kitchenette, open area, extensive window line
---------------------	-----------	-----------	-----------	------------	---

BARRY WALSH

Vice President | Partner
714.935.2309
Lic. #01213417
bwalsh@voitco.com

MIKE BOOMER

Vice President | Partner
714.935.2344
Lic. #01209091
mboomer@voitco.com

Voit
REAL ESTATE SERVICES

2400 E. Katella Avenue, Suite 750, Anaheim, CA 92806 • 714.978.7880 • 714.978.9431 Fax

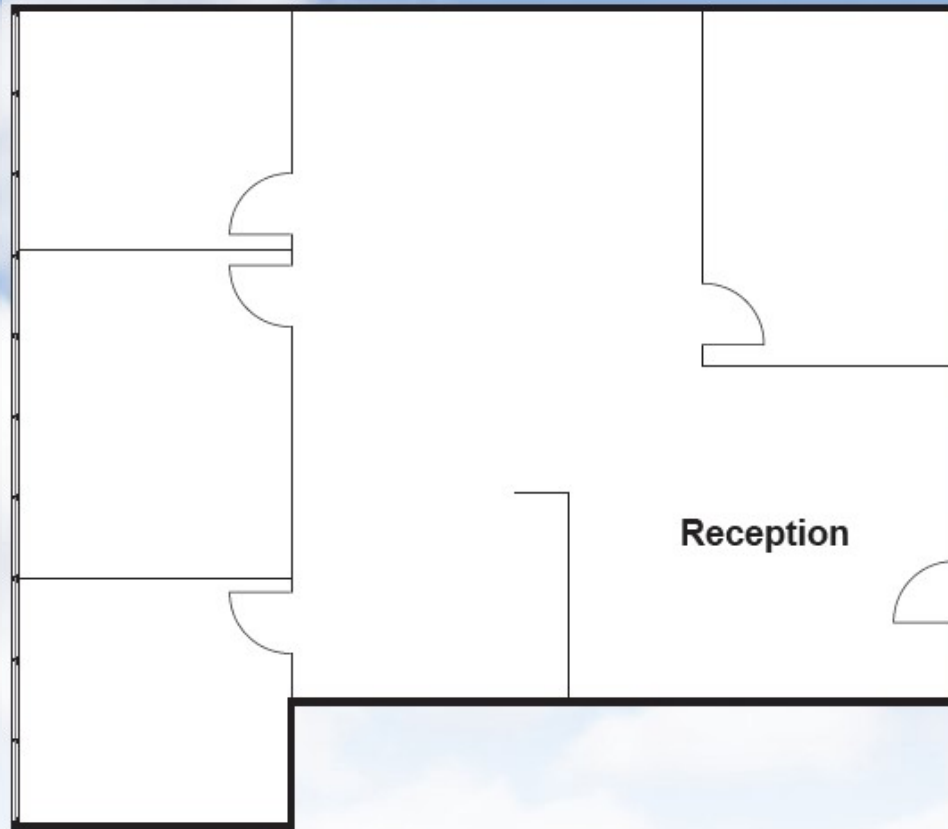
www.VoitCo.com

The information contained herein has been obtained from sources we deem reliable. While we have no reason to doubt its accuracy, we do not guarantee it. Licensed as Real Estate Salespersons by the DRE.
©2023 Voit Real Estate Services, Inc. All Rights Reserved. License #01991785.

OFFICE FOR LEASE

EAST HILLS OFFICE PARK

180 NORTH RIVERVIEW DRIVE | ANAHEIM, CALIFORNIA



SUITE 360



AVAILABLE SUITES

Third Floor	Suite 360	±1,869 RSF	\$2.59 PSF	3 offices, reception, conference room storage
--------------------	-----------	------------	------------	---

BARRY WALSH

Vice President | Partner
714.935.2309
Lic. #01213417
bwalsh@voitco.com

MIKE BOOMER

Vice President | Partner
714.935.2344
Lic. #01209091
mboomer@voitco.com

