

THE SEYMOUR

211 N 1ST ST. MINNEAPOLIS, MN 55401



FOR LEASE



PROPERTY FEATURES

Located in the heart of the exciting North Loop neighborhood, steps from **Whole Foods, Red Cow, Porzana, Cooks/Bellcoeur, Lululemon, Fair Trade Coffee, the Hewing Hotel** and more.

Ceiling Heights	12' to 14'
Lease Rate	\$17.00 - \$21.00 PSF Net
Operating Expenses	\$9.47 PSF
Real Estate Taxes	\$3.40 PSF
Total	\$12.87 PSF (2024 est.)

SPACE AVAILABLE

SUITE 415 3,117 RSF	SUITE 455 6,417 RSF	
SUITE 300 3,011 RSF	SUITE 345 2,988 RSF	SUITE 370 3,876 RSF
SUITE 250 5,275 RSF	SUITE 285 492 RSF	SUITE 290 692 RSF



Katie Tufford
Senior Director
+1 612 413 5007
katie.tufford@cushwake.com

Tom Tracy
Executive Director
+1 612 280 3299
tom.tracy@cushwake.com

Harrison Rust
Associate
+1 651 331 6425
harrison.rust@cushwake.com



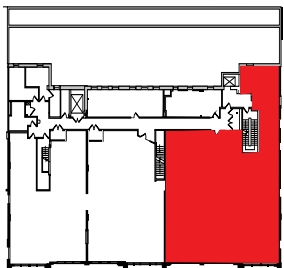
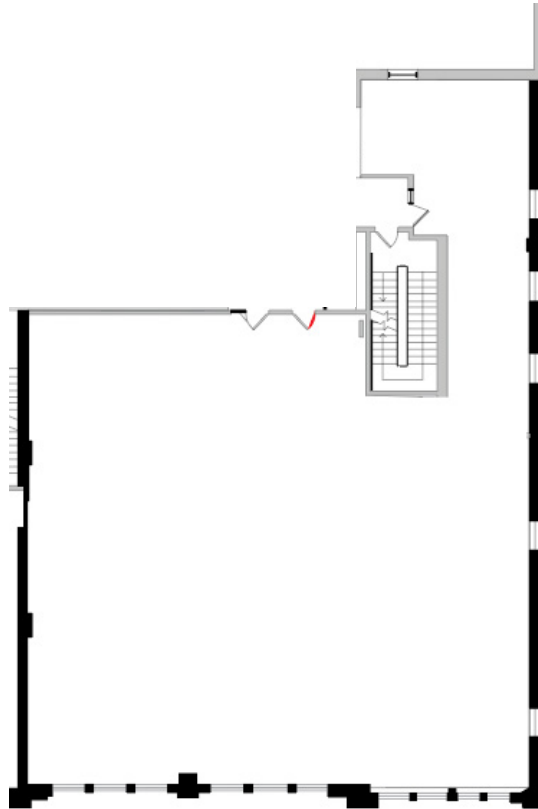
©2024 Cushman & Wakefield. All rights reserved. The information contained in this communication is strictly confidential. This information has been obtained from sources believed to be reliable but has not been verified. NO WARRANTY OR REPRESENTATION, EXPRESS OR IMPLIED, IS MADE AS TO THE CONDITION OF THE PROPERTY (OR PROPERTIES) REFERENCED HEREIN OR AS TO THE ACCURACY OR COMPLETENESS OF THE INFORMATION CONTAINED HEREIN, AND SAME IS SUBMITTED SUBJECT TO ERRORS, OMISSIONS, CHANGE OF PRICE, RENTAL OR OTHER CONDITIONS, WITHDRAWAL WITHOUT NOTICE, AND TO ANY SPECIAL LISTING CONDITIONS IMPOSED BY THE PROPERTY OWNER(S). ANY PROJECTIONS, OPINIONS OR ESTIMATES ARE SUBJECT TO UNCERTAINTY AND DO NOT SIGNIFY CURRENT OR FUTURE PROPERTY PERFORMANCE.

THE SEYMOUR

211 N 1ST STREET, MINNEAPOLIS, MN

SUITE 250

5,275 RSF



FOR MORE INFORMATION, PLEASE CONTACT:

TOM TRACY

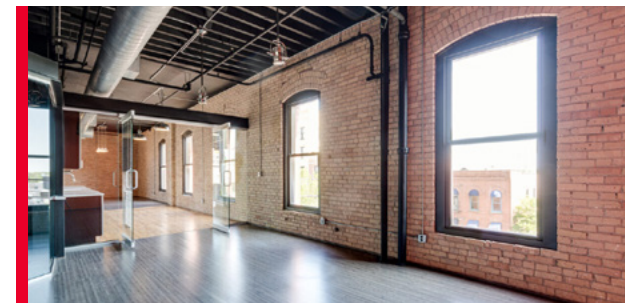
Executive Director
+1 612 280 3299
tom.tracy@cushwake.com

KATIE TUFFORD

Senior Director
+1 612 413 5007
katie.tufford@cushwake.com

HARRISON RUST

Associate
+1 651 331 6425
harrison.rust@cushwake.com

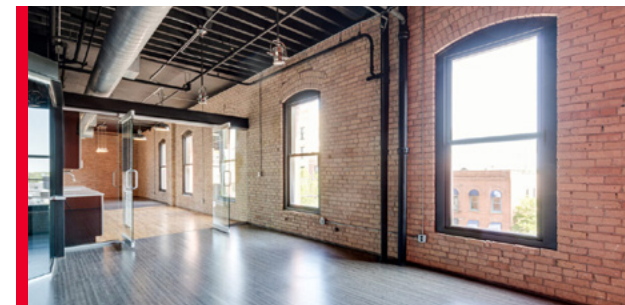
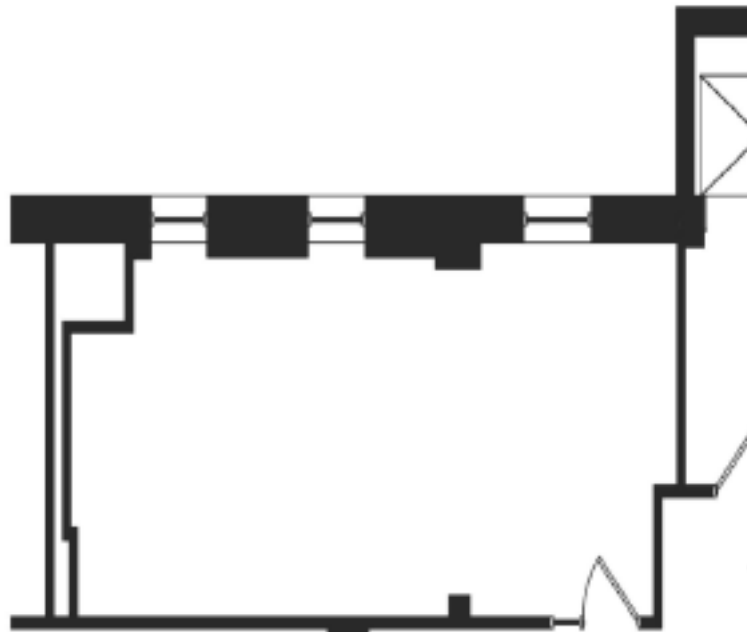
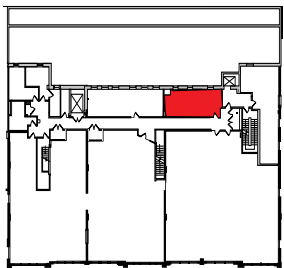


THE SEYMOUR

211 N 1ST STREET, MINNEAPOLIS, MN

SUITE 285

492 RSF



FOR MORE INFORMATION, PLEASE CONTACT:

TOM TRACY

Executive Director
+1 612 280 3299
tom.tracy@cushwake.com

KATIE TUFFORD

Senior Director
+1 612 413 5007
katie.tufford@cushwake.com

HARRISON RUST

Associate
+1 651 331 6425
harrison.rust@cushwake.com

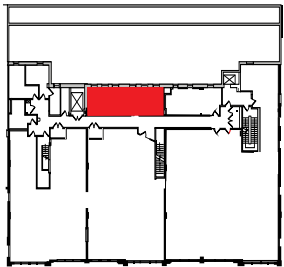
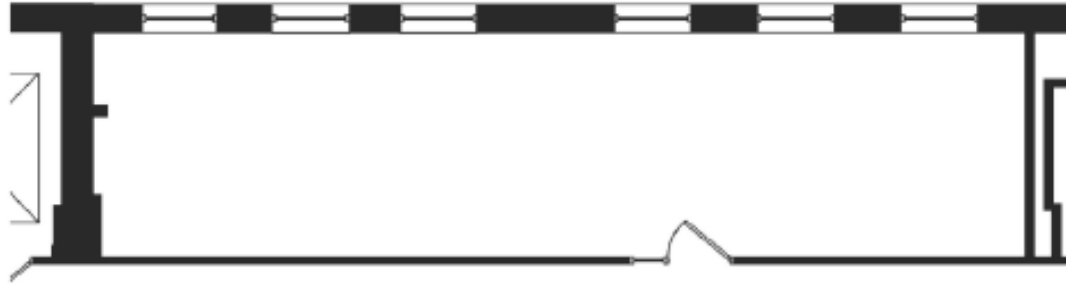


THE SEYMOUR

211 N 1ST STREET, MINNEAPOLIS, MN

SUITE 290

692 RSF



FOR MORE INFORMATION, PLEASE CONTACT:

TOM TRACY

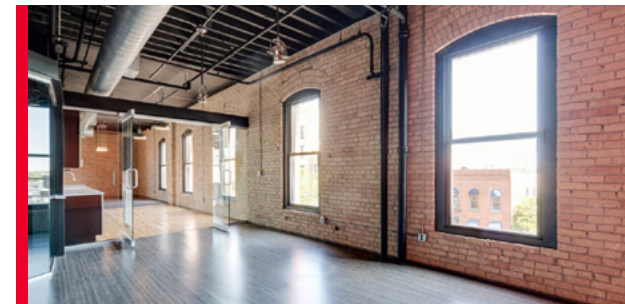
Executive Director
+1 612 280 3299
tom.tracy@cushwake.com

KATIE TUFFORD

Senior Director
+1 612 413 5007
katie.tufford@cushwake.com

HARRISON RUST

Associate
+1 651 331 6425
harrison.rust@cushwake.com

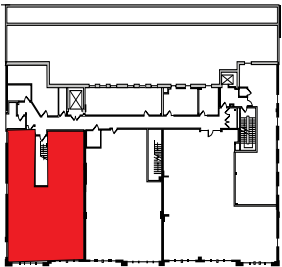
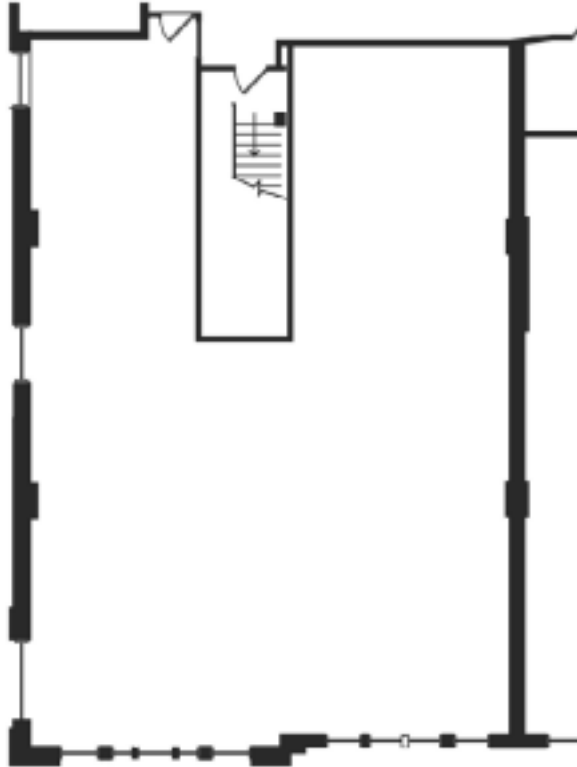


THE SEYMOUR

211 N 1ST STREET, MINNEAPOLIS, MN

SUITE 300

3,011 RSF



FOR MORE INFORMATION, PLEASE CONTACT:

TOM TRACY

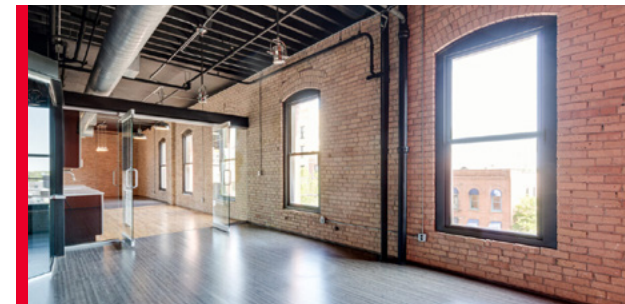
Executive Director
+1 612 280 3299
tom.tracy@cushwake.com

KATIE TUFFORD

Senior Director
+1 612 413 5007
katie.tufford@cushwake.com

HARRISON RUST

Associate
+1 651 331 6425
harrison.rust@cushwake.com

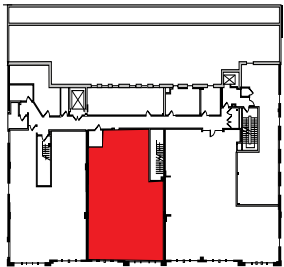
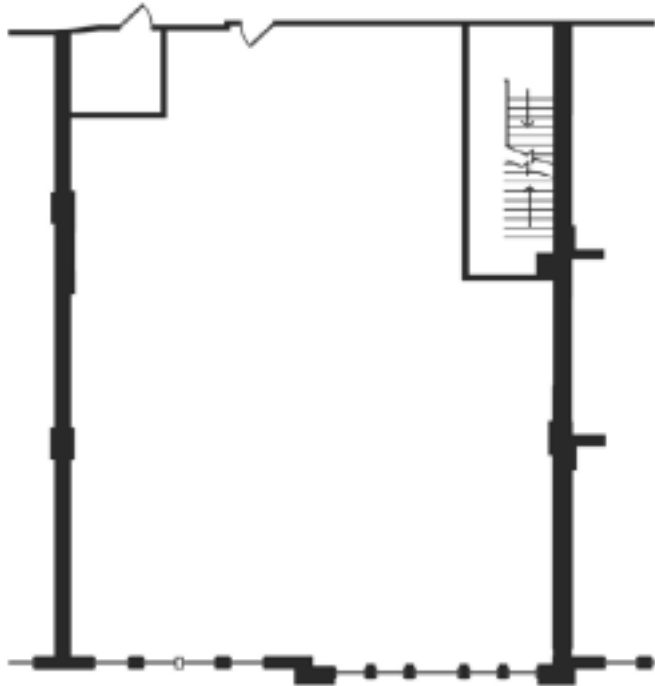


THE SEYMOUR

211 N 1ST STREET, MINNEAPOLIS, MN

SUITE 345

2,988 RSF



FOR MORE INFORMATION, PLEASE CONTACT:

TOM TRACY

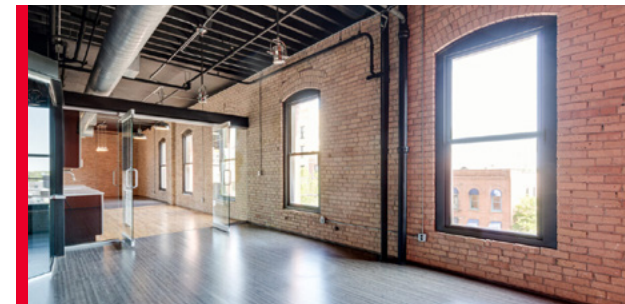
Executive Director
+1 612 280 3299
tom.tracy@cushwake.com

KATIE TUFFORD

Senior Director
+1 612 413 5007
katie.tufford@cushwake.com

HARRISON RUST

Associate
+1 651 331 6425
harrison.rust@cushwake.com

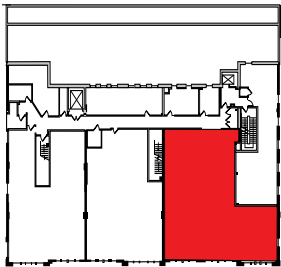
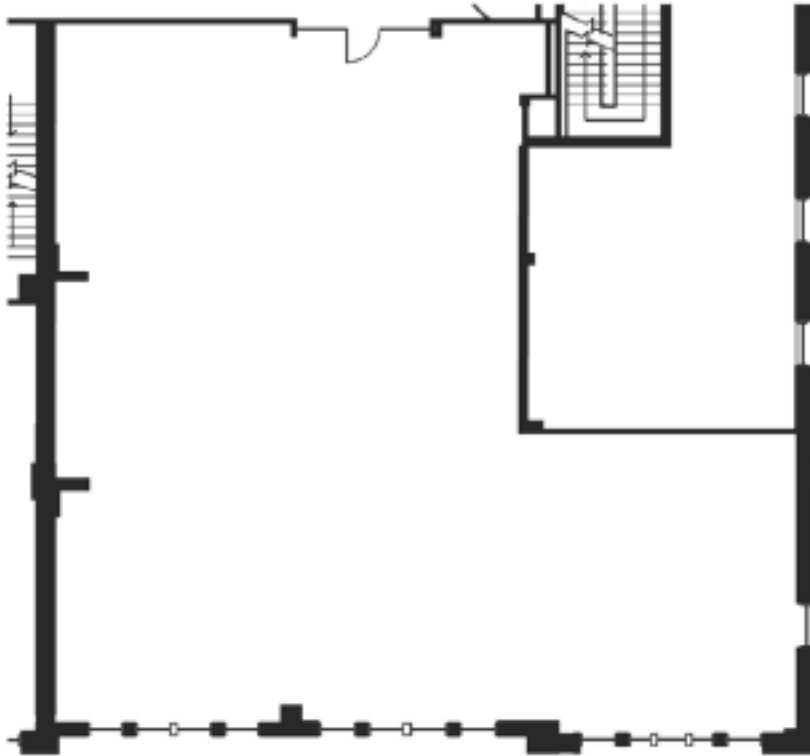


THE SEYMOUR

211 N 1ST STREET, MINNEAPOLIS, MN

SUITE 370

3,876 RSF



FOR MORE INFORMATION, PLEASE CONTACT:

TOM TRACY

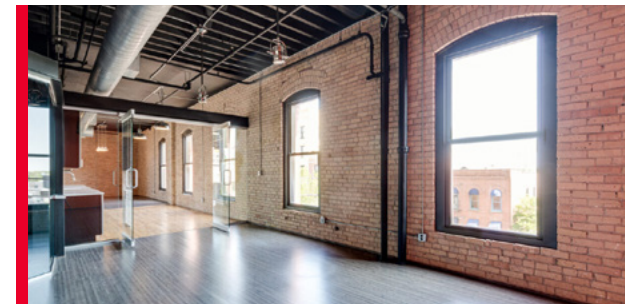
Executive Director
+1 612 280 3299
tom.tracy@cushwake.com

KATIE TUFFORD

Senior Director
+1 612 413 5007
katie.tufford@cushwake.com

HARRISON RUST

Associate
+1 651 331 6425
harrison.rust@cushwake.com

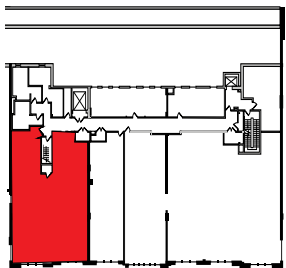
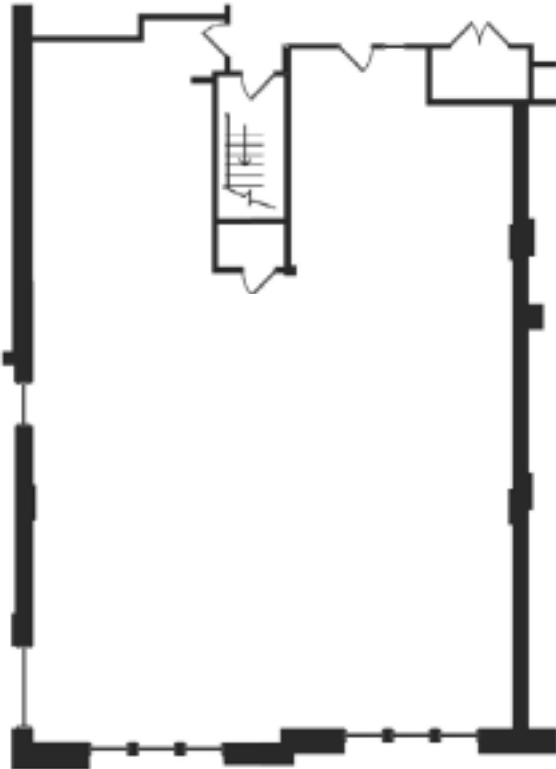


THE SEYMOUR

211 N 1ST STREET, MINNEAPOLIS, MN

SUITE 415/425

3,117 RSF



FOR MORE INFORMATION, PLEASE CONTACT:

TOM TRACY

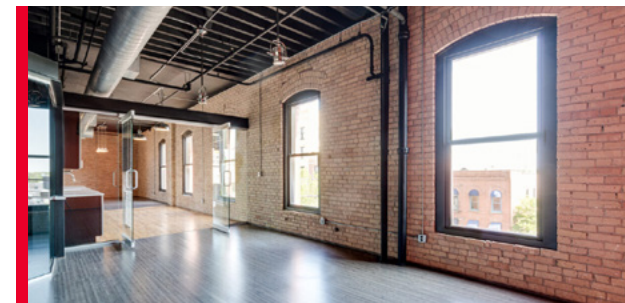
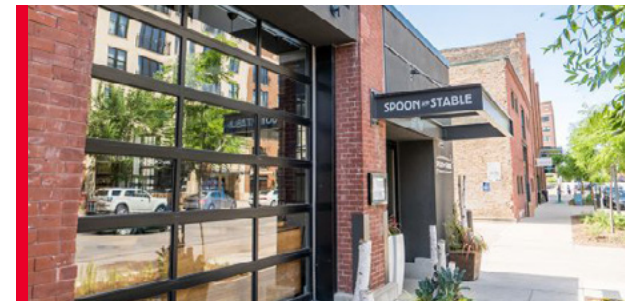
Executive Director
+1 612 280 3299
tom.tracy@cushwake.com

KATIE TUFFORD

Senior Director
+1 612 413 5007
katie.tufford@cushwake.com

HARRISON RUST

Associate
+1 651 331 6425
harrison.rust@cushwake.com

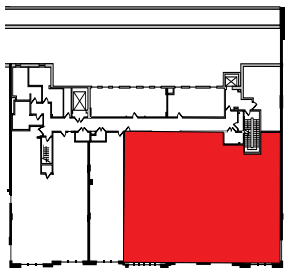
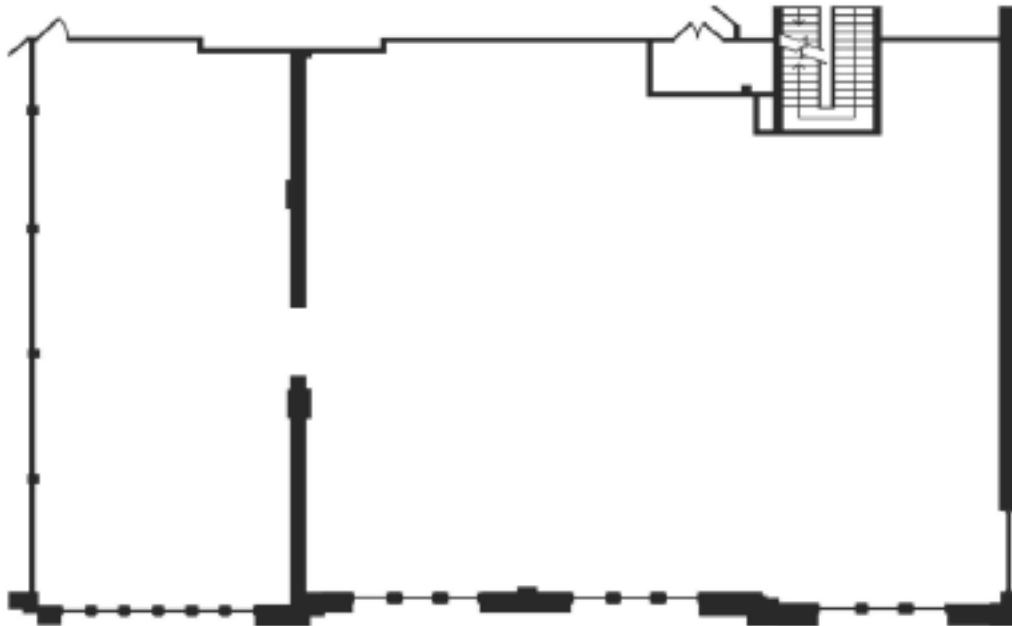


THE SEYMOUR

211 N 1ST STREET, MINNEAPOLIS, MN

SUITE 455

6,417 RSF



FOR MORE INFORMATION, PLEASE CONTACT:

TOM TRACY

Executive Director
+1 612 280 3299
tom.tracy@cushwake.com

KATIE TUFFORD

Senior Director
+1 612 413 5007
katie.tufford@cushwake.com

HARRISON RUST

Associate
+1 651 331 6425
harrison.rust@cushwake.com

