

EYDE DEVELOPMENT

2365 WOODLAKE DRIVE
OKEMOS, MI 48864



FOR LEASE

BUILDING SQUARE FOOTAGE:

- 14,490 sf

ADVANTAGES:

- High Demand Area
- Easy Access to I-96



FEATURES/AMENITIES:

- Free on site parking available

STRATEGIC LOCATION:

- Strategically located near the corner of Jolly Road and Okemos Road near the I-96 interchange.
- Close proximity to medical and educational facilities
- Close proximity to restaurants, dry cleaning, gyms, grocery and retail



CONTACT

Eyde Development

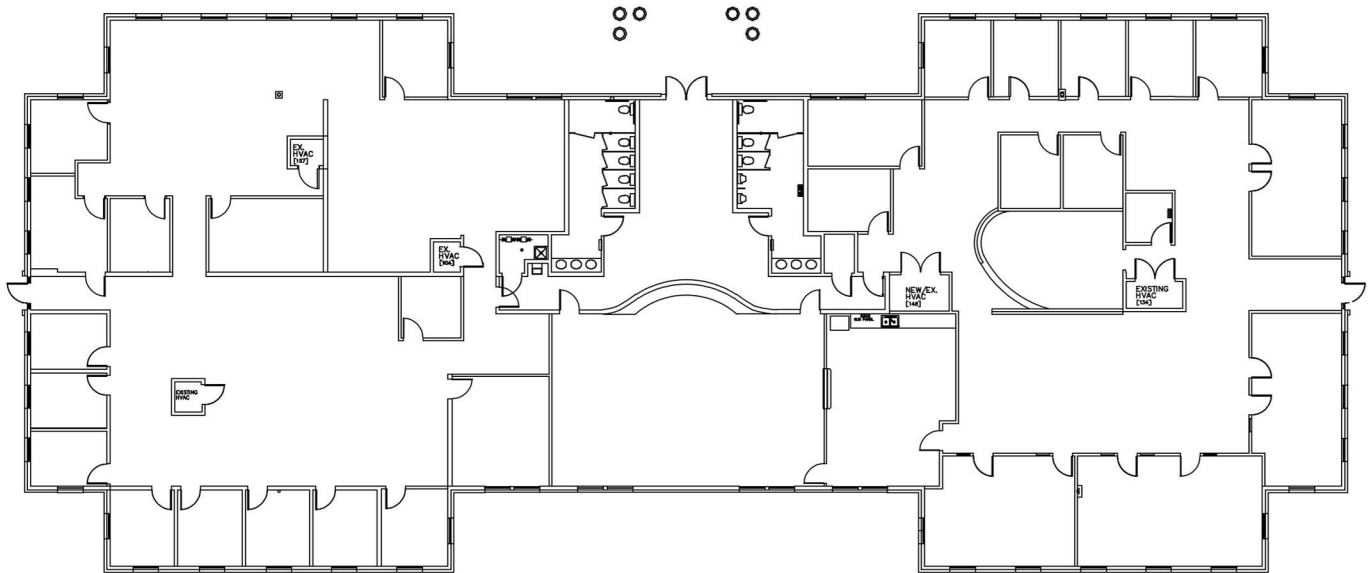
517-903-3933 | eyde.com



EYDE DEVELOPMENT

2365 WOODLAKE DRIVE
OKEMOS, MI 48864

FLOORPLAN



CONTACT

Eyde Development

517-903-3933 | eyde.com

| Eyde Development | 300 S. Washington Square #400 Lansing, MI 48933 |
| Phone: 517-903-3933 | Fax: 517-484-5695 | www.eyde.com |