

POINT WEST COMMERCE CENTRE

1545 RIVER PARK DRIVE, SACRAMENTO, CA



CLASS A OFFICES MINUTES
FROM DOWNTOWN @ HWY 80
& ARDEN FAIR MALL

NEWMARK



Exclusively Marketed By: _____

Jack Blackmon
916.494.2349
jack.blackmon@nrmk.com
CA RE License #01999561

Lucas Lugo
916.569.2322
lucas.lugo@nrmk.com
CA RE License #01916673

Jodie Robinson
916.569.2318
jodie.robinson@nrmk.com
CA RE License #02214357

POINT WEST COMMERCE CENTRE

1545 RIVER PARK DRIVE
SACRAMENTO, CA

PROPERTY HIGHLIGHTS



Onsite conference room



Fitness center with showers and lockers



Shaded decks and patios



4.5/1,000 parking



Short walk to Arden Fair Mall



Located within minutes of Sacramento's CBD



Direct access to the Capital City Freeway



Expansive and contiguous windowline



Prominent identity and freeway visibility



Café next door for breakfast and lunch



- Concierge Services for personal and professional assistance
- Moving concierge for data cabling, and moving facilitation
- Construction management team
- Building Engineers with advanced experience in building systems
- Professional Property Management services with local representatives

POINT WEST COMMERCE CENTRE

1545 RIVER PARK DRIVE
SACRAMENTO, CA

FIVE-STORY CLASS A OFFICE BUILDING

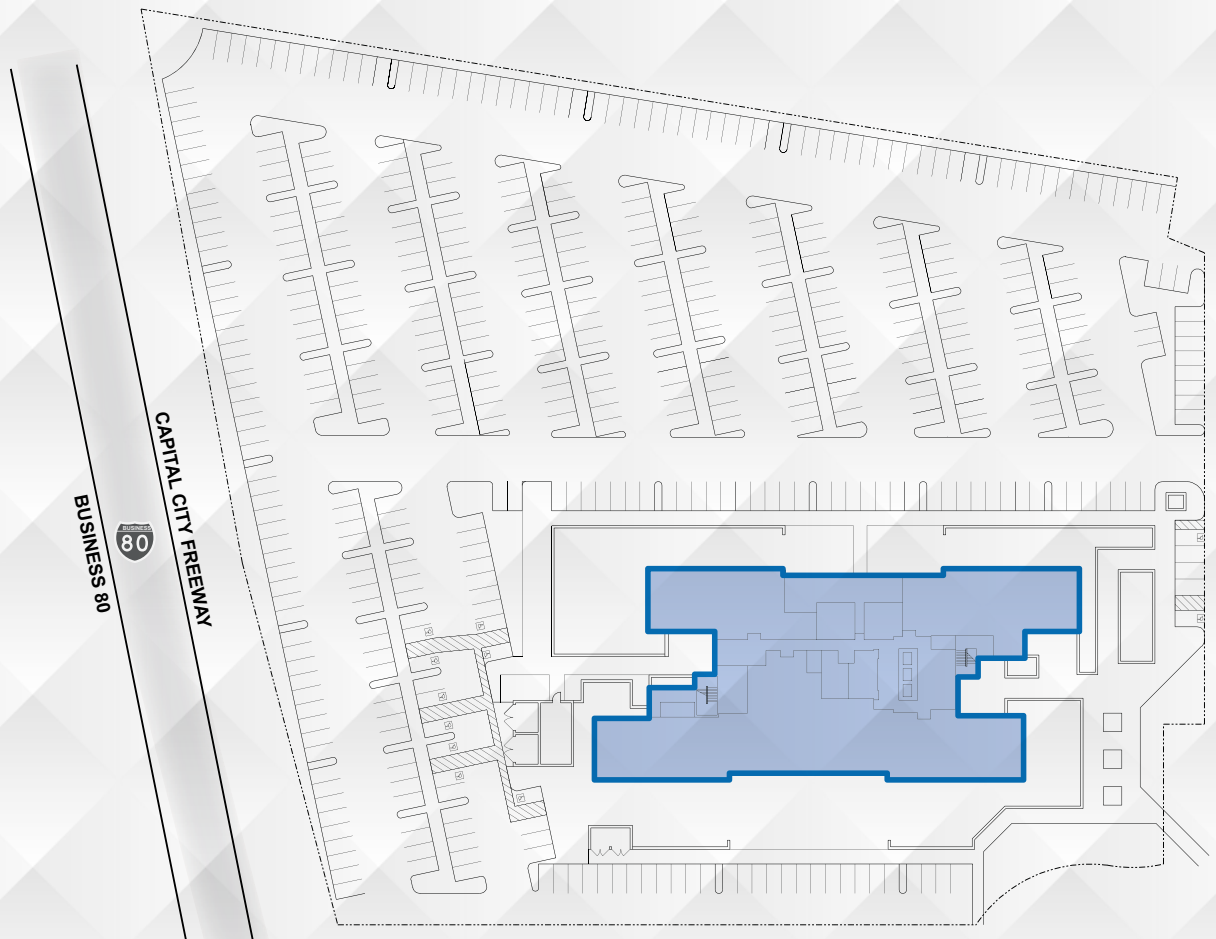


POINT WEST COMMERCE CENTRE

1545 RIVER PARK DRIVE
SACRAMENTO, CA



SITE PLAN



POINT WEST COMMERCE CENTRE

1545 RIVER PARK DRIVE
SACRAMENTO, CA

AMENITIES MAP

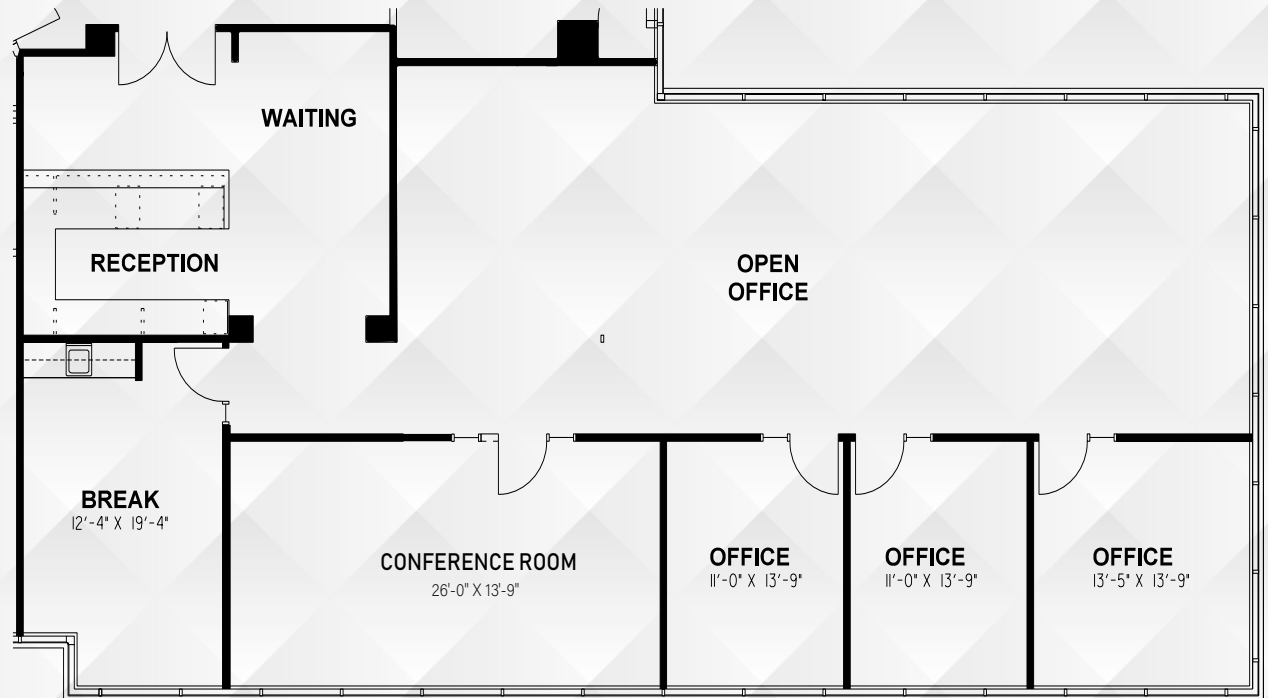
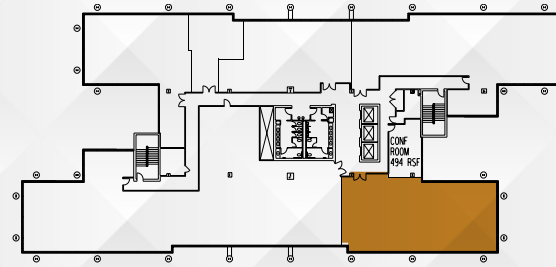


POINT WEST COMMERCE CENTRE

1545 RIVER PARK DRIVE
SACRAMENTO, CA



FLOOR PLANS



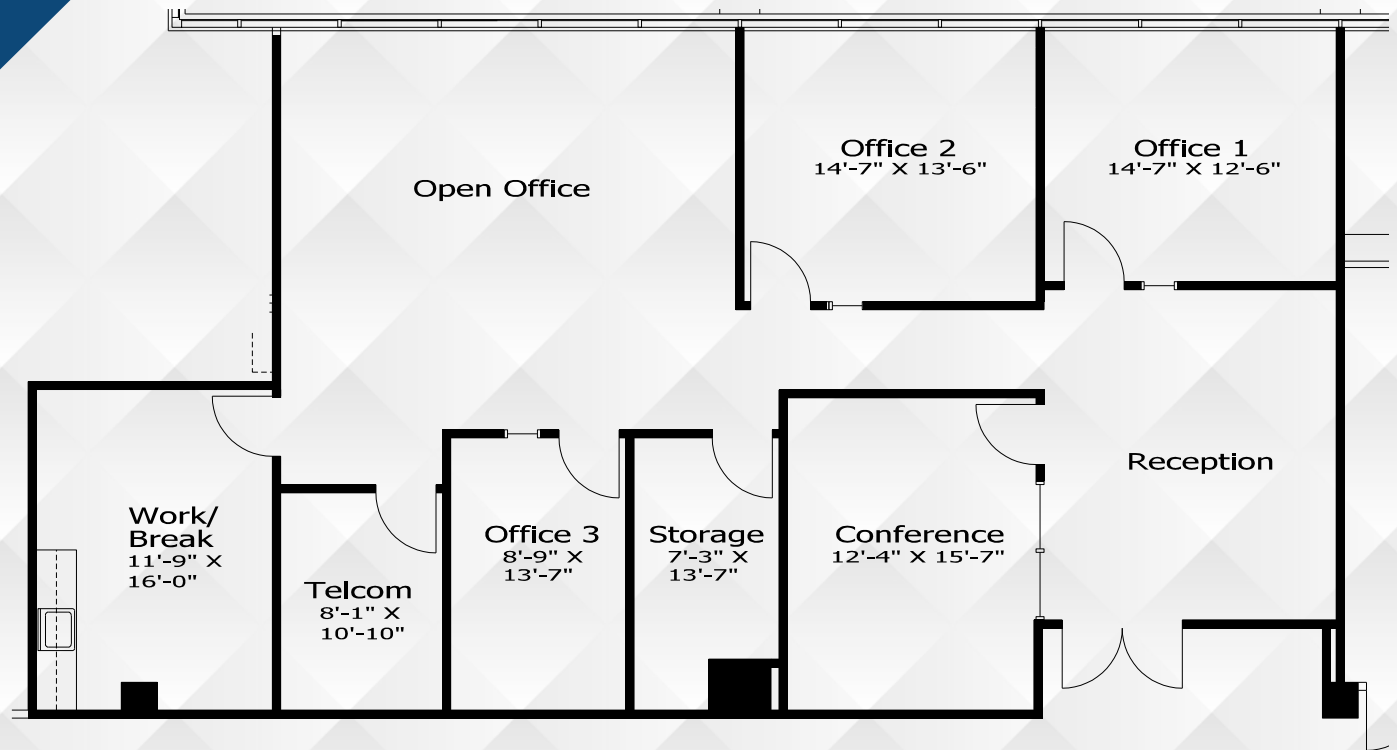
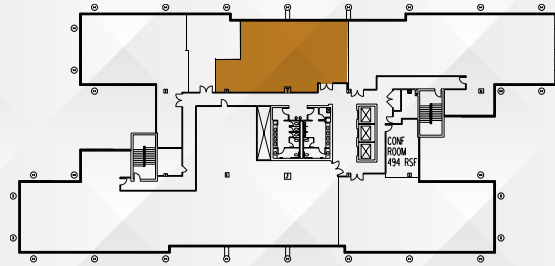
SECOND FLOOR | 3,086 RSF | SUITE 200

POINT WEST COMMERCE CENTRE

1545 RIVER PARK DRIVE
SACRAMENTO, CA



FLOOR PLANS



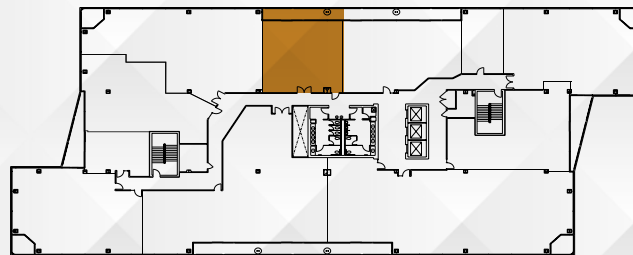
SECOND FLOOR | 2,313 RSF | SUITE 202

POINT WEST COMMERCE CENTRE

1545 RIVER PARK DRIVE
SACRAMENTO, CA



FLOOR PLANS



*Available 02/28/2025

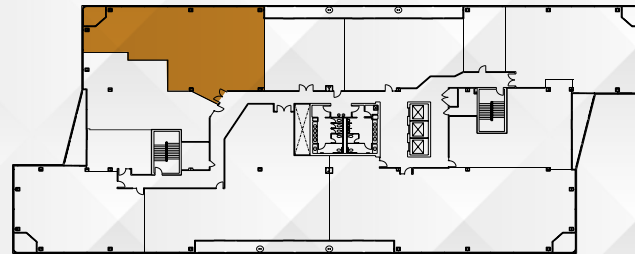
FOURTH FLOOR | 1,641 RSF | SUITE 407*

POINT WEST COMMERCE CENTRE

1545 RIVER PARK DRIVE
SACRAMENTO, CA



FLOOR PLANS



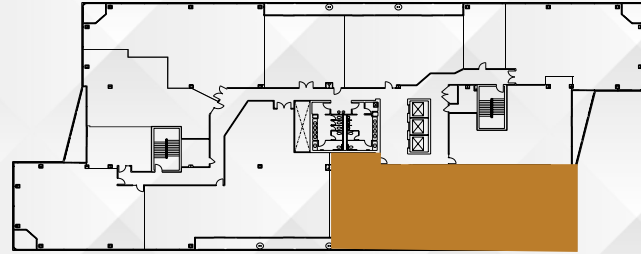
FOURTH FLOOR | 3,145 RSF | SUITE 411

POINT WEST COMMERCE CENTRE

1545 RIVER PARK DRIVE
SACRAMENTO, CA



FLOOR PLANS



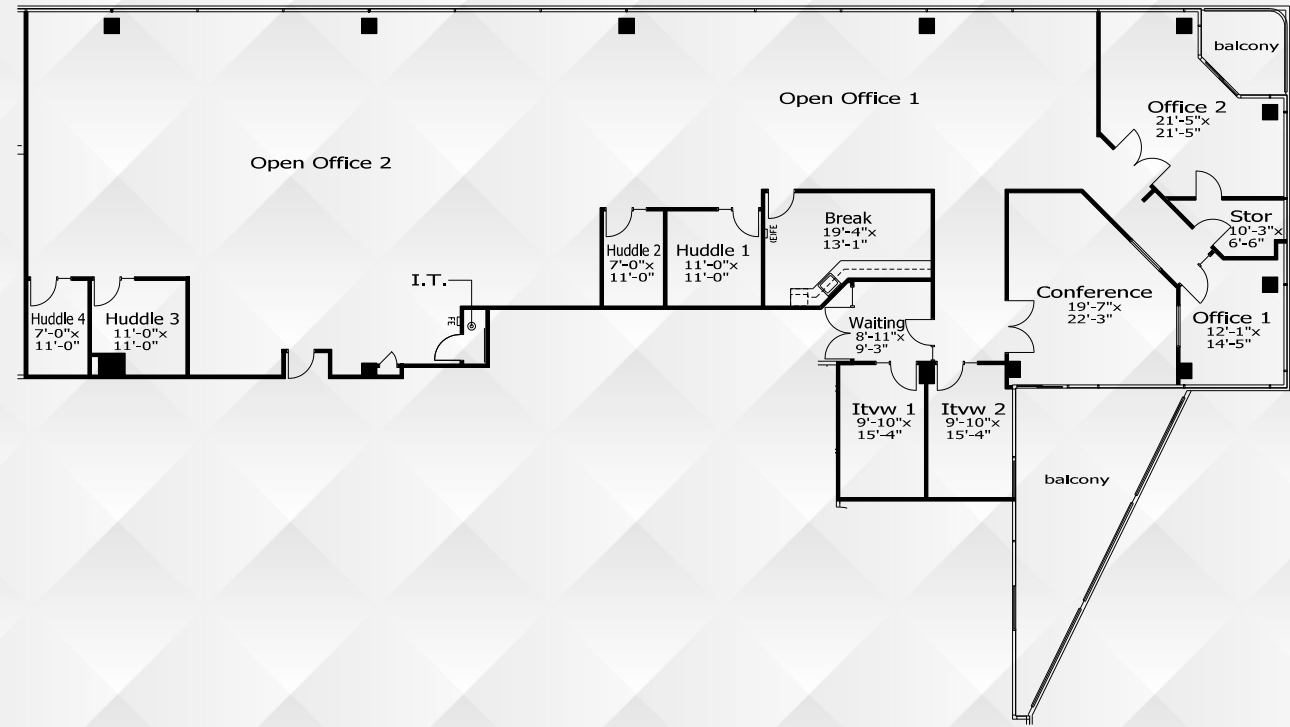
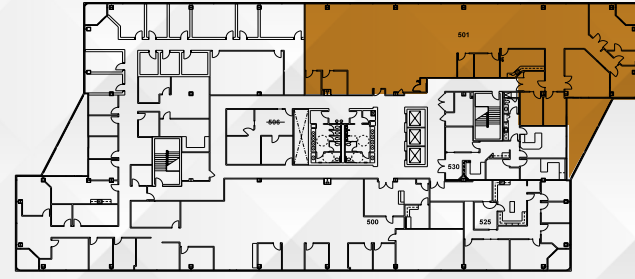
FOURTH FLOOR | 5,331 RSF | SUITE 450

POINT WEST COMMERCE CENTRE

1545 RIVER PARK DRIVE
SACRAMENTO, CA



FLOOR PLANS



FIFTH FLOOR | 7,474 RSF | SUITE 501

POINT WEST COMMERCE CENTRE

1545 RIVER PARK DRIVE, SACRAMENTO, CA



DISCLAIMER: The distributor of this communication is performing acts for which a real estate license is required. The information contained herein has been obtained from sources deemed reliable but has not been verified and no guarantee, warranty or representation, either express or implied, is made with respect to such information. Terms of sale or lease and availability are subject to change or withdrawal without notice. MP23-543 12-24

Exclusively Marketed By: _____

NEWMARK


BASIN STREET
PROPERTIES

Jack Blackmon
916.494.2349
jack.blackmon@nrmk.com
CA RE License #01999561

Lucas Lugo
916.569.2322
lucas.lugo@nrmk.com
CA RE License #01916673

Jodie Robinson
916.569.2318
jodie.robinson@nrmk.com
CA RE License #02214357