



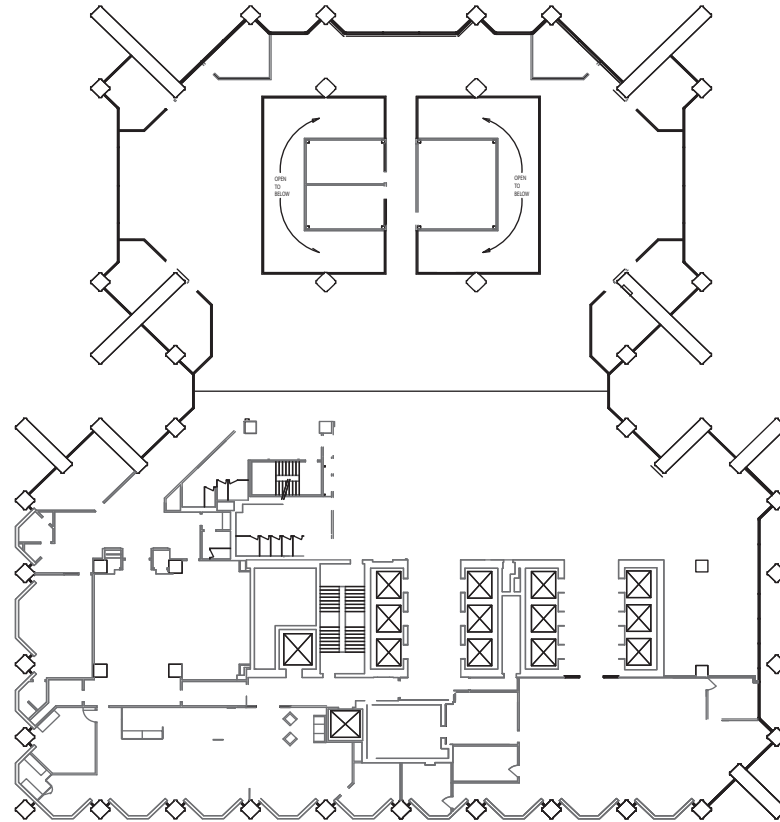
500 W Jefferson Street  
Louisville, Kentucky 40202

[500WJefferson.com](http://500WJefferson.com)

For more information,  
please contact:

**JEFF DREHER, SIOR, MBA**  
[jeff.dreher@am.jll.com](mailto:jeff.dreher@am.jll.com)  
+1 502 394 2519

**RICK ASHTON, CCIM**  
[rick.ashton@am.jll.com](mailto:rick.ashton@am.jll.com)  
+1 502 394 2521



**2<sup>nd</sup> FLOOR**

**27,641 SF**

Jones Lang LaSalle Americas, Inc., a licensed real estate broker in 48 states | Jeff Dreher, SIOR, MBA; Rick Ashton, CCIM | +1 502 426 1300 | 7316 New LaGrange Road, Louisville, Kentucky 40222 | DISCLAIMER Although information has been obtained from sources deemed reliable, neither Owner nor JLL makes any guarantees, warranties or representations, express or implied, as to the completeness or accuracy as to the information contained herein. Any projections, opinions, assumptions or estimates used are for example only. There may be differences between projected and actual results, and those differences may be material. The Property may be withdrawn without notice. Neither Owner nor JLL accepts any liability for any loss or damage suffered by any party resulting from reliance on this information. If the recipient of this information has signed a confidentiality agreement regarding this matter, this information is subject to the terms of that agreement. ©2021. Jones Lang LaSalle IP, Inc. All rights reserved



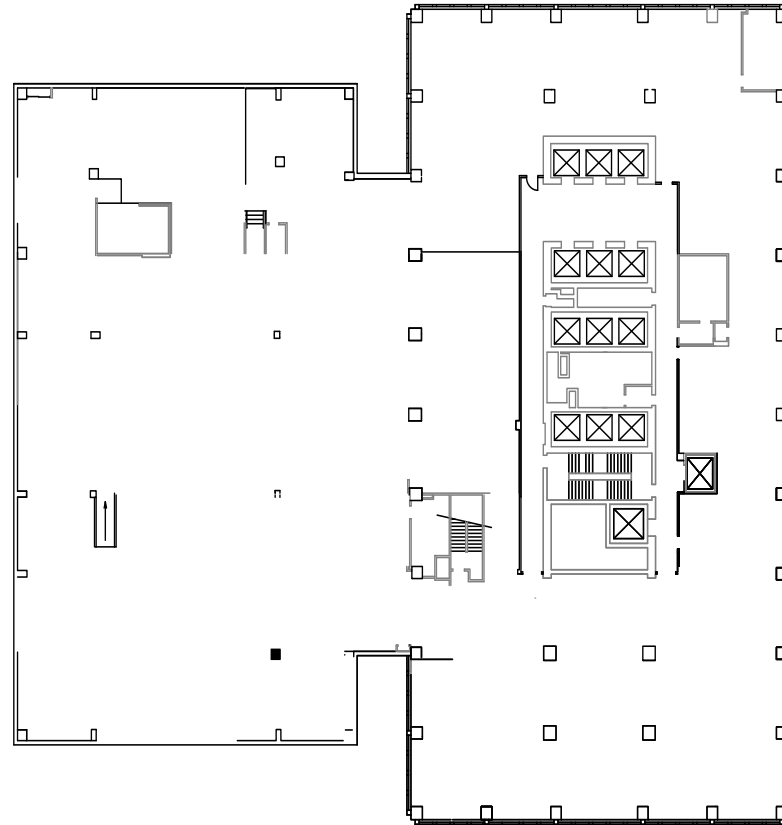
500 W Jefferson Street  
Louisville, Kentucky 40202

[500WJefferson.com](http://500WJefferson.com)

For more information,  
please contact:

**JEFF DREHER, SIOR, MBA**  
[jeff.dreher@am.jll.com](mailto:jeff.dreher@am.jll.com)  
+1 502 394 2519

**RICK ASHTON, CCIM**  
[rick.ashton@am.jll.com](mailto:rick.ashton@am.jll.com)  
+1 502 394 2521



**3<sup>rd</sup> FLOOR**

**34,752 SF**

Jones Lang LaSalle Americas, Inc., a licensed real estate broker in 48 states | Jeff Dreher, SIOR, MBA; Rick Ashton, CCIM | +1 502 426 1300 | 7316 New LaGrange Road, Louisville, Kentucky 40222 | DISCLAIMER Although information has been obtained from sources deemed reliable, neither Owner nor JLL makes any guarantees, warranties or representations, express or implied, as to the completeness or accuracy as to the information contained herein. Any projections, opinions, assumptions or estimates used are for example only. There may be differences between projected and actual results, and those differences may be material. The Property may be withdrawn without notice. Neither Owner nor JLL accepts any liability for any loss or damage suffered by any party resulting from reliance on this information. If the recipient of this information has signed a confidentiality agreement regarding this matter, this information is subject to the terms of that agreement. ©2021. Jones Lang LaSalle IP, Inc. All rights reserved



500 W Jefferson Street  
Louisville, Kentucky 40202

[500WJefferson.com](http://500WJefferson.com)

For more information,  
please contact:

**JEFF DREHER, SIOR, MBA**  
[jeff.dreher@am.jll.com](mailto:jeff.dreher@am.jll.com)  
+1 502 394 2519

**RICK ASHTON, CCIM**  
[rick.ashton@am.jll.com](mailto:rick.ashton@am.jll.com)  
+1 502 394 2521



**4<sup>th</sup> FLOOR**

**15,720 SF**

Jones Lang LaSalle Americas, Inc., a licensed real estate broker in 48 states | Jeff Dreher, SIOR, MBA; Rick Ashton, CCIM | +1 502 426 1300 | 7316 New LaGrange Road, Louisville, Kentucky 40222 | **DISCLAIMER** Although information has been obtained from sources deemed reliable, neither Owner nor JLL makes any guarantees, warranties or representations, express or implied, as to the completeness or accuracy as to the information contained herein. Any projections, opinions, assumptions or estimates used are for example only. There may be differences between projected and actual results, and those differences may be material. The Property may be withdrawn without notice. Neither Owner nor JLL accepts any liability for any loss or damage suffered by any party resulting from reliance on this information. If the recipient of this information has signed a confidentiality agreement regarding this matter, this information is subject to the terms of that agreement. ©2021. Jones Lang LaSalle IP, Inc. All rights reserved





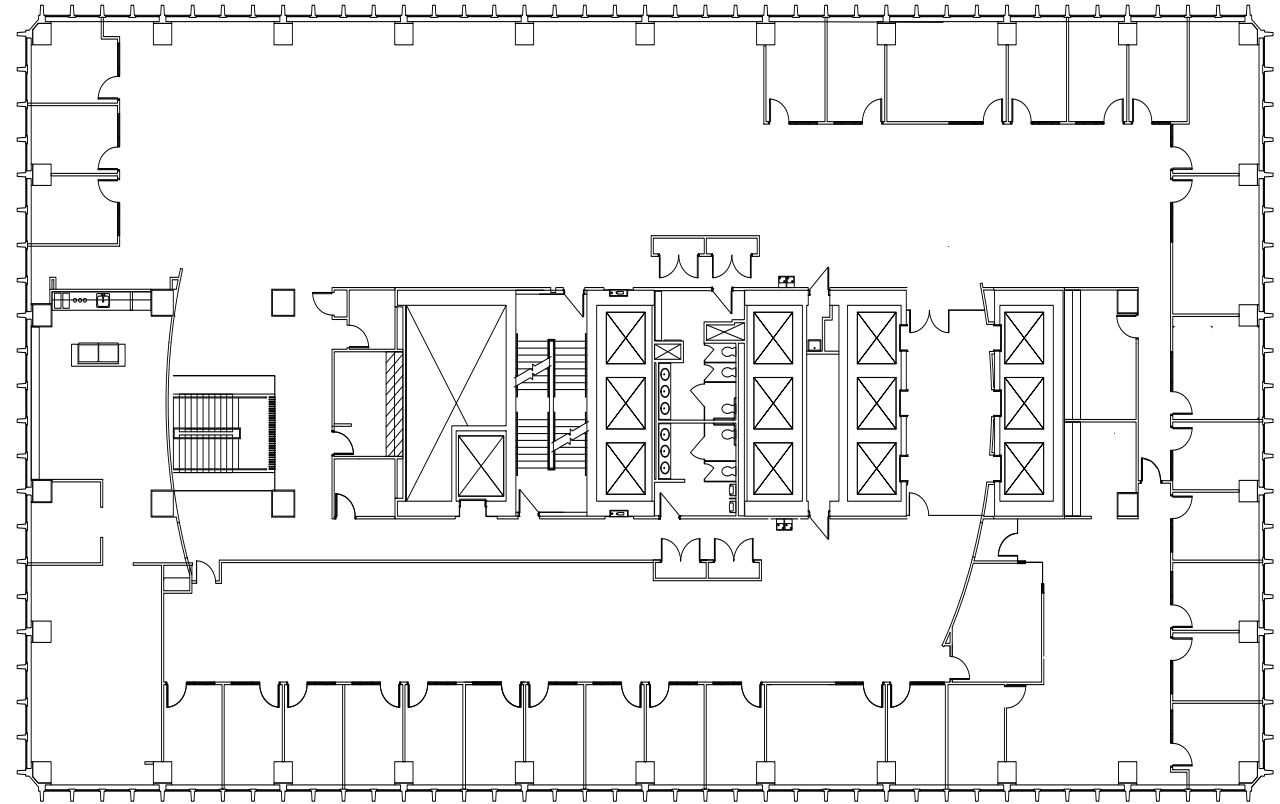
500 W Jefferson Street  
Louisville, Kentucky 40202

[500WJefferson.com](http://500WJefferson.com)

For more information,  
please contact:

**JEFF DREHER, SIOR, MBA**  
[jeff.dreher@am.jll.com](mailto:jeff.dreher@am.jll.com)  
+1 502 394 2519

**RICK ASHTON, CCIM**  
[rick.ashton@am.jll.com](mailto:rick.ashton@am.jll.com)  
+1 502 394 2521



**6<sup>th</sup> FLOOR**

**15,720 SF**

Jones Lang LaSalle Americas, Inc., a licensed real estate broker in 48 states | Jeff Dreher, SIOR, MBA; Rick Ashton, CCIM | +1 502 426 1300 | 7316 New LaGrange Road, Louisville, Kentucky 40222 | DISCLAIMER Although information has been obtained from sources deemed reliable, neither Owner nor JLL makes any guarantees, warranties or representations, express or implied, as to the completeness or accuracy as to the information contained herein. Any projections, opinions, assumptions or estimates used are for example only. There may be differences between projected and actual results, and those differences may be material. The Property may be withdrawn without notice. Neither Owner nor JLL accepts any liability for any loss or damage suffered by any party resulting from reliance on this information. If the recipient of this information has signed a confidentiality agreement regarding this matter, this information is subject to the terms of that agreement. ©2021. Jones Lang LaSalle IP, Inc. All rights reserved



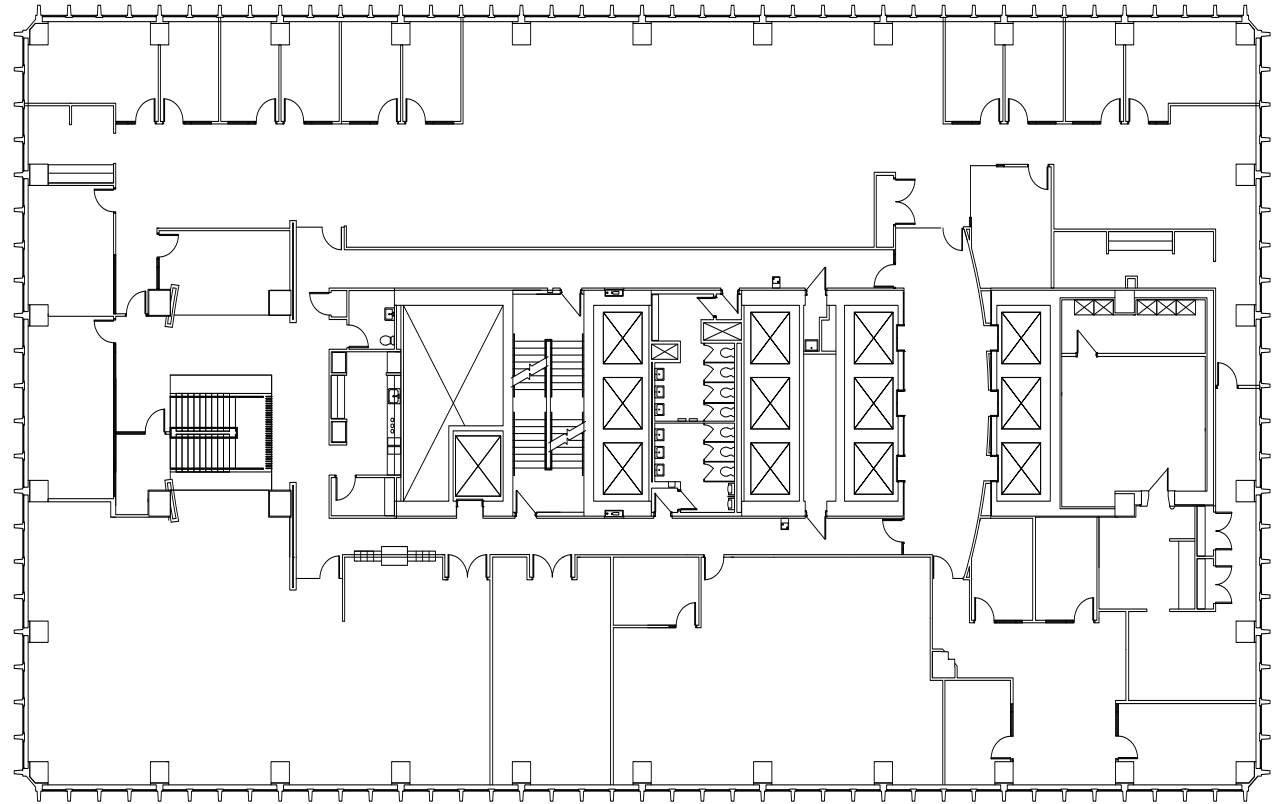
500 W Jefferson Street  
Louisville, Kentucky 40202

[500WJefferson.com](http://500WJefferson.com)

For more information,  
please contact:

**JEFF DREHER, SIOR, MBA**  
[jeff.dreher@am.jll.com](mailto:jeff.dreher@am.jll.com)  
+1 502 394 2519

**RICK ASHTON, CCIM**  
[rick.ashton@am.jll.com](mailto:rick.ashton@am.jll.com)  
+1 502 394 2521



**7<sup>th</sup> FLOOR**

**18,525 SF**

Jones Lang LaSalle Americas, Inc., a licensed real estate broker in 48 states | Jeff Dreher, SIOR, MBA; Rick Ashton, CCIM | +1 502 426 1300 | 7316 New LaGrange Road, Louisville, Kentucky 40222 | DISCLAIMER Although information has been obtained from sources deemed reliable, neither Owner nor JLL makes any guarantees, warranties or representations, express or implied, as to the completeness or accuracy as to the information contained herein. Any projections, opinions, assumptions or estimates used are for example only. There may be differences between projected and actual results, and those differences may be material. The Property may be withdrawn without notice. Neither Owner nor JLL accepts any liability for any loss or damage suffered by any party resulting from reliance on this information. If the recipient of this information has signed a confidentiality agreement regarding this matter, this information is subject to the terms of that agreement. ©2021. Jones Lang LaSalle IP, Inc. All rights reserved



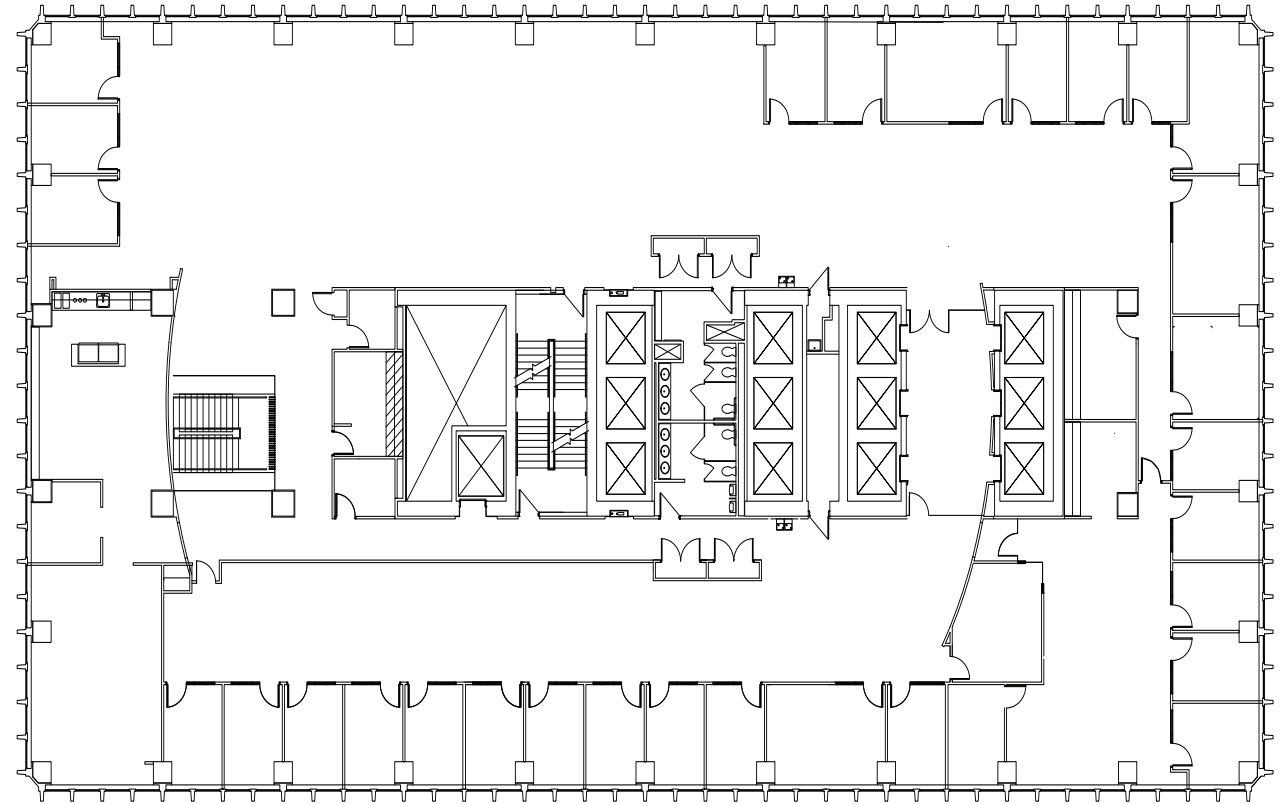
500 W Jefferson Street  
Louisville, Kentucky 40202

[500WJefferson.com](http://500WJefferson.com)

For more information,  
please contact:

**JEFF DREHER, SIOR, MBA**  
[jeff.dreher@am.jll.com](mailto:jeff.dreher@am.jll.com)  
+1 502 394 2519

**RICK ASHTON, CCIM**  
[rick.ashton@am.jll.com](mailto:rick.ashton@am.jll.com)  
+1 502 394 2521



**8<sup>th</sup> FLOOR**

**18,535 SF**

Jones Lang LaSalle Americas, Inc., a licensed real estate broker in 48 states | Jeff Dreher, SIOR, MBA; Rick Ashton, CCIM | +1 502 426 1300 | 7316 New LaGrange Road, Louisville, Kentucky 40222 | DISCLAIMER Although information has been obtained from sources deemed reliable, neither Owner nor JLL makes any guarantees, warranties or representations, express or implied, as to the completeness or accuracy as to the information contained herein. Any projections, opinions, assumptions or estimates used are for example only. There may be differences between projected and actual results, and those differences may be material. The Property may be withdrawn without notice. Neither Owner nor JLL accepts any liability for any loss or damage suffered by any party resulting from reliance on this information. If the recipient of this information has signed a confidentiality agreement regarding this matter, this information is subject to the terms of that agreement. ©2021. Jones Lang LaSalle IP, Inc. All rights reserved



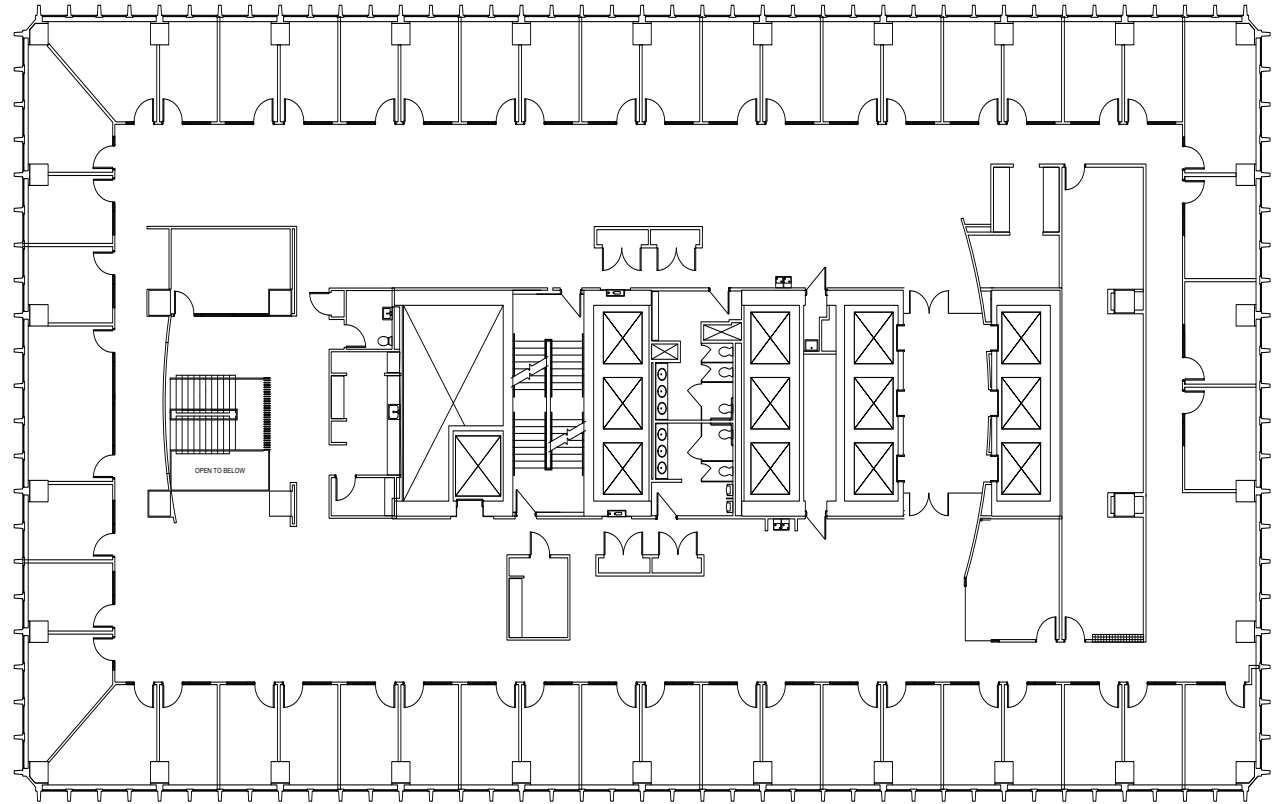
500 W Jefferson Street  
Louisville, Kentucky 40202

500WJefferson.com

For more information,  
please contact:

**JEFF DREHER, SIOR, MBA**  
jeff.dreher@am.jll.com  
+1 502 394 2519

**RICK ASHTON, CCIM**  
rick.ashton@am.jll.com  
+1 502 394 2521



**9<sup>th</sup> FLOOR**

**18,532 SF**

Jones Lang LaSalle Americas, Inc., a licensed real estate broker in 48 states | Jeff Dreher, SIOR, MBA; Rick Ashton, CCIM | +1 502 426 1300 | 7316 New LaGrange Road, Louisville, Kentucky 40222 | DISCLAIMER Although information has been obtained from sources deemed reliable, neither Owner nor JLL makes any guarantees, warranties or representations, express or implied, as to the completeness or accuracy as to the information contained herein. Any projections, opinions, assumptions or estimates used are for example only. There may be differences between projected and actual results, and those differences may be material. The Property may be withdrawn without notice. Neither Owner nor JLL accepts any liability for any loss or damage suffered by any party resulting from reliance on this information. If the recipient of this information has signed a confidentiality agreement regarding this matter, this information is subject to the terms of that agreement. ©2021. Jones Lang LaSalle IP, Inc. All rights reserved





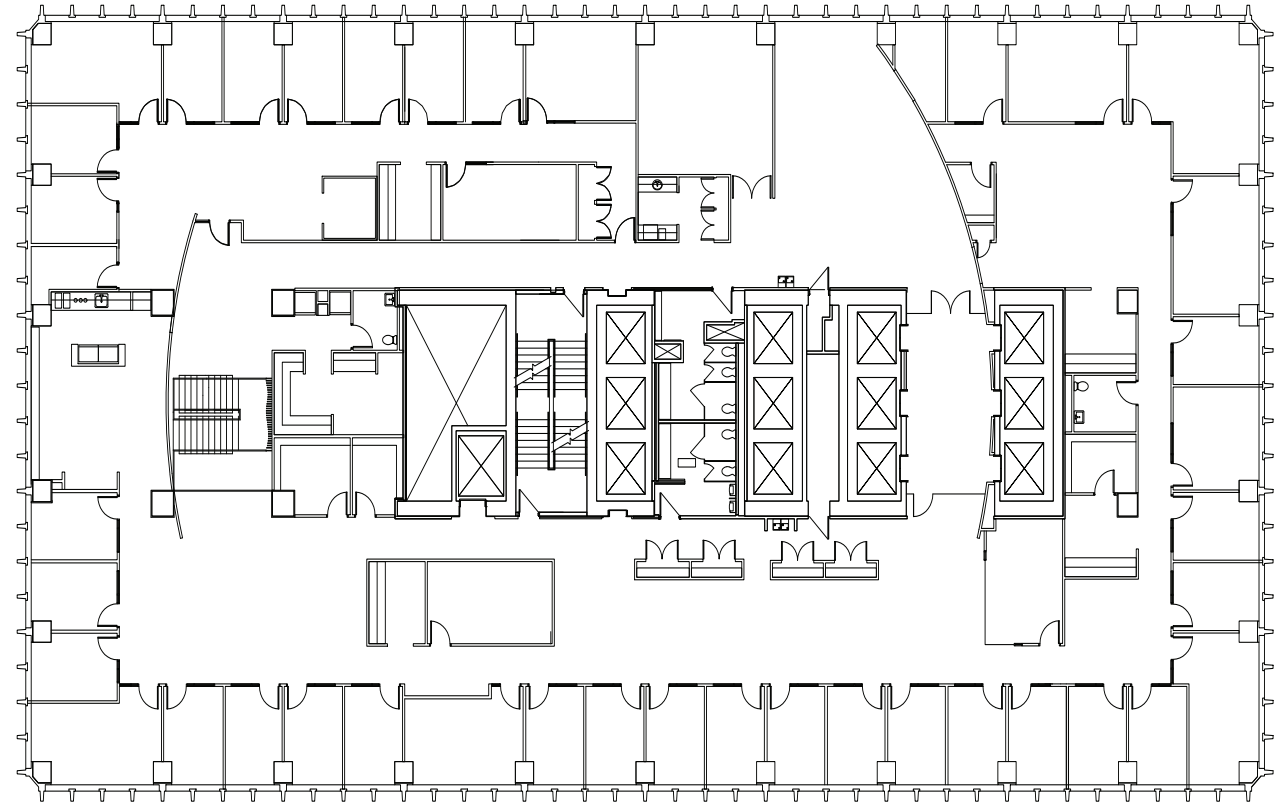
500 W Jefferson Street  
Louisville, Kentucky 40202

[500WJefferson.com](http://500WJefferson.com)

For more information,  
please contact:

**JEFF DREHER, SIOR, MBA**  
[jeff.dreher@am.jll.com](mailto:jeff.dreher@am.jll.com)  
+1 502 394 2519

**RICK ASHTON, CCIM**  
[rick.ashton@am.jll.com](mailto:rick.ashton@am.jll.com)  
+1 502 394 2521



**10<sup>th</sup> FLOOR**

**18,530 SF**

Jones Lang LaSalle Americas, Inc., a licensed real estate broker in 48 states | Jeff Dreher, SIOR, MBA; Rick Ashton, CCIM | +1 502 426 1300 | 7316 New LaGrange Road, Louisville, Kentucky 40222 | DISCLAIMER Although information has been obtained from sources deemed reliable, neither Owner nor JLL makes any guarantees, warranties or representations, express or implied, as to the completeness or accuracy as to the information contained herein. Any projections, opinions, assumptions or estimates used are for example only. There may be differences between projected and actual results, and those differences may be material. The Property may be withdrawn without notice. Neither Owner nor JLL accepts any liability for any loss or damage suffered by any party resulting from reliance on this information. If the recipient of this information has signed a confidentiality agreement regarding this matter, this information is subject to the terms of that agreement. ©2021. Jones Lang LaSalle IP, Inc. All rights reserved



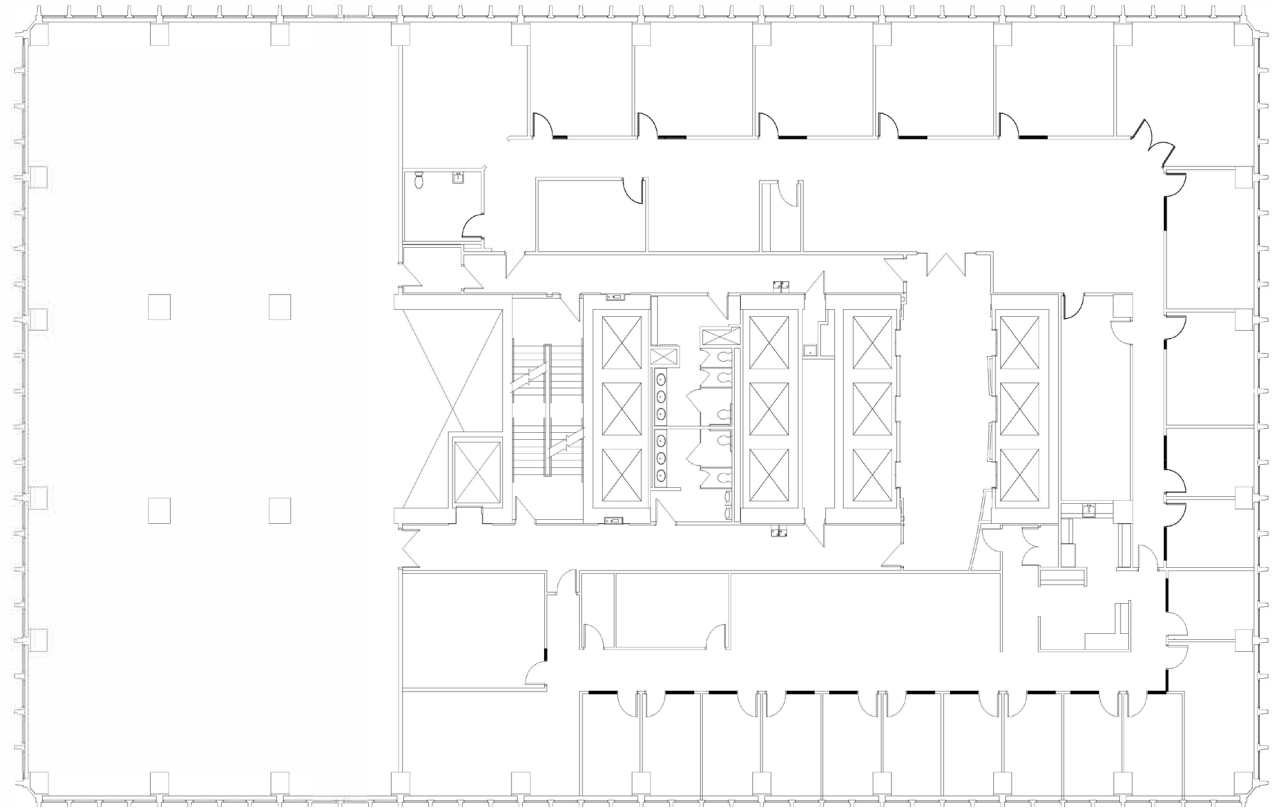
500 W Jefferson Street  
Louisville, Kentucky 40202

[500WJefferson.com](http://500WJefferson.com)

For more information,  
please contact:

**JEFF DREHER, SIOR, MBA**  
[jeff.dreher@am.jll.com](mailto:jeff.dreher@am.jll.com)  
+1 502 394 2519

**RICK ASHTON, CCIM**  
[rick.ashton@am.jll.com](mailto:rick.ashton@am.jll.com)  
+1 502 394 2521



**11<sup>th</sup> FLOOR**

**12,436 SF**

Jones Lang LaSalle Americas, Inc., a licensed real estate broker in 48 states | Jeff Dreher, SIOR, MBA; Rick Ashton, CCIM | +1 502 426 1300 | 7316 New LaGrange Road, Louisville, Kentucky 40222 | DISCLAIMER Although information has been obtained from sources deemed reliable, neither Owner nor JLL makes any guarantees, warranties or representations, express or implied, as to the completeness or accuracy as to the information contained herein. Any projections, opinions, assumptions or estimates used are for example only. There may be differences between projected and actual results, and those differences may be material. The Property may be withdrawn without notice. Neither Owner nor JLL accepts any liability for any loss or damage suffered by any party resulting from reliance on this information. If the recipient of this information has signed a confidentiality agreement regarding this matter, this information is subject to the terms of that agreement. ©2021. Jones Lang LaSalle IP, Inc. All rights reserved



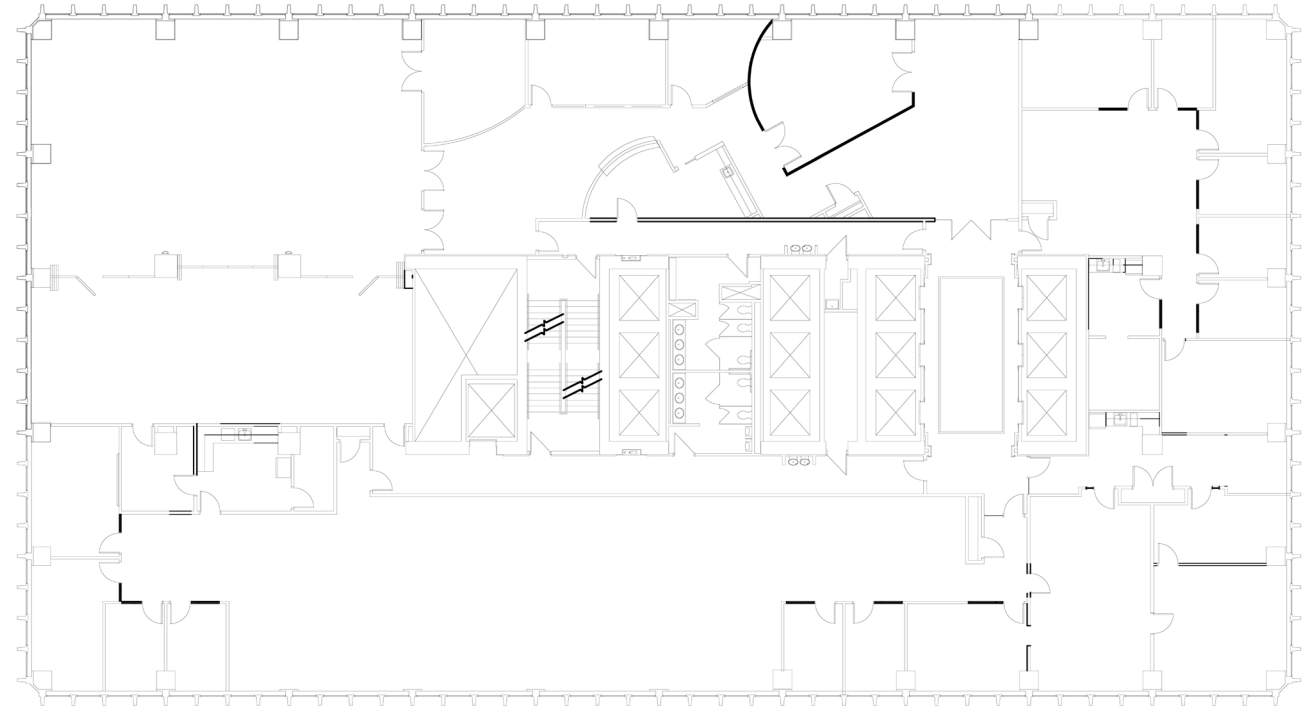
500 W Jefferson Street  
Louisville, Kentucky 40202

[500WJefferson.com](http://500WJefferson.com)

For more information,  
please contact:

**JEFF DREHER, SIOR, MBA**  
[jeff.dreher@am.jll.com](mailto:jeff.dreher@am.jll.com)  
+1 502 394 2519

**RICK ASHTON, CCIM**  
[rick.ashton@am.jll.com](mailto:rick.ashton@am.jll.com)  
+1 502 394 2521



**12<sup>th</sup> FLOOR**

**18,527 SF**

Jones Lang LaSalle Americas, Inc., a licensed real estate broker in 48 states | Jeff Dreher, SIOR, MBA; Rick Ashton, CCIM | +1 502 426 1300 | 7316 New LaGrange Road, Louisville, Kentucky 40222 | **DISCLAIMER** Although information has been obtained from sources deemed reliable, neither Owner nor JLL makes any guarantees, warranties or representations, express or implied, as to the completeness or accuracy as to the information contained herein. Any projections, opinions, assumptions or estimates used are for example only. There may be differences between projected and actual results, and those differences may be material. The Property may be withdrawn without notice. Neither Owner nor JLL accepts any liability for any loss or damage suffered by any party resulting from reliance on this information. If the recipient of this information has signed a confidentiality agreement regarding this matter, this information is subject to the terms of that agreement. ©2021. Jones Lang LaSalle IP, Inc. All rights reserved



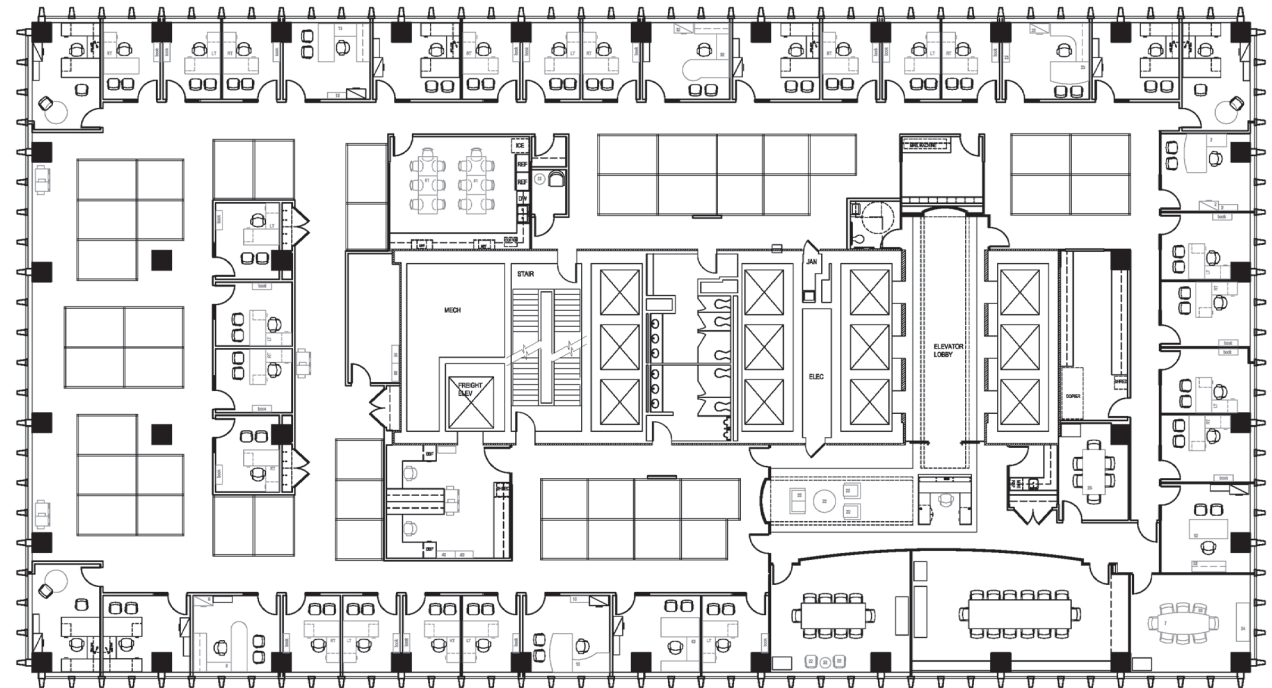
500 W Jefferson Street  
Louisville, Kentucky 40202

[500WJefferson.com](http://500WJefferson.com)

For more information,  
please contact:

**JEFF DREHER, SIOR, MBA**  
[jeff.dreher@am.jll.com](mailto:jeff.dreher@am.jll.com)  
+1 502 394 2519

**RICK ASHTON, CCIM**  
[rick.ashton@am.jll.com](mailto:rick.ashton@am.jll.com)  
+1 502 394 2521



**14<sup>th</sup> FLOOR**

**18,683 SF**

Jones Lang LaSalle Americas, Inc., a licensed real estate broker in 48 states | Jeff Dreher, SIOR, MBA; Rick Ashton, CCIM | +1 502 426 1300 | 7316 New LaGrange Road, Louisville, Kentucky 40222 | **DISCLAIMER** Although information has been obtained from sources deemed reliable, neither Owner nor JLL makes any guarantees, warranties or representations, express or implied, as to the completeness or accuracy as to the information contained herein. Any projections, opinions, assumptions or estimates used are for example only. There may be differences between projected and actual results, and those differences may be material. The Property may be withdrawn without notice. Neither Owner nor JLL accepts any liability for any loss or damage suffered by any party resulting from reliance on this information. If the recipient of this information has signed a confidentiality agreement regarding this matter, this information is subject to the terms of that agreement. ©2021. Jones Lang LaSalle IP, Inc. All rights reserved



500 W Jefferson Street  
Louisville, Kentucky 40202

500WJefferson.com

For more information,  
please contact:

**JEFF DREHER, SIOR, MBA**  
jeff.dreher@am.jll.com  
+1 502 394 2519

**RICK ASHTON, CCIM**  
rick.ashton@am.jll.com  
+1 502 394 2521

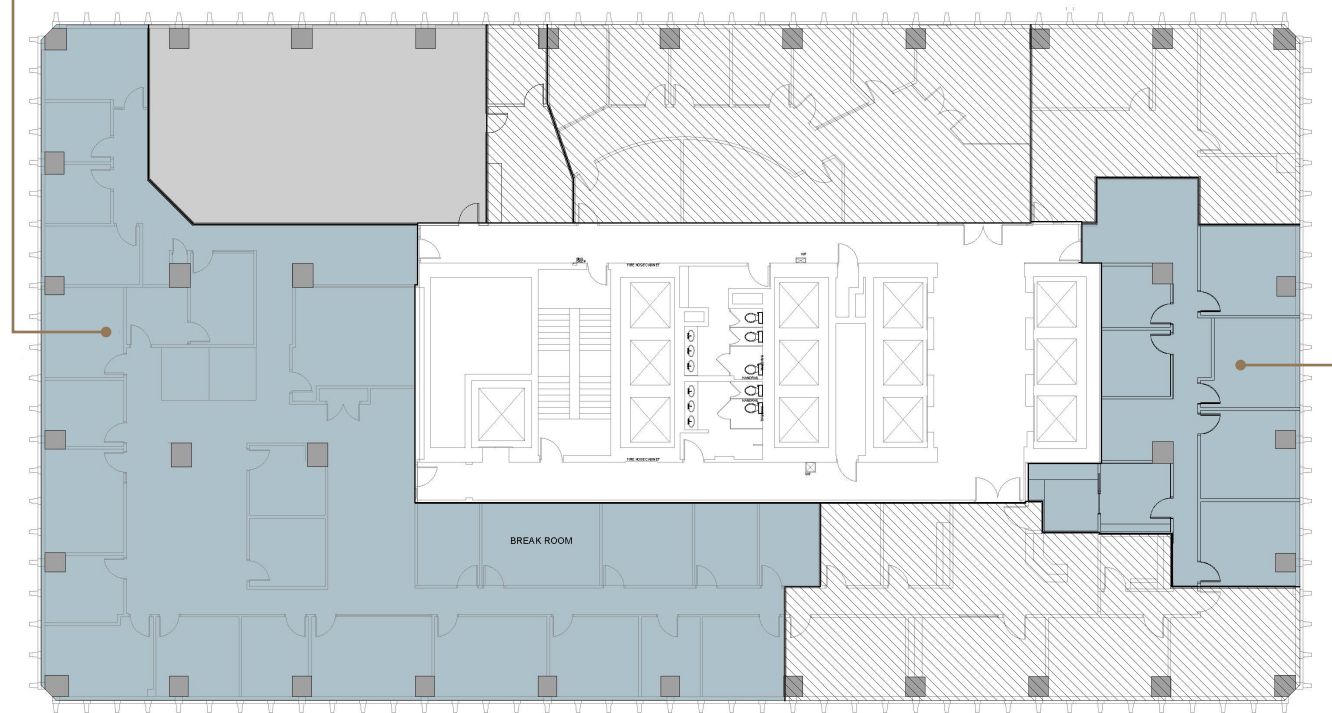


AVAILABLE SPACE

7,463 RSF

AVAILABLE SPACE

2,110 RSF



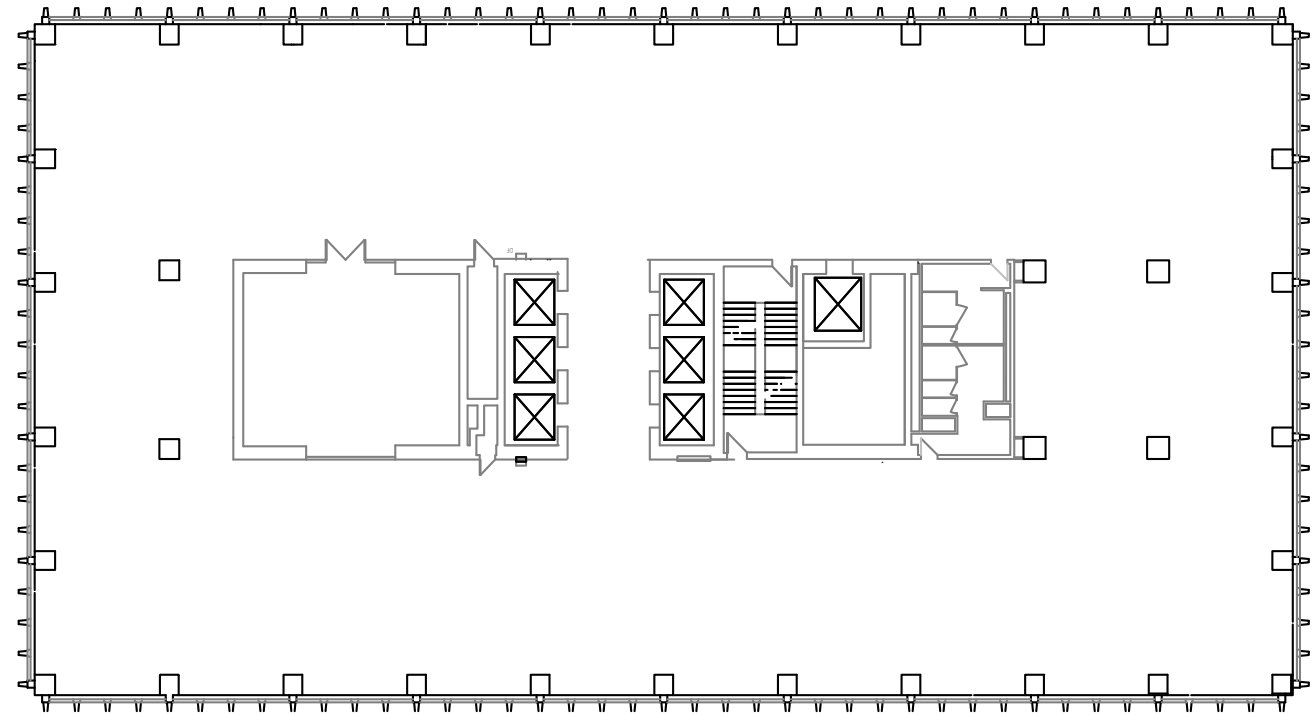
## 15<sup>th</sup> FLOOR

1,790 - 9,635 SF



500 W Jefferson Street  
Louisville, Kentucky 40202

[500WJefferson.com](http://500WJefferson.com)



**17<sup>th</sup> FLOOR**

**18,237 SF**

For more information,  
please contact:

**JEFF DREHER, SIOR, MBA**  
[jeff.dreher@am.jll.com](mailto:jeff.dreher@am.jll.com)  
+1 502 394 2519

**RICK ASHTON, CCIM**  
[rick.ashton@am.jll.com](mailto:rick.ashton@am.jll.com)  
+1 502 394 2521



Jones Lang LaSalle Americas, Inc., a licensed real estate broker in 48 states | Jeff Dreher, SIOR, MBA; Rick Ashton, CCIM | +1 502 426 1300 | 7316 New LaGrange Road, Louisville, Kentucky 40222 | **DISCLAIMER** Although information has been obtained from sources deemed reliable, neither Owner nor JLL makes any guarantees, warranties or representations, express or implied, as to the completeness or accuracy as to the information contained herein. Any projections, opinions, assumptions or estimates used are for example only. There may be differences between projected and actual results, and those differences may be material. The Property may be withdrawn without notice. Neither Owner nor JLL accepts any liability for any loss or damage suffered by any party resulting from reliance on this information. If the recipient of this information has signed a confidentiality agreement regarding this matter, this information is subject to the terms of that agreement. ©2021. Jones Lang LaSalle IP, Inc. All rights reserved



500 W Jefferson Street  
Louisville, Kentucky 40202

[500WJefferson.com](http://500WJefferson.com)

For more information,  
please contact:

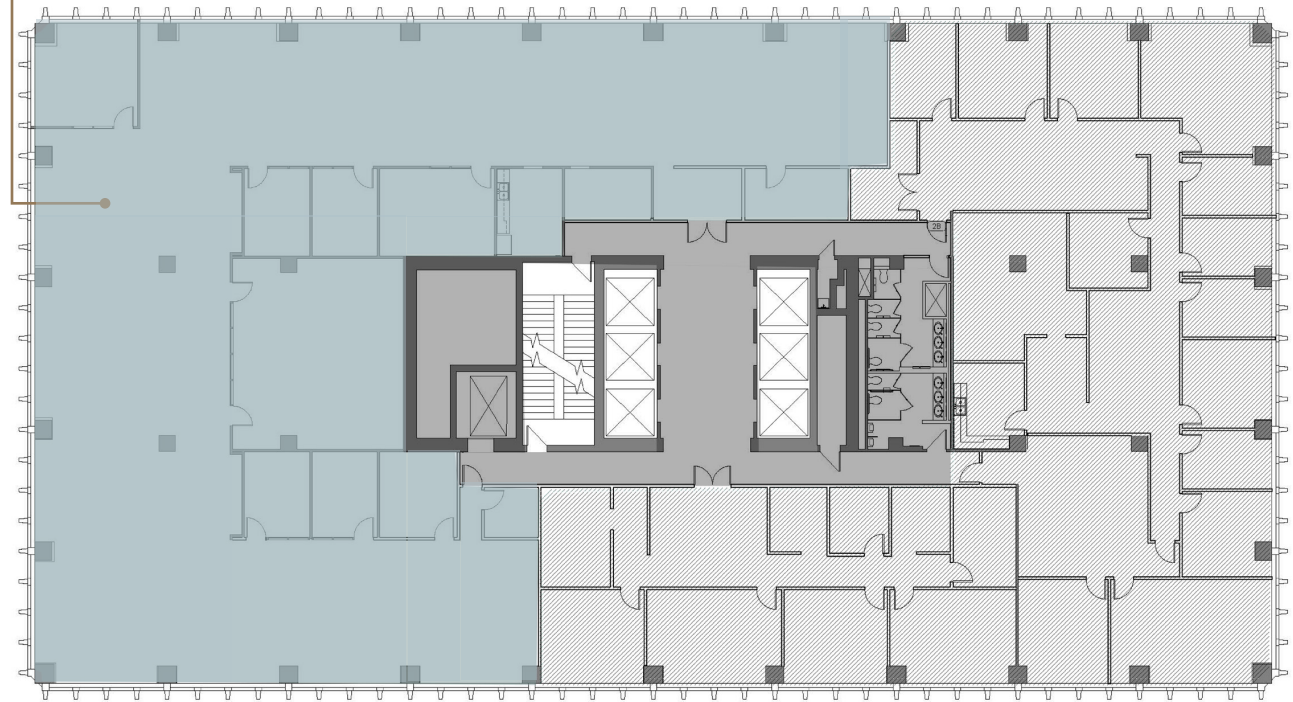
**JEFF DREHER, SIOR, MBA**  
[jeff.dreher@am.jll.com](mailto:jeff.dreher@am.jll.com)  
+1 502 394 2519

**RICK ASHTON, CCIM**  
[rick.ashton@am.jll.com](mailto:rick.ashton@am.jll.com)  
+1 502 394 2521



**AVAILABLE SPACE**

**9,300 RSF**



**22<sup>nd</sup> FLOOR**

**9,300 SF**

Jones Lang LaSalle Americas, Inc., a licensed real estate broker in 48 states | Jeff Dreher, SIOR, MBA; Rick Ashton, CCIM | +1 502 426 1300 | 7316 New LaGrange Road, Louisville, Kentucky 40222 | **DISCLAIMER** Although information has been obtained from sources deemed reliable, neither Owner nor JLL makes any guarantees, warranties or representations, express or implied, as to the completeness or accuracy as to the information contained herein. Any projections, opinions, assumptions or estimates used are for example only. There may be differences between projected and actual results, and those differences may be material. The Property may be withdrawn without notice. Neither Owner nor JLL accepts any liability for any loss or damage suffered by any party resulting from reliance on this information. If the recipient of this information has signed a confidentiality agreement regarding this matter, this information is subject to the terms of that agreement. ©2021. Jones Lang LaSalle IP, Inc. All rights reserved



500 W Jefferson Street  
Louisville, Kentucky 40202

500WJefferson.com

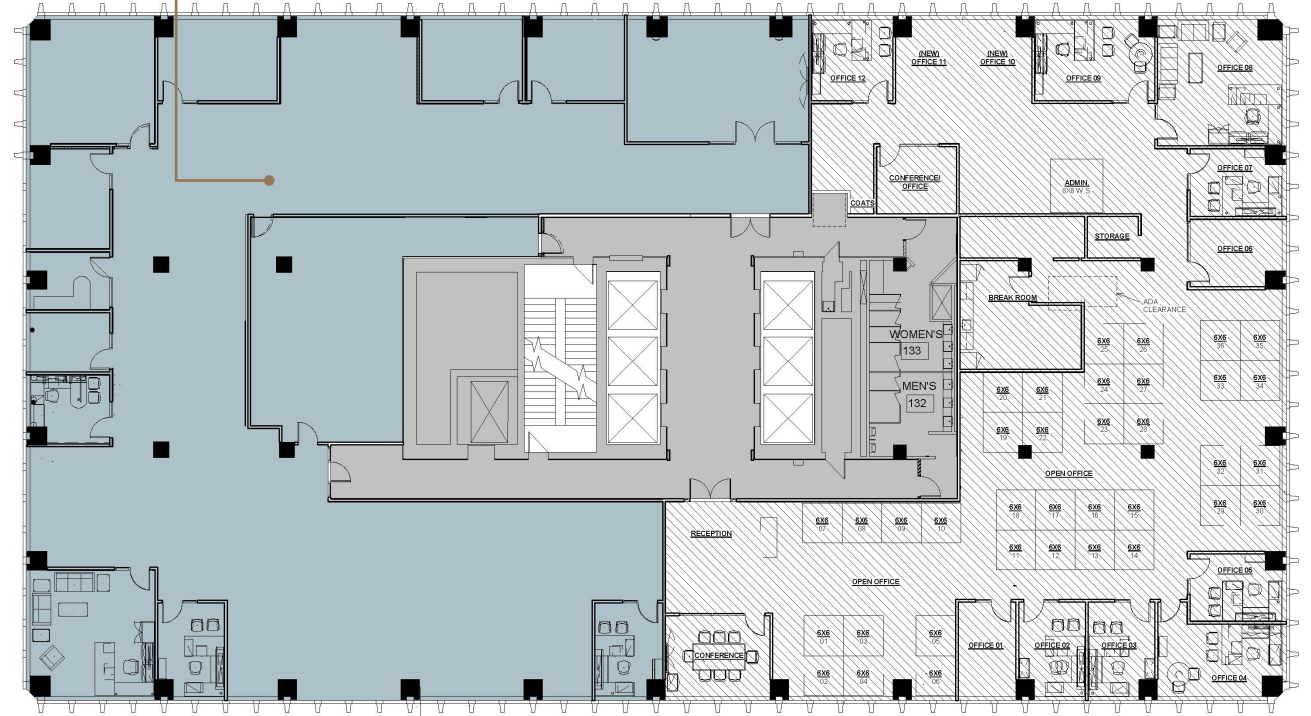
For more information,  
please contact:

**JEFF DREHER, SIOR, MBA**  
jeff.dreher@am.jll.com  
+1 502 394 2519

**RICK ASHTON, CCIM**  
rick.ashton@am.jll.com  
+1 502 394 2521



AVAILABLE SPACE  
10,420 RSF



**23<sup>rd</sup> FLOOR**

**10,420 SF**





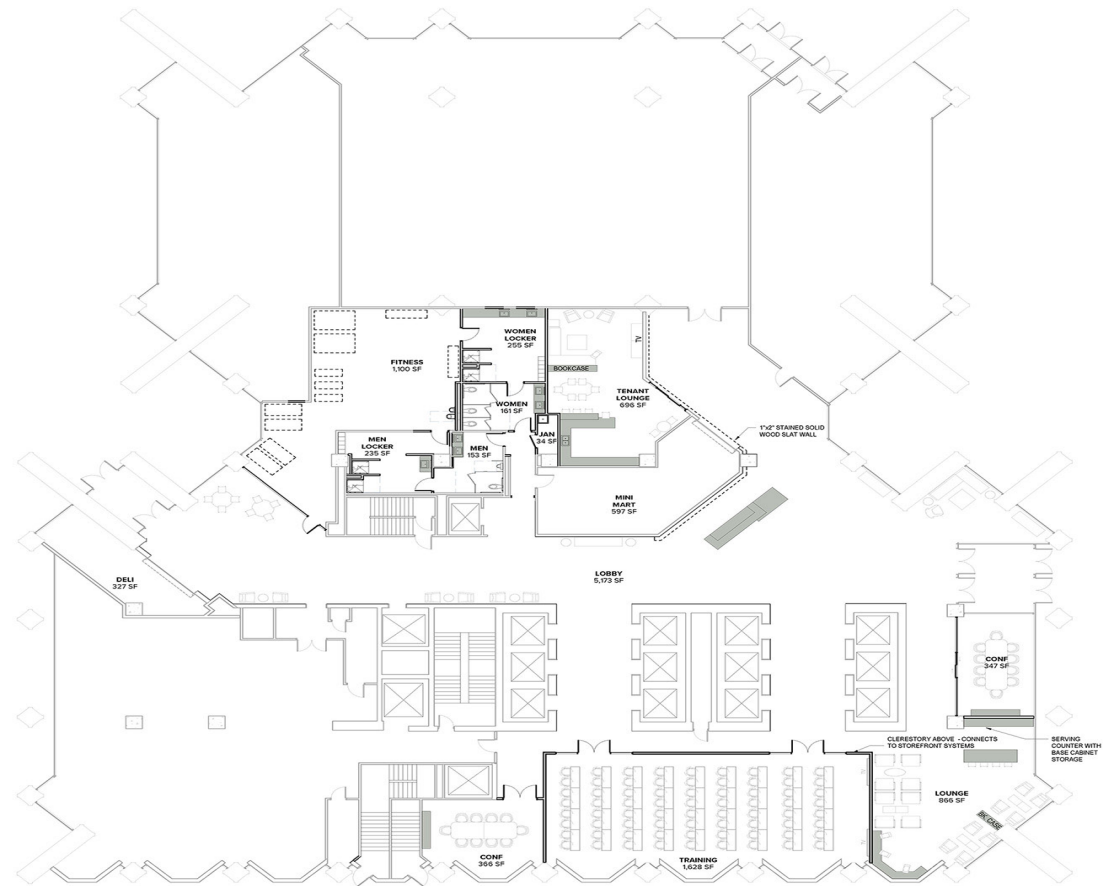
500 W Jefferson Street  
Louisville, Kentucky 40202

500WJefferson.com

For more information,  
please contact:

**JEFF DREHER, SIOR, MBA**  
jeff.dreher@am.jll.com  
+1 502 394 2519

**RICK ASHTON, CCIM**  
rick.ashton@am.jll.com  
+1 502 394 2521



## PLAZA LEVEL

5,803 SF

Jones Lang LaSalle Americas, Inc., a licensed real estate broker in 48 states | Jeff Dreher, SIOR, MBA; Rick Ashton, CCIM | +1 502 426 1300 | 7316 New LaGrange Road, Louisville, Kentucky 40222 | DISCLAIMER Although information has been obtained from sources deemed reliable, neither Owner nor JLL makes any guarantees, warranties or representations, express or implied, as to the completeness or accuracy as to the information contained herein. Any projections, opinions, assumptions or estimates used are for example only. There may be differences between projected and actual results, and those differences may be material. The Property may be withdrawn without notice. Neither Owner nor JLL accepts any liability for any loss or damage suffered by any party resulting from reliance on this information. If the recipient of this information has signed a confidentiality agreement regarding this matter, this information is subject to the terms of that agreement. ©2021. Jones Lang LaSalle IP, Inc. All rights reserved



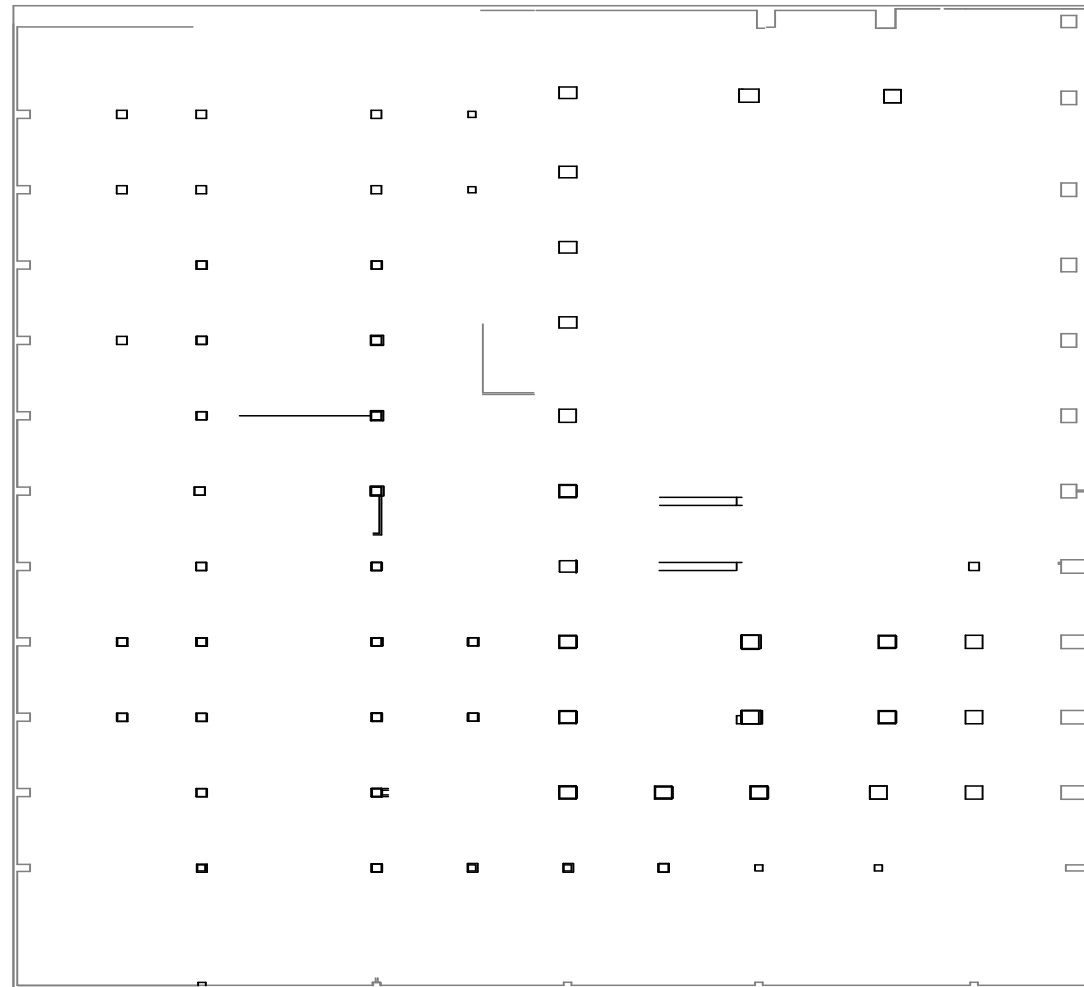
500 W Jefferson Street  
Louisville, Kentucky 40202

[500WJefferson.com](http://500WJefferson.com)

For more information,  
please contact:

**JEFF DREHER, SIOR, MBA**  
[jeff.dreher@am.jll.com](mailto:jeff.dreher@am.jll.com)  
+1 502 394 2519

**RICK ASHTON, CCIM**  
[rick.ashton@am.jll.com](mailto:rick.ashton@am.jll.com)  
+1 502 394 2521



## LOWER LEVEL

31,520 SF