

220 FAYETTEVILLE ST.

RALEIGH, NC 27601

CREATIVE DOWNTOWN OFFICE SPACE
FOR LEASE



ELM
PARTNERS



/ LEASE DETAILS

- Rent: \$27/SF
- 3,063 square feet on the fourth floor
- Long term lease desired

/ HIGHLIGHTS

- Historic Briggs Hardware building - Raleigh's oldest skyscraper
- Signature office space on North Carolina's Main Street
- Perfect location for design and engineering firm across from the City Building
- Perfect location for lobbying firms - 1 block from the Governor's Mansion and 3 blocks from the General Assembly



220 FAYETTEVILLE ST.



ELM
PARTNERS

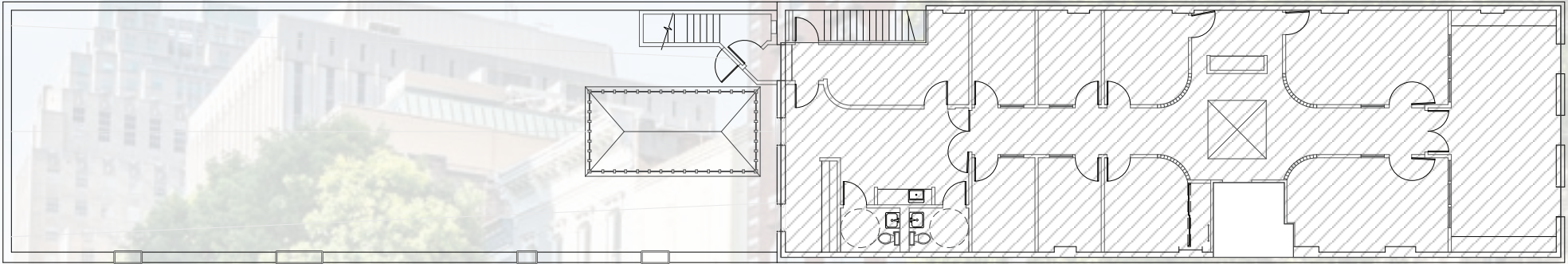


220 FAYETTEVILLE ST.



ELM
PARTNERS

FLOOR PLANS - NOT TO SCALE



Rentable Square Footage 3,063sf

FOURTH FLOOR

220 FAYETTEVILLE ST.

ELM
PARTNERS

440 / CAPITAL BLVD

5 POINTS

VILLAGE
DISTRICT

NC STATE
UNIVERSITY

SEABOARD
STATION

CAPITOL
BUILDING

GLENWOOD
SOUTH

OAKWOOD

CAPITOL
BUILDING

DOWNTOWN RALEIGH

220

FAYETTEVILLE

TRANSEVER CO.
FOOD HALL

BOYLAN
HEIGHTS

PERFORMING ARTS
CENTER

CHAVIS PARK

DOROTHEA DIX
PARK

INTERSTATE 40

220 FAYETTEVILLE ST.

ELM
PARTNERS

HISTORY

"RALEIGH WAS FOUNDED IN 1792 AS N.C.'S CAPITAL CITY. IT WAS NAMED FOR SIR WALTER RALEIGH, WHO ATTEMPTED TO ESTABLISH THE FIRST ENGLISH COLONY ON THE SHORES OF THE NEW WORLD IN THE 1580'S. IT IS THE ONLY STATE CAPITAL TO HAVE BEEN PLANNED AND ESTABLISHED BY A STATE AS THE SEAT OF GOVERNMENT. THE CITY'S FOUNDING FATHERS CALLED RALEIGH THE "CITY OF OAKS" AND DEDICATED THEMSELVES TO MAINTAINING THE AREA'S WOODED TRACTS AND GRASSY PARKS.

NICK WILSON
MANAGING PARTNER
919-210-9130
NICK@ELM.PARTNERS

RALEIGH RECOGNIZED

/ 2023

#3 BEST BUSINESS CLIMATES (LARGE) IN THE US
-BUSINESS FACILITIES

/ 2022

#2 THE SOUTH'S BEST CITIES ON THE RISE
-SOUTHERN LIVING

/ 2022

#2 SPOT IN THE US TO BE A REMOTE WORKER
-TRIANGLE BUSINESS JOURNAL

/ 2022

#3 AMERICA'S HAPPIEST CITIES
-MEN'S HEALTH

/ 2022

#3 STEM JOB GROWTH INDEX
-RCLCO

/ 2022

#4 50 BEST PLACES TO LIVE IN THE US
-MONEY

ELM
PARTNERS