

# ONE EIGHTY-FIVE STAGG ASSOCIATES

1799 POST ROAD EAST  
WESTPORT, CONNECTICUT

SITE PLANS, FLOOR PLANS,  
& SQUARE FOOTAGES

ONE EIGHTY-FIVE  
STAGG ASSOCIATES  
929 Kings Highway East  
Fairfield, Connecticut

**I** N F O Q U E S T  
T E C H N O L O G I E S  
1077 Silas Deane Highway, Suite 321  
Westport, Connecticut 06109  
Telephone: 860-563-2600 Telefax: 860-563-2605  
Internet: <http://www.iqr.com>

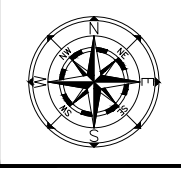
DRAWING TITLE:  
1799 POST ROAD EAST  
Site Plans, Floor Plans,  
& Square Footages

DATE: 04.27.09  
SCALE: NTS  
DRAWING NUMBER

**A-0**



○ PHOTOGRAPH  
1799 POST ROAD EAST



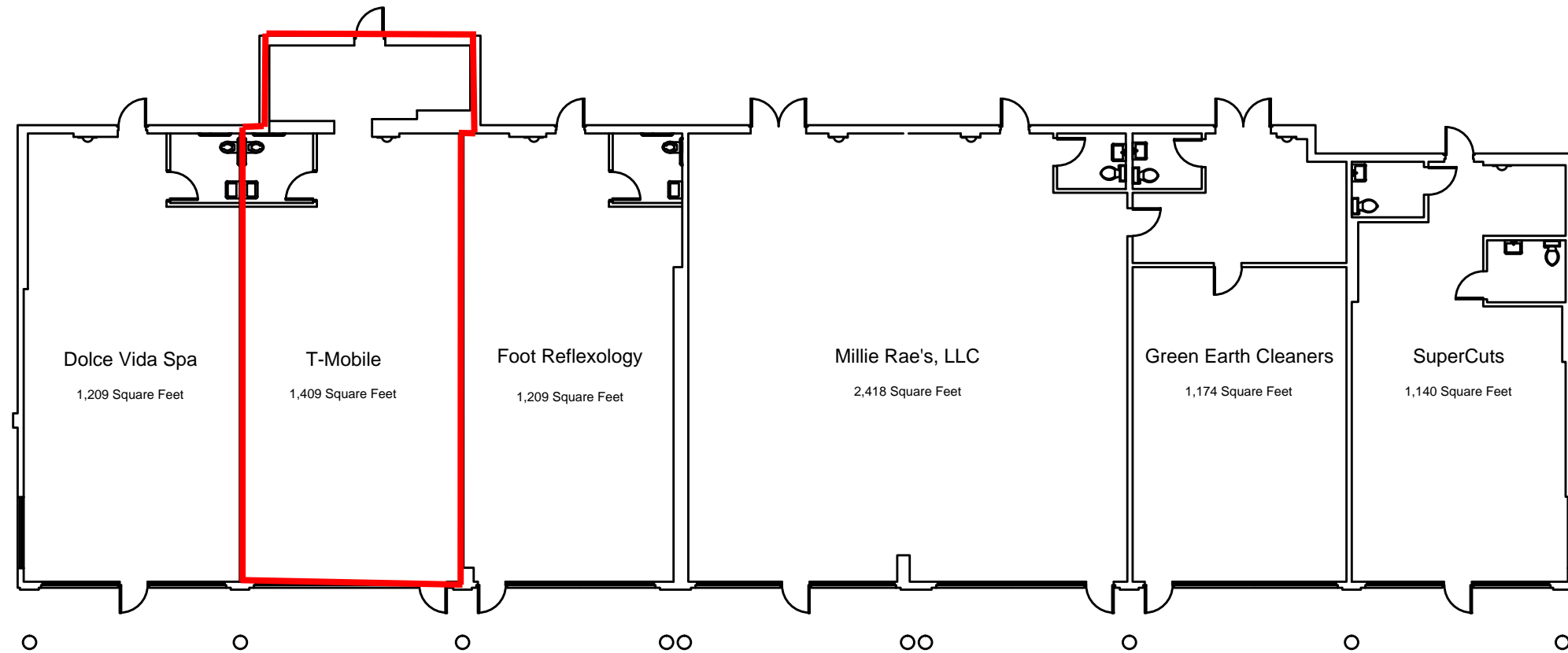
ONE EIGHTY-FIVE  
STAGG ASSOCIATES  
929 Kings Highway East  
Fairfield, Connecticut



**I** N F O Q U E S T  
T E C H N O L O G I E S  
1077 Silas Deane Highway, Suite 321  
Wethersfield, Connecticut 06109  
Telephone: 860-563-2600 Telefax: 860-563-2605  
Internet: <http://www.iqr.com>

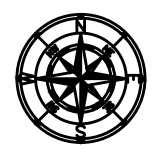
DRAWING TITLE:  
1799 POST ROAD EAST  
Photograph

DATE: 04.27.09  
SCALE: NTS  
DRAWING NUMBER

**A-1**



 **FIRST FLOOR PLAN**  
 1799 POST ROAD EAST  
 SCALE: 1/16" = 1'-0"  




ONE EIGHTY-FIVE  
 STAGG ASSOCIATES  
 929 Kings Highway East  
 Fairfield, Connecticut

**INFOQUEST**  
**TECHNOLOGIES**  
 1077 SilasDeane Highway, Suite 321  
 Wethersfield, Connecticut 06109  
 Telephone: 860-563-2600 Telefax: 860-563-2605  
 Internet: <http://www.iqt.com>

DRAWING TITLE:  
 1799 POST ROAD EAST  
 Floor Plans

DATE: 11.13.09  
 SCALE: 1/16" = 1'-0"  
 DRAWING NUMBER

**A-2**

**CODES TO WHICH THIS SPACE WAS DESIGNED**

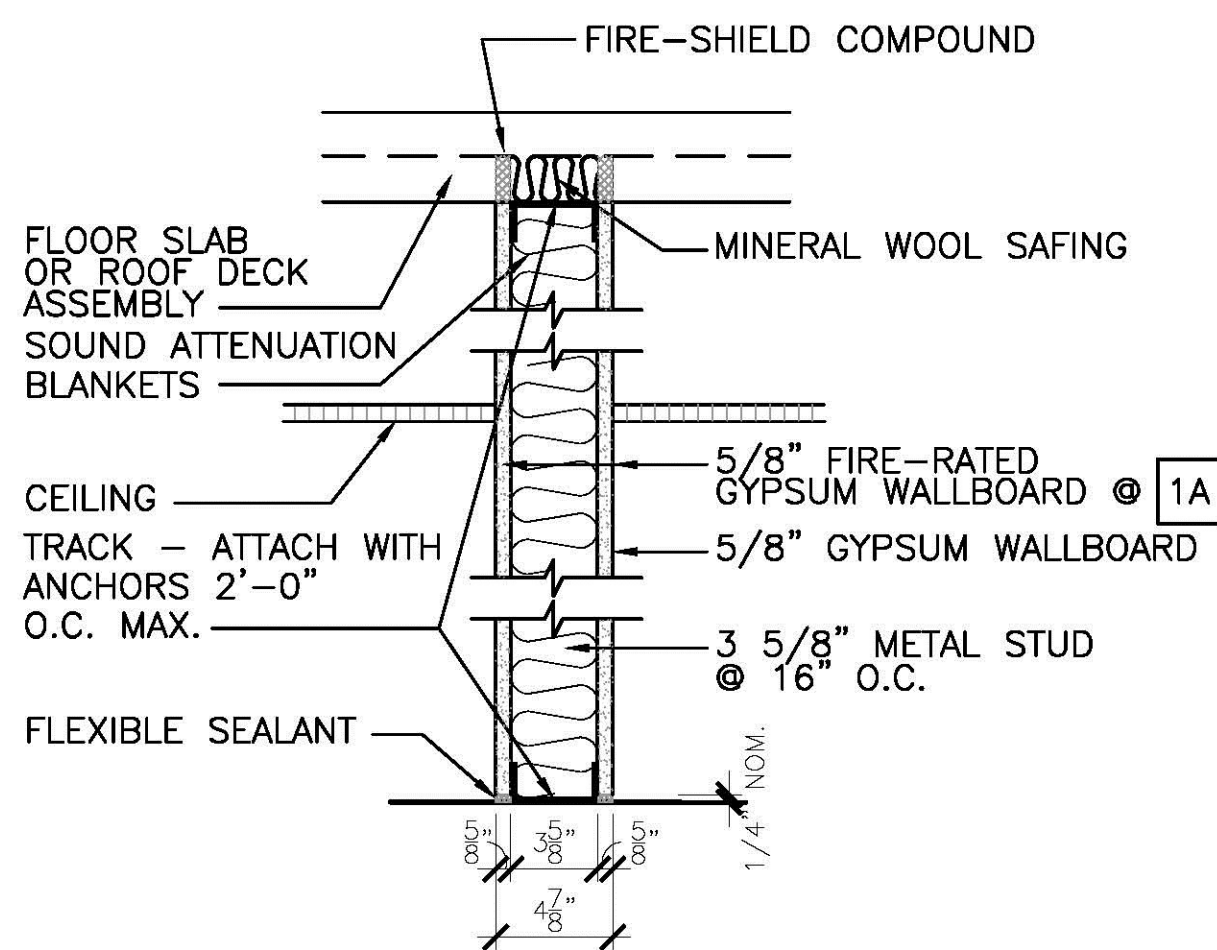
- 2016 CONNECTICUT STATE BUILDING CODE (CSBC)
- INTERNATIONAL BUILDING CODE / 2012 (IBC)
  - INTERNATIONAL MECHANICAL CODE / 2012 (IMC)
  - INTERNATIONAL PLUMBING CODE / 2012 (IPC)
  - NATIONAL ELECTRIC CODE, NFPA 70 / 2014 (NEC)
  - INTERNATIONAL ENERGY CONSERVATION CODE / 2012 (IECC)
  - ICC / ANSI A117.1 ACCESSIBLE AND USABLE BUILDINGS AND FACILITIES / 2009
  - CONNECTICUT AMENDMENT TO THE 2012 INTERNATIONAL BUILDING CODE

- 2016 CONNECTICUT STATE FIRE CODE (CSFSC)
- INTERNATIONAL FIRE CODE / 2012 (IFC)
  - NATIONAL FIRE PROTECTION ASSOCIATION 101 LIFE SAFETY CODE / 2012 (NFPA 101)
  - 2016 CONNECTICUT AMENDMENT TO THE 2012 INTERNATIONAL FIRE CODE

USE GROUP: "M" MERCANTILE  
TYPE OF CONSTRUCTION = IIB

**FLOOR PLAN LEGEND:**

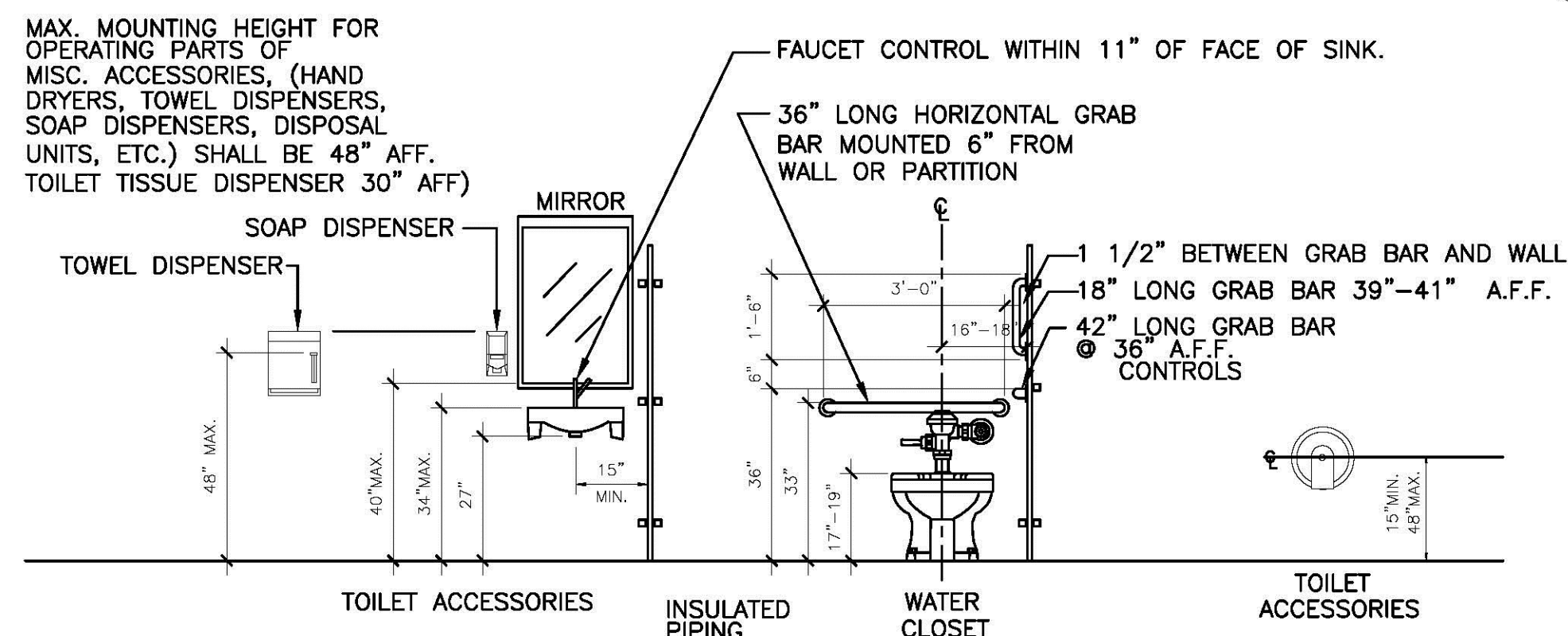
- EXISTING DOOR TO BE REMOVED
- EXISTING DOOR TO REMAIN
- NEW 3'-0"x7'-0" H.M. DOOR AND FRAME WITH CLOSER
- EXISTING WALL TO BE REMOVED
- EXISTING WALL TO REMAIN
- NEW FULL WALL
- CALL FOR AID PULL CHAIN
- CALL FOR AID LIGHT AND AUDIBLE SOUND
- EXHAUST FAN, CEILING MOUNTED



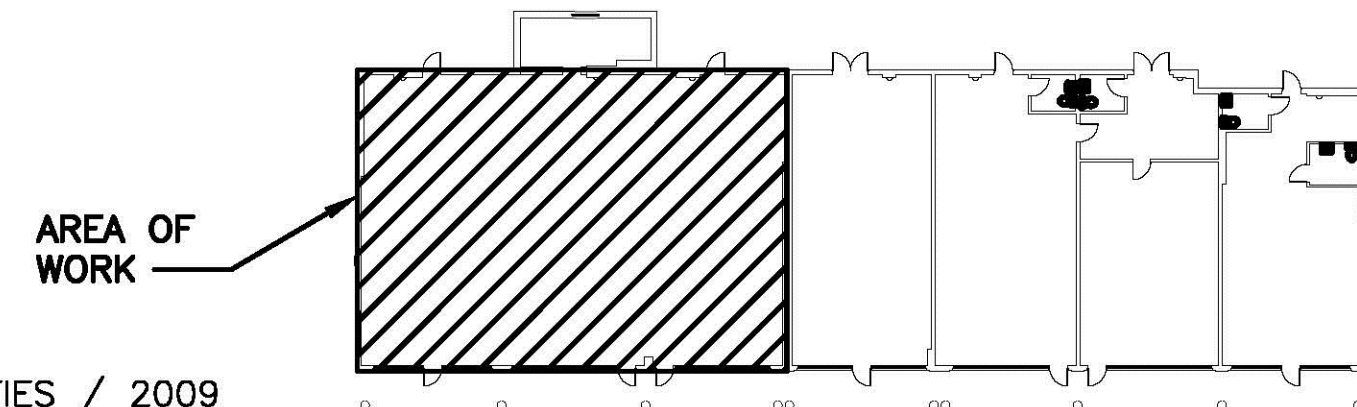
**1 HOUR RATED WALL TYPE**  
SCALE: 1 1/2" = 1'-0" **1A**

NOTE: PROVIDE M.R. GYPSUM BOARD  
⊙ ALL TOILETS WET WALLS

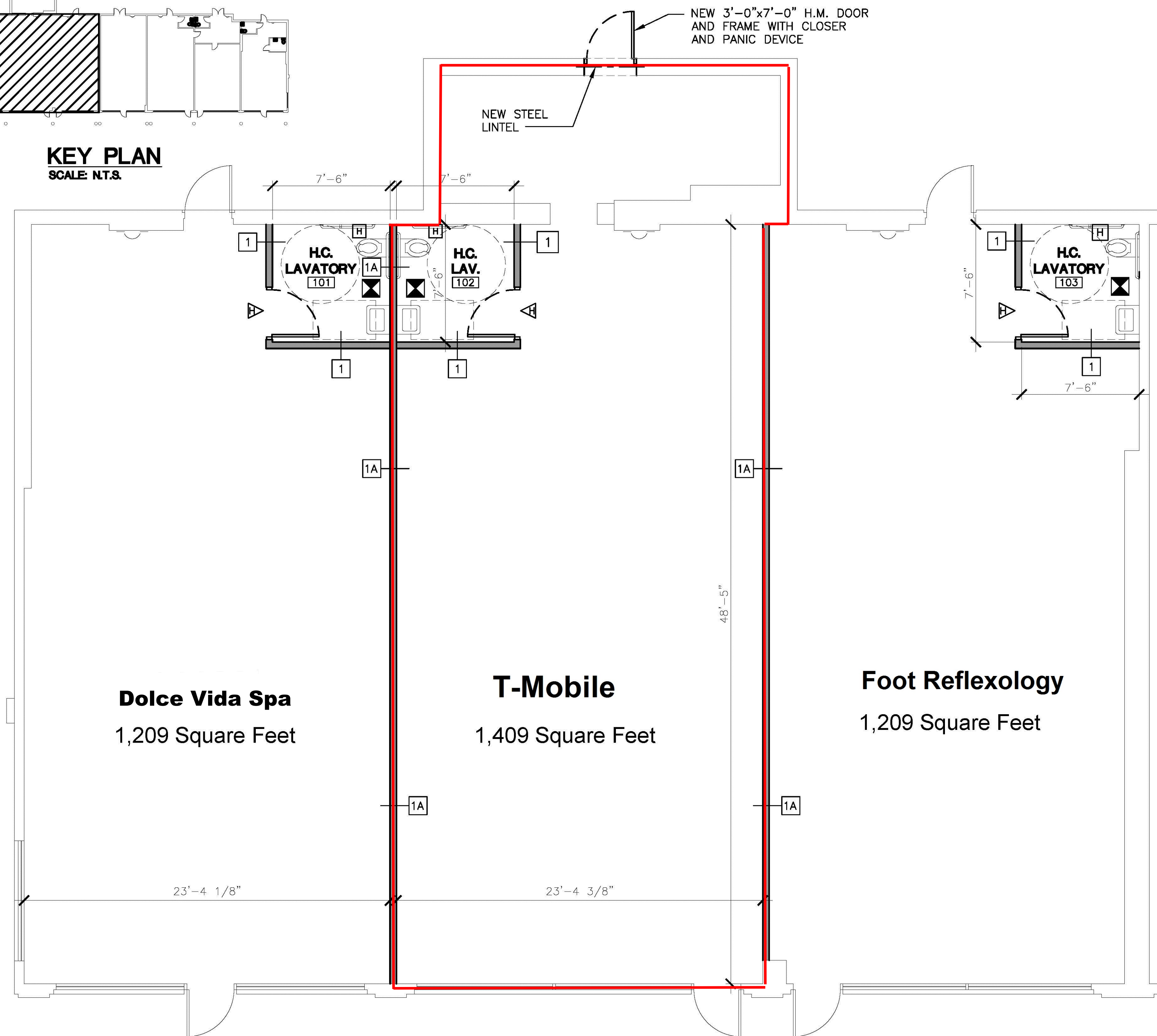
UL DES# U465 AT **1A**



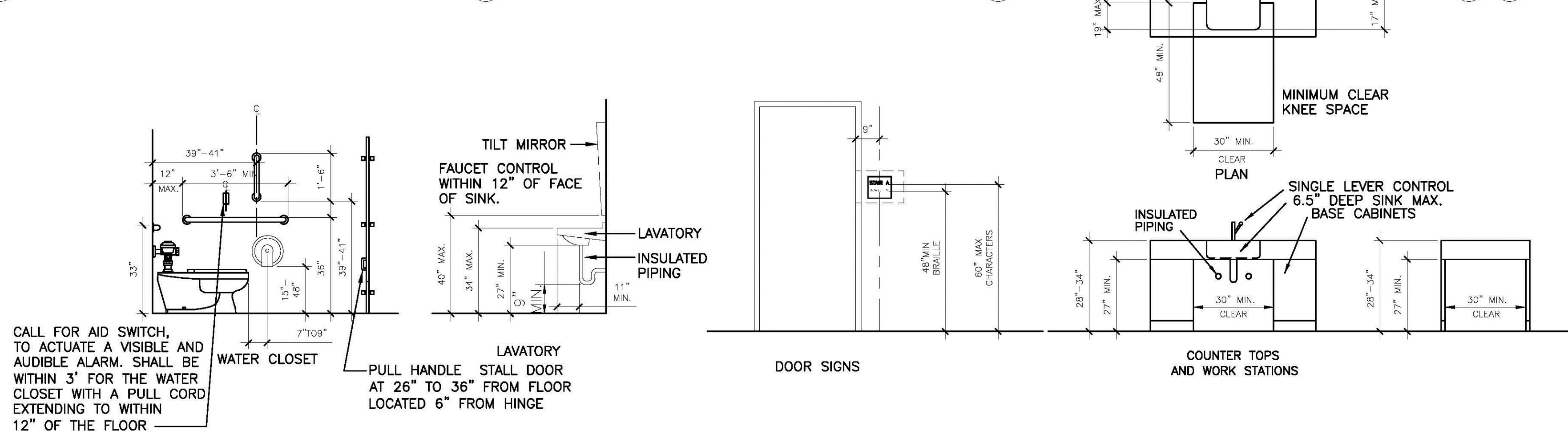
**TYPICAL ADA MOUNTING HEIGHTS**  
SCALE: 3/8" = 1'-0"



**KEY PLAN**  
SCALE: N.T.S.



**PROPOSED FLOOR PLAN**  
SCALE: 1/4" = 1'-0"



REVISIONS			
NO.	BY	DATE	DESCRIPTION

PROJECT TITLE

**TENANT SEPERATION**

1799 POST ROAD  
WESTPORT, CT

Prepared For:  
UNITED PROPERTIES

SHEET TITLE

**FLOOR PLANS, AND DETAILS**

DESIGNED BY: PMR	SCALE: AS NOTED
DRAWN BY: MS	DATE: 12-19-16
CHECKED BY: PMR	PROJECT NUMBER: 2166
CAD FILE: R:/2166/ARCH	

SEAL SHEET NUMBER

**A-1**

