



±6,630 SF CONTRACTOR'S YARD  
**FOR SALE** 10662 CHESTNUT AVE.  
 STANTON | CA



±6,630 SF  
 AVAILABLE



±720 SF  
 OFFICE SPACE



±0.15 ACRES  
 LOT SIZE



FENCED YARD  
 CONCRETE PADDED

CONTACT EXCLUSIVE LISTING AGENTS:



**DEVIN RAY**  
 VICE PRESIDENT  
 M: 714.322.1252  
 dray@daumcre.com  
 CA DRE License #02018130



**MIKE BARREIRO** S I O R  
 E.V.P. | PRINCIPAL  
 P: 949.242.1706  
 mbarreiro@daumcre.com  
 CA DRE License #01712620



**ZACH HOMSY**  
 ASSOCIATE  
 M: 949.242.1705  
 zhomsy@daumcre.com  
 CA DRE License #02239258



**DAUM**  
 COMMERCIAL REAL ESTATE SERVICES

±6,630 SF CONTRACTOR'S YARD

±6,630 SF  
CONTRACTOR'S  
YARD

**FOR SALE** 10662 CHESTNUT AVE.  
STANTON | CA

## PROPERTY HIGHLIGHTS

- Fully Fenced ±6,630 SF (±0.15 AC) Parcel
- Two Bed, One Bath Home/Office (±720 SF)
- Concrete Padded Yard
- Dual Points of Entry (Front & Rear)
- Rear Access to Alley Way
- 200 Amps Power (Buyer to Verify)
- Ideal Contractor's Yard
- ±\$65K in Recent Renovations to the Home/Office



### CONTACT EXCLUSIVE LISTING AGENTS:



**MIKE BARREIRO**  S10R  
E.V.P. | PRINCIPAL  
P: 949.242.1706  
mbarreiro@daumcre.com  
CA DRE License #01712620



**DEVIN RAY**  
VICE PRESIDENT  
M: 714.322.1252  
dray@daumcre.com  
CA DRE License #02018130



**ZACH HOMSEY**  
ASSOCIATE  
M: 949.242.1705  
zhomsey@daumcre.com  
CA DRE License #02239258



### PROPERTY HIGHLIGHTS

  
**DAUM**  
COMMERCIAL REAL ESTATE SERVICES

±6,630 SF  
CONTRACTOR'S  
YARD

**FOR SALE** 10662 CHESTNUT AVE.  
STANTON | CA



CONTACT EXCLUSIVE LISTING AGENTS:



**DEVIN RAY**  
VICE PRESIDENT  
M: 714.322.1252  
dray@daumcre.com  
CA DRE License #02018130



**MIKE BARREIRO** S I O R  
E.V.P. | PRINCIPAL  
P: 949.242.1706  
mbarreiro@daumcre.com  
CA DRE License #01712620



**ZACH HOMSY**  
ASSOCIATE  
M: 949.242.1705  
zhomsy@daumcre.com  
CA DRE License #02239258

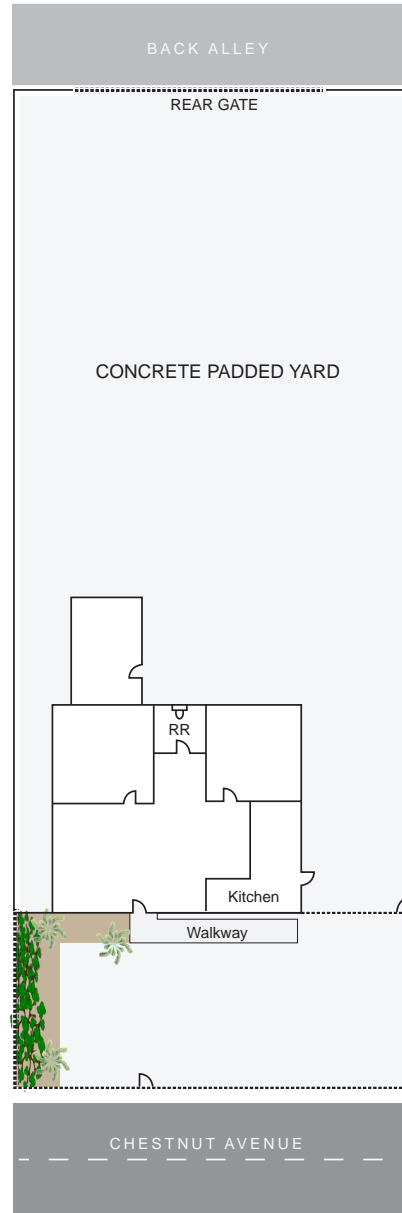


PHOTOS

**DAUM**  
COMMERCIAL REAL ESTATE SERVICES

±6,630 SF  
CONTRACTOR'S  
YARD

**FOR SALE** 10662 CHESTNUT AVE.  
STANTON | CA



\*NOT TO SCALE

CONTACT EXCLUSIVE LISTING AGENTS:



**DEVIN RAY**  
VICE PRESIDENT  
M: 714.322.1252  
dray@daumcre.com  
CA DRE License #02018130



**MIKE BARREIRO** **SIR**  
E.V.P. | PRINCIPAL  
P: 949.242.1706  
mbarreiro@daumcre.com  
CA DRE License #01712620



**ZACH HOMSEY**  
ASSOCIATE  
M: 949.242.1705  
zhomsey@daumcre.com  
CA DRE License #02239258

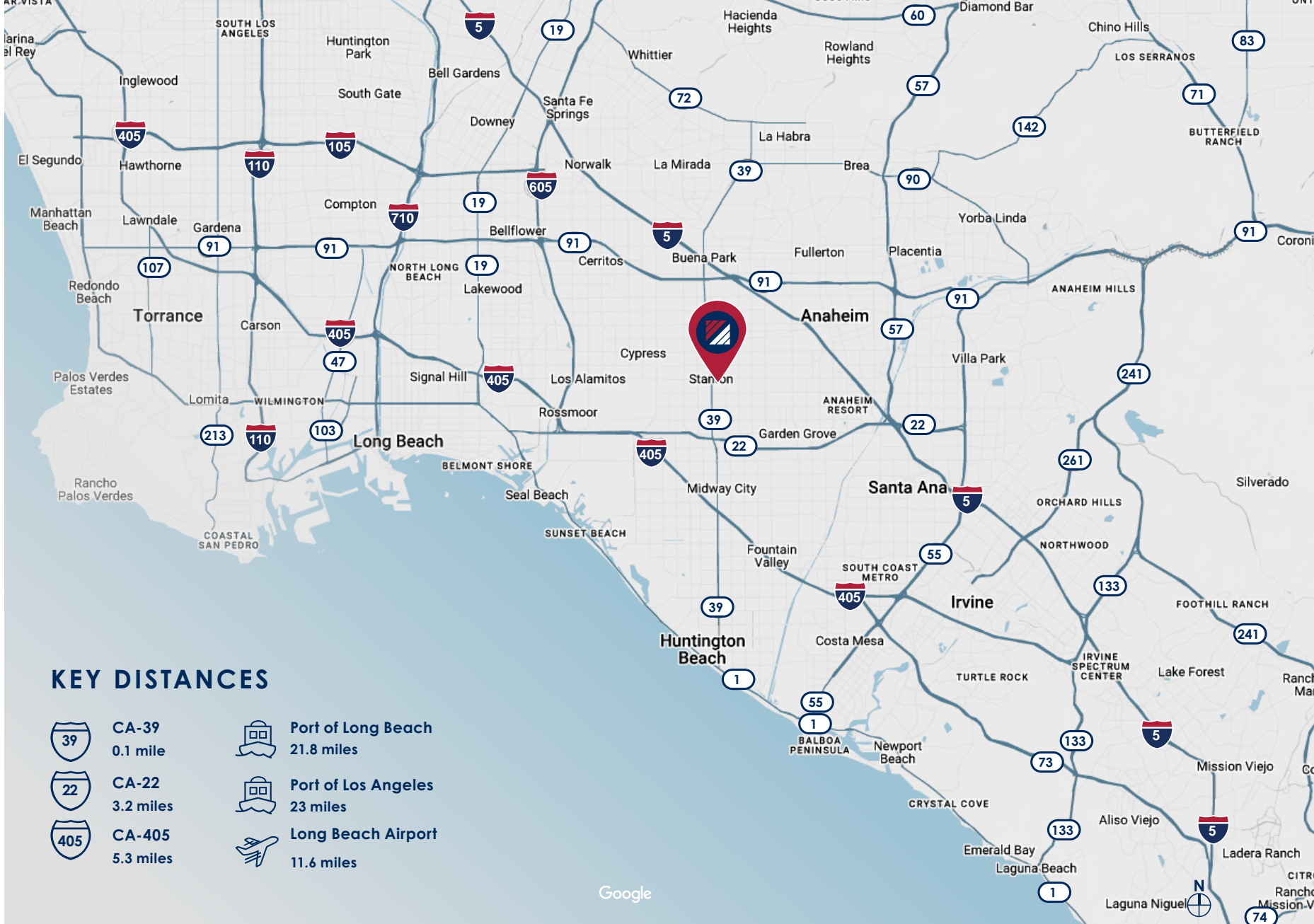


SITE PLAN









±6,630 SF  
CONTRACTOR'S  
YARD

FOR SALE 10662 CHESTNUT AVE.  
STANTON IGA



KEY DISTANCES

-  CA-39 0.1 mile
-  Port of Long Beach 21.8 miles
-  CA-22 3.2 miles
-  Port of Los Angeles 23 miles
-  CA-405 5.3 miles
-  Long Beach Airport 11.6 miles

Google

CONTACT EXCLUSIVE LISTING AGENTS:



**DEVIN RAY**  
VICE PRESIDENT  
M: 714.322.1252  
dray@daumcre.com  
CA DRE License #02018130



**MIKE BARREIRO**   
E.V.P. | PRINCIPAL  
P: 949.242.1706  
mbarreiro@daumcre.com  
CA DRE License #01712620



**ZACH HOMSEY**  
ASSOCIATE  
M: 949.242.1705  
zhomsey@daumcre.com  
CA DRE License #02239258



LOCATION MAP



±6,630 SF  
CONTRACTOR'S  
YARD

**FOR SALE** 10662 CHESTNUT AVE.  
STANTON IGA



CONTACT EXCLUSIVE LISTING AGENTS:



**DEVIN RAY**  
VICE PRESIDENT  
M: 714.322.1252  
dray@daumcre.com  
CA DRE License #02018130



**MIKE BARREIRO** SIO R  
E.V.P. | PRINCIPAL  
P: 949.242.1706  
mbarreiro@daumcre.com  
CA DRE License #01712620



**ZACH HOMYS**  
ASSOCIATE  
M: 949.242.1705  
zhomys@daumcre.com  
CA DRE License #02239258



AMENITIES MAP

**DAUM**  
COMMERCIAL REAL ESTATE SERVICES